

New Location...    
 Drill Deeper...    
 Abandonment...

Company ANBURN OIL & GAS, INC.   
 Address OLEAN, NEW YORK   
 Farm W. G. & NETTIE ARNOLD   
 Tract 1, 2, 3 & 4 Acres 181.5 Lease No. \_\_\_\_\_   
 Well (Farm) No. 1 Serial No. \_\_\_\_\_   
 Elevation (Spirit Level) 1277.5 *August 27 75' ground*   
 Quadrangle HANGING ROCK - 52   
 County HAMPSHIRE District GORE   
 Engineer James J. Morris   
 Engineer's Registration No. 1739   
 File No. \_\_\_\_\_ Drawing No. \_\_\_\_\_   
 Date OCT. 7, 1957 Scale 1 IN. = 900 FT.

STATE OF WEST VIRGINIA   
 DEPARTMENT OF MINES   
 OIL AND GAS DIVISION   
 CHARLESTON

WELL LOCATION MAP   
 FILE NO. HAMP-8

*(converted to storage well)*   
 + Denotes location of well on United States Topographic Maps, scale 1 to 62,500, latitude and longitude lines being represented by border lines as shown.   
 - Denotes one inch spaces on border line of original tracing.

TD 5586

~~Orisk 5280 - 5410~~  
5470 - 5532

Chart  
GAD 5412 50M

200 M

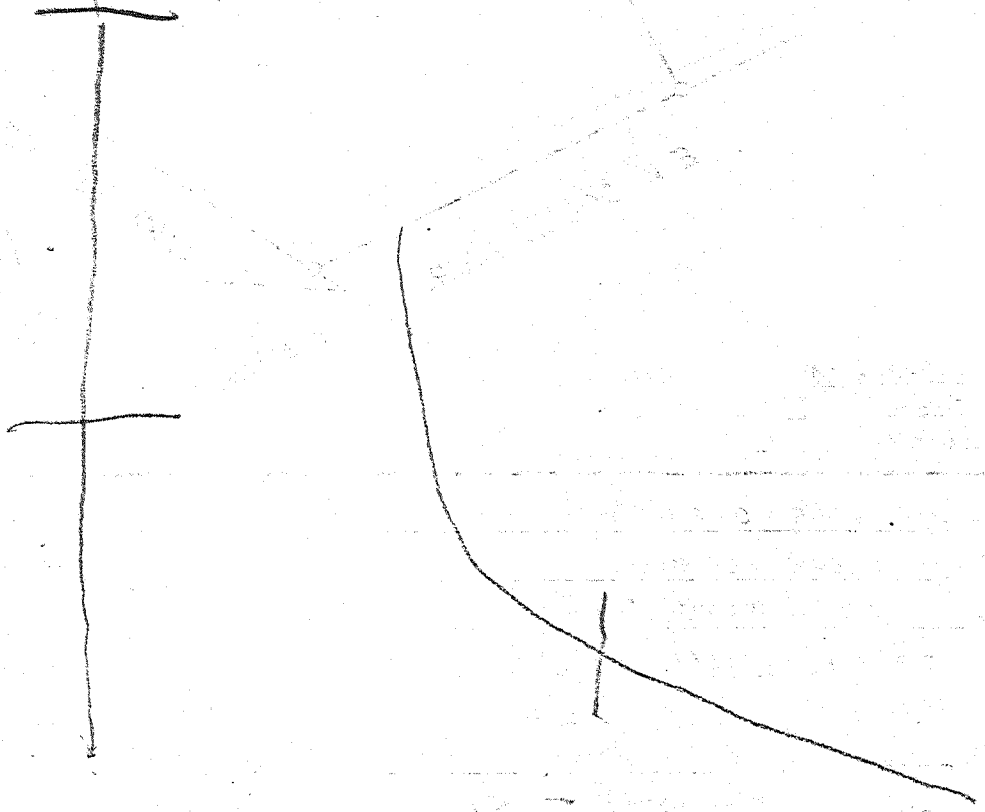
A F

Oriskany

GAD 5472 - 78 - 5540

S.D.

Ping Back 5475





STATE OF WEST VIRGINIA  
DEPARTMENT OF MINES  
OIL AND GAS DIVISION //

Quadrangle Hanging Rock H- NS500' W. 6000'

Permit No. HMP-3

WELL RECORD

Oil or Gas Well Gas  
(KIND)

Company Amburn Oil and Gas Inc.  
Address Room 502 Exchange Bank Bldg. Clean  
Farm W.G. Arnold Acres 125

Location (waters) Little Cacapon  
Well No. One (1) Elev. ~~1277.5~~ 1277.5  
District Gore County Hampshire

The surface of tract is owned in fee by Nettie Arnold  
By Will Of W.G. Arnold Address Romney, W. Va.

Mineral rights are owned by Nettie Arnold Romney, W. Va.  
& Milburn Anderson Address Warren, Pa.

Drilling commenced October 15, 1957  
Drilling completed June 23, 1958

Date Shot Not Shot From \_\_\_\_\_ To \_\_\_\_\_

With \_\_\_\_\_

Open Flow 50 /10ths Water in 1-1/2\* Inch

\_\_\_\_\_ /10ths Merc. in \_\_\_\_\_ Inch

Volume 124,717 Cu. Ft.

Rock Pressure 1980# lbs. 72 hrs.

Oil \_\_\_\_\_ bbls., 1st 24 hrs.

WELL ACIDIZED Used 1300 Gallons Acid

WELL FRACTURED Used 300 Gallons of oil immediately following the using of the acid in Fracturing the well.

RESULT AFTER TREATMENT The volume of gas just prior to Fracturing was 56,000 after fracturing it showed an increase to 200,000 in volume.  
ROCK PRESSURE AFTER TREATMENT Rock pressure went back to 1980 lbs.

Fresh Water None in Pay Formation Feet \_\_\_\_\_ Salt Water None Feet \_\_\_\_\_

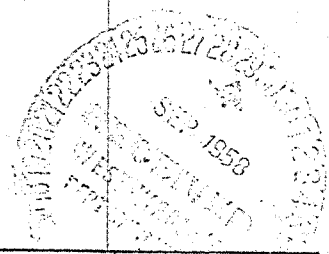
Casing and Tubing	Used in Drilling	Left in Well	Packers
Size 16			Kind of Packer _____
13			
10 1/2"	42"-6" Conductor		Size of Shoe _____
8 5/8"	1129'	1129'	Depth set _____
8 3/8"	5280'	5280'	
5 3/16"			
3"			Perf. top _____
2 1/2"	Used to Frac. Well then Pulled		Perf. bottom _____
			Perf. top _____
			Perf. bottom _____

CASING CEMENTED \_\_\_\_\_ SIZE 7 No. Ft. 75' Date \_\_\_\_\_

COAL WAS ENCOUNTERED AT None FEET \_\_\_\_\_ INCHES \_\_\_\_\_  
FEET \_\_\_\_\_ INCHES \_\_\_\_\_ FEET \_\_\_\_\_ INCHES \_\_\_\_\_  
FEET \_\_\_\_\_ INCHES \_\_\_\_\_ FEET \_\_\_\_\_ INCHES \_\_\_\_\_

Formation	Color	Hard or Soft	Top	Bottom	Oil, Gas or Water	Depth	Remarks
Clay	L. Brown	Soft	0'	42'			
Lime	Gray	Hard	42'	60'			
Lime	Purple	Hard	60'	128'	1st Water 80-Gals per Minute at 128'		
Lime	Gray	Hard	128'	190'			
Lime & Sh.	Pink	Med.	190'	233'	2nd Water	197'	
Lime	Gray	Hard	233'	317'	More Water	284'	
Lime & Sh.	Gray & Brn	Med.	317'	378'	More water	398'	
Lime	Brown	Hard	378'	415'			
Lime & Sh.	Gray	Med.	415'	444'			
Shale	Purple	Med.	444'	450'			
Lime	Brown	Hard	450'	482'			
Lime	Gray	Vy. Hard	482'	570'			
Lime	Brown	Hard	570'	600'			
Lime	Gray	Hard	600'	652'			
Lime	Pink	Hard	652'	675'			
Lime Gray	Gray	Hard	675'	720'			
Sand	Gray	Med.	720'	730'			
Lime	Gray	Hard	730'	805'			
Sandy Lime	Gray	Hard	805'	894'	Suit Gas Sand at 894'		
Lime	Gray	V. Hard	894'	955'			
Lime	Pink	Hard	955'	941'			
Lime & Sand	Gray	Hard	941'	958'			
Lime	Gray	Hard	958'	1000'			
SL & Shells	Gray	Hard	1000'	1013'			
Sandy Lim	Gray	Hard	1013'	1034'			
Sandy Lim	Brown	Hard	1034'	1060'			
Lime	Gray	Hard	1060'	1120'			
S. & Shells	Gray	Med.	1120'	1156'			
Lime	Gray	Hard	1156'	1259'			
Lime	Brown	Hard	1259'	1290'			

160 BLS/Hr



Formation	Color	Hard or Soft	Top //	Bottom	Oil, Gas or Water	Depth Found	Remarks
S. & Shells	Gray	Hard	1270'	1505'			
S. & Shells		Med.	1505'	1442'			
Lime	Gray	Hard	1442'	1528'			
S. & Shells	Gray	Med.	1528'	2532'			
Lime & Shls	Gray	Hard	2532'	2660'			
Sandy Lim.	Gray	Hard	2660'	2681'			
Slate & Shl.	Gray	Med.	2681'	2715'			
Lime	Gray	Hard	2715'	3011'			
Shale	Lt. Brn.	Med.	3011'	3067'			
Lime	Brown	Hard	3067'	3200'			
Slate & Shls.	Brown	Med	3200'	3435'			
Lime	Dk. Gray	Hard	3435'	3505'			
Shale	Brown	Med.	3505'	3542'			
Lime	Gray	Hard	3542'	3700'			
Lime	Dk. Gray	Hard	3700'	3783'			
Silty Lime	Gray	Hard	3783'	3991'			
Slate & Shls	Gray	Med.	3991'	4062'			
Shale	Gray	Soft	4062'	4075'			
Lime & Slate	Gray	Med.	4075'	4105'			
Lt. Brn. Shale		Med.	4105'	4185'			
Lime	Gray	Hard	4185'	4221'			
Shale	Brown	Soft	4221'	4315'			
Lime	Gray	Hard	4315'	4374'			
Shale & Shls	Lt. Brn.	Med.	4374'	4492'			
Lime	Lt. Brn.	Hard	4492'	4518'			
Shle & Shls.	Lt. Brn.	Med.	4518'	4790'			
Lime	Gray	Hard	4790'	4895'			
Shale	Dk. Brn.	Med.	4895'	4927'			
Lime	Gray	Hard	4927'	4998'			
Shal & Shls.	Lt. Brn.	Med	4998'	5036'			
Shale	Brown	Soft	5036'	5067'			
Shells	Brown	Hard	5067'	5070'			
Shale	Brown	Med.	5070'	5167'			
Lime	Gray	Hard	5167'	5255'			
Shale	Gray Brn.	Med	5255'	5280'			
Oriskany	Gray	Hard	5280'	5442'			Top of Oriskany Sand Show of Gas Lite Show of Gas at 5406' To 5413' 4.2 Thro. 1" Orifice 50,000 Cu. Ft. by Volume but exhausted itself.
Ellenboro							
Lime - Held	Gray	Vy. Hard	5442'	5585'			Gas at 5472' to 5478' 2" Thro. 5/8" Orf 13,693' by volume Gas at 5540' To 5542' 5" Thro. 1 1/2" Orf 124,717 Cu. Ft by volume. This blew down to 56,000 by July 20, when well was acidized and Fractured Gas Test after Fracture was 200,000 Cu. Ft. by volume. Well was filled back up 27' before Fracturing.
TOTAL DEPTH NOW			5558'	485'			

5442  
5280  
5167  
5070

5167  
1278  
-----  
3889

Date \_\_\_\_\_, 19\_\_

APPROVED \_\_\_\_\_, Owner

By \_\_\_\_\_ (Title)