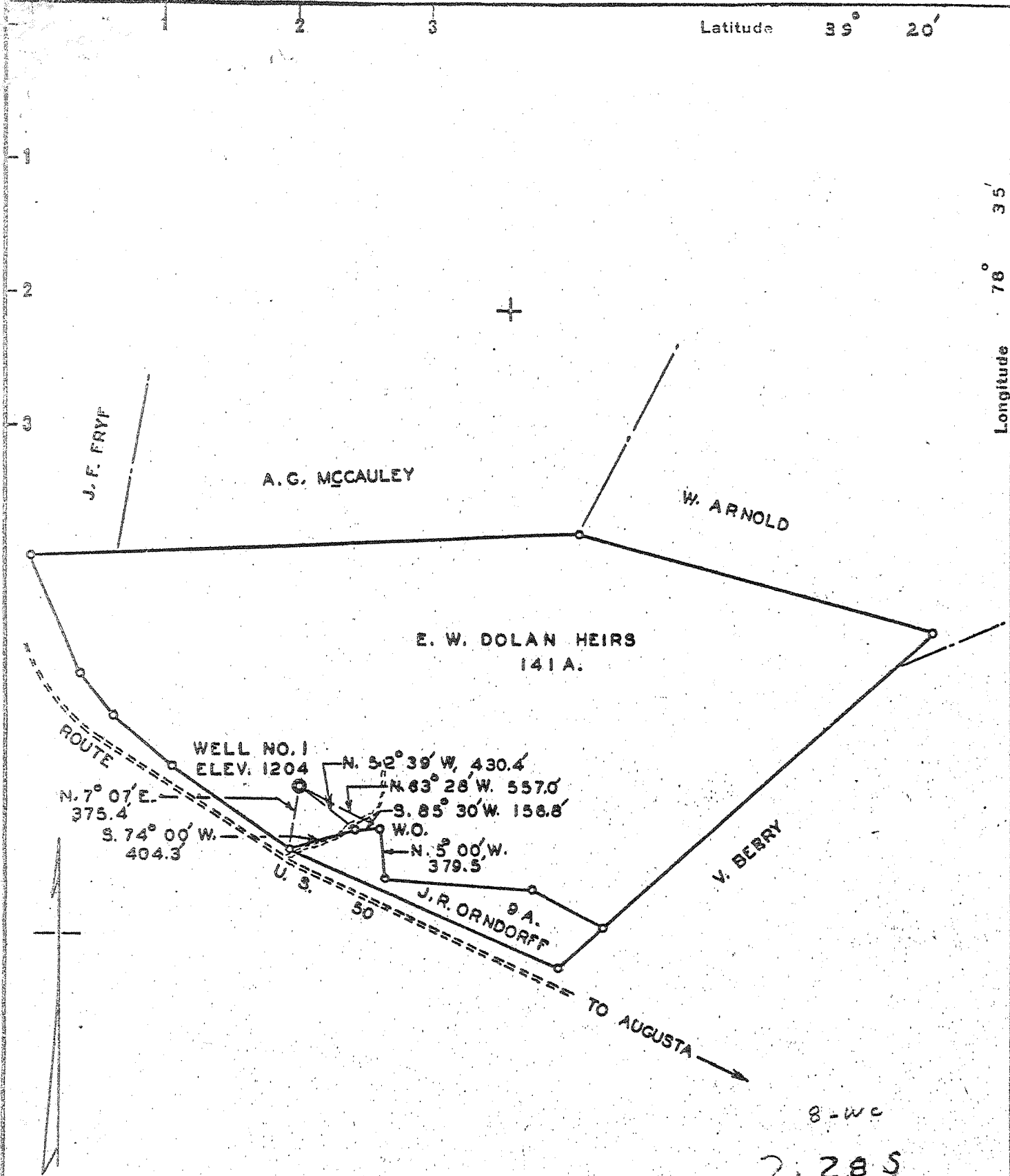


Latitude 39° 20'

Longitude 78° 35'



8-wc

2,285

3,71W

7.5' loc. via 2/12/2010 calc 15' loc.
 2,275 39' 20" 2,275
 144W 78° 37' 30" 3,670

New Location...
 Drill Deeper.....
 Abandonment.....

Company M. E. ANDERSON
 Address 311 MARKET ST. WARREN, PA.
 Farm E. W. DOLAN HEIRS
 Tract 2 Acres 151 Lease No. 2
 Well (Farm) No. 1 Serial No. _____
 Elevation (Spirit Level) 1204.0 *Auguste 2500 ft*
 Quadrangle HANGING ROCK - SC
 County HAMPSHIRE District GORE
 Engineer James J. Morris
 Engineer's Registration No. 1739
 File No. _____ Drawing No. _____
 Date MARCH 16, 1954 Scale 1" = 800'

STATE OF WEST VIRGINIA
 DEPARTMENT OF MINES
 OIL AND GAS DIVISION
 CHARLESTON

WELL LOCATION MAP

FILE NO. HAMP-4

(converted to storage well)
 + Denotes location of well on United States Topographic Maps, scale 1 to 62,500, latitude and longitude lines being represented by border lines as shown.

- Denotes one inch spaces on border line of original tracing.

5-5
 288

Deep Well



STATE OF WEST VIRGINIA
DEPARTMENT OF MINES
OIL AND GAS DIVISION 3

Quadrangle Hanging Rock
Perm-4 Doland Heirs

WELL RECORD

Oil or Gas Well GAS
(KIND)

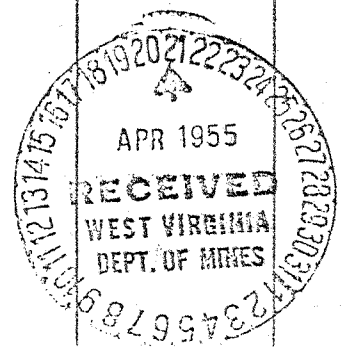
Company M.E. Anderson Oil Co
Address WARREN, PA.
Farm Doland Heirs Acres 151
Location (waters) _____
Well No. 1 Elev. 1204
District Gore County Hampshire
The surface of tract is owned in fee by Doland Heirs
Heirs Address AGUSTA, W.Va.
Mineral rights are owned by Doland Heirs Agusta
M.E. Anderson Address WARREN PA.
Drilling commenced March 29, 1954
Drilling completed Dec 17, 1954
Date Shot _____ From _____ To _____
With _____
Open Flow 145 /10ths Water in _____ Inch
145 /10ths Merc. in 2" Inch
Volume 1,873,000 Cu. Ft.
Rock Pressure 2050 lbs. _____ hrs.
Oil _____ bbls., 1st 24 hrs.
Fresh water 90-100 feet Hole Full feet
Salt water _____ feet _____ feet

Casing and Tubing	Used in Drilling	Left in Well	Packers
Size			
16			Kind of Packer
13			<u>BAKER</u>
10	<u>375</u>	<u>375</u>	Size of <u>6x2</u>
8 1/4	<u>1115</u>	<u>1115</u>	
6 1/2	<u>4890</u>	<u>4890</u>	Depth set <u>4821</u>
5 3/16			
3			Perf. top
2	<u>4821</u>	<u>4821</u>	Perf. bottom
Liners Used			Perf. top
			Perf. bottom

CASING CEMENTED 7" SIZE 600 No. Ft. 1115 Date 11/1/54

COAL WAS ENCOUNTERED AT _____ FEET _____ INCHES
_____ FEET _____ INCHES
_____ FEET _____ INCHES

Formation	Color	Hard or Soft	Top	Bottom	Oil, Gas or Water	Depth Found	Remarks
CLAY			1	30			
LIME			30	30 159			
SHALE			159	275			
LIME			275	346			
SLATE & Shells			346	461			
SAND			461	495			
LIME (Gritty)			495	745			
SAND			745	765			
SLATE			765	790			
LIME			790	900			
SLATE & Shells			900	960			
LIME			960	2640			
SLATE			2640	2708			
SAND			2708	2751			
LIME			2751	2850			
SLATE			2850	2884			
LIME			2884	2951			
SLATE & Shells			2951	4118			
LIME			4118	4147			
SLATE & Shells			4147	4442			
LIME			4442	4508			
SLATE & Shells			4508	4513			
LIME			4513	4548			
SLATE & Shells			4548	4704			



OPERATOR M. E. Anderson FARM NAME E. W. Dolan Hrs.
TOWNSHIP Gore COUNTY Hampshire STATE West Virginia
LOCATION Hanging Rock Quad. - Flat
1343 - McBride Elev.
ELEVATION 1204 - Whip Cove Elev.

DRILLERS LOG

960 - 2640 Lime
2640 - 2708 Black slate
2708 - 2751 Sand
2751 - 2850 Lime
2850 - 2884 Slate & shells
2884 - 2951 Lime
2951 - 4118 Slate & shells
4118 - 4147 Lime
4147 - 4442 Slate & shells
4442 - 4508 Lime
4508 - 4513 Slate & shells
4513 - 4548 Lime
4548 - 4704 Slate & shells
4704 - 4722 Brown shale
4722 - 4792 Lime
4792 - 4806 Slate
4806 Oriskany

Gas @ 4832
4838
4841
4845

R.P. 2050#

OPERATOR M. E. Anderson FARM NAME E. W. Doland Hrs.
 TOWNSHIP Cora COUNTY Hampshire STATE West Virginia
 LOCATION Hanging Rock Quadrangle - Flat.
 ELEVATION 1204' TOTAL DEPTH 5026' DRILLING COMPLETED 1-23-55
 RESULTS PTF 1661 MCF RP 2050 #

SAMPLE STUDY

- 100 - 164 Sandstone, very fine grain, red and medium gray, very slightly calcareous. Occasional quartz grains about .1 mm.
- 164 - 180 Shale, silty, medium gray-green.
- 180 - 189 Siltstone, medium gray-green and dull red.
- 189 - 308 Shale, silty, medium gray-green. Trace pyrite (Slickensides 303-08)
- 308 - 332 Siltstone, red and gray-green.
Bottom of red beds.
- 332 - 356 Siltstone, as above, but no red.
- 356 - 358 Shale, medium gray.
- 358 - 377 Siltstone, medium gray.
- 377 - 405 Missing
- 405 - 421 Siltstone, dark gray, some medium gray. Fossil fragments? Trace pyrite.
- 421 - 469 Siltstone, medium gray, some dark gray at top; trace pyrite.
- 469 - 479 Sandstone, very fine grain, medium gray.
- 479 - 535 Shale, medium gray, silty.
- 535 - 548 Sandstone, medium gray, very fine grain.
- 548 - 652 Siltstone, medium gray, with some shale.
- 652 - 661 Siltstone, dark gray.
- 661 - 672 Siltstone, medium gray.
- 672 - 695 Shale, dark gray.
- 695 - 703 Sandstone, very fine grain, dark gray, with some shale, medium-dark gray.
- 703 - 733 Shale, medium-dark gray, with some dark gray very fine sandstone.

copy made by H P Woodard 3/8/52

- 733 - 743 Siltstone, disaggregated, medium-gray.
- 743 - 768 Siltstone, medium gray.
- 768 - 778 Shale, medium gray, silty.
- 778 - 790 Siltstone, disaggregated, medium gray.
- 790 - 879 Siltstone, medium gray. Occasional shale streaks.
- 879 - 1084 Shale, medium gray, Occasional silty streaks.
- 1084 - 1152 Siltstone, medium gray, some shaly streaks.
- 1152 - 1347 Shale, medium gray, some silty streaks.
- 1347 - 1390 Siltstone, medium gray, some shale; trace pyrite.
- 1390 - 1402 Missing
- 1402 - 2624 Shale, medium gray; silty streaks; trace pyrite, slickensides with pyrite: 1606-16.
- 2624 - 2714 Shale, dark gray (gradational change); trace pyrite and quartz.
- 2714 - 2730 Siltstone, dark gray; trace calcite.
- 2730 - 2751 Siltstone, medium gray (gradational change).
- 2751 - 2606 Missing
- 2606 - 2751 Shale, medium gray.
- 2751 - 3043 Shale, silty, dark gray, trace pyrite. (Fossil fragments ? 3021-33).
- 3043 - 3056 Shale, medium gray, silty, with 20% pelitic limestone and one crinoid stem section, one brachiopod fragment.
- 3056 - 3824 Shale, medium-dark gray, slightly silty, with occasional fossil fragments (especially 3056-61); trace pyrite.
- 3824 - 3840 Shale, medium gray.
- Strung in -- gained 30'.
- 3874 - 3933 Shale, medium-dark gray; trace pyrite.
- 3933 - 3943 Shale, as above, with some medium gray.
- 3943 - 4131 Shale, dark gray; trace pyrite and calcite, (slickensides 3943-53).
- 4131 - 4396 Shale, silty, dark gray, occasional fossil fragments at top; trace vein quartz and calcite and pyrite (4373-81, amber-colored transparent mineral included in quartz) (More amber mineral 4386-90).
- 4396 - 4435 Shale, dark gray, looks sooty; trace pyrite and vein quartz and calcite.

- 4435 - 4450 Shale, as above, and very slightly calcareous.
- 4450 - 4487 Shale, medium-dark gray, slightly calcareous; trace pyrite and vein quartz and calcite.
- 4487 - 4503 Shale, as above, but calcareous (gradual increase in lime).
- 4503 - 4568 Shale, dark gray, calcareous; trace pyrite and vein quartz and calcite.
- 4568 - 4687 Shale, as above, but non-calcareous (gradual fade-out of lime).
- 4687 - 4696 Limestone, shaly; trace soft dark-brown shale or siltstone - bentonite, some bentonite has pink pearly flakes.
- 4696 - 4704 Limestone, dark gray, shaly; trace pyrite, calcite, and quartz.
- 4704 - 4720 Limestone, shaly, medium-gray, cryptocrystalline; trace pyrite, trace bentonite (cavings?).
- 4720 - 4794 Shale, calcareous, medium gray (gradational from above). At 4750 shale is only very slightly calcareous.
- 4794 - 4800 Shale, as above, but calcareous.
- 4800 - 4868 Missing
- 4868 - 4891 Sandstone, fine grain (.05 mm. approximately), light-medium gray, well sorted, angular-sub-angular, fairly pure, calcareous cement; trace shale, dark gray.
- 4891 - 4909 Sandstone, as above, but color slightly darker and with a blue cast.
- 4909 - 4913 Sandstone, as above, but with large angular transparent quartz fragments - up to .2 mm.
- 4913 - 4923 Sandstone, light gray, fine to medium, pure, with poorly sorted angular-sub-angular grains; calcareous cement.
- 4923 - 4986 Sandstone, as above, but with better sorting.
- 4986 - 5008 Sandstone, as above, but less pure, medium gray.
- 5008 - 5010 Sandstone, dark gray, fine grained, calcareous cement.
- 5010 - 5026 Sandstone, medium-dark gray, fine grained, calcareous cement.

T. D.