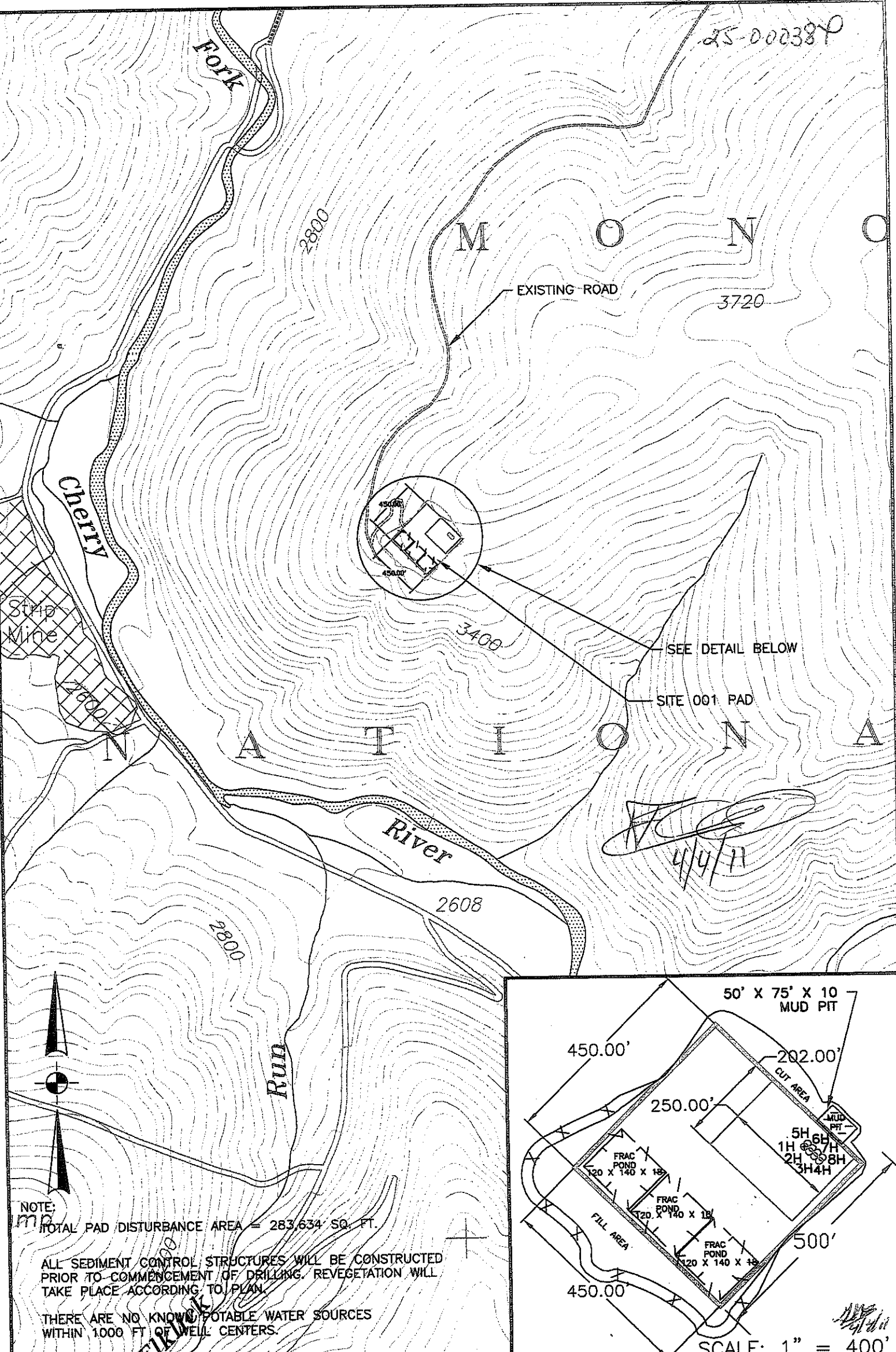


25-000387

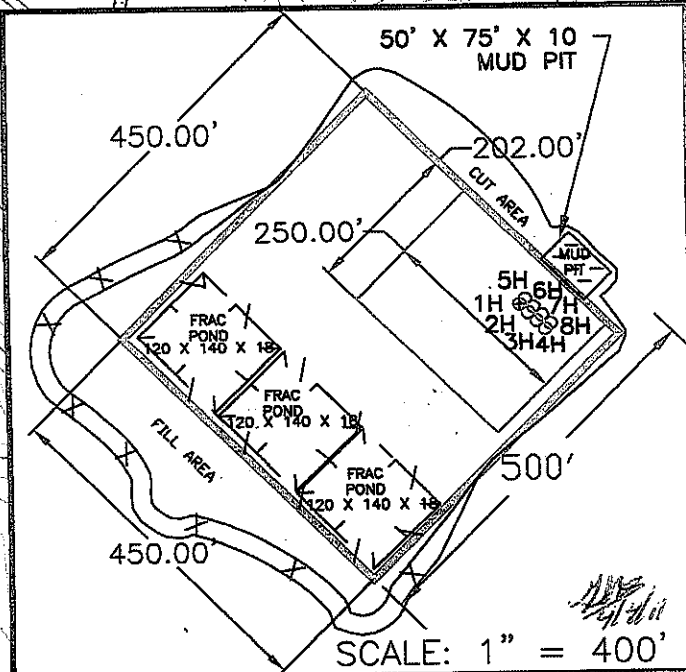


NOTE:
mp
TOTAL PAD DISTURBANCE AREA = 283,634 SQ. FT.

ALL SEDIMENT CONTROL STRUCTURES WILL BE CONSTRUCTED PRIOR TO COMMENCEMENT OF DRILLING. REVEGETATION WILL TAKE PLACE ACCORDING TO PLAN.

THERE ARE NO KNOWN POTABLE WATER SOURCES WITHIN 1000 FT OF WELL CENTERS.

FORM W9



SCALE: 1" = 400'

Alliance Consulting, Inc.
 Engineers
 Constructors
 Scientists
 BECKLEY, WV (304) 255-0491
 SUMMERSVILLE, WV (304) 883-2360
 cdunlap@aci-wv.com

SITE PLAN MAP
 PLUM CREEK SOUTH FORK SITE 001 WELLS
 1H, 2H, 3H, 4H, 5H, 6H, 7H AND 8H
 NEAR RICHWOOD, GREENBRIER COUNTY, WEST VIRGINIA

DRAWING NUMBER	SCALE: 1" = 1000'	DRAWN BY	RCD
W10-290-A42	FORK MOUNTAIN QUAD.	CHECKED BY	RCD
		APPROVED BY	RCD

PREPARED FOR
 BRC OPERATING CO. LLC.
 200 CRESCENT COURT
 SUITE 200
 DALLAS, TEXAS 75201

06/15/2012