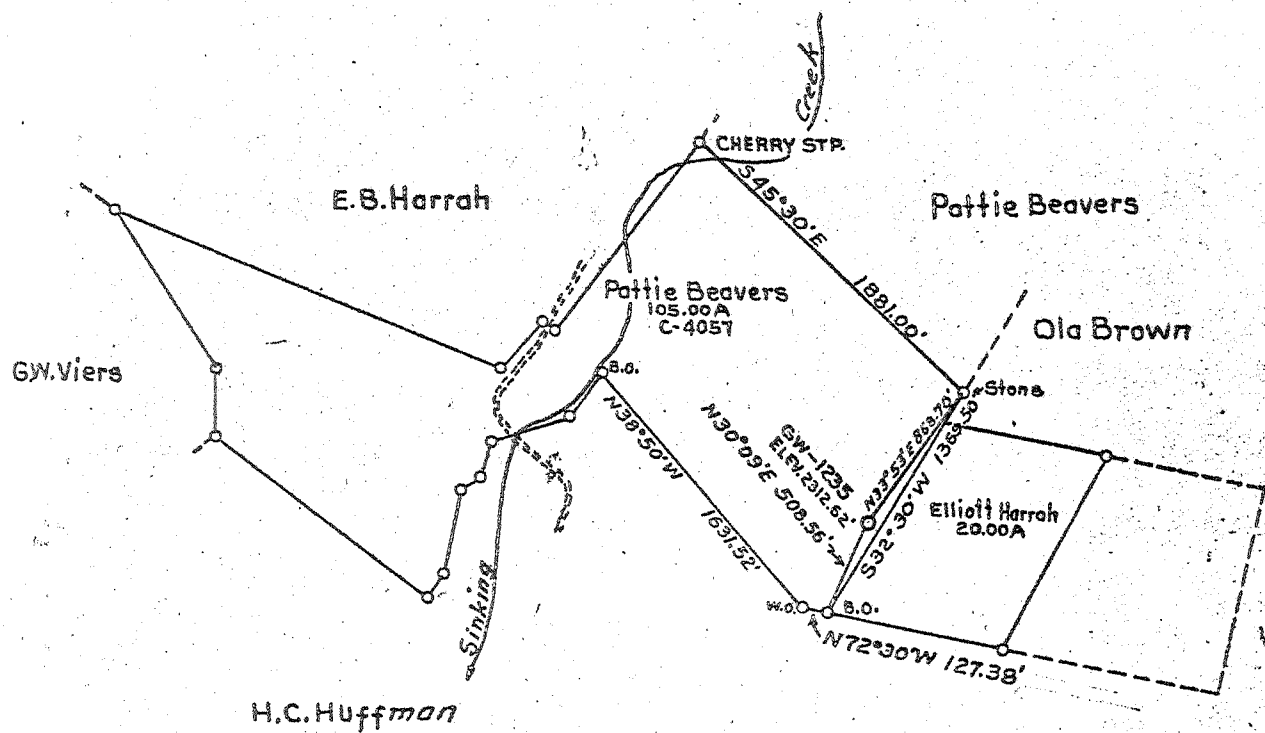


+

1.92W  
1.485

C-NE (2-9)



THE ABOVE IS PART OF A UNITIZATION MADE UP OF THE FOLLOWING LEASES:

Lease C-4057	Pattie Beavers	105 Acres
C-3962	Pattie Beavers	103 Acres
C-3827	D. R. Piercy	100 Acres
C-3993	Pritchard Collins	4 Acres
C-4037	Hubert C. Huffman	46 Acres
	Elliott B. Harrah	161 Acres
		519 Acres

7.516c  
1,395 37.55  
1,906 80° 30'

- New Location...
- Drill Deeper.....
- Abandonment.....

Company **COLUMBIAN CARBON COMPANY**

Address **BOX 873 CHARLESTON W.VA.**

Farm **PATTIE BEAVERS et al**

UNITIZATION OF 519.00Ac.

Tract \_\_\_\_\_ Acres **519.00** Lease No. **CT-204**

Well (Farm) No. **1** Serial No. **GW-1235**

Elevation (Spirit Level) **2312.62'** *Carroll 35 quad*

Quadrangle **CLINTONVILLE 6 S-147 W-193**

County **GREENBRIER** District **WILLIAMSBURG**

Engineer **R. B. Anderson**

Engineer's Registration No. **2074**

File No. \_\_\_\_\_ Drawing No. **W-8-56**

Date **APRIL 16 1956** Scale **1" = 1000'**

STATE OF WEST VIRGINIA  
DEPARTMENT OF MINES  
OIL AND GAS DIVISION  
CHARLESTON

**WELL LOCATION MAP**

FILE NO. **GREEN-9**

+ Denotes location of well on United States Topographic Maps, scale 1 to 62,500, latitude and longitude lines being represented by border lines as shown.

= Denotes one inch spaces on border line of original tracing.

*D. J. Wall 1-0*

*Samples 31-A 50*

*10-6744*

Old TD 5853 (lost tools)  
Plea back to 7780 + height

Old TD 5853 (lost the tools)  
Plug back to 3280 and brought in Rotam



STATE OF WEST VIRGINIA  
DEPARTMENT OF MINES  
OIL AND GAS DIVISION 4

Quadrangle Clintonville 6 SW

Permit No. Green-9

WELL RECORD

Oil or Gas Well dry  
(KIND)

*gas show  
Kent. +  
Orisk.*

Company Columbian Carbon Company  
Address Box 873, Charleston 23, W. Va.  
Farm Pattie Beavers, etal Acres 519  
Location (waters) Sinking Creek  
Well No. 1 - GW-1235 Elev. 2312.62  
District Williamsburg County Greenbrier  
The surface of tract is owned in fee by Pattie Beavers, etal  
Address Clintonville, W. Va.  
Mineral rights are owned by Same  
Address \_\_\_\_\_

Drilling commenced 5-29-56  
Drilling completed 5-20-58  
Date Shot not shot From \_\_\_\_\_ To \_\_\_\_\_  
With \_\_\_\_\_

Open Flow /10ths Water in \_\_\_\_\_ Inch  
/10ths Merc. in \_\_\_\_\_ Inch  
Volume \_\_\_\_\_ Cu. Ft.

Rock Pressure \_\_\_\_\_ lbs. \_\_\_\_\_ hrs.  
Oil \_\_\_\_\_ bbls. 1st 24 hrs.

WELL ACIDIZED: not acidized

WELL FRACTURED See fracturing record on reverse side.

RESULT AFTER TREATMENT dry hole

ROCK PRESSURE AFTER TREATMENT  
Fresh Water 125' Feet Salt Water 2275' Feet

Casing and Tubing	Used in Drilling	Left in Well	Packers
Size			
16"	24'2"	24'2"	Kind of Packer <u>Midget</u>
13 3/8"	386'6"	<u>Pulled</u>	<u>Bottom Hole Packer</u>
10"			Size of <u>13 3/8"</u>
8 1/4"	2577'6"	2577'6"	<u>Pulled</u>
6 3/4"			Depth set <u>366' SLM</u>
5 3/16"	15.50# 6783'66"	6783.66"	
3"	17#		Perf. top _____
2"			Perf. bottom _____
Liners Used			Perf. top _____
			Perf. bottom _____

CASING CEMENTED \_\_\_\_\_ SIZE \_\_\_\_\_ No. Ft. \_\_\_\_\_ Date \_\_\_\_\_  
See reverse side.

COAL WAS ENCOUNTERED AT none FEET \_\_\_\_\_ INCHES  
FEET \_\_\_\_\_ INCHES FEET \_\_\_\_\_ INCHES  
FEET \_\_\_\_\_ INCHES FEET \_\_\_\_\_ INCHES

Formation	Color	Hard or Soft	Top	Bottom	Oil, Gas or Water	Depth	Remarks
Top Soil			0	12			
Sand			12	76			
Slate			76	87			
Lime			87	92			
Slate & Shells			92	170			
Lime			170	176			
Slate & Shells			176	190			
Red Lime			190	210			
Lime			210	254			
Shale			254	297			
Sand			297	370			
Lime			370	618			
Slate & Shells			618	934			
Lime			934	1005			
Slate & Shells			1005	1270			
Lime			1270	1280			
Slate & Shells			1280	1312			
Lime			1312	1522			
Slate & Shells			1522	2492			
Blue Shale			2492	2506			
Lime and Shale			2506	2641			
Shale			2641	2701			
Lime and Shale			2701	4098			
Shale			4098	4159			
Lime and Shale			4159	5022			
Shale			5022	5630			
Lime and Shale			5630	6011			
Brown Shale			6011	6032			
Shale			6032	6245			
Shale & Gray Lime			6245	6414			

RECEIVED  
WEST VIRGINIA  
DEPT. OF MINES  
JUN 1958

(over)

E-LOG

Formation	Color	Hard or Soft	Top 4'	Bottom	Oil, Gas or Water	Depth Found	Remarks
Chert			6414	6508	6414	6572	6685
Lime and Chert			6508	6572			
Sand			6572	6619	23 13	23 13	23 13
Sand and Shale			6619	6667			
Sand and Lima			6667	6685	41 01	42 59	43 72
Lima			6685	6744			
Total depth				6744'			
This well was drilled to 5853' in Shale with cable tools. Could not drill ahead. Bridged hole at 2492'. Set a whipstock at 2471' in 8 5/8" casing. Moved in rotary tools and drilled a new hole to total depth.							
<b>CASING RECORD</b>							
5-31-56 - Ran 24' 2" of 16" drive pipe.							
6-18-56 - Ran 368' 6" of 13 3/8" casing with Midgat Bottom Hole Packer at 366' SLM. Cased with 9 sacks.							
10-13-57 - Pulled all 13 3/8" casing.							
10-16-57 - Ran 2577' 8" of 8 5/8" 24# casing. Cemented top to bottom with 930 sacks. Cement returns to surface.							
5-22-58 - Ran 6783.65' of 5 1/2" 15.50# and 17# casing with guide shoe on bottom. Ran 5 centralizers - 1 top and bottom of Chert; 1 top, middle and bottom of Sand. Cemented with 200 sacks.							
<b>FRACTURING RECORD</b>							
Drilled out cement in 5" to 6567' Schlumberger - 6675' DLM Measurement							
Before fractured show of gas. Perforated 5" - 6614-17', 6594-99', 6585-89', 6575-80', 6537-40', 6465-88' with 4 shots per foot.							
6-5-58 - Pumped 2000 gal. MCA, 60 bbl. kerosene, 200 bbls. Petrogal with 10,000# sand, 127 perf. balls. Maximum pressure 2850#, Minimum 2000#, Injection rate 1333 gpm. Flushed with 30 bbl. kerosene and 150 bbls. water. Maximum pressure 3000#. Injection rate 1080 gpm. Gas gauged 340M maximum. Started cleaning out, salt water filled to 3000', Drowned out gas.							

Date June 13, 1958

APPROVED Columbian Carbon Company, Owner  
 By Wendall S. Moore, Sup't. of Production  
 (Title)

2000  
 10920  
 7560  
 2450

42  
 200  
 2520  
 2520  
 10920

PATTIE BEAVERS ET AL. NO. 1 (GW-1235) WELL.

Williamsburg District, Greenbrier County, W. Va.  
 By Columbian Carbon Co., Box 873, Charleston, 23, W. Va.  
 Drilled under permit Green-9; Clintonville Quadrangle.  
 On 519 acres, on Sinking Creek.  
 Elevation, 2312.62' L.

Surface and minerals owned by Pattie Beavers et al., Clintonville, W. Va.  
 Drilling commenced May 29, 1956; completed May 20, 1958.  
 Well was not shot or acidized.

Fracturing record: Drilled out cement in 5" to 6667' Schlumberger = 6675'  
 DLM measurement. Before fractured, show of gas. Perforated 5",  
 6614-17', 6594-99', 6585-89'; 6575-80', 6537-40', 6465-88', with  
 4 shots per foot. 6-5-58. Pumped 2000 gals. MCA, 60 bbls. kerosene,  
 200 bbls. Petrogel, with 10,000# sand, 127 perf. balls. Maximum  
 pressure, 2650#, minimum, 2000#; injection rate, 1333 gpm. Flushed  
 with 30 bbls. kerosene and 150 bbls. water. Maximum pressure, 3000#.  
 Injection rate 1080 gpm. Gas gauged 340 M. maximum. Started cleaning  
 out; salt water filled to 3000'. Drowned out gas.

Result after treatment: Dry hole.

Fresh water at 125'.

Salt water at 2275' and after shot in Oriskany Sand.

16" casing, 24' 2"; 13-3/8", 386' 6" (pulled); 8 1/2" 2577' 6"; 5 3/8", B5.50#, 17#,  
 6783.66'.

Midget bottom hole packer, 13-3/8", set at 366' SLM (pulled).

Casing record: 5-31-56. Ran 24' 2" of 16" drive pipe. 6-18-56. Ran  
 368' 6" of 13-3/8" casing with Midget bottom hole packer at 366' SLM.  
 Gelled with 9 sacks. 10-15-57. Pulled all 13/38" casing. 10-16-57.  
 Ran 2577' 6" of 8 5/8" 24# casing. Cemented top to bottom with 930 sacks.  
 Cement returns to surface. 5-22-58. Ran 6783.66' of 5 1/2" 15.50# and  
 17" casing with guide shoe on bottom. Ran 5 centralizers - 1 top and  
 bottom of chert, middle and bottom of sand. Cemented with 200 sacks..

No coal was encountered.

This well was drilled to 5853' in shale with cable tools. Could not drill  
 ahead. Bridged hole at 2492'. Set a whipstock at 2471' in 8 5/8" casing.

Moved in rotary tools and drilled a new hole to total depth.

Dry hole. Record to Dept. of Mines dated June 13, 1958.

Record from Allen June 30, 1958.

	Top.	Bottom.
Top soil	0	12
Sand	12	76
Slate	76	87
Lime	87	92
Slate and shells	92	170
Lime	170	176
Slate and shells	176	190
Red lime	190	210
Lime	210	254
Shale	254	297
Sand	297	370
Lime	370	618
Slate and shells	618	934
Lime	934	1005
Slate and shells	1005	1270
Lime	1270	1280
Slate and shells	1280	1312
Lime	1312	1522
Slate and shells	1522	2492

(OVER)

PATTIE BEAVERS ET AL. NO. 1 (GW-1235) WELL (Contd.)

	Top.	Bottom.
Blue shale	2492	- 2506
Lime and shale	2506	- 2641
Shale	2641	- 2701
Lime and shale	2701	- 4098
Shale	4098	- 4159
Lime and shale	4159	- 5022
Shale	5022	- 5630
Lime and shale	5630	- 6011
Brown shale	6011	- 6032
Shale	6032	- 6245
Shale and gray lime	6245	- 6414
Chert	6414	- 6508
Lime and chert	6508	- 6572
<u>Sand, Oriskany</u>	6572	- 6619
Sand and shale	6619	- 6667
Sand and lime	6667	- 6685
Lime	6685	- 6744
Total depth		6744
		6735' Landing flange measure- ment.

485