

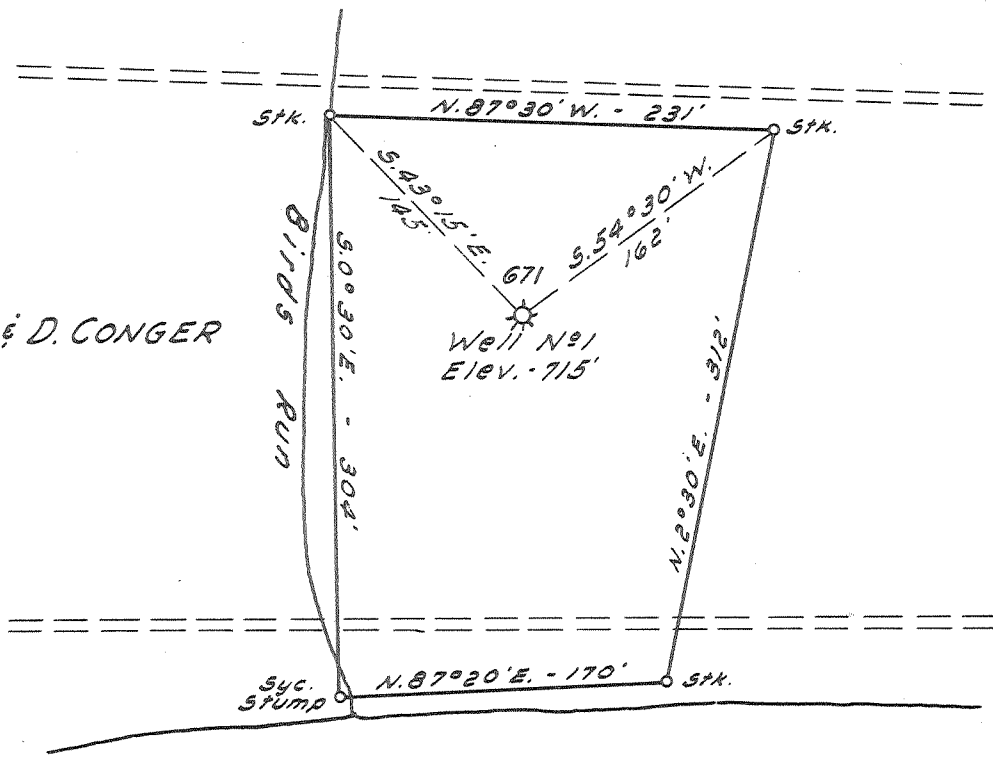
Latitude 39° 00'

3,995
.81W

Longitude 80° 55'

M. DAVIS & D. CONGER

M. DAVIS & D. CONGER



LITTLE KANAWHA RIVER

New Location ..
 Drill Deeper
 Abandonment.....

Company SOUTHEASTERN GAS CO.
 Address UNION BLDG. - CHARLESTON, W. VA.
 Farm O. C. DAVIS
 Tract _____ Acres 1.42 Lease No. 2275
 Well (Farm) No. 1 Serial No. 671
 Elevation (Spirit Level) 715'
 Quadrangle GLENVILLE
 County GILMER District DEKALB
 Engineer JOHN W. HAMILTON
 Engineer's Registration No. 2274
 File No. _____ Drawing No. _____
 Date AUG. 21, 1959 Scale 1"=100'

STATE OF WEST VIRGINIA
 DEPARTMENT OF MINES
 OIL AND GAS DIVISION
 CHARLESTON

WELL LOCATION MAP
 FILE NO. G11 - 443-A

⊕ Denotes location of well on United States Topographic Maps, scale 1 to 62,500, latitude and longitude lines being represented by border lines as shown.
 - Denotes one inch spaces on border line of original tracing.