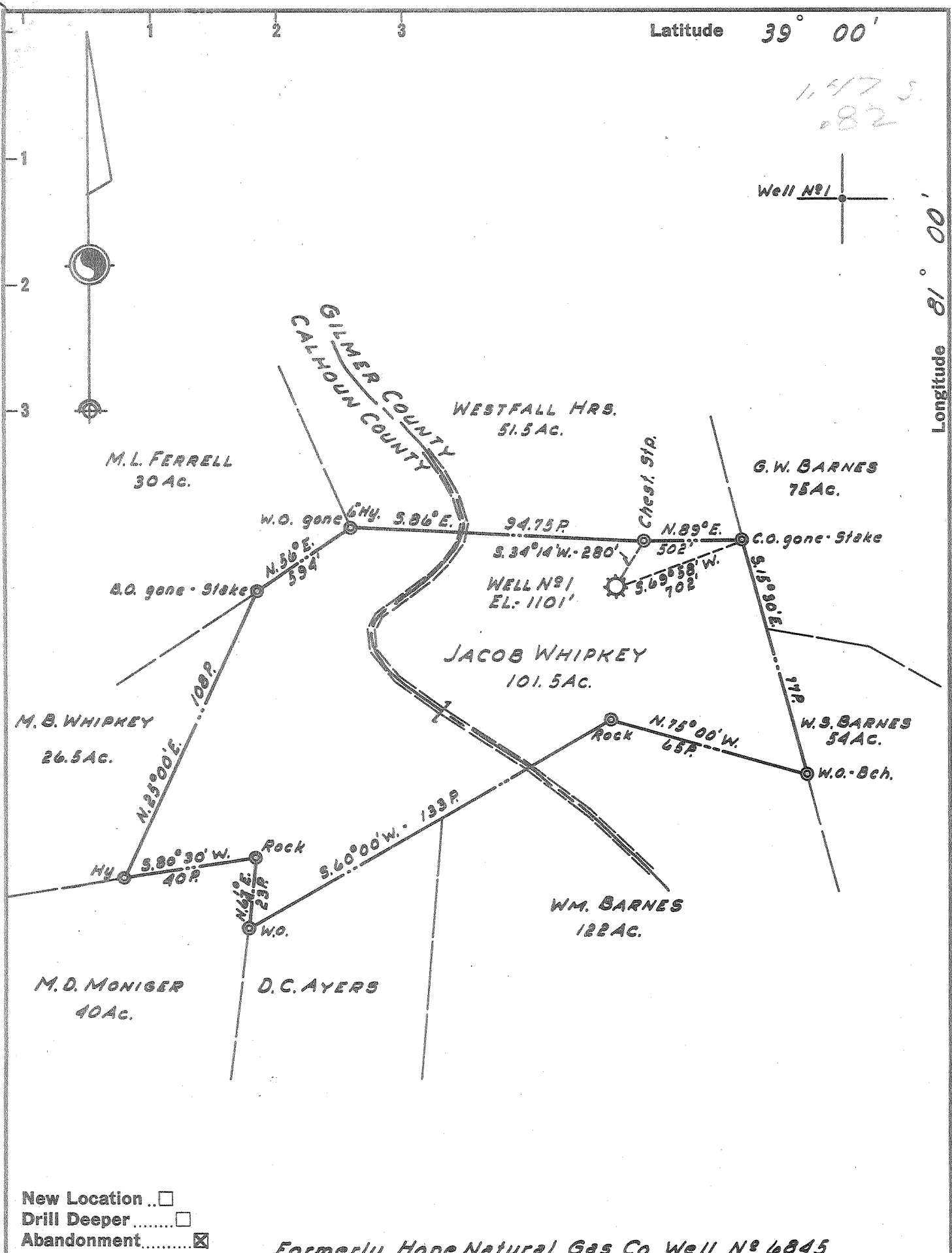


Latitude 39° 00'

11473
082

Longitude 81° 00'



- New Location
- Drill Deeper
- Abandonment

Formerly Hope Natural Gas Co. Well No. 6845

Company LURAY LAND, INC.
 Address POINT PLEASANT, WEST VA.
 Farm JACOB WHIPKEY
 Tract _____ Acres 101.5 Lease No. _____
 Well (Farm) No. 1 Serial No. _____
 Elevation (Spirit Level) 1101'
 Quadrangle ARNOLDSBURG
 County GILMER District DEKALB
 Engineer H.P. SUTER
 Engineer's Registration No. 1805
 File No. _____ Drawing No. _____
 Date MAR. 3, 1959 Scale 1" = 40 POLES.

STATE OF WEST VIRGINIA
 DEPARTMENT OF MINES
 OIL AND GAS DIVISION
 CHARLESTON

WELL LOCATION MAP
 FILE NO. GIL - 433-R

- + Denotes location of well on United States Topographic Maps, scale 1 to 62,500, latitude and longitude lines being represented by border lines as shown.
- Denotes one inch spaces on border line of original tracing.

STATE OF WEST VIRGINIA
DEPARTMENT OF MINES
OIL AND GAS DIVISION

(Handwritten initials)

WELL RECORD

Annual boring grade
Permit No. *433-A*

Oil or Gas Well *Gas*
(Kind)

Company.....
 Address.....
 Farm..... *LuRay Land, Inc.*
 Location (water)..... *Room 40 Capital City Bldg. Acres. 1.07*
Charleston, W. Va.
 Well No..... *Jacob Whipkey* Elev. *102*
 District..... County.....
 The surface of tract is owned in fee by..... *681.5* *1101'*
Kalb ~~Street~~ Address..... *Galbraith Gilmer*
 Mineral rights are owned by.....
 Address.....
 Drilling commenced.....
 Drilling completed.....
 Date shot..... *Dec. 14, 1926* Depth of shot.....
May 3, 1927
 Open Flow /10ths Water in..... Inch
5-727/10ths Merc. in..... Inch
 Volume..... Cu. Ft.
 Rock Pressure..... lbs..... hrs.
 Oil..... bbls., 1st 24 hrs.
 Fresh water..... feet..... feet
 Salt water..... feet..... feet

Casing and Tubing	Used in Drilling	Left in Well	Packers
Size			Kind of Packer.....
16.....			
13.....			
10.....			Size of W. & A.
8 1/4.....	15' 19"	0	6 x 2
6 5/8.....	1081' 1"		Depth set.....
5 3/16.....	2027' 5"		2072' 9"
3.....			Perf. top.....
2.....			Perf. bottom.....
Liners Used.....	2 1/4' <i>Culled</i>		Perf. top.....
	2 1/2'		Perf. bottom.....

CASING CEMENTED..... SIZE..... No. Ft..... Date.....
 COAL WAS ENCOUNTERED AT..... FEET..... INCHES
 FEET..... INCHES..... FEET..... INCHES
 FEET..... INCHES..... FEET..... INCHES

Formation	Color	Hard or Soft	Top	Bottom	Oil, Gas or Water	Depth Found	Remarks
L. Dunkard			900	930	Water	410	
B. Dunkard			1060	1100	Gas		
Gas sand			1140	12000	Gas	1180	
1st salt			1280	1385			
2nd salt			1590	1720	Gas	1649	
3rd salt			1750	1780			
Maxon			1795	1980	Gas	1850-69	
B. Lime			1968	2060			
Injun			2060	2112	Gas	2090-2112	

TO 2107 (kg)

JUL 23 1930

RECEIVED
WEST VIRGINIA
OIL & GAS
DIVISION
1294766785

