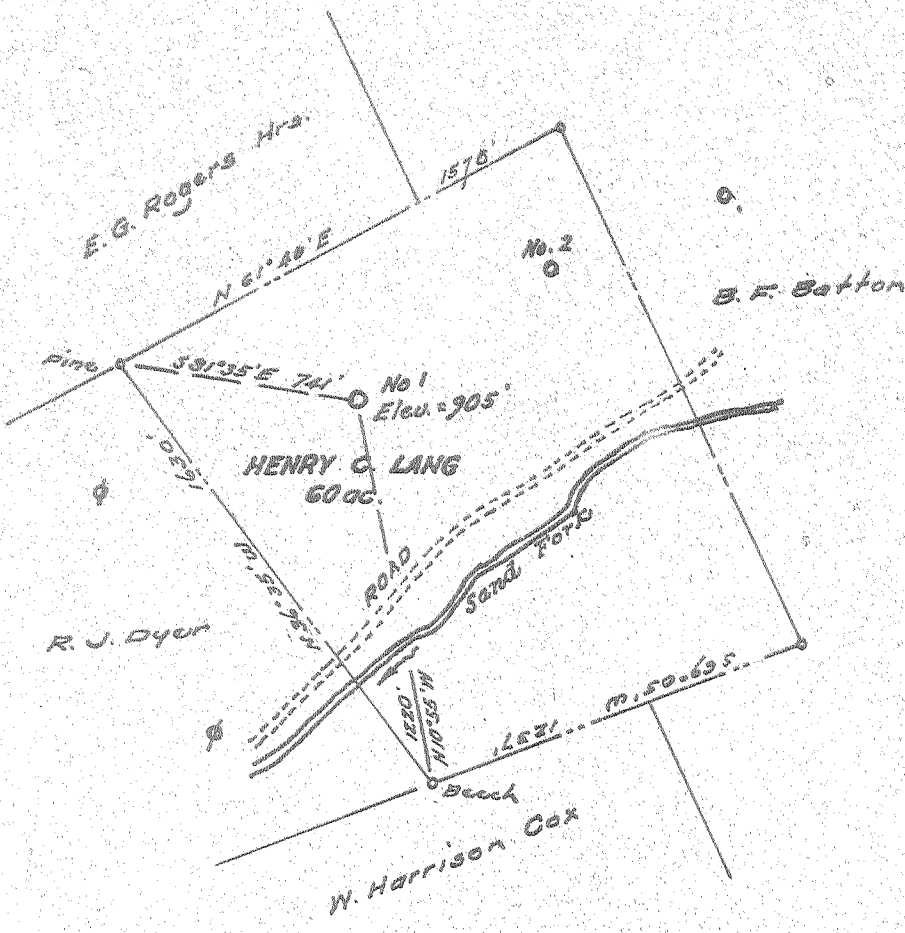


Latitude 39° 00'

Longitude 80° 40'

4.23 E  
1.05 W



New Location...   
 Drill Deeper.....   
 Abandonment.....

*No coal mined in this vicinity  
 Surface owned by Glenn McHenry, of Linn, W. Va.  
 Well formerly owned by the South Penn Nat. Gas. Co.*

Company REX MASON & CO.  
 Address Route 1, Parkersburg, W. Va.  
 Farm Henry C. Lang  
 Tract \_\_\_\_\_ Acres 54 Lease No. \_\_\_\_\_  
 Well (Farm) No. One Serial No. \_\_\_\_\_  
 Elevation (Spirit Level) 905  
 Quadrangle Burnsville  
 County Gilmer District Glenville  
 Engineer W. H. H. J.  
 Engineer's Registration No. 1227  
 File No. \_\_\_\_\_ Drawing No. \_\_\_\_\_  
 Date June 1956 Scale 1" = 600'

STATE OF WEST VIRGINIA  
 DEPARTMENT OF MINES  
 OIL AND GAS DIVISION  
 CHARLESTON

WELL LOCATION MAP  
 FILE NO. GIL-425-A

+ Denotes location of well on United States Topographic Maps, scale 1 to 62,500, latitude and longitude lines being represented by border lines as shown.

- Denotes one inch spaces on border line of original tracing.



STATE OF WEST VIRGINIA  
DEPARTMENT OF MINES  
OIL AND GAS DIVISION

532

WELL RECORD

Burnsville Ind  
#1 125-A

oil

Permit No. 125-A Oil or Gas Well (KIND)

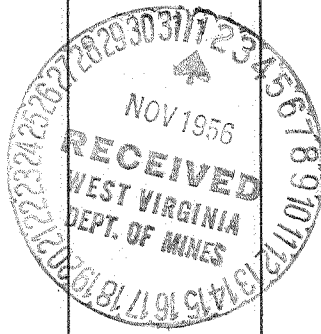
Company Rex Mason & Company  
Address Route 1, Parkersburg, W. Va.  
Farm Henry C. Lang Acres 54  
Location (waters) Sand Fork  
Well No. 1 Elev. 905  
District Glenville County Gilmer  
The surface of tract is owned in fee by Glenn McHenry  
Address Linn, W. Va.  
Mineral rights are owned by No coal mined in this  
Address / vicinity.  
Drilling commenced \_\_\_\_\_  
Drilling completed \_\_\_\_\_  
Date Shot "02-"05-"19 From \_\_\_\_\_ To 2826'  
With 30qts- 60qts-40qts.  
Open Flow /10ths Water in \_\_\_\_\_ Inch  
/10ths Merc. in \_\_\_\_\_ Inch  
Volume \_\_\_\_\_ Cu. Ft.  
Rock Pressure \_\_\_\_\_ lbs. \_\_\_\_\_ hrs.  
Oil \_\_\_\_\_ bbls., 1st 24 hrs.  
Fresh water \_\_\_\_\_ feet \_\_\_\_\_ feet  
Salt water \_\_\_\_\_ feet \_\_\_\_\_ feet

Casing and Tubing	Used in Drilling	Left in Well	Packers
Size			Kind of Packer
16			
13			
10	1275'	84'	Size of
8 1/4	913'	None	
6 5/8	2025'	2025'	Depth set
5 3/16			
3			Perf. top
2			Perf. bottom
Liners Used			Perf. top
			Perf. bottom

CASING CEMENTED \_\_\_\_\_ SIZE \_\_\_\_\_ No. Ft. \_\_\_\_\_ Date \_\_\_\_\_

COAL WAS ENCOUNTERED AT \_\_\_\_\_ FEET \_\_\_\_\_ INCHES  
\_\_\_\_\_ FEET \_\_\_\_\_ INCHES \_\_\_\_\_ FEET \_\_\_\_\_ INCHES  
\_\_\_\_\_ FEET \_\_\_\_\_ INCHES \_\_\_\_\_ FEET \_\_\_\_\_ INCHES

Formation	Color	Hard or Soft	Top	Bottom	Oil, Gas or Water	Depth Found	Remarks
Dunkard Sand			850'	940'			
Salt Sand			1550'	1600'			
Maxon Sand			1775'	1800'			
Big Lime			1900'	1950'			
Big Injun			1950'	2200'			
Gordon Sand			2640'	2650'			
Fifth Sand			2826'	2833'			
TOTAL DEPTH				2864'			
				2864'			



NOV 20 1957