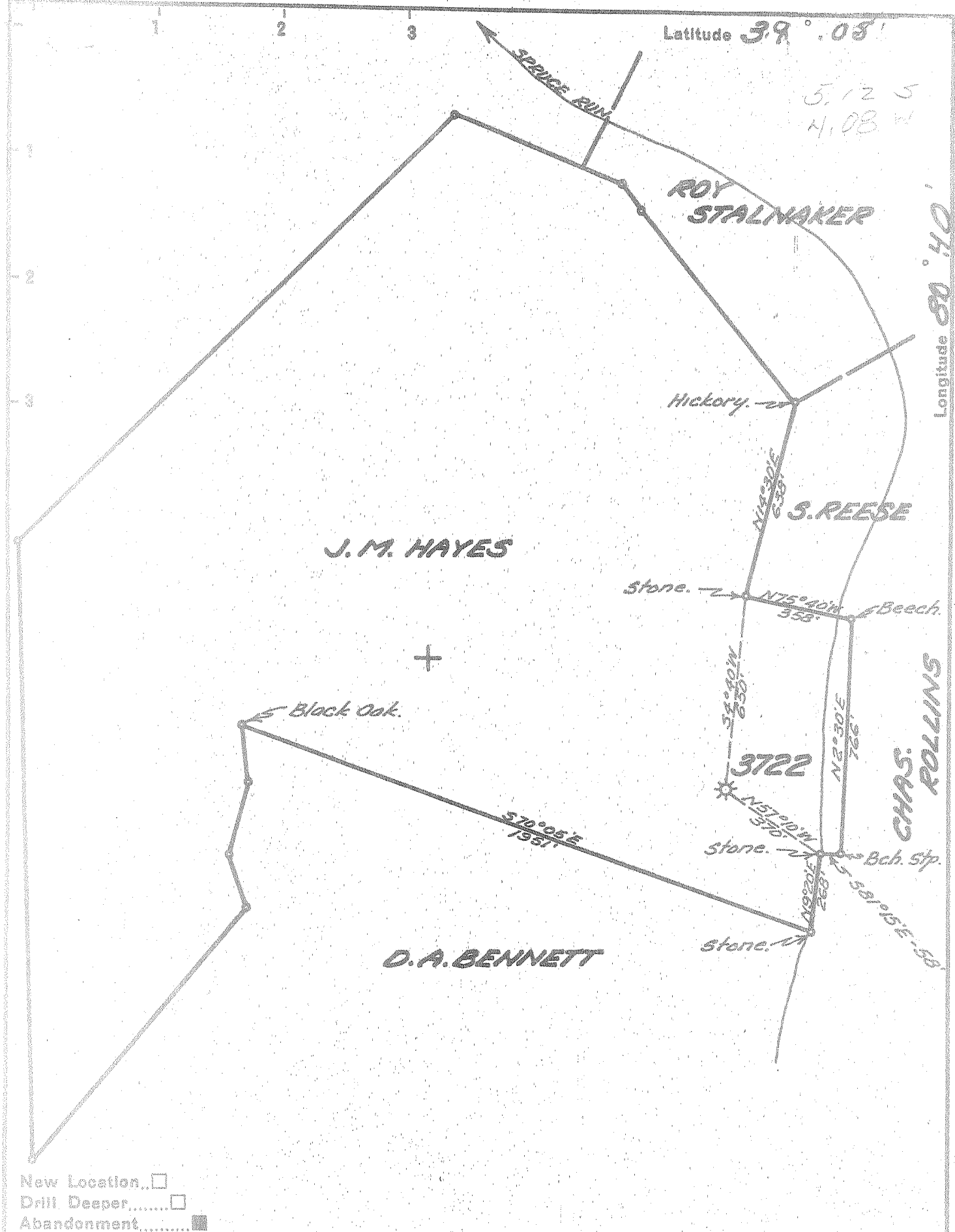


4M



- New Location...
- Drill Deeper.....
- Abandonment.....

Company UNITED FUEL GAS CO.  
 Address CHARLESTON, W. VA.  
 Farm J.M. HAYES  
 Tract \_\_\_\_\_ Acres 126 Lease No. 27177  
 Well (Farm) No. 3 Serial No. 3722  
 Elevation (Spirit Level) 825.00  
 Quadrangle VADIS  
 County GILMER District TROY  
 Engineer Seibert R. Jewell  
 Engineer's Registration No. 2529  
 File No. 108-103 Drawing No. \_\_\_\_\_  
 Date 4-7-54 Scale 1" = 400'

STATE OF WEST VIRGINIA  
 DEPARTMENT OF MINES  
 OIL AND GAS DIVISION  
 CHARLESTON

**WELL LOCATION MAP**  
 FILE NO. GIL-411-A

- + Denotes location of well on United States Topographic Maps, scale 1 to 62,500, latitude and longitude lines being represented by border lines as shown.
- Denotes one inch spaces on border line of original tracing.



STATE OF WEST VIRGINIA  
DEPARTMENT OF MINES  
OIL AND GAS DIVISION

520

Quadrangle Vadis

WELL RECORD

Permit No. 41-A

Oil or Gas Well Gas  
(KIND)

Company UNITED FUEL GAS COMPANY  
Address P.O. Box 1273, Charleston 25, W. Va.  
Farm J. M. Hayes Acres 126  
Location (waters) Spruce Run of Leading Creek  
Well No. 3722 Elev. 825'  
District Troy County Gilmer

The surface of tract is owned in fee by \_\_\_\_\_  
Address \_\_\_\_\_

Mineral rights are owned by D. Cecil Hayes  
Box 385 Address Starkville, Missi.

Drilling commenced Nov. 21, 1923

Drilling completed Dec. 15, 1923

Date Shot 12-21-23 From \_\_\_\_\_ To \_\_\_\_\_

With 45 - Torpedo

Open Flow 25 /10ths Water in 2 Inch

\_\_\_\_\_ /10ths Merc. in \_\_\_\_\_ Inch

Volume 238,000 Cu. Ft.

Rock Pressure 375 lbs. \_\_\_\_\_ hrs.

Oil \_\_\_\_\_ bbls., 1st 24 hrs.

Fresh water \_\_\_\_\_ feet \_\_\_\_\_ feet

Salt water \_\_\_\_\_ feet \_\_\_\_\_ feet

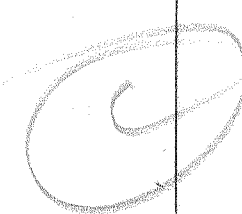
Casing and Tubing	Used in Drilling	Left in Well	Packers
Size			Kind of Packer
16			<u>Anchor</u>
18			Size of
10	<u>100'</u>		<u>2x6-5/8"</u>
8 1/4	<u>725'</u>		Depth set
6 5/8		<u>1545'</u>	<u>240</u> <u>1693'</u>
5 3/16		<u>1305'</u>	Perf. top
3		<u>1733'</u>	Perf. bottom
2		<u>1600'</u>	Perf. top
Liners Used		<u>132'</u>	Perf. bottom

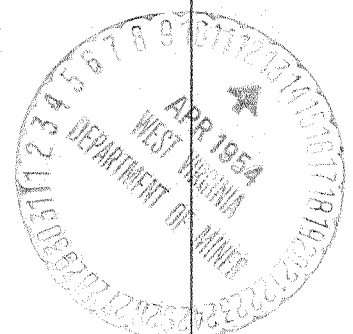
CASING CEMENTED \_\_\_\_\_ SIZE \_\_\_\_\_ No. Ft. \_\_\_\_\_ Date \_\_\_\_\_

COAL WAS ENCOUNTERED AT \_\_\_\_\_ FEET \_\_\_\_\_ INCHES

\_\_\_\_\_ FEET \_\_\_\_\_ INCHES \_\_\_\_\_ FEET \_\_\_\_\_ INCHES

\_\_\_\_\_ FEET \_\_\_\_\_ INCHES \_\_\_\_\_ FEET \_\_\_\_\_ INCHES

Formation	Color	Hard or Soft	Top	Bottom	Oil, Gas or Water	Depth Found	Remarks
Sand, Slate & Shells			0	635	 Gas 1636' 1695 and 1700'		
Little Dunkard			635	650			
Slate & Shells			650	745			
Big Dunkard			745	800			
Slate & Shells			800	900			
Gas Sand			900	975			
Slate & Lime			975	1035			
Salt Sand			1035	1069			
Sand & Slate			1069	1180			
Salt Sand			1180	1202			
Slate & Shells			1202	1342			
Salt Sand			1342	1396			
Slate & Shells			1396	1469			
Maxon Sand			1469	1480			
Slate			1480	1496			
Little Lime			1496	1504			
Pencil Cave			1504	1510			
Sand			1510	1530			
Big Lime			1530	1616			
Big Injun			1616	1723			
Slate			1723	1733			
Total depth			1733'				



APR 22 1955

(Over)

