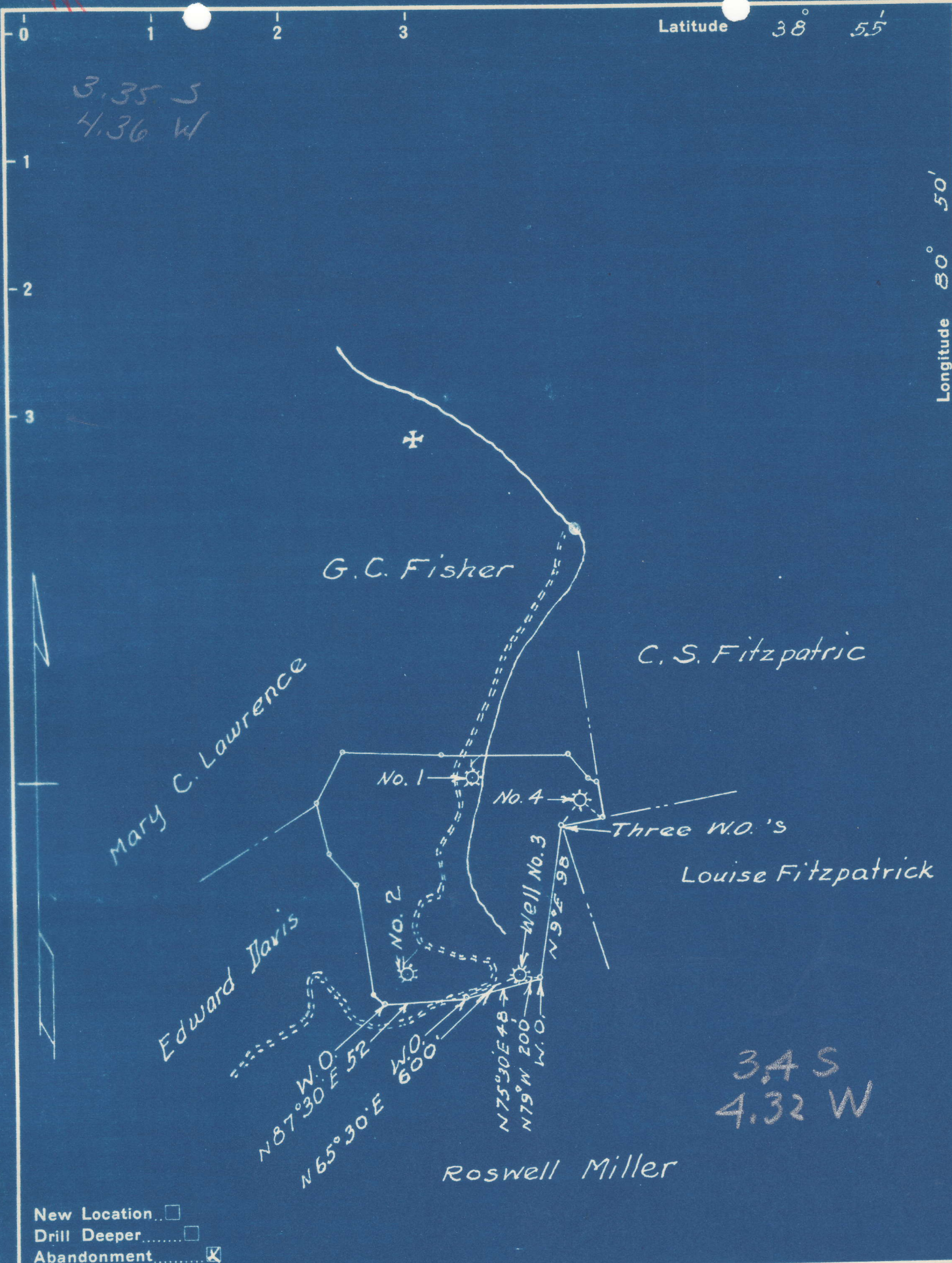


Latitude 38° 55'

Longitude 80° 50'

3.35 S
4.36 W



3.4 S
4.32 W

New Location
 Drill Deeper
 Abandonment

Company Godfrey L. Cabot, Inc.
 Address 900 Union Bldg. Charleston W. Va.
 Farm Lydia J. McKinney
 Tract One Acres 128 1/2 Lease No. 1-266
 Well (Farm) No. 3 Serial No. 763
 Elevation (Spirit Level) 1173'
 Quadrangle Glenville
 County Gilmer District Center
 Engineer Logan McDonald
 Engineer's Registration No. 610
 File No. _____ Drawing No. _____
 Date 4-5-45 Scale 1" = 1320'

STATE OF WEST VIRGINIA
 DEPARTMENT OF MINES
 OIL AND GAS DIVISION
 CHARLESTON

WELL LOCATION MAP
 FILE NO. GIL-331-A

+ Denotes location of well on United States Topographic Maps, scale 1 to 62,500, latitude and longitude lines being represented by border lines as shown.

- Denotes one inch spaces on border line of original tracing.