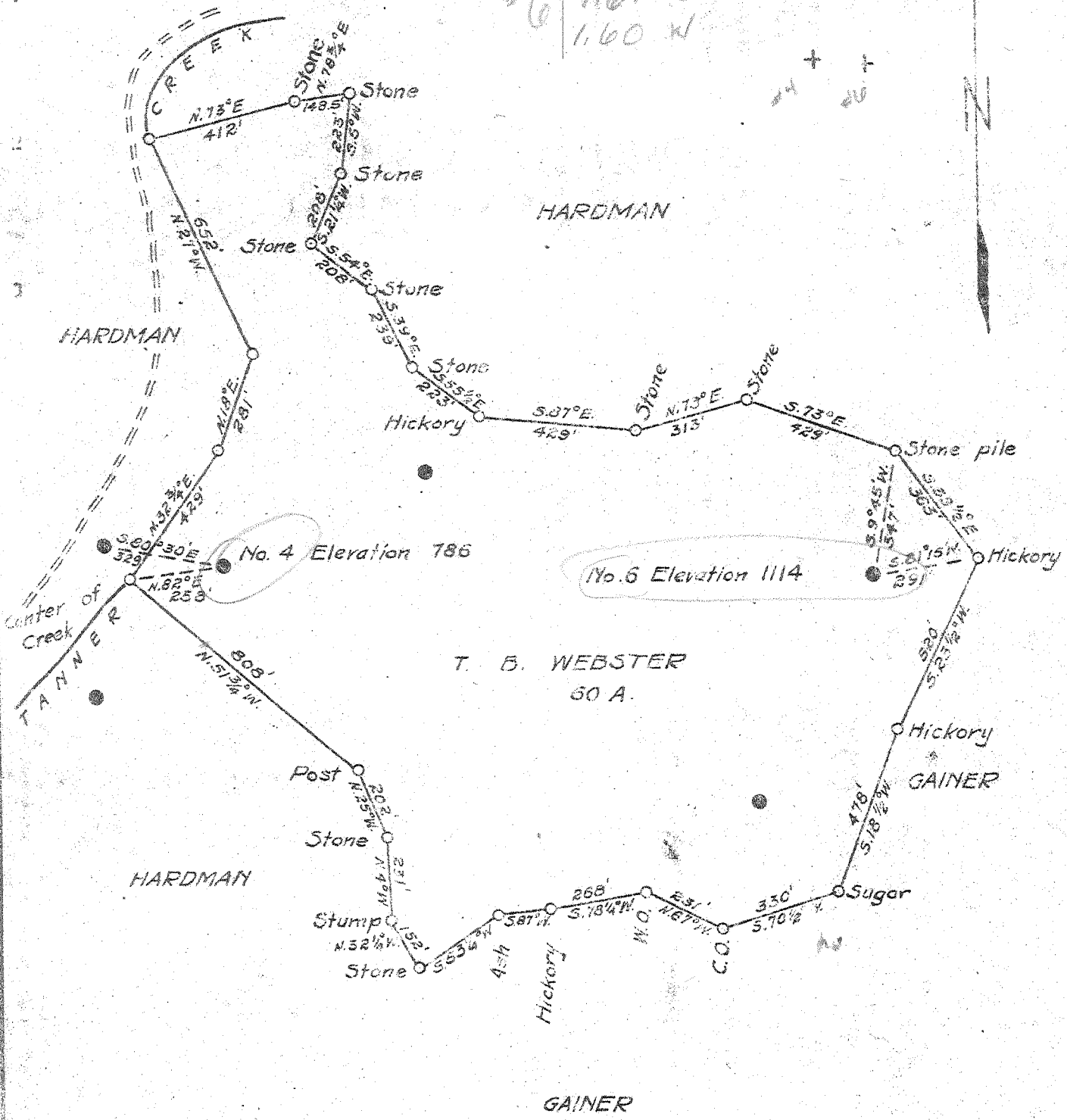


Latitude 39° 00'

Longitude 80° 55'

#4	1.64 S
	1.95 W
#6	1.67 S
	1.60 W



- New Location
- Drill Deeper
- Abandonment

Company	F. S. DEEM	
Address	HARRISVILLE, W. VA.	
Farm	T. B. WEBSTER	
Tract	Acres 50	Lease No.
Well (Farm) No.	4 & 3	Serial No.
Elevation (Spirit Level)	786 & 1114	
Sundrange	GLENVILLE	
County	GILMER	District DE KALB
Engineer	B. F. RINEHART	
Engineer's Registration No.	648	
File No.	Drawing No. 696-DG	
Date	July 20, 1948	Scale 1 in. = 400 ft.

STATE OF WEST VIRGINIA  
DEPARTMENT OF MINES  
OIL AND GAS DIVISION  
CHARLESTON

**WELL LOCATION MAP**  
FILE NO. GIL-275-A-#4  
GIL-273-A-#6

+ Denotes location of well on United States Topographic Maps, scale 1 to 62,500. latitude and longitude lines being represented by border lines as shown.

- Denotes one inch spaces on border line of original tracing.

T. B. WEBSTER NO. 6 WELL.

Dekalb District, Gilmer County, W. Va.

By F. S. Deem, Harrisville, W. Va.

Abandoned under permit Gil-278-A.

On 60 acres, on Tanner Creek.

Elevation, 1114' L.

Surface and minerals owned by T. B. Webster, Glenville, W. Va.

Shot April 15, 1924, at 1868-1885'.

10" casing, 206' (pulled); 8 $\frac{1}{2}$ " , 1136'; 6 $\frac{5}{8}$ " , 1874'.

Oil well. Abandonment reported to Dept. of Mines July 20, 1948.

Record to RCT from Mrs. Griffith Oct. 11, 1948. Old File No. 418.

	Top.	Bottom.
Big Lime	1992	2077
Big Injun Sand (oil and gas, 2089-2093')	2077	2098
Black lime	2098	2104
Total depth		2104



418

STATE OF WEST VIRGINIA  
DEPARTMENT OF MINES  
OIL AND GAS DIVISION

WELL RECORD

Permit No. 278-A

Oil or Gas Well Oil  
(KIND)

Company F. S. Deem  
 Address Harrisville, W.Va.  
 Farm T. P. Webster Acres 60  
 Location (waters) Tanner Creek  
 Well No. 6 Elev. 1114  
 District De Kalb County Gilmer  
 The surface of tract is owned in fee by T. P. Webster  
 Address Glenville, W.Va.  
 Mineral rights are owned by Same  
 Address \_\_\_\_\_  
 Drilling commenced \_\_\_\_\_  
 Drilling completed \_\_\_\_\_  
 Date Shot 4-15-24 From 1868 To 1885  
 With \_\_\_\_\_  
 Open Flow /10ths Water in \_\_\_\_\_ Inch  
/10ths Merc. in \_\_\_\_\_ Inch  
 Volume \_\_\_\_\_ Cu. Ft.  
 Rock Pressure \_\_\_\_\_ lbs. \_\_\_\_\_ hrs.  
 Oil \_\_\_\_\_ bbls., 1st 24 hrs.  
 Fresh water \_\_\_\_\_ feet \_\_\_\_\_ feet  
 Salt water \_\_\_\_\_ feet \_\_\_\_\_ feet

Casing and Tubing	Used in Drilling	Left in Well	Packers
Size			
16			Kind of Packer
18			
10	206		Size of
8 1/4	1136	1136	
6 5/8	1874	1874	Depth set
5 3/16			
3			Perf. top
2			Perf. bottom
Liners Used			Perf. top
			Perf. bottom

CASING CEMENTED \_\_\_\_\_ SIZE \_\_\_\_\_ No. Ft. \_\_\_\_\_ Date \_\_\_\_\_  
 COAL WAS ENCOUNTERED AT \_\_\_\_\_ FEET \_\_\_\_\_ INCHES  
 \_\_\_\_\_ FEET \_\_\_\_\_ INCHES \_\_\_\_\_ FEET \_\_\_\_\_ INCHES  
 \_\_\_\_\_ FEET \_\_\_\_\_ INCHES \_\_\_\_\_ FEET \_\_\_\_\_ INCHES

Formation	Color	Hard or Soft	Top	Bottom	Oil, Gas or Water	Depth Found	Remarks
Big Lime			1992	2077			
Big Injun			2077	2098			
Black Lime			2098	2104			
Total Depth				2104	Oil & Gas	2089-2093	

