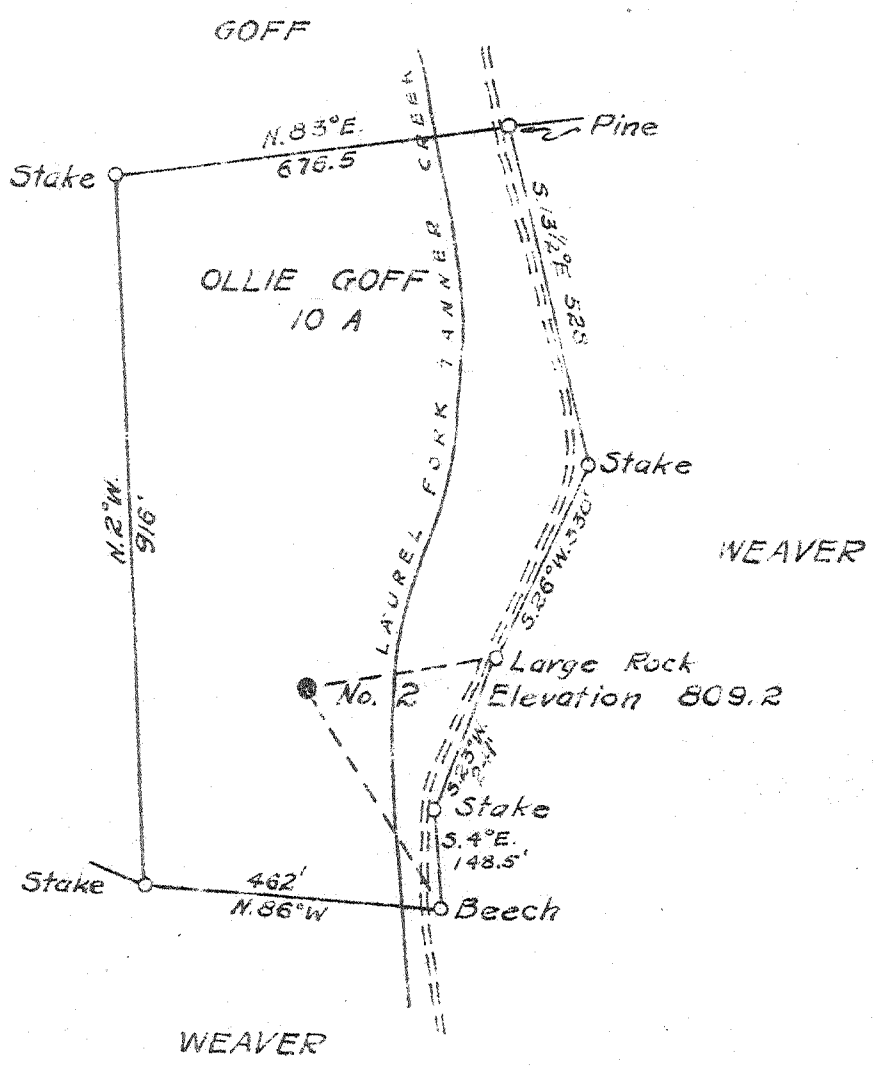


.985
3.35 W



- New Location
- Drill Deeper
- Abandonment

Company	F. S. DEEM
Address	HARRISVILLE, W.VA.
Farm	OLLIE GOFF
Tract	Acres 10 Lease No.
Well (Farm) No.	2 Serial No.
Elevation (Spirit Level)	809.2
Quadrangle	GLENVILLE
County	GILMER District DE KALB
Engineer	B. F. RINEHART
Engineer's Registration No.	648
File No.	Drawing No. 660-DG
Date	Apr. 6, 1948 Scale 1 in. = 300 ft.

STATE OF WEST VIRGINIA
DEPARTMENT OF MINES
OIL AND GAS DIVISION
CHARLESTON

WELL LOCATION MAP
FILE NO. GIL-250-A

+ Denotes location of well on United States Topographic Maps, scale 1 to 62,500, latitude and longitude lines being represented by border lines as shown.

- Denotes one inch spaces on border line of original tracing.