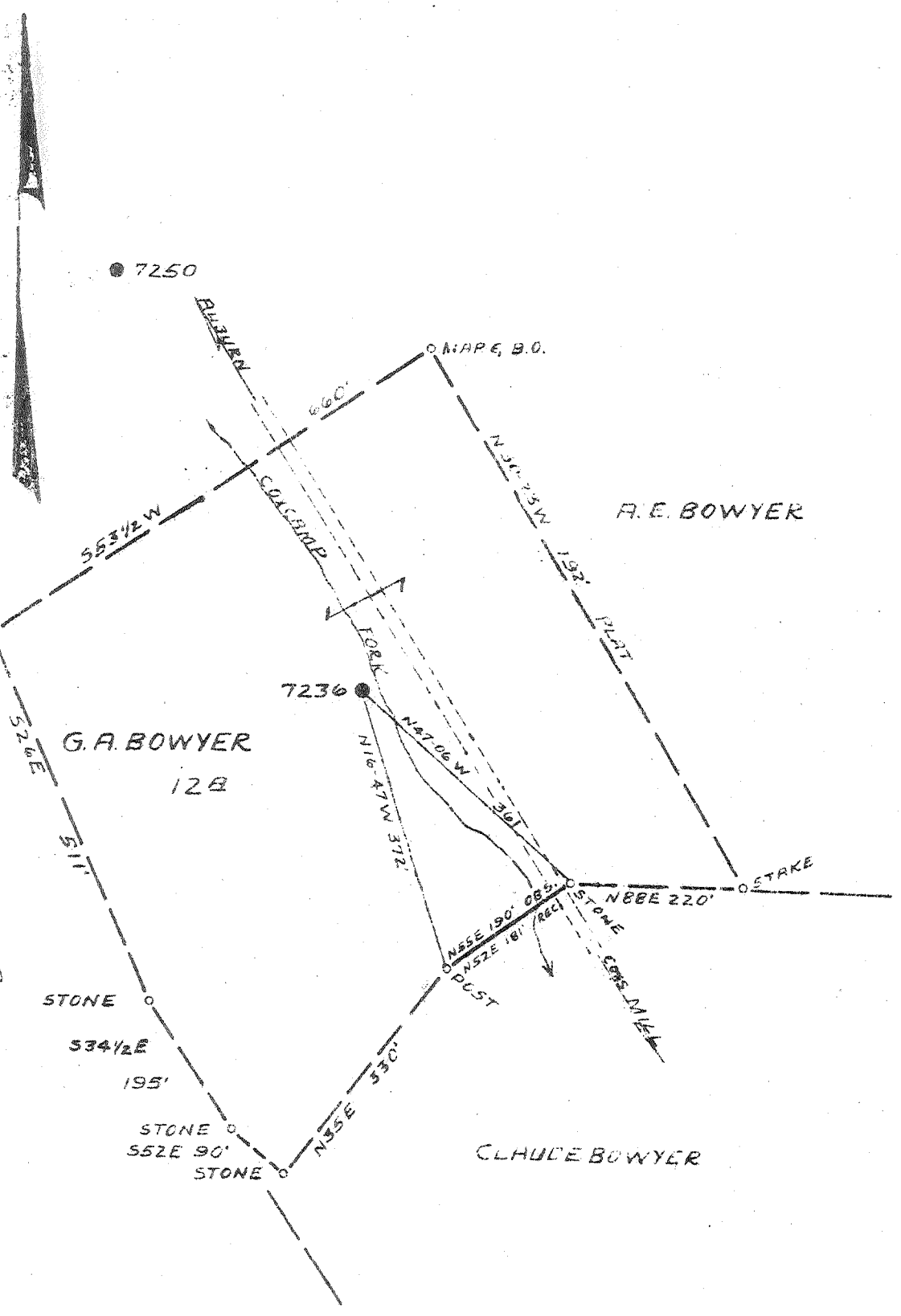


180 S  
.29 W



New Location  
 Drill Deeper  
 Abandonment X

Company PHILADELPHIA OIL CO.  
 Address CLARKSBURG, WVA.  
 Farm G. A. BOWYER  
 Tract \_\_\_\_\_ Acres 12 Lease No. 41  
 Well (Farm) No. ONE Serial No. 7236  
 Elevation (Spirit Level) 841' L.  
 Quadrangle HOLBROOK S.E. 32  
 County GILMER District TROY  
 Engineer Kenneth B. Wilcox  
 Engineer's Registration No. \_\_\_\_\_  
 File No. D-28 P.151 Drawing No. \_\_\_\_\_  
 Date MAR. 11, 1947 Scale. 1" = 200'

STATE OF WEST VIRGINIA  
 DEPARTMENT OF MINES  
 OIL AND GAS DIVISION  
 CHARLESTON

WELL LOCATION MAP  
 FILE NO GIL-235-A

+ Denotes location of well on United States Topographic Maps, scale 1 to 62,500, latitude and longitude lines being represented by border lines as shown.

- Dashed lines represent border line of original tract.

G. A. BOWYER NO. 1 (7236) WELL.

Troy District, Gilmer County, W. Va.  
 By Philadelphia Oil Co., Clarksburg, W. Va.  
 Abandoned under permit Gil-235-A.  
 On 12 acres; Holbrook S/E 3-2.  
 Elevation, 841' L.  
 Minerals owned by G. A. Bowyer, Coxs Mills, W. Va.  
 Drilling commenced Jan. 15, 1919; completed March 14, 1919.  
 10" casing, 85'; 8 $\frac{1}{4}$ " 533'; 6 $\frac{3}{8}$ " 1682'; all left in.  
 Oil well. Abandonment reported to Dept. of Mines Feb. 21, 1947.  
 Record to RCT from Mrs. Griffith May 28, 1947. Old File No. 389.

	Top.	Bottom.
Unrecorded	0	502
Slate, dark, soft	502	602
Lime, white, hard	602	802
Slate, dark, soft	802	902
Lime, white, hard	902	1112
Slate, black, soft	1112	1192
Lime, white, hard	1192	1300
1st Salt Sand, white, hard (gas, 1355-1366')	1300	1370
Slate, dark, soft	1370	1430
2nd Salt Sand, white, hard	1430	1465
Slate, dark, soft	1465	1535
Sand, white, hard	1535	1570
Slate, white, soft	1570	1592
Lime, white, hard	1592	1602
Slate, pink, soft	1602	1617
Little Lime, white, hard	1617	1659
Pencil Cave, white, soft	1659	1663
Big Lime, yellow, hard	1663	1712
Big Injun Sand, yellow, hard (gas, 1722-1724')	1712	1821
Slate, white, shelly	1821	1890
Berea Sand, blue, hard	1890	2050
Slate, dark, soft	2050	2104
Gantz Sand (gas, 2109') (oil, 2113-2123')	2104	....
Total depth		2130



STATE OF WEST VIRGINIA  
DEPARTMENT OF MINES  
OIL AND GAS DIVISION

389

WELL RECORD

"OIL"  
Oil or Gas Well (KIND)

Permit No. 235-A

Company PHILADELPHIA OIL COMPANY.

Address Clarksburg, West Va.,

Farm G. A. Boyer Acres 12

Location (waters) Holbrook S/E. 32

Well No. 7236 Elev. 341'

District Troy County Gilmer

The surface of tract is owned in fee by \_\_\_\_\_  
Address \_\_\_\_\_

Mineral rights are owned by G. A. Boyer  
Address Coxs Mills, W. Va.

Drilling commenced January 15th, 1919

Drilling completed March 14th, 1919

Date Shot \_\_\_\_\_ From \_\_\_\_\_ To \_\_\_\_\_

With \_\_\_\_\_

Open Flow \_\_\_\_\_ /10ths Water in \_\_\_\_\_ Inch  
\_\_\_\_\_ /10ths Merc. in \_\_\_\_\_ Inch

Volume \_\_\_\_\_ Cu. Ft.

Rock Pressure \_\_\_\_\_ lbs. \_\_\_\_\_ hrs.

Oil \_\_\_\_\_ bbls., 1st 24 hrs.

Fresh water \_\_\_\_\_ feet \_\_\_\_\_ feet

Salt water \_\_\_\_\_ feet \_\_\_\_\_ feet

Casing and Tubing	Used in Drilling	Left in Well	Packers
Size			Kind of Packer
16			
13			
10	85'	85'	Size of
8 3/4	533'	533'	
6 5/8	1682'	1682'	Depth set
5 3/16			
3			Perf. top
2			Perf. bottom
Liners Used			Perf. top
			Perf. bottom

CASING CEMENTED \_\_\_\_\_ SIZE \_\_\_\_\_ No. Ft. \_\_\_\_\_ Date \_\_\_\_\_

COAL WAS ENCOUNTERED AT \_\_\_\_\_ FEET \_\_\_\_\_ INCHES  
\_\_\_\_\_ FEET \_\_\_\_\_ INCHES \_\_\_\_\_ FEET \_\_\_\_\_ INCHES  
\_\_\_\_\_ FEET \_\_\_\_\_ INCHES \_\_\_\_\_ FEET \_\_\_\_\_ INCHES

Formation	Color	Hard or Soft	Top	Bottom	Oil, Gas or Water	Depth Found	Remarks
Un-recorded			0	502			
Slate	Dark	Soft	502	602			
Line	White	Hard	602	802			
Slate	Dark	Soft	802	902			
Line	White	Hard	902	1112			
Slate	Black	Soft	1112	1192			
Line	White	Hard	1192	1300			
1st. Salt Sand	"	"	1300	1370	Gas	1355-1366'	
Slate	Dark	Soft	1370	1430			
2nd. Salt Sand	White	Hard	1430	1465			
Slate	Dark	Soft	1465	1535			
Sand	White	Hard	1535	1570			
Slate	"	Soft	1570	1592			
Line	"	Hard	1592	1602			
Slate	Pink	Soft	1602	1617			
Little Line	White	Hard	1617	1659			
Pencil Cave	"	Soft	1659	1663			
Big Line	Yellow	Hard	1663	1712			
Big Injun Sand	"	"	1712	1821	Gas	1722-1724'	
Slate	White	Shelly	1821	1890			
Beres	Blue	Hard	1890	2050			
Slate	Dark	Soft	2050	2104			
Gantz Sand			2104		Gas	2109'	
Total Depth				2130	Oil	2113-2123'	

