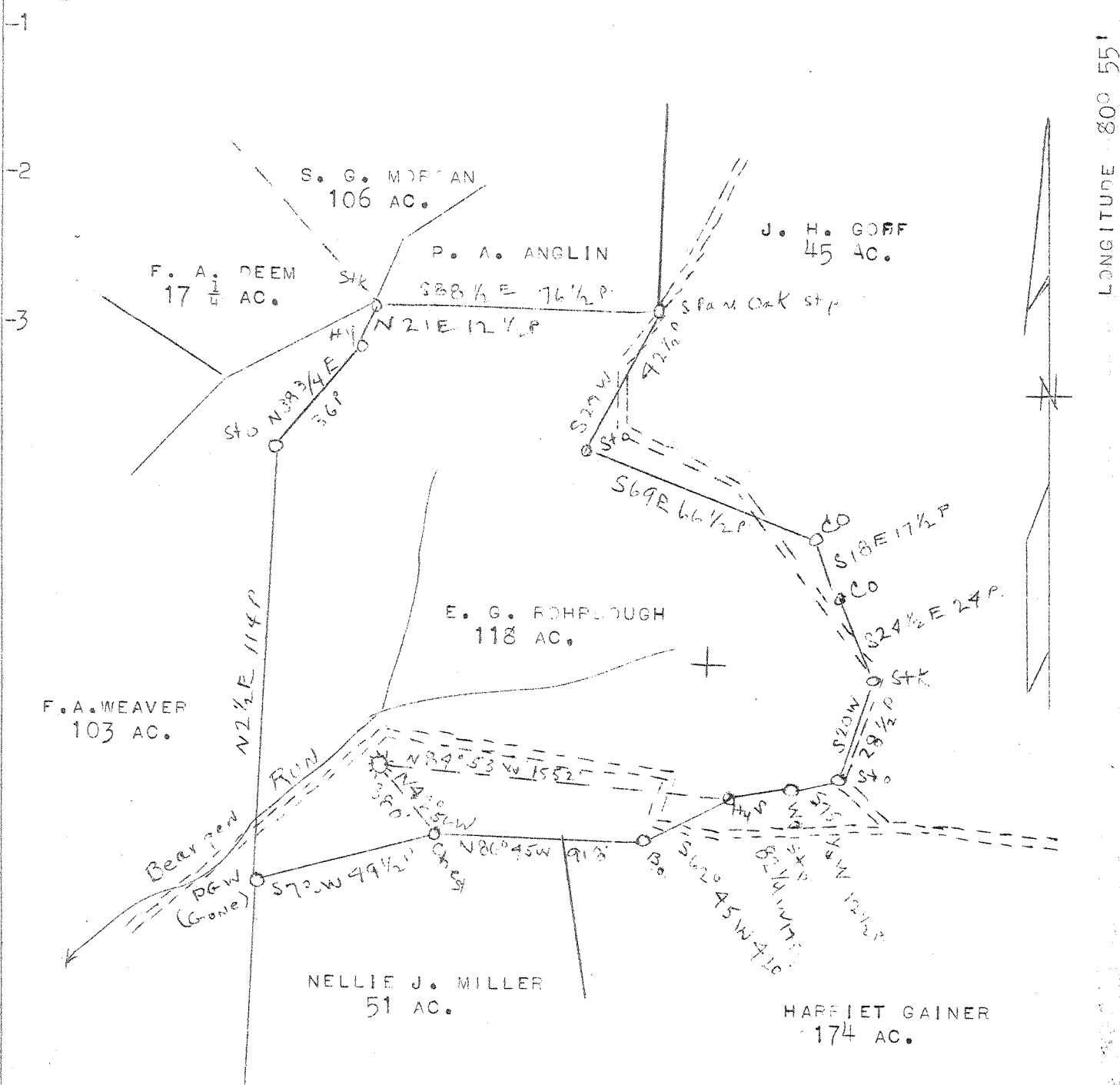


7A

LATITUDE 39° 05'

5.40 S  
2.76 W



NEW LOCATION  
DRILL DEEPER  
ABANDONMENT X

MAP. SH. 87 SQ. S30 N 21 F.B. 783 P. 39

COMPANY HOPE NATURAL GAS CO.  
 ADDRESS CLARKSBURG, W.VA.  
 FARM E. R. ROHRLOUGH  
 TRACT ACRES 118 LEASE NO. 34674  
 WELL (FARM) NO.            SERIAL NO. 5741  
 QUADRANGLE HOLBROOK  
 ELEVATION (SPIRIT LEVEL) 918  
 COUNTY GILMER DISTRICT DE KALB  
 ENGINEER W. M. BOWERS  
 ENGINEER'S REGISTRATION NO. 900  
 FILE NO.            DRAWING NO.             
 DATE MARCH 6, 1946 SCALE 1" = 40 P

STATE OF WEST VIRGINIA  
 DEPARTMENT OF MINES  
 OIL AND GAS DIVISION  
 CHARLESTON

WELL LOCATION MAP  
 FILE NO. GIL - 225 A

+ DENOTES LOCATION OF WELL ON UNITED STATES TOPOGRAPHIC MAPS, SCALE 1 TO 62,500, LATITUDE AND LONGITUDE LINES BEING REPRESENTED BY DOTTED LINES AS SHOWN.

- DENOTES ONE INCH SPACES ON BORDER LINE OF ORIGINAL TRACING.

Dekalb District, Gilmer County, W. Va.

By Hope Natural Gas Co., 445 W. Main St., Clarksburg, W. Va.

Abandoned under permit Gil-225-A.

On 118 acres.

Elevation, 918' L.

Drilling commenced June 14, 1920; completed July 24, 1920.

No water.

10" casing, 180' (pulled); 8 $\frac{1}{4}$ " , 917'; 6 $\frac{5}{8}$ " , 1445'; 2" tubing, 1545'.

Casing not cemented.

No coal recorded.

Gas well. Abandonment reported to Dept. of Mines March 5, 1946.

Record to ROT from Mrs. Griffith July 16, 1946. Old File No. 383.

	Top.	Bottom.
Little Dunkard Sand	840	- 860
Big Dunkard Sand	910	- 932
Gas Sand	965	- 1090
First Salt Sand	1145	- 1240
Second Salt Sand (gas, 1365')	1290	- 1390
Third Salt Sand (gas, 1508-1518')	1435	- 1677
Maxton Sand	1677	- 1743
Little Lime	1767	- 1795
Pencil Cave	1795	- 1800
Big Lime	1800	- 1873
Big Injun Sand (oil, 1875-1885')	1873	- 1941
Total depth		2400
Lower hole abandoned to		1538



383

STATE OF WEST VIRGINIA  
DEPARTMENT OF MINES  
OIL AND GAS DIVISION

WELL RECORD

Oil or Gas Well Gas  
(KIND)

Permit No. 270-A  
Company Hope Natural Gas Company  
Address 445 W. Main St. Clarksburg, W. Va.  
Farm E.C. Rohrbough Acres 118  
Location (waters) \_\_\_\_\_  
Well No. 5741 Elev. 918  
District DeKalb County Gilmer  
The surface of tract is owned in fee by \_\_\_\_\_  
Address \_\_\_\_\_  
Mineral rights are owned by \_\_\_\_\_  
Address \_\_\_\_\_  
Drilling commenced June 14, 1920  
Drilling completed July 24, 1920  
Date Shot \_\_\_\_\_ From \_\_\_\_\_ To \_\_\_\_\_  
With \_\_\_\_\_  
Open Flow \_\_\_\_\_ /10ths Water in \_\_\_\_\_ Inch  
\_\_\_\_\_ /10ths Merc. in \_\_\_\_\_ Inch  
Volume \_\_\_\_\_ Cu. Ft.  
Rock Pressure \_\_\_\_\_ lbs. \_\_\_\_\_ hrs.  
Oil \_\_\_\_\_ bbls., 1st 24 hrs.  
Fresh water none feet \_\_\_\_\_ feet  
Salt water none feet \_\_\_\_\_ feet

Casing and Tubing	Used in Drilling	Left in Well	Packers
Size			
16			Kind of Packer
13			
10	180	None	Size of
8 1/4	917	917	
6 5/8	1445	1445	Depth set
5 3/16			
3			Perf. top
2	1545	1545	Perf. bottom
Liners Used			Perf. top
			Perf. bottom

CASING CEMENTED \_\_\_\_\_ SIZE \_\_\_\_\_ No. Ft. \_\_\_\_\_ Date \_\_\_\_\_  
Not cemented

COAL WAS ENCOUNTERED AT \_\_\_\_\_ FEET \_\_\_\_\_ INCHES  
None recorded  
\_\_\_\_\_ FEET \_\_\_\_\_ INCHES FEET \_\_\_\_\_ INCHES  
\_\_\_\_\_ FEET \_\_\_\_\_ INCHES FEET \_\_\_\_\_ INCHES

Formation	Color	Hard or Soft	Top	Bottom	Oil, Gas or Water	Depth Found	Remarks
Little Dunkard			840	860			
Big Dunkard			910	932			
Gas Sand			965	1090			
First Salt			1145	1240			
Second Salt			1290	1390	Gas	1365	
Third Salt			1435	1677	Gas	1508-1518	
Maxon			1677	1743			
Little Lime			1767	1795			
Pencil cave			1795	1800			
Big Lime			1800	1873			
Injun			1873	1941	Oil	1875-1885	
Drilled to depth of <del>2400</del> ---			2400				
Lower hole abandoned to ---			1538				

