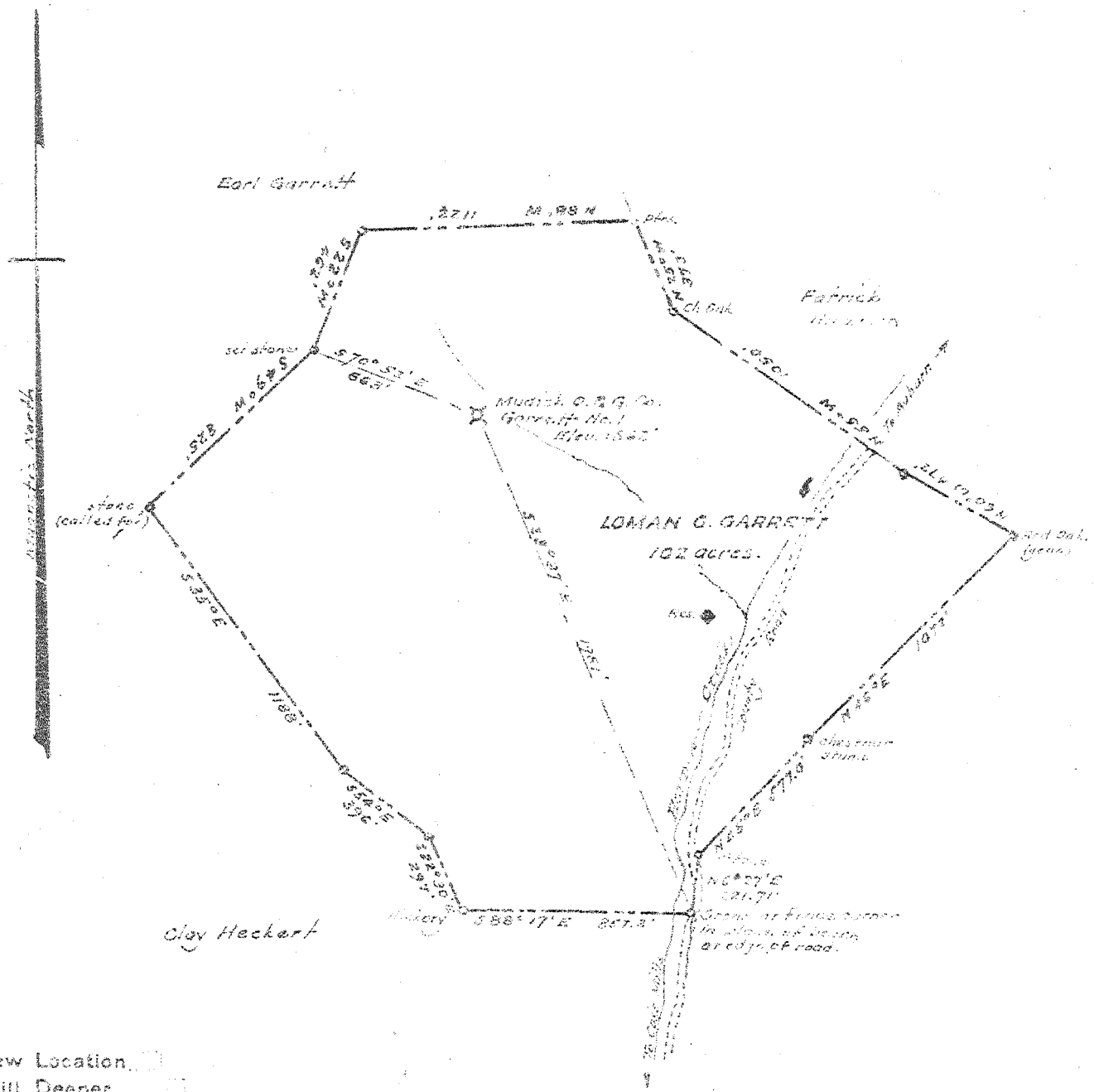


M

76 S
3.63 W

Latitude 39 05'

Longitude 80 15'



- New Location
- Drill Deeper
- Abandonment

Company MUD LICK OIL AND GAS CO.
 Address Keystone Bldg., Pittsburgh, Pa.
 Farm Loman G. Garrett
 Tract _____ Acres 102.0 Lease No. _____
 Well (Farm) No. _____ Serial No. 1-58
 Elevation (Spirit Level) 862'
 Quadrangle Holbrook
 County Gilmer District Troy
 Engineer M. S. Holt, Jr.
 Engineer's Registration No. 1227
 File No. _____ Drawing No. _____
 Date August, 1945 Scale 1" = 600'

STATE OF WEST VIRGINIA
 DEPARTMENT OF MINES
 OIL AND GAS DIVISION
 CHARLESTON

WELL LOCATION MAP
 FILE NO. GIL-215-A

✦ Denotes location of well on United States Topographic Maps, scale 1 to 62,500, latitude and longitude lines being represented by border lines as shown.
 -- Denotes one inch spaces on border line of original map.