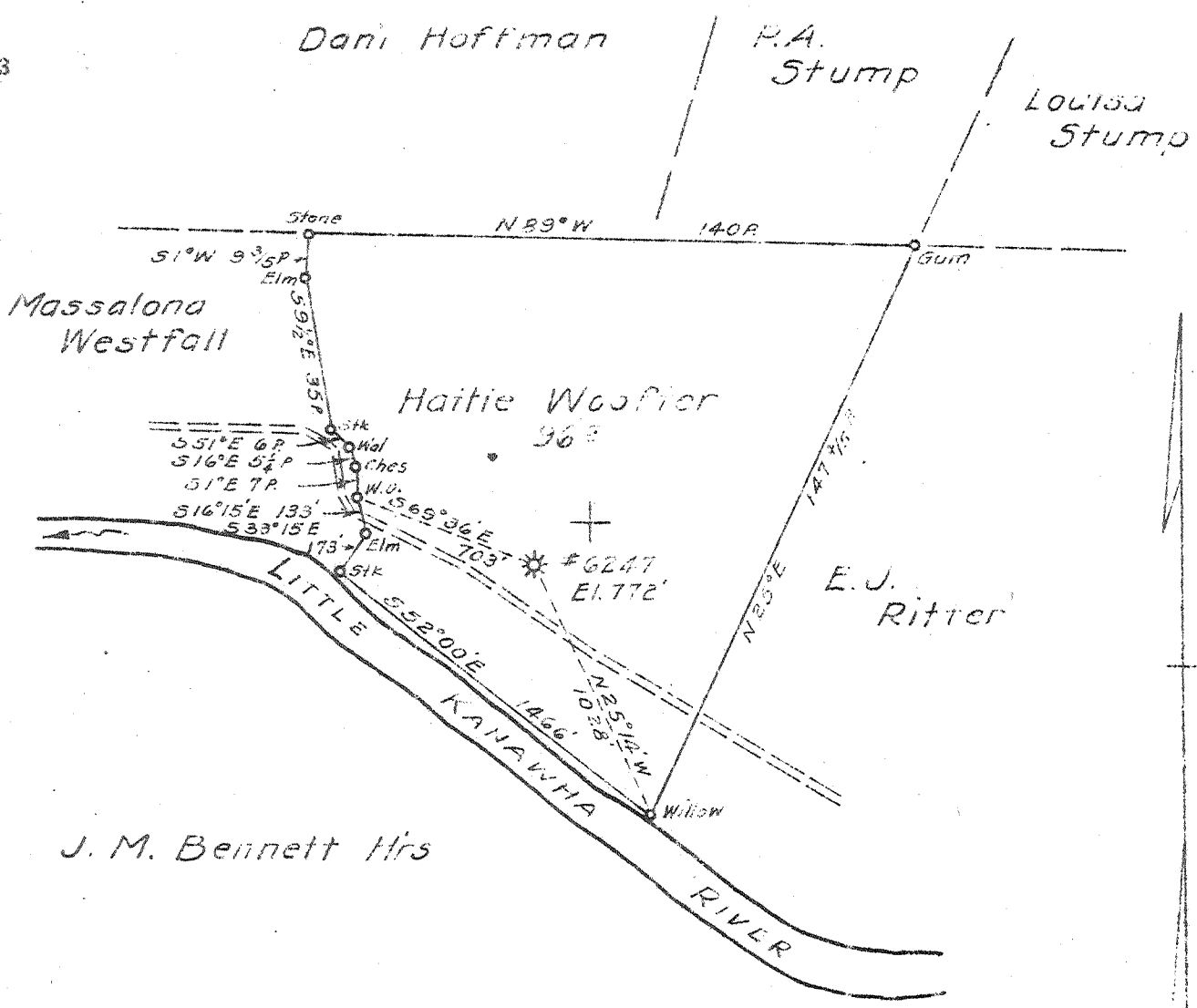


5.73 S
4.02 W

Longitude 80° 55'



New Location
 Drill Deeper
 Abandonment

Map Sh. 87 Sq. 5-36 W-22 F.B. 771 P. 4.

Company	HOPE NATURAL GAS CO.		
Address	CLARKSBURG W. VA.		
Farm	HATTIE WOOFER		
Tract	Acres 96	Lease No.	34462
Well (Farm) No.	Serial No. 6247		
Elevation (Spirit Level)	772'		
Quadrangle	GLENVILLE		
County	GILMER	District	DEKALB
Engineer	W.M. Bowen		
Engineer's Registration No.	900		
File No.	Drawing No.		
Date	5-18-45	Scale	1" = 40 P.

STATE OF WEST VIRGINIA
 DEPARTMENT OF MINES
 OIL AND GAS DIVISION
 CHARLESTON

WELL LOCATION MAP
 FILE NO. G-11-209-A

+ Denotes location of well on United States Topographic Map No. 62500. Latitude and longitude being represented by border lines as shown.

- Denotes one of the corners on border line of original tract.

2421