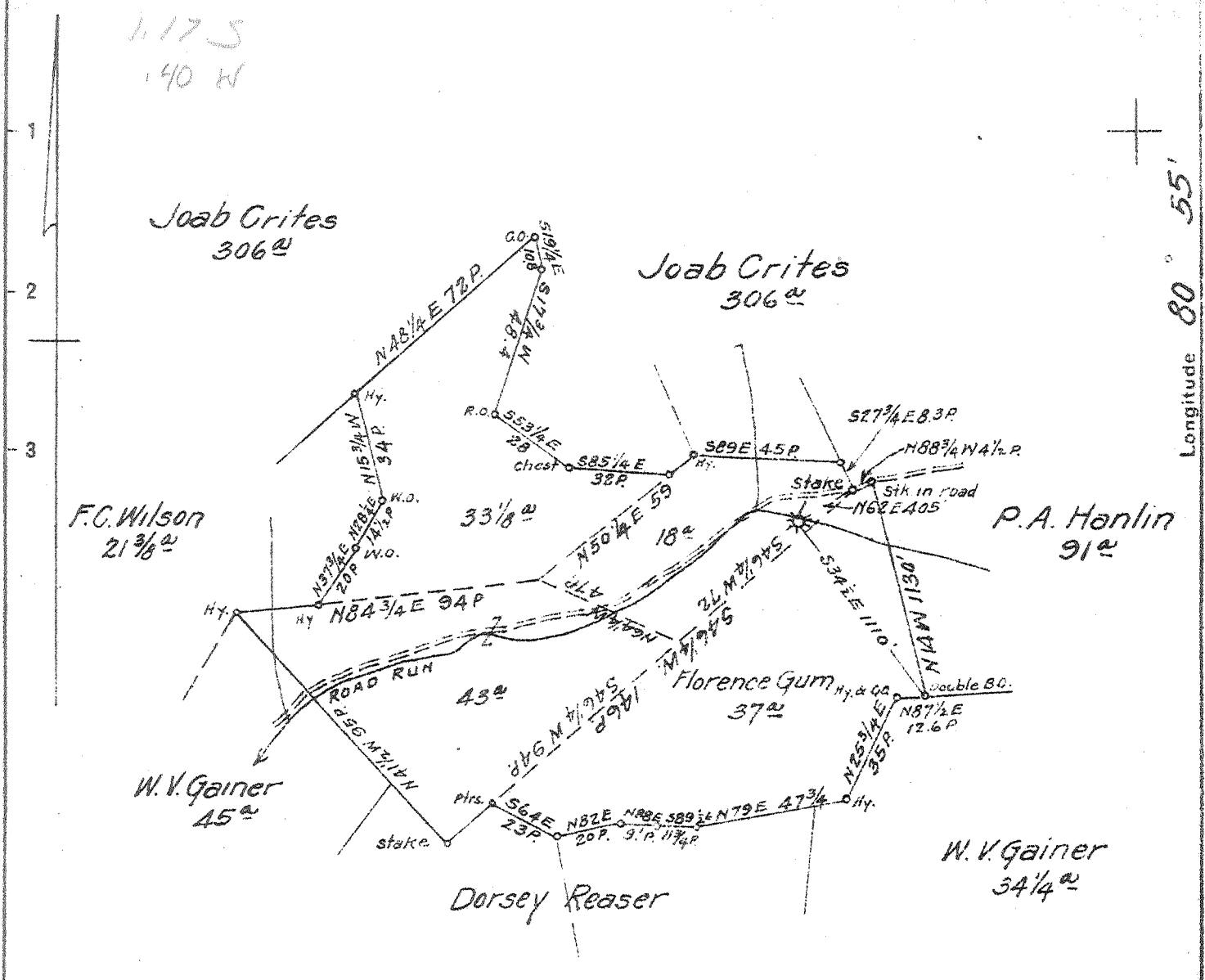


Latitude 39 00



No Coal
 Surface: Blaine Wilson
 Glenville, W. Va.

New Location.....
 Drill Deeper.....
 Abandonment..... X

532W18 Map 25

Company	South Penn Natural Gas Co.		
Address	Parkersburg, W. Va.		
Farm	Florence Gum		
Tract	Aores	140	Lease No. 71461 71348
Well (Farm) No.	1	Serial No.	
Elevation (Spirit Level)	915.00		
Quadrangle	Glenville		
County	Gilmer	District	Dekalb
Engineer	E.C. Tabler		
Engineer's Registration No.			
File No.	Drawing No.		
Date	12-6-43	Scale	1" = 800'

STATE OF WEST VIRGINIA
 DEPARTMENT OF MINES
 OIL AND GAS DIVISION
 CHARLESTON

WELL LOCATION MAP
 FILE NO. GIL-198-A

+ Denotes location of well on United States Topographic Maps, scale 1 to 62,500. latitude and longitude lines being represented by border lines as shown.
 - Denotes one inch spaces on border line of original tracing.