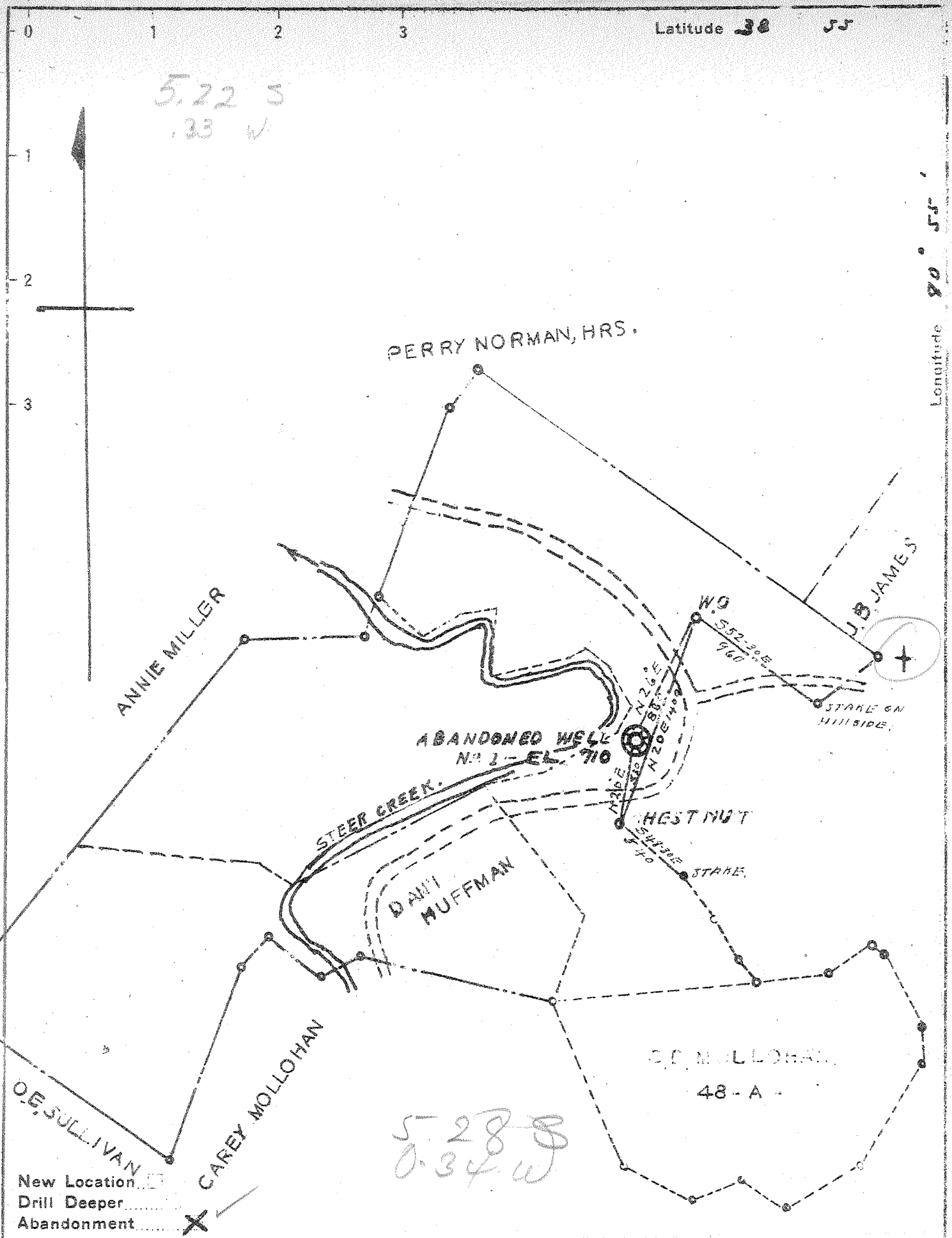


mm



Company STEER CREEK OIL & GAS CO.
 Address 918 BIGLEY AVE CHARLESTON, W. VA.
 Farm C. D. MOLLOHAN
 Tract _____ Acres 180 Lease No. _____
 Well (~~Farm~~) No. 1 Serial No. _____
 Elevation (Spirit Level) 710
 Quadrangle GLENVILLE
 County GILMER District CENTER
 Engineer J. D. Moore
 Engineer's Registration No. 159
 File No. _____ Drawing No. _____
 Date OCT. 27, 19-1 Scale 1" = 800'

STATE OF WEST VIRGINIA
 DEPARTMENT OF MINES
 OIL AND GAS DIVISION
 CHARLESTON

WELL LOCATION MAP
 FILE NO. GIL-174-A

+ Denotes location of well on United States Topographic Maps, scale 1 to 62,500, latitude and longitude lines being represented by border lines as shown.

— Denotes one inch spaces on border line of original tracing.