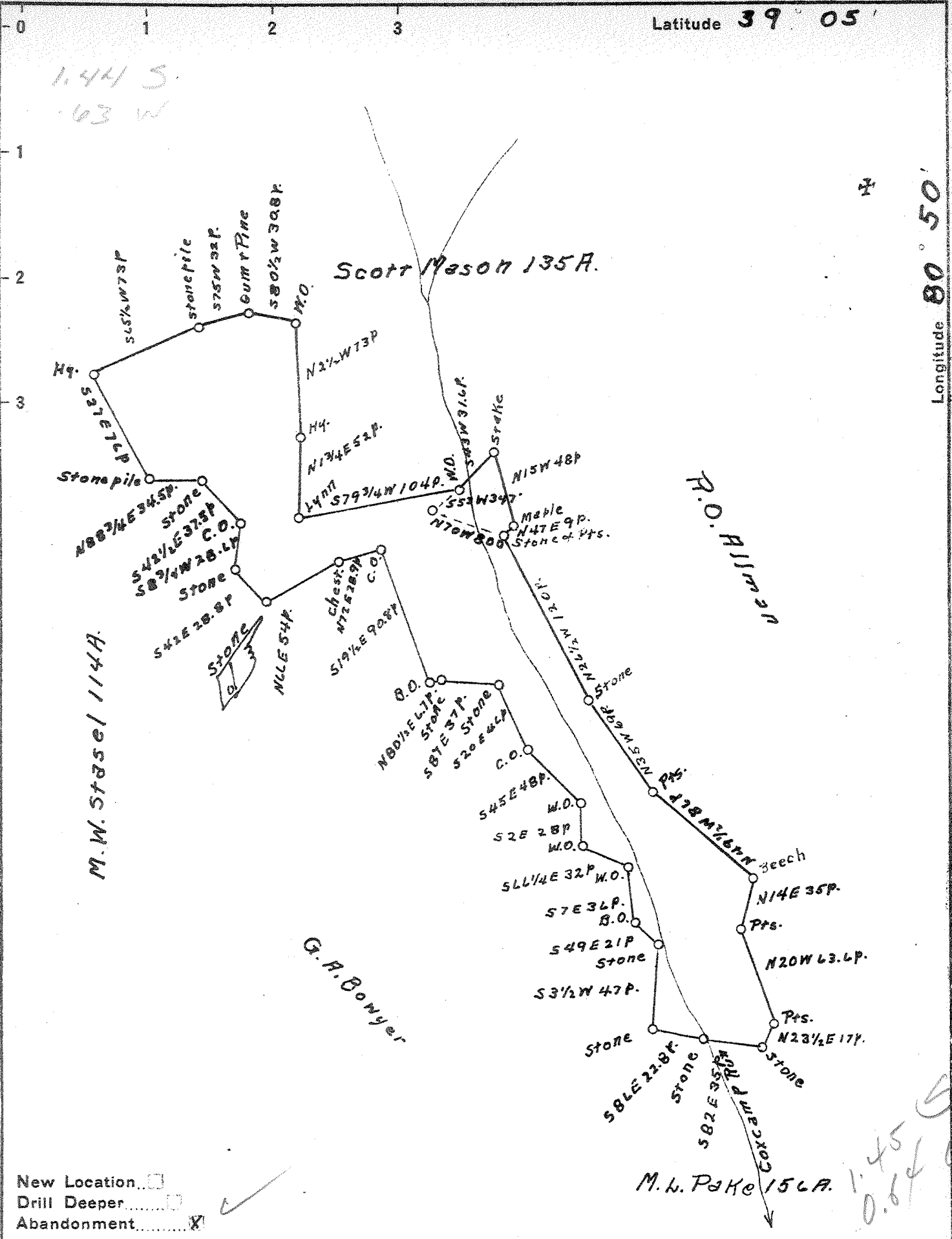


Latitude 39° 05'

Longitude 80° 50'

1.44 S.
63 W



New Location
 Drill Deeper
 Abandonment

1.45 S
0.64 W

Company J. H. Ferrell
 Address Grantsville, W. Va.
 Farm Parr - Boyer
 Tract 3 Acres 237 Lease No. _____
 Well (Farm) No. H.C.R. 497 Serial No. _____
 Elevation (Spirit Level) 1040'
 Quadrangle Holbrook
 County Gilmer District Troy
 Engineer Bruce Ferrell, Jr.
 Engineer's Registration No. _____
 File No. _____ Drawing No. _____
 Date July 10, 1941 Scale 80 P. = 1"

STATE OF WEST VIRGINIA
 DEPARTMENT OF MINES
 OIL AND GAS DIVISION
 CHARLESTON

WELL LOCATION MAP
 FILE NO. GIL-157A

+ Denotes location of well on United States Topographic Maps, scale 1 to 62,500, latitude and longitude lines being represented by border lines as shown.
 - Denotes one inch spaces on border line of original tracing.