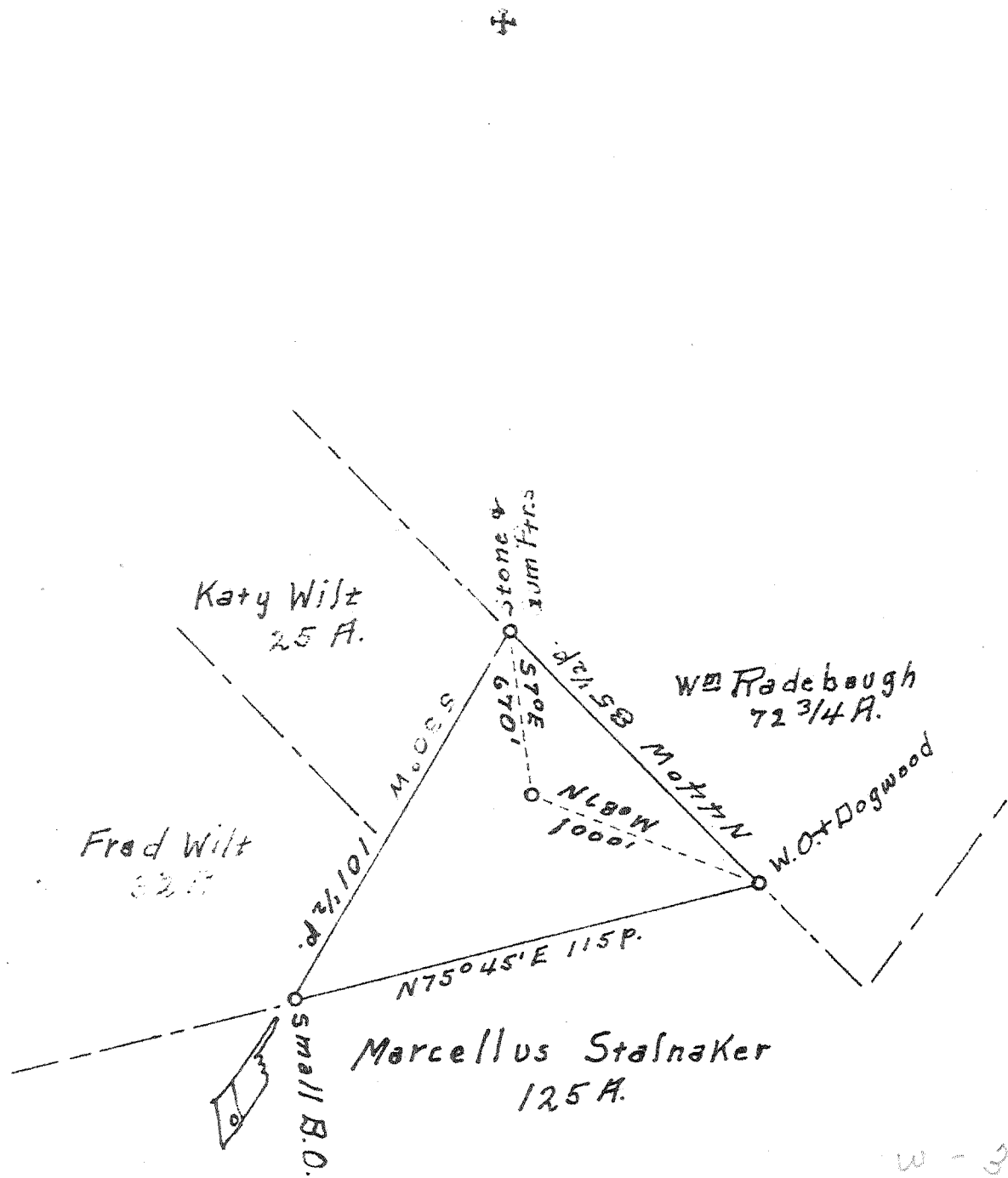


Latitude 39° 00'

Longitude 80° 55'

1.495
3.86 W



W - 3.9
S - 1.5

New Location
 Drill Deeper
 Abandonment

Sheet #3

Company J. H. Ferrell
 Address Grantsville, W. Va.
 Farm M. Stalaker
 Tract Acres 26 Lease No. 1003
 Well (Farm) No. 2-931 Serial No. 26254
 Elevation (Spirit Level) 995'
 Quadrangle Glennville N.W.
 County Cecilmer District DeKalb
 Engineer Bruce Ferrell, Jr.
 Engineer's Registration No.
 File No. Drawing No.
 Date Aug. 16, 1940 Scale 40p = 1"

STATE OF WEST VIRGINIA
 DEPARTMENT OF MINES
 OIL AND GAS DIVISION
 CHARLESTON

WELL LOCATION MAP
 FILE NO. GIL-146A

+ Denotes location of well on United States Topographic Maps, scale 1 to 62,500, latitude and longitude lines being represented by border lines as shown.
 - Denotes one inch spaces on border line of original tracing