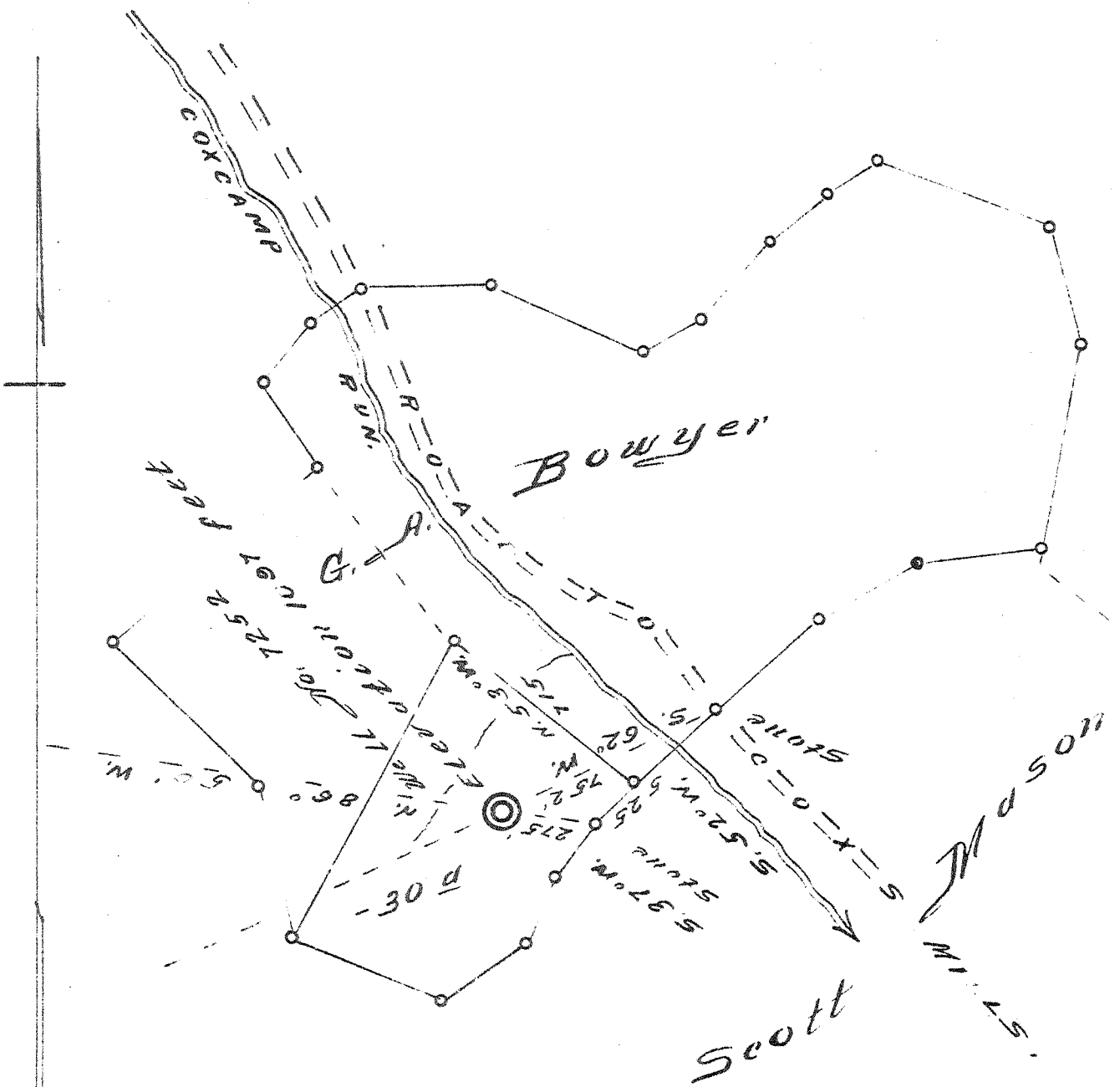


Latitude 39° 05'

2.06 S
.37 W

Longitude 80° 50'



0.39 W
2.10 S

COMPANY H.E. Milliken & A.M. Shider
 ADDRESS Waynesburg, Penn.
 FARM G. A. Bowyer
 TRACT TWO 30 acres
 WELL Abandonment No. 7252
 QUADRANGLE Holbrook, S.C.
 DISTRICT Troy
 COUNTY Gilmer
 ENGINEER David Weed
 REGIS. No. 233-16-5767
 DATE May 2 - 1940.
 SCALE 1 inch = 500 feet.

State of West Virginia
 Department of Mines
 Oil & Gas Division
 Charleston
 Well Location Map
 File No. G16-141A

Troy District, Gilmer County, W. Va.

By Milliken & Snyder, Waynesburg, Pa.

Abandoned under permit ~~22111A~~ Gilmer 141-A

On 30 acres, on Coxcamp Run.

Elevation, 1097' L.

Drilling commenced June 2, 1919; completed, July 10, 1919.

10" casing, 205'; 8 $\frac{1}{4}$ "", 865'; 6 $\frac{5}{8}$ "", 1866'; all left in.

Casing not cemented. No coal was encountered.

(Purchased from Philadelphia Oil Company).

Oil well. Abandonment reported to Dept. of Mines May 6, 1940.

Record to RGT from Mrs. Griffith July 15, 1940.

	Top.	Bottom.
Slate	0	25
Sand	25	65
Slate	65	100
Sand	100	125?
Red rock	175?	200
Lime	250	310
Lime	400	450
Red rock	480	500
Lime	560	590
Red rock	590	615
Lime	690	720
Sand	750	760
Slate and shells	760	890
Lime	890	950
Slate and shells	950	1025
Lime shells	1025	1075
Lime	1075	1100
Slate-Shells	1100	1140
Lime	1140	1200
Sand	1200	1255
Slate	1255	1300
Lime	1300	1340
Slate	1340	1455
Slate shells	1455	1480
Sand	1480	1520
Lime	1520	1550
First Salt Sand	1550	1625
Slate-Shells	1625	1685
Lime	1685	1710
Salt Sand (gas, 1740')	1710	1765
Slate	1765	1790
Red rock	1790	1800
Blue Monday Sand	1800	1830
Little Lime	1830	1845
Pencil Cave	1845	1852
Big Lime	1852	1911
Big Injun Sand	1911	2006
Slate	2006	2070
Berea Grit	2070	2160
Slate-Shells	2160	2282
Gantz Sand (gas and oil, 2294-2309')	2282
Total depth		2311

STATE OF WEST VIRGINIA
DEPARTMENT OF MINES
OIL AND GAS DIVISION

263

Purchased from
Philadelphia Oil Company

WELL RECORD

Permit No. 141A

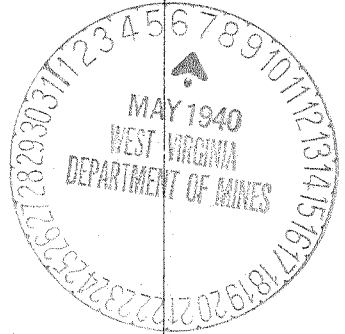
Oil or Gas Well Oil
(Kind)

Company Milliken & Snider
Address Waynesburg, Pa.
Farm G. A. Bowyer Acres 30
Location (waters) Coxcamp Run
Well No. 7252 Elev. 1097
District Troy County Gilmer
The surface of tract is owned in fee by.....
Address.....
Mineral rights are owned by.....
Address.....
Drilling commenced June 2, 1919
Drilling completed July 10, 1919.
Date shot..... Depth of shot.....
Open Flow /10ths Water in..... Inch
/10ths Merc. in..... Inch
Volume..... Cu. Ft.
Rock Pressure..... lbs..... hrs.
Oil..... bbls., 1st 24 hrs.
Fresh water..... feet..... feet
Salt water..... feet..... feet

Casing and Tubing	Used in Drilling	Left in Well	Packers
Size			
16			Kind of Packer.....
13			
10	205	205	Size of.....
8 1/4	865	865	
6 5/8	1866	1866	Depth set.....
5 3/16			
3			Perf. top.....
2			Perf. bottom.....
Liners Used.....			Perf. top.....
			Perf. bottom.....

CASING CEMENTED..... SIZE..... No. Ft..... Date
Not cemented
No coal
COAL WAS ENCOUNTERED AT..... FEET..... INCHES
..... FEET..... INCHES..... FEET..... INCHES
..... FEET..... INCHES..... FEET..... INCHES

Formation	Color	Hard or Soft	Top	Bottom	Oil, Gas or Water	Depth Found	Remarks
Slate			0	25			
Sand			25	65			
Slate			65	100			
Sand			100	125			
Red Rock			175	200			
Lime			250	310			
Lime			400	450			
Red Rock			480	500			
Lime			560	590			
Red Rock			590	615			
Lime			690	720			
Sand			750	760			
Slate & Shells			760	890			
Lime			890	950			
Slate & Shells			950	1025			
Lime shells			1025	1075			
Lime			1075	1100			
Slate-Shells			1100	1140			
Lime			1140	1200			
Sand			1200	1255			
Slate			1255	1300			
Lime			1300	1340			
Slate			1340	1455			
Slate Shells			1455	1480			
Sand			1480	1520			
Lime			1520	1550			
First Salt Sand			1550	1625			
Slate-Shells			1625	1685			
Lime			1685	1710			
Salt Sand			1710	1765	Gas	1740	
Slate			1765	1790			
Red Rock			1790	1800			
Blue Monday Sand			1800	1830			
Little Lime			1830	1845			
Pencil Cave			1845	1852			
Big Lime			1852	1911			
Big Injun Sand			1911	2006			
Slate			2006	2070			
Berea Grit			2070	2160			
Slate -Shells			2160	2282			
Gantz Sand			2282				
Total Depth				2311	Gas & Oil	2294-2309	



JUL 15 1940

Formation	Color	Hard or Soft	Top	Bottom	Oil, Gas or Water	Depth Found	Remarks

Date May 6, 1940

APPROVED Milliken & Snider, Owner

By.....
(Title)