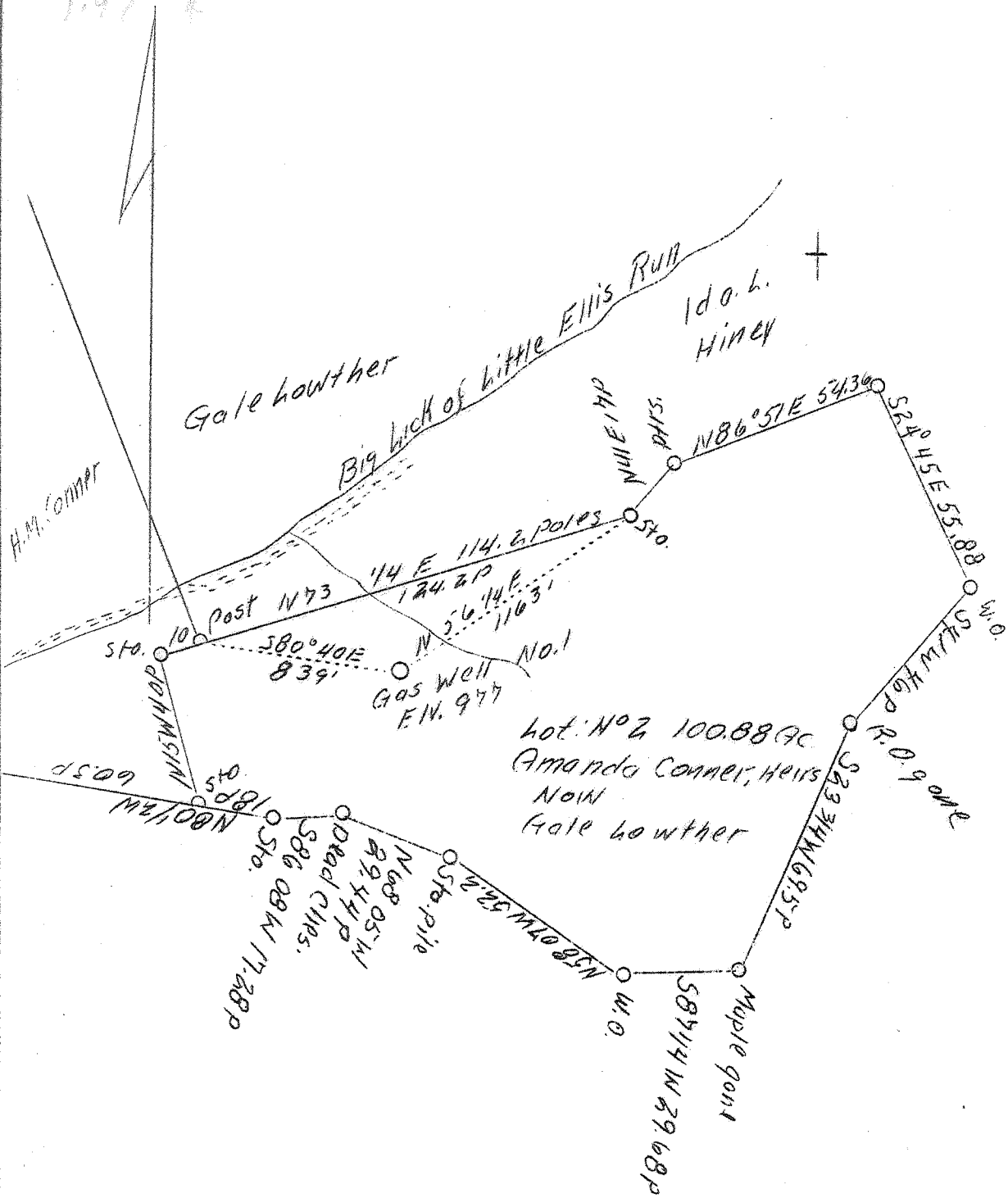


LATITUDE 39° 00'

LONGITUDE 80° 40'

2.21 J

1.97 K



Lot No. 2 100.88 ac
 Amanda Conner, Heirs
 Now
 Gale Lowther

S-2.27
 W-7.01

Coal not operated

ABD.

Company	J. M. Raad
Address	Salem, W. Va.
Farm	Gale Lowther
Tract	2
Acres	100.88
Well (Farm) No.	1
Elevation (SL)	977
Quadrangle	NW Burnsville
County	Gilmer
District	Glenville
Engineer	C. C. Fittro, C. E.
Eng. Reg. No.	818
File No.	XYZ
Drawing No.	121
Date	Aug. 11, 1939
Scale	40 poles - 1"

STATE OF WEST VIRGINIA
 DEPARTMENT OF MINES
 OIL & GAS DIVISION
 CHARLESTON

WELL LOCATION MAP

File No. Gil-129-A

x Denotes location of well on U. S. Topographic Maps, scale 1 to 62,500, latitude and longitude lines being represented by border lines as shown.

- Denotes one inch spaces on border line of original tracing.