

ABD. # 569

Company	Hope Constr. & Ref. Co.
Address	Clarksburg, W. Va.
Farm	Scott Mason
Acres	120
Well (Farm) No.	-
Serial No.	569-649-795-223-714-815-834
Elevation (S.P.)	1102-979-1106-854-853-883-884
Quadrangle	Holbrook S.C.
County	Gilmer
District	Troy
Engineer	J. R. Clark
Eng. Reg. No.	744
Date	April 4, 1938
Scale	1" = 400'

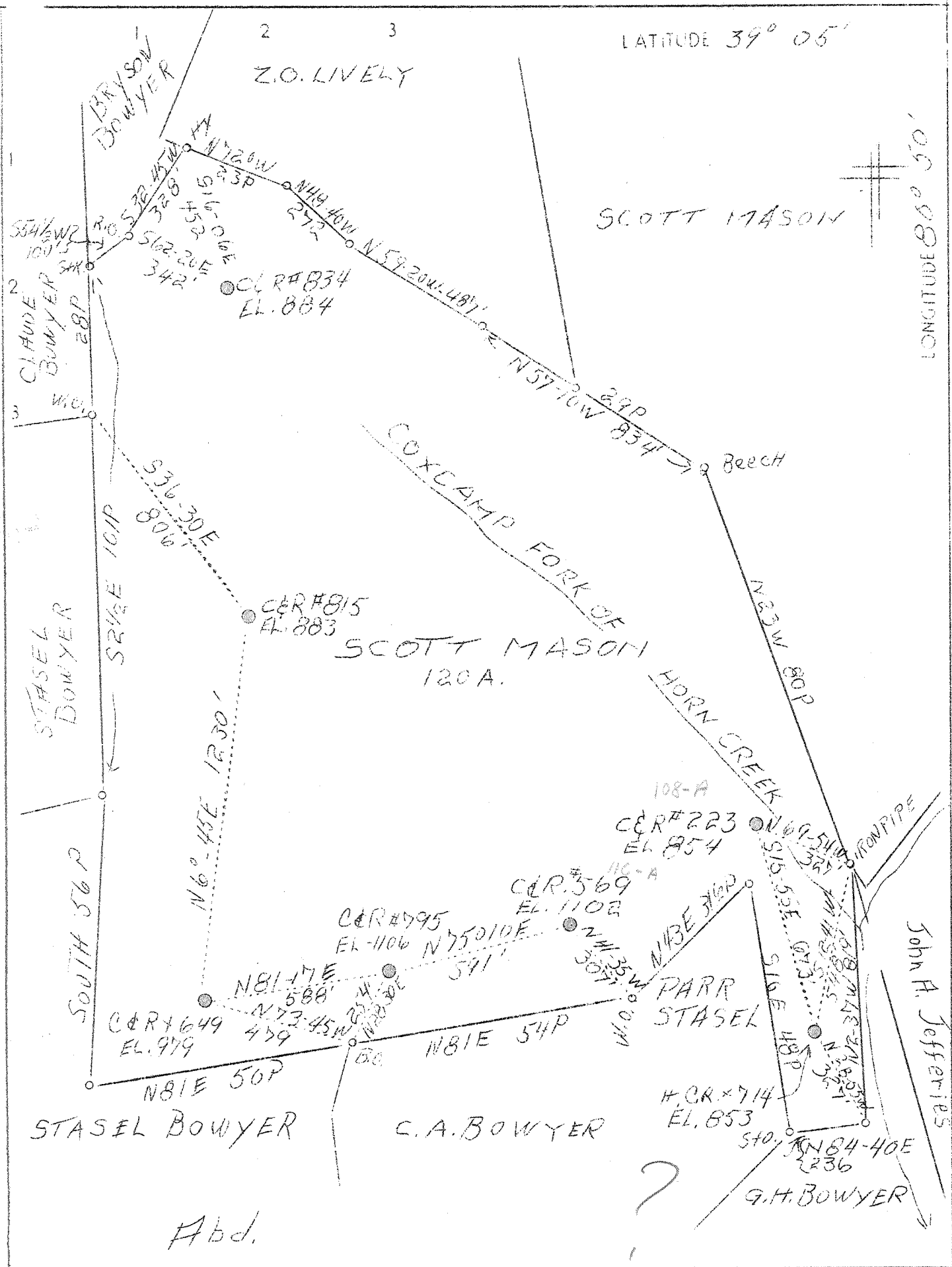
STATE OF WEST VIRGINIA  
 Department of Mines  
 OIL & GAS DIVISION  
 Charleston

WELL LOCATION MAP

File No. G11-116-A

X Denotes location of well on U. S. Topographic Maps, scale 1 to 62,500, latitude and longitude lines being represented by border lines as shown.

- Denotes one inch spaces on border line of original tracing.



Company	Hope Constr. & Ref. Co.
Address	Clarksburg, W.Va.
Farm	Scott Mason
Tract	Acres 120 Lease No. 569-649-795
Well (Farm) No.	Serial No. 223-714-815-834
Elevation (Spirit Level)	1102-979-1106-854-853-883-884
Quadrangle	Holbrook S.E.
County	Gilmer District Troy
Engineer	J.W. Clark
Engineer's Registration No.	744
File No.	Drawing No.
Date	Apr. 4, 1938 Scale 1"=400'

STATE OF WEST VIRGINIA  
 Department of Mines  
 OIL AND GAS DIVISION  
 CHARLESTON

WELL LOCATION MAP  
 File No. G11-168-A

Denotes location of well on United States Topographic Maps, scale 1 to 62,500, latitude and longitude lines being represented by border lines as shown.

Denotes one inch spaces on border line of original tracing.

Troy District, Gilmer County, W. Va.

By Hope Construction & Refining Co., Clarksburg, W. Va.

On 120 acres, on Horn Creek.

Elevation, 1102' L.

Drilling commenced April 2, 1920; completed, Aug. 22, 1920.

Shot Sept. 7, 1929, in Gantz? Sand.

10" casing, 435' (pulled); 8 $\frac{1}{2}$ " , 1045'; 6 $\frac{5}{8}$ " , 1979'; 2" tubing, 2415'.

Casing not cemented. Fresh water at 415'.

Coal was encountered at 240-243'.

Oil well. Abandonment reported to Dept. of Mines July 19, 1938.

Record to RCT from Mrs. Griffith August 12, 1938.

	Top.	Bottom.
Coal	240	- 243
(water at 415')		
Little Dunkard Sand	855	- 885
Big Dunkard Sand	1030	- 1065
Gas Sand	1150	- 1288
Gas Sand	1345	- 1405
Salt Sand	1435	- 1472
Second Salt Sand (gas, 1608-1630')	1590	- 1660
Third Salt Sand	1690	- 1750
Red rock	1800	- 1890
Little Lime	1900	- 1925
Pencil Cave	.....	- .....
Big Lime	1945	- 2000
Big Injun Sand	2000	- 2115
Squaw Sand	2220	- 2335
Gantz? Sand (oil, 2397-2403')	2388	- .....
Total depth		2415

WEST VIRGINIA DEPARTMENT OF MINES  
OIL AND GAS DIVISION

206

WELL RECORD

Permit No. ....

Oil or Gas Well Oil  
(Kind)

Company Hope Construction & Refining Company  
 Address Clarksburg, W. Va.  
 Farm Scott Mason Acres 120 589  
 Location (waters) Horn Creek  
 Well No. 569 Elev. 1102  
 District Troy County Gilmer  
 The surface of tract is owned in fee by.....  
 Address.....  
 Mineral rights are owned by.....  
 Address.....  
 Drilling commenced 4-9-1920  
 Drilling completed 8-22-1920  
 Date shot 9-7-1929 Depth of shot In Gantz  
 Open Flow /10ths Water in..... Inch  
 /10ths Merc. in..... Inch  
 Volume..... Cu. Ft.  
 Rock Pressure..... lbs..... hrs.  
 Oil..... bbls., 1st 24 hrs.  
 Fresh water 415 feet..... feet  
 Salt water..... feet..... feet

Casing and Tubing	Used in Drilling	Left in Well	Packers
Size			
16			Kind of Packer.....
13			
10	435	Pulled	Size of.....
8 1/2	1045	1045	
6 5/8	1979	1979	Depth set.....
5 3/16			
3			Perf. top.....
2	2415	2415	Perf. bottom.....
Liners Used.....			Perf. top.....
			Perf. bottom.....

CASING CEMENTED..... SIZE..... No. FT..... Date  
 Not cemented  
 COAL WAS ENCOUNTERED AT 240 FEET 36 INCHES  
 FEET..... INCHES..... FEET..... INCHES  
 FEET..... INCHES..... FEET..... INCHES

Formation	Color	Hard or Soft	Top	Bottom	Oil Gas or Water	Depth Found	Remarks
Coal			240	243	Water	415	
Little Dunkard sand			855	885			
Big Dunkard sand			1030	1065			
Gas sand			1150	1288			
Gas sand			1345	1405			
Salt sand			1435	1472			
Second salt sand			1590	1660	Gas	1608-1650	
Third salt sand			1690	1750			
Red Rock			1800	1890			
Little Lime			1900	1925			
Pencil Cave							
Big Lime			1945	2000			
Big Injun sand			2000	2115			
Squaw sand			2220	2335			
Gantz sand			2388		Oil	2397-2405	
Total Depth				2415			

