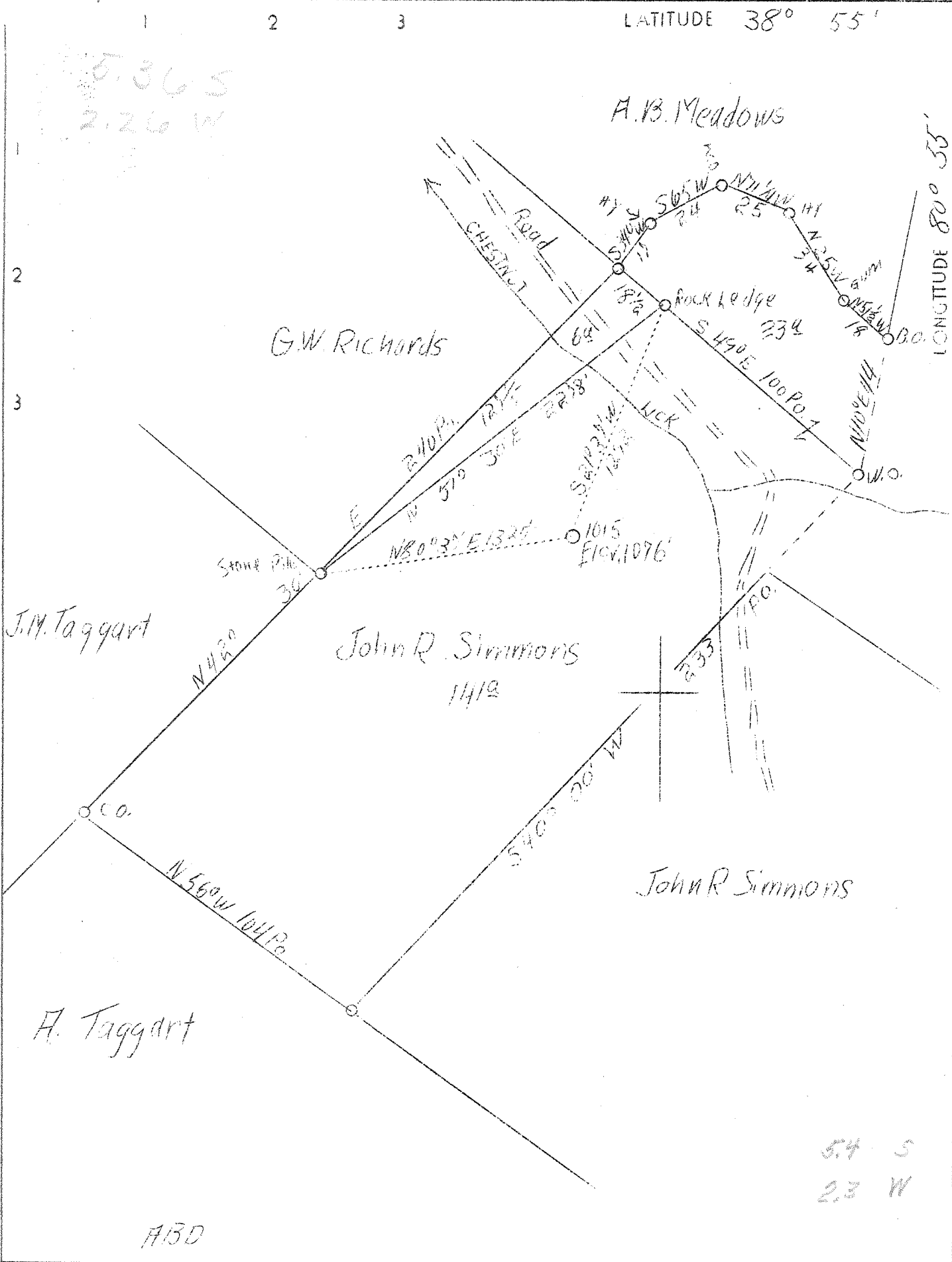


M

LATITUDE 38° 55'

LONGITUDE 80° 35'



5.365
2.26 W

5.4 S
2.3 W

ABD

Company Hope Constr. & Ref. Co.
 Address Clarksburg, W.Va.
 Farm John R. Simmons
 Tract 1 Acres 160 Lease No.
 Well (Farm) No. 1 Serial No. 1015
 Elevation (Spirit Level) 1076
 Quadrangle Glenville E.C.
 County Gilmer District Center
 Engineer Wm. Bowers
 Engineer's Registration No. 900
 File No. Drawing No.
 Date April 27, 1938 Scale 1"-40 Poles

STATE OF WEST VIRGINIA
 Department of Mines
 OIL AND GAS DIVISION
 CHARLESTON

WELL LOCATION MAP
 File No. Gil-110-7

Denotes location of well on United States Topographic Maps, scale 1 to 62,500, latitude and longitude lines being represented by border lines as shown.

Denotes one inch spaces on border line of original tracing.

Center District, Gilmer County, W. Va.
 By Hope Construction & Refining Co., Clarksburg, W. Va.
 On 160 acres; on Chestnut Lick.
 Elevation, 1076' L.
 Surface owned by John R. Simmons, Troy, W. Va.
 Drilling commenced 12-3-1925; completed, 1-6-1926.
 Shot 2-9-1926, in Maxton Sand.
 Fresh water at 233'.
 Salt water at 1706'.
 8 $\frac{1}{4}$ " casing, 333'; 6 $\frac{3}{8}$ "^o, 1160'; 5 $\frac{3}{8}$ "^o, 1834' (pulled); 2" tubing, 1741'.
 Casing not cemented. No coal was encountered.
 Oil well. Abandonment reported to Dept. of Mines April 27, 1938.
 Record to RCT from Mrs. Griffith May 27, 1938.

	Top.	Bottom.
Little Dunkard Sand	660	- 680
Big Dunkard Sand	77 $\frac{1}{2}$	- 865
Gas Sand	908	- 956
First Salt Sand	1112	- 1160
Second Salt Sand (show oil, 1546'; show gas, 1535')	1493	- 1608
Maxton Sand (water and oil, 1706')	1680	- 1726
Little Lime	1755	- 1780
Pencil Cave	1780	- 1798
Big Lime	1798	- 1865
Big Injun Sand (show gas, 1868')	1865	- 1962
Squaw Sand	2041	- 2044
Original total depth		2196
Previously filled and plugged to present total depth		1741

WEST VIRGINIA DEPARTMENT OF MINES
OIL AND GAS DIVISION

202

WELL RECORD

Permit No. 911-110-A

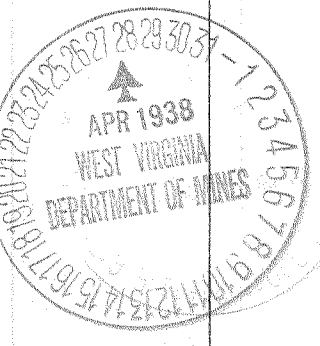
Oil or Gas Well Oil
(Kind)

Company Hope Construction & Refining Company
Address Clarksburg, W. Va.,
Farm John R. Simmons Acres 180
Location (waters) Chestnut Lick
Well No. 1015 Elev. 1076
District Center County Gilmer
The surface of tract is owned in fee by John R. Simmons
Address Troy, W. Va.,
Mineral rights are owned by _____
Address _____
Drilling commenced 12-3-1925
Drilling completed 1-6-1926
Date shot 2-9-1926 Depth of shot In Maxon
Open Flow /10ths Water in _____ Inch
/10ths Merc. in _____ Inch
Volume _____ Cu. Ft.
Rock Pressure _____ lbs. _____ hrs.
Oil _____ bbls., 1st 24 hrs.
Fresh water 255 feet _____ feet
Salt water 1706 feet _____ feet

Casing and Tubing	Used in Drilling	Left in Well	Packers
Size			
16			Kind of Packer
13			
10			Size of
8 1/4	333	333	
6 5/8	1160	1160	Depth set
5 3/16	1834	Pulled	
3			Perf. top
2	1741	1741	Perf. bottom
Liners Used			Perf. top
			Perf. bottom

CASING CEMENTED _____ SIZE _____ No. FT. _____ Date _____
Not cemented
COAL WAS ENCOUNTERED AT _____ FEET _____ INCHES
_____ FEET No coal INCHES _____ FEET _____ INCHES
_____ FEET _____ INCHES _____ FEET _____ INCHES

Formation	Color	Hard or Soft	Top	Bottom	Oil Gas or Water	Depth Found	Remarks
Little Dunkard sand			660	680			
Big Dunkard Sand			774	865			
Gas sand			908	956			
First salt sand			1112	1160			
Second salt sand			1495	1608	Show oil	1546	
Maxon Sand			1680	1726	Show Gas	1535	
Little Lime			1755	1780	Water & Oil	1706	
Concil Cave			1780	1798			
Big Lime			1798	1865			
Big Injun sand			1865	1962	Show gas	1868	
Quaw Sand			2041	2044			
Original total depth			2196				
Previously filled and plugged to present total depth						1741.	



MAY 27 1938

