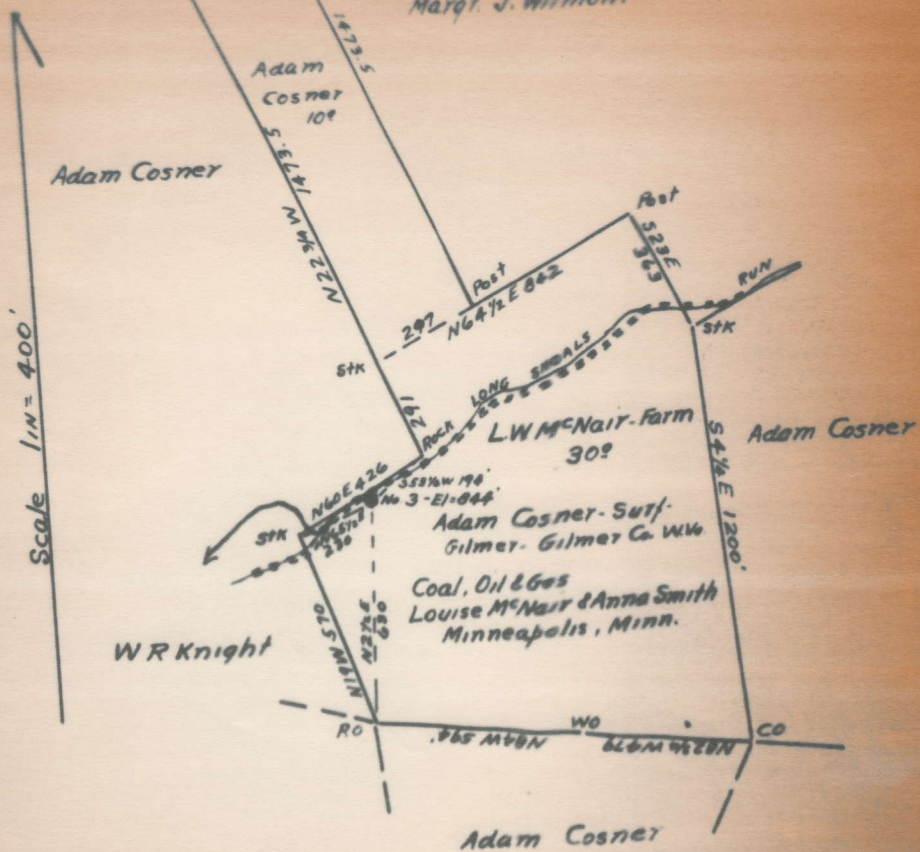


W.V. 1923

42

~~Gil 41-A~~

Marq. J. Wilmoth



ENGINEER'S CERTIFICATE.

I, the undersigned, hereby certify that this Map is correct and shows all the information to the best of my knowledge and belief, required by the oil and gas section of the Mining Laws of West Virginia.

Frank Todum
Engineer.

Acknowledged before me a Notary Public of Allegheny County, Pa., this 13th day of March, 1923

John F. Wiegman
Notary Public.

Glenville District, Gilmer County, and Salt Lick District, Braxton County, W. Va.

South Penn Oil Co., P. O. Drawer 1255, Pittsburgh, Pa.

On 1060 acres, surface owned by Adam Cosner, Gilmer, W. Va., and mineral rights by Louise McNair and Anna Smith, 550 Temple Court, Minneapolis, Minn.

Elevation, 844' L.

14' conductor; 10" casing, 149' 8"; 8 $\frac{1}{4}$ ", 825' 8"; 6-5/8", 1749' 6".

Coal was encountered at 430-434'.

Abandonment reported to Dept. of Mines March 13, 1933.

Well was shot Dec. 16, 1915, with 40 qts., in 30-Ft. Sand.

Well was shot May 21, 1920, with 60 qts., in 30-Ft. Sand.

Oil well.

	Top.	Bottom.
Conductor	0	14
Pittsburgh Coal	430	434
Little Dunkard Sand	635	650
Big Dunkard Sand	760	775
Gas Sand	890	880
1st Salt Sand	970	1000
2nd Salt Sand	1175	1420
3rd Salt Sand	1500	1556
Maxton Sand	1642	1676
Little Lime	1678	1686
Pencil Cave	1705	1718
Big Lime (gas, 1860')	1735	1895
Big Injun Sand	1895	1950
Berea Grit	2108	2115
50-Ft. Sand	2220	2330
30-Ft. Sand (oil, 2346')	2344	2358
Total depth		2369

42-A

SOUTH PENN OIL
 P. O. Drawer 1255,
 Pittsburgh, Pa.
 Well No. 5, - L. W. McNair Farm.

Oil 41-A

COMPLETION DATA SHEET
 No. 2
 FORMATION RECORD

Name	Color	Character	Oil, Gas or Water	Top	Bottom	Thickness	Total Depth	Remarks
Conductor					14			
Pittsburgh Coal				430	434			
Little Dunkard Sand				635	650			
Big Dunkard Sand				760	775			
Gas Sand				790	880			
1st Salt Sand				970	1000			
2nd Salt Sand				1175	1420			
3rd Salt Sand				1500	1556			
Maxon Sand				1642	1676			
Little Lime				1678	1686			
Pencil Cave				1705	1718			
Big Lime				1735	1895			
			Gas	1860				
Big Injun				1895	1950			
Berea Grit				2108	2118			
Fifty Foot Sand				2220	2330			
Thirty Foot Sand				2344	2358			
			Oil	2346				
Total Depth							2369	

shot
 Well was ~~drilled~~ drilled at 12-16-18; 40 qts. 30 ft. Sand well was shot at 6-21-20; 50 qts. 30 ft. Sand
 Salt
 Fresh water at _____ salt
 feet; fresh water at _____ feet.

WEST VIRGINIA DEPARTMENT OF MINES

OIL AND GAS DIVISION

PRELIMINARY DATA SHEET NO. 1

Oil-42A

File No. _____ Well No. 3

SOUTH PENN OIL Company, of P. O. Drawer 1255,

Pittsburgh, Pa., on the L. W. McNair Farm

containing 1060 acres. Location _____

Salt Lick District, in Braxton County, West Virginia
Glenville District, in Gilmer

The surface of the above tract is owned in fee by ADAM COOPER,
of Gilmer, Gilmer County, W. Va. address, and the mineral rights are owned by

Louise McNair, 550 Temple Court, Minneapolis, Minn.
Anna Smith

The oil and gas privileges are held under lease by the above named company, and this well is drilled under permit
No. _____ issued by the West Virginia Department of Mines, Oil and Gas Division

Elevation of surface at top of well, 644' Depth
Barometer

The number of feet of the different sized casings used in the well
14 feet

Depth	Size	Material	Weight	Notes
149'	8"	steel	10"	steel casing
825'	8"	steel	8-1/4"	steel casing
1749'	6"	steel	8-5/8"	steel casing

_____ galbur of _____ steel, and at _____
_____ galbur of _____ steel, and at _____
_____ to casing perforated at _____ feet to _____ feet
_____ to casing perforated at _____ feet to _____ feet

Coal was encountered at 620 feet; thickness 68 inches, and at _____
feet; thickness _____ inches; and at _____ feet; thickness _____ inches

Liners were used as follows: (Give details)

**AFFIDAVIT IN TRIPPLICATE TO TIME AND MANNER OF
PLUGGING AND FILLING WELL**

(REQUIRED BY SECTION 8, ARTICLE 4, CHAPTER 22 OF THE CODE)

**WEST VIRGINIA DEPARTMENT OF MINES
OIL AND GAS DIVISION**

42A

Minnesota Loan & Trust Co.,
Trustees, COAL OPERATOR OR OWNER
Louise McNair et al.,
Minneapolis, Minn.
ADDRESS

NAME OF WELL OPERATOR
SOUTH PENN OIL COMPANY,
P.O. Drawer 1255, Pittsburgh, Pa.
COMPLETE ADDRESS

August 30, 19 35.

COAL OPERATOR OR OWNER

WELL AND LOCATION

Salt Lick & Glenville District #
Braxton & Gilmer Counties

COAL OPERATOR OR OWNER

Well No. 5
L. W. McNair Farm

ADDRESS

AFFIDAVIT TO BE MADE IN TRIPPLICATE. ONE COPY TO BE MAILED BY REGISTERED MAIL TO THE DEPARTMENT. ONE COPY TO BE RETAINED BY THE WELL OPERATOR AND THE THIRD COPY (AND EXTRA COPIES IF NECESSARY) TO BE MAILED TO EACH COAL OPERATOR ABOVE NAMED AT THEIR RESPECTIVE ADDRESSES.

AFFIDAVIT

STATE OF WEST VIRGINIA,

County of Harrison } ss:

J. F. Black

being first duly sworn according to law depose and say that they are experienced in the work of plugging and filling oil and gas wells and were employed by South Penn Oil Company, well operator, and participated in the work of plugging and filling the above well, that said work was commenced on the 15th day of July, 19 35, and that the well was plugged and filled in the following manner:

Manner in which said well was plugged: Total depth 2369'. Filled with non-porous material to 2200', -20' above Fifty Foot Sand. Set wood plug 2200'-2197'. Set cement plug 2197'-2187', -sealing Fifty Foot Sand. Filled with non-porous material to 2088', -20' above Berea Grit. Set wood plug 2088'-2085'. Set cement plug 2085'-2075', -sealing Berea Grit. Filled with non-porous material to 1875', -20' above Big Injun Sand. Set wood plug 1875'-1872'. Set cement plug 1872'-1862', -sealing Big Injun Sand. Filled with non-porous material to 1774'. Pulled 6-5/8" casing. Filled with non-porous material to 1622', -20' above Maxon Sand. Set wood plug 1622'-1619'. Set cement plug 1619'-1609', -sealing Maxon Sand. (This plug 53' below Salt Lick in which coal was plugged) Sand. Filled with non-porous material to 950', -20' above Salt Sand. Set wood plug 950'-947'. Set cement plug 947'-937', sealing Salt Sand. Filled with non-porous material to 825'. Pulled 8-1/4" casing. Filled with non-porous material to 615', -20' above Little Dunkard Sand. Set wood plug 615'-612'. Set cement plug 612'-602', -sealing Little Dunkard Sand. Filled with non-porous material to 474', -40' below Pittsburgh Coal. 2" vent pipe 474' to surface. Vent pipe perforated 474'-464'. Set Morning Glory Packer 464', -30' below Pittsburgh Coal. Vent pipe cemented from 464' to 410', -20' above Pittsburgh Coal. Filled with non-porous material to 140'. Pulled 10" casing. Filled -Description of monument- with non-porous material to surface. Erect monument, -2" pipe 8' above ground; 2" Tee, -2" nipple, -2-2" Ells pointing downward. 2' cement cone around 2" vent pipe 2' above ground.

(THE ABOVE DESCRIPTIONS MUST BE IN DETAIL AND IN ACCORDANCE WITH THE PROVISIONS OF SECTION 10, ARTICLE 4, CHAPTER 22 OF THE CODE)

and that the work of plugging and filling said well was completed on the 15th day of August,

19 35.

And further deponents saith not.

J. F. Black

7/14/35
26 7/14-42-35