

LATITUDE

80° 52' 30"  
39° 00' 00"

80° 52' 30"

LONGITUDE



1.470  
0.870

7'5 OGIS topo location

7.5' loc \_\_\_\_\_ 15' loc \_\_\_\_\_  
(calc.) \_\_\_\_\_

Company \_\_\_\_\_

Farm \_\_\_\_\_

Quad Tanner 7'2

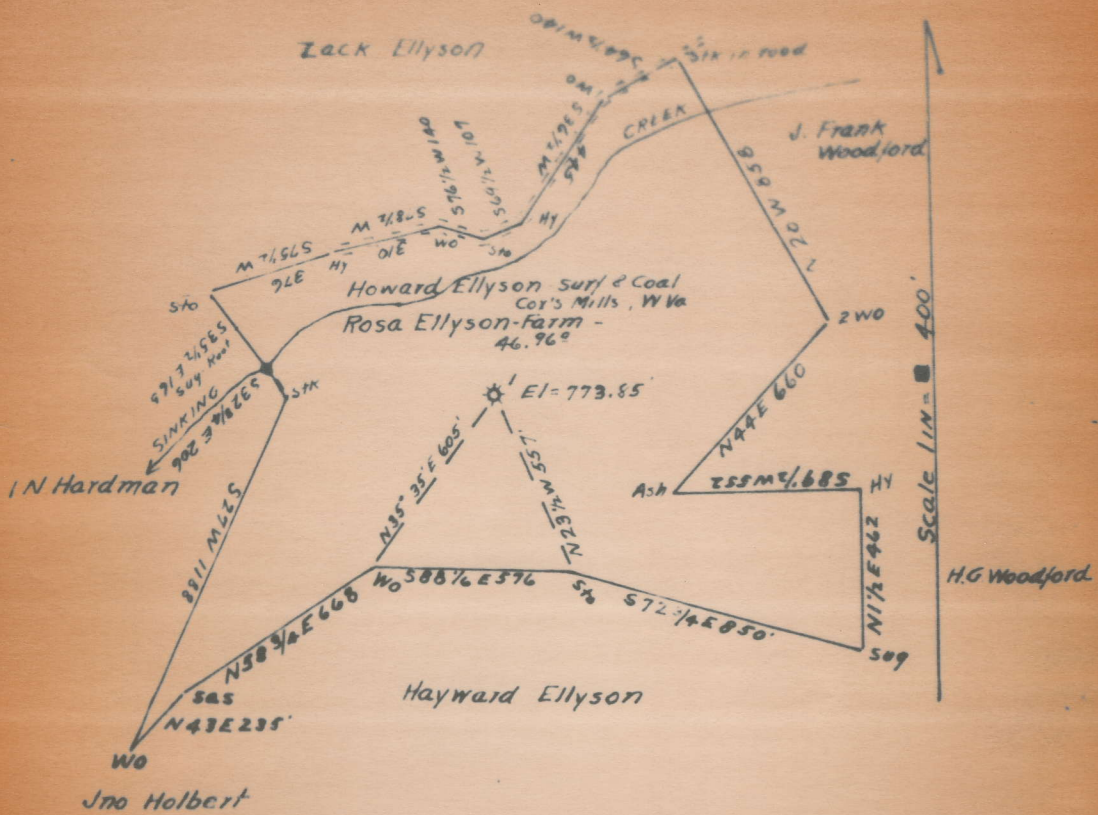
County Gilmer

District DeKalb

WELL LOCATION MAP

File No. 021-30038

Plat-38-A



**ENGINEER'S CERTIFICATE.**

I, the undersigned, hereby certify that this Map is correct and shows all the information to the best of my knowledge and belief, required by the oil and gas section of the Mining Laws of West Virginia.

*Frank Godwin*  
Engineer.

Acknowledged before me, a Notary Public of Allegheny County, Pennsylvania, this 12th day of October, 1932.

*John F. Wiegman*

JOHN F. WIEGMAN, NOTARY PUBLIC  
MY COMMISSION EXPIRES, MAR. 30, 1936

DeKalb District, Gilmer County, W. Va.

South Penn Oil Co., P. O. Drawer 1255, Pittsburgh, Pa.

On 47 acres, surface owned by Howard Ellyson, Coxs Mills, W. Va.,  
and mineral rights by Zack Ellyson, Coxs Mills, W. Va.

Elevation, 773.85' L.

16' conductor; 10" casing, 155'; 8 $\frac{1}{4}$ " casing, 652'; 6-5/8" casing, 1127';  
2" tubing, 1245'.

G. A. packer, 2 x 6-5/8, set at 1146'.

G. A. packer, 2 x 6-5/8, set at 1126'.

Abandonment reported to Dept. of Mines Oct. 12, 1932.

Gas well.

	Top.	Bottom.
Conductor	0 -	16
Red rock	16 -	25
Lime	25 -	75
Red rock	75 -	105
Lime (10" casing, 155')	105 -	160
Red rock	160 -	235
Slate	235 -	265
Red rock	265 -	295
Slate	295 -	340
Red rock	340 -	365
Lime	365 -	380
Slate	380 -	395
Lime and shells	395 -	405
Slate	405 -	450
Lime and sand	450 -	500
Slate	500 -	535
Little Dunkard Sand	535 -	560
Slate	560 -	575
Lime	575 -	610
Slate	610 -	620
Big Dunkard Sand (8 $\frac{1}{4}$ " casing, 645')	620 -	720
Slate and shells	720 -	805
Gas Sand (show of gas, 875')	805 -	890
Slate	890 -	905
Lime and shells	905 -	930
Slate	930 -	960
Sand	960 -	995
Black slate	995 -	1015
Lime and slate	1015 -	1106
1st Salt Sand (6-5/8" casing, 1113')	1106 -	1174
Slate	1174 -	1184
Sand (show of gas, 1190')	1184 -	1207
Black slate	1207 -	1219
2nd Salt Sand (gas, 1240-1244')	1219	
Total depth		1245

SOUTH PENN OIL  
P. O. Drawer 1256,  
Pittsburgh, Pa.

Company  
Address

COMPLETION DATA SHEET  
No. 2  
FORMATION RECORD

Well No. 1, - Rosa Ellyson Farm.

Oil-38-A

Name	Color	Character	Oil, Gas or Water	Top	Bottom	Thickness	Total Depth	Remarks
Conductor					16			
Red Rock				16	25			
Lime				25	75			
Red Rock				75	105			
Lime				105	160			
10" Casing					155			
Red Rock				160	235			
Slate				235	265			
Red Rock				265	295			
Slate				295	340			
Red Rock				340	365			
Lime				365	380			
Slate				380	395			
Lime & Shells				395	405			
Slate				405	450			
Lime & Sand				450	500			
Slate				500	535			
Little Dunkard				535	560			
Slate				560	575			
Lime				575	610			
Slate				610	620			
Big Dunkard				620	720			
8-1/4" Casing					645			
Slate & Shells				720	805			
Gas Sand				805	890			
			Show gas		875			
Slate				890	905			
Lime & Shells				905	930			
Slate				930	960			
Sand				960	995			
Black Slate				995	1015			
Lime & Slate				1015	1106			
1st Salt Sand				1106	1174			
6-5/8" Casing					1113			
Slate				1174	1184			
Sand				1184	1207			
			Show gas		1190			
Black Slate				1207	1219			
2nd Salt Sand				1219	1244			
			Gas		1240			
							1245	
Total Depth								

shot  
Well was not shot at \_\_\_\_\_ feet; well was shot at \_\_\_\_\_ feet.

Salt  
Fresh water at \_\_\_\_\_ feet; salt  
fresh water at \_\_\_\_\_ feet.

producing  
Well was \_\_\_\_\_ hole

WEST VIRGINIA DEPARTMENT OF MINES

Oil and Gas Section

*lit* 38-A

PRELIMINARY DATA SHEET NO. 1

File No.

Well No. 1

SOUTH PENN OIL

Company, of P. O. Drawer 1255,

Pittsburgh, Pa.

on the Rosa Ellyson

Farm

containing 47 acres. Location

DeKalb

District, in Gilmer

County, West Virginia.

The surface of the above tract is owned in fee by Howard Ellyson

of Cox's Mills, W. Va.

address, and the mineral rights are owned by

Zack Ellyson

of Cox's Mills, W. Va.

The oil and gas privileges are held under lease by the above named company, and this well is drilled under permit No. \_\_\_\_\_ issued by the West Virginia Department of Mines, Oil and Gas Section.

19

Elevation of surface at top of well, 773.85'

Spirit  
Barometric.

The number of feet of the different sized casings used in the well.

Length (feet)	Casing Size	Weight (lbs)	Notes
16	10"	1245	Wood conductor
155	8 1/4"		
652	6-5/8"		
1127	2" X 6-5/8"		

G. A. packer of 2" X 6-5/8" size, set at 1146'

G. A. packer of 2" X 6-5/8" size, set at 1126'

in casing perforated at \_\_\_\_\_ feet to \_\_\_\_\_ feet.

in casing perforated at \_\_\_\_\_ feet to \_\_\_\_\_ feet.

Coal was encountered at \_\_\_\_\_ feet; thickness \_\_\_\_\_ inches, and at \_\_\_\_\_ feet; thickness \_\_\_\_\_ inches; and at \_\_\_\_\_ feet; thickness \_\_\_\_\_ inches.

Liners were used as follows: (Give details)

October 12, 1932.

AFFIDAVIT IN TRIPLICATE TO TIME AND MANNER OF  
PLUGGING AND FILLING WELL

(REQUIRED BY SECTION 9, ARTICLE 4, CHAPTER 22 OF THE CODE)

WEST VIRGINIA DEPARTMENT OF MINES  
OIL AND GAS DIVISION

(NO COAL)

SOUTH PENN OIL COMPANY,

COAL OPERATOR OR OWNER

NAME OF WELL OPERATOR

P.O. Drawer 1255, Pittsburgh, Pa.

ADDRESS

COMPLETE ADDRESS

December 8, 19 32

COAL OPERATOR OR OWNER

WELL AND LOCATION

DeKalb District

ADDRESS

Gilmer County

COAL OPERATOR OR OWNER

Well No. 1

ADDRESS

Rosa Ellys on Farm

AFFIDAVIT TO BE MADE IN TRIPLICATE, ONE COPY TO BE MAILED BY REGISTERED MAIL TO THE DEPARTMENT, ONE COPY TO BE RETAINED BY THE WELL OPERATOR AND THE THIRD COPY (AND EXTRA COPIES IF REQUIRED) TO BE MAILED TO EACH COAL OPERATOR ABOVE NAMED AT THEIR RESPECTIVE ADDRESSES.

AFFIDAVIT

STATE OF WEST VIRGINIA,

COUNTY OF Roane

SS:

*Gil-38-A*

W. K. McCray

NOTARY

being first duly sworn according to law depose and say that they are experienced in the work of plugging

and filling oil and gas wells and were employed by South Penn Oil Company, well operator, and participated in the work of plugging and filling the above well, that said work was commenced on the

1st day of November, 19 32, and that the well was plugged and filled in the following manner:

Manner in which sand was plugged:

Total depth 1245 ft.. Set cement plug from 1245 to 1240 ft. Filled with non-porous material to 1130 ft. Pulled 6-5/8" casing. Filled with non-porous material to 1086 ft. Set 8-1/4" wood plug from 1086 to 1083 ft. Set cement plug from 1083 to 1073 ft. Filled with non-porous material to 750 ft. Set 8-1/4" wood plug from 750 to 747 ft. Set cement plug from 747 to 737 ft. Filled with non-porous material to 660 ft. Pulled 8-1/4" casing. Filled up with ~~non-porous material~~ <sup>plugged</sup> 78 ft. Set 10" wood plug from 78 to 75 ft. Set cement plug from 75 to 65 ft. Filled to surface with non-porous material. Anchored in hole a piece of 8-1/4" casing 22 ft. long in hole 18 ft. and extends above surface 4 ft. Filled inside and one foot of concrete placed in top of marker in which was anchored a brass plate giving name of Company, Farm Name, Well No. and date abandoned.

*OK  
12/13*

Description of monument:

(THE ABOVE DESCRIPTIONS MUST BE IN DETAIL AND IN ACCORDANCE WITH THE PROVISIONS OF SECTION 10, ARTICLE 4, CHAPTER 22 OF THE CODE)

and that the work of plugging and filling said well was completed on the 14th day of November,

19 32.

And further deponents saith not.