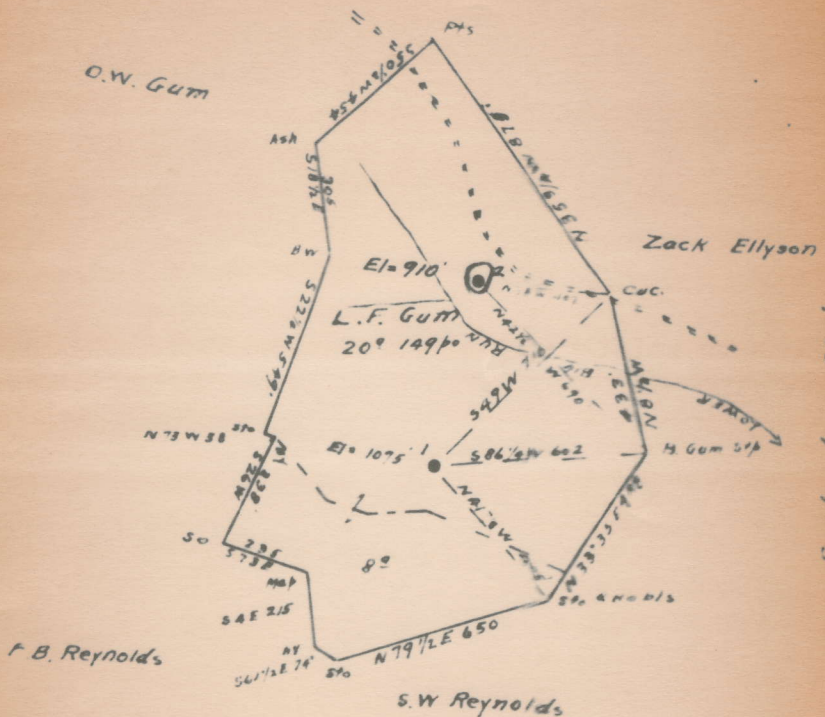


NOT LOCATED

91-22-A



ENGINEER'S CERTIFICATE

I, the undersigned, hereby certify that this map is true and correct, and shows all the information to the best of my knowledge and belief as required by the oil and gas section of the mining laws of West Virginia.

Frank Padgett
Engineer

Acknowledged before me a Notary Public this 18th day of July, 1931.
My commission expires March 30th, 1935.

John F. Newman

DeKalb District, Gilmer County, W. Va.
 South Penn Oil Co., P. O. Drawer 1255, Pittsburgh, Pa.
 On 20 acres, surface owned by Zack Ellyson, R. F. D. No. 2,
 Cox's Mills, W. Va., and mineral rights by L. C. Gum,
 Weston, W. Va.

Elevation, 910' L.

13' conductor; 10" casing, 157'; 8 $\frac{1}{4}$ ", 837'; 6-5/8", 1689'.

No coal was encountered.

Abandonment reported to Dept. of Mines July 20, 1931.

Well was shot in Big Injun Sand.

| | Top. | Bottom. |
|---|------|---------|
| Conductor | 0 | 13 |
| Sandrock | 13 | 50 |
| Slate | 50 | 70 |
| Red rock | 70 | 85 |
| Slate | 85 | 160 |
| Red rock (10" casing, 157') | 160 | 170 |
| Slate | 170 | 215 |
| Red rock | 215 | 235 |
| Slate and lime | 235 | 305 |
| Red rock | 305 | 365 |
| Slate and shells | 365 | 385 |
| Red rock | 385 | 450 |
| White slate | 450 | 500 |
| Red rock | 500 | 505 |
| White slate | 505 | 560 |
| Red rock | 560 | 570 |
| Slate | 570 | 575 |
| Lime and shells | 575 | 590 |
| Slate | 590 | 600 |
| Black slate | 600 | 604 |
| Slate | 604 | 615 |
| Black slate | 615 | 618 |
| Slate and shells | 618 | 625 |
| Hard lime | 625 | 645 |
| Black slate | 645 | 670 |
| Sandy lime | 670 | 700 |
| Slate | 700 | 704 |
| Little Dunkard Sand | 704 | 775 |
| Slate | 775 | 780 |
| Lime | 780 | 795 |
| Sand | 795 | 810 |
| Slate | 810 | 828 |
| Big Dunkard Sand (8 $\frac{1}{4}$ " casing, 837') | 828 | 852 |
| Slate | 852 | 857 |
| Sand | 857 | 890 |
| Slate | 890 | 900 |
| Sand and lime | 900 | 932 |
| Slate | 932 | 937 |
| 1st Gas Sand | 937 | 1069 |
| Black slate | 1069 | 1081 |
| Black lime | 1081 | 1110 |
| Slate | 1110 | 1150 |
| 2nd Gas Sand | 1150 | 1200 |
| Black slate | 1200 | 1215 |

(OVER)

SOUTH PENN. OIL COMPANY
 P. O. Order 1080
 Pittsburgh, Pa.

Company
 Address

COMPLETION DATA SHEET
 NO. 2
 FORMATION RECORD

kil-20-A

| Name | Color | Character | Oil, Gas or Water | Top | Bottom | Thickness | Total Depth | Remarks |
|---------------|-------|-----------|-------------------|------|--------|-----------|-------------|---------|
| Conductor | | | | | 13 | | | |
| Sand Rock | | | | 13 | 50 | | | |
| Slate | | | | 50 | 70 | | | |
| Red Rock | | | | 70 | 85 | | | |
| Slate | | | | 85 | 160 | | | |
| Red Rock | | | | 160 | 170 | | | |
| 10" casing | | | | | 157 | | | |
| Slate | | | | 170 | 215 | | | |
| Red Rock | | | | 215 | 235 | | | |
| Slate & Lime | | | | 235 | 305 | | | |
| Red Rock | | | | 305 | 365 | | | |
| Slate & Shell | | | | 365 | 385 | | | |
| Red Rock | | | | 385 | 450 | | | |
| White Slate | | | | 450 | 500 | | | |
| Red Rock | | | | 500 | 505 | | | |
| White Slate | | | | 505 | 560 | | | |
| Red Rock | | | | 560 | 570 | | | |
| Slate | | | | 570 | 575 | | | |
| Lime & Shell | | | | 575 | 590 | | | |
| Slate | | | | 590 | 600 | | | |
| Black Slate | | | | 600 | 604 | | | |
| Slate | | | | 604 | 615 | | | |
| Black Slate | | | | 615 | 618 | | | |
| Slate & Shell | | | | 618 | 625 | | | |
| Hard Lime | | | | 625 | 645 | | | |
| Black Slate | | | | 645 | 670 | | | |
| Sandy Lime | | | | 670 | 700 | | | |
| Slate | | | | 700 | 704 | | | |
| Little Sandst | | | | 704 | 775 | | | |
| Slate | | | | 775 | 780 | | | |
| Lime | | | | 780 | 795 | | | |
| Sand | | | | 795 | 810 | | | |
| Slate | | | | 810 | 828 | | | |
| Big Dusters | | | | 828 | 852 | | | |
| 10" casing | | | | | 837 | | | |
| Slate | | | | 852 | 857 | | | |
| Sand | | | | 857 | 890 | | | |
| Slate | | | | 890 | 900 | | | |
| Sand & Lime | | | | 900 | 932 | | | |
| Slate | | | | 932 | 937 | | | |
| 1st. Gas sand | | | | 937 | 1069 | | | |
| Black Slate | | | | 1069 | 1081 | | | |
| Black Lime | | | | 1081 | 1110 | | | |
| Slate | | | | 1110 | 1150 | | | |
| 2nd. Gas sand | | | | 1150 | 1200 | | | |
| Black Slate | | | | 1200 | 1215 | | | |

"CONTINUED ON NEXT PAGE"

Well was shot at _____ feet, well was shot at _____ feet.
 salt
 Fresh water at _____ feet, fresh water at _____ feet.
 Well was _____ hole.

COMPLETION DATA SHEET

NO. 2

FORMATION RECORD

Company

Address

Oil 22-A

| Name | Color | Character | Oil, Gas or Water | Top | Bottom | Thickness | Total Depth | Remarks |
|----------------|-------|-----------|---------------------|------|--------|-----------|-------------|---------|
| Lime | | | | 1215 | 1250 | | | |
| Slate | | | | 1250 | 1310 | | | |
| 1st. Salt Sand | | | | 1310 | 1420 | | | |
| Slate | | | | 1420 | 1430 | | | |
| Black Lime | | | | 1430 | 1450 | | | |
| Slate | | | | 1450 | 1468 | | | |
| Lime & Shells | | | | 1468 | 1475 | | | |
| Black Slate | | | | 1475 | 1490 | | | |
| Lime & Shells | | | | 1490 | 1500 | | | |
| Red Rock | | | | 1500 | 1530 | | | |
| White Slate | | | | 1530 | 1535 | | | |
| Lime & Shells | | | | 1535 | 1540 | | | |
| Red Rock | | | | 1540 | 1580 | | | |
| Lime & Shells | | | | 1580 | 1586 | | | |
| Slate | | | | 1586 | 1622 | | | |
| Little Lime | | | | 1622 | 1632 | | | |
| Pencil Cave | | | | 1632 | 1637 | | | |
| Hard Lime | | | | 1637 | 1650 | | | |
| Slate | | | | 1650 | 1653 | | | |
| Lime | | | | 1653 | 1658 | | | |
| Slate | | | | 1658 | 1663 | | | |
| Sand & Lime | | | | 1663 | 1667 | | | |
| Big Lime | | | | 1667 | 1737 | | | |
| 6 5/8" Casing | | | | | 1673 | | | |
| | | | Gas show | 1712 | 1737 | | | |
| Big Injun | | | | 1737 | 1820 | | | |
| | | | Oil and show of gas | 1788 | 1793 | | | |
| Slate | | | | 1820 | 1824 | | | |
| Total Depth | | | | | | | 1824 | |

Well was ~~shot~~ shot at Big Injun Sand feet; well was shot at _____ feet.

Salt Fresh water at _____ feet; salt fresh water at _____ feet.

Well was _____ producing hole.

WEST VIRGINIA DEPARTMENT OF MINES

Oil and Gas Section

ht-22-A

PRELIMINARY DATA SHEET NO. 1

File No.

Well No. 2

South Penn Oil

Company, of P. W. Praver 1805, Pittsburgh, Pa.

on the L. C. GUM

Farm

containing

20

acres. Location

Jekalb

District, in

Gilmer

County, West Virginia

The surface of the above tract is owned in fee by Quok Ellyson

of R. F. D. #2, Foxs Mills, W. Va.

address, and the mineral rights are owned by

L. C. GUM

of Weston, W. Va.

The oil and gas privileges are held under lease by the above named company, and this well is drilled under permit No. _____ issued by the West Virginia Department of Mines, Oil and Gas Section.

19

Elevation of surface at top of well.

910'

Spent
Barometer

The number of feet of the different sized casings used in the well.

| | 13 | | feet | | size | Wood conductor |
|--|------|------|-------------------------|-----------|--------------|----------------|
| | 157 | feet | 10" | size, cog | feet | size cog |
| | 637 | feet | 9 1/2" | size, cog | feet | size cog |
| | 1609 | feet | 6 5/8" | size, cog | feet | size cog |
| | | | packer of | | size, set at | |
| | | | packer of | | size, set at | |
| | | | in casing perforated at | | feet to | feet |
| | | | in casing perforated at | | feet to | feet |

Coal was encountered at 19075 feet, thickness _____ inches, and at _____

feet, thickness _____ inches, and at _____ feet, thickness _____ inches

Liners were used as follows: (Give details)

July 30, 1931

Date

AFFIDAVIT IN TRIPLICATE TO TIME AND MANNER OF
PLUGGING AND FILLING WELL

REQUIRED BY SECTION 8, CHAPTER 22, ACTS 1922

WEST VIRGINIA DEPARTMENT OF MINES

COAL AND GAS SECTION

WELL RECORD FOR THIS WELL

SHOWED NO COAL

SOUTH PENN OIL COMPANY

NAME OF WELL OPERATOR

P. O. Drawer 1255, Pittsburgh, Pa.

COMPLETE ADDRESS

August 21, 19 31

WELL AND LOCATION

Dekalb District

Gilmer County

Well No. 2

L. F. Gum Farm

AFFIDAVIT TO BE MADE IN TRIPLICATE: ONE COPY TO BE MAILED BY REGISTERED MAIL TO THE DEPARTMENT, ONE COPY TO BE RETAINED BY THE WELL OPERATOR AND THE THIRD COPY (AND EXTRA COPIES IF REQUIRED) TO BE MAILED TO EACH COAL OPERATOR ABOVE NAMED AT THEIR RESPECTIVE ADDRESSES.

AFFIDAVIT

STATE OF WEST VIRGINIA,

COUNTY OF Roane

BE:

John Starkey

being first duly sworn according to law depose and say that they are experienced in the work of plugging and filling oil and gas wells and were employed by SOUTH PENN OIL COMPANY, well operator, and participated in the work of plugging and filling the above well, that said work was commenced on the 23rd day of July, 19 31, and that the well was plugged and filled in the following manner:

Manner in which sand was plugged: Total depth of well 1797'; anchored 6 5/8" x 3' Common Wood Dry Hole plug at 1777' on 17' 2" pipe; filled with non-porous sediment to 1736'; drove 6 5/8" x 3' Common Wood Dry Hole Plug to 1733'; filled with cement to 1710'; then filled with non-porous substance to 1689'; reduced hole from 6 5/8" to 1"; and showed no gas; pulled 6 5/8" casing; drove 8 1/2" x 3' Common Wood Dry Hole Plug to 915'; filled with non-porous sediment to 850'; pulled 8 1/2" casing; drove 10" x 3' Common Wood Dry Hole Plug to 421'; filled up with non-porous sediment to within 15' of top.

Manner in which coal was plugged:

Description of monument: Placed in piece of 8 1/2" casing 20' long for marker; filled marker with rock to within one foot of top and put one foot of cement in top.

(THE ABOVE DESCRIPTIONS MUST BE IN DETAIL, AND IN ACCORDANCE WITH THE PROVISIONS OF SECTION 10, CH. 22, AND 22B ACT OF 1922.)
and that the work of plugging and filling said well was completed on the 28th day of July

19 31

And further deponents saith nemo.

John Starkey

970
11/11/31