

LATITUDE 39° 00' 00"



0.332
2.00w

LONGITUDE 80° 52' 30"

T'S OGIS topo location

7.5' loc _____

15' loc _____
(calc.) _____

Company _____

Farm _____

Quad Tanner 7'12

County Gilmer

District Dekalb

WELL LOCATION MAP

File No. 021 - 30016

STATE OF WEST VIRGINIA, DEPARTMENT OF LAND AND MINES, STATE OFFICE, WEST VIRGINIA.

MINER'S CERTIFICATE

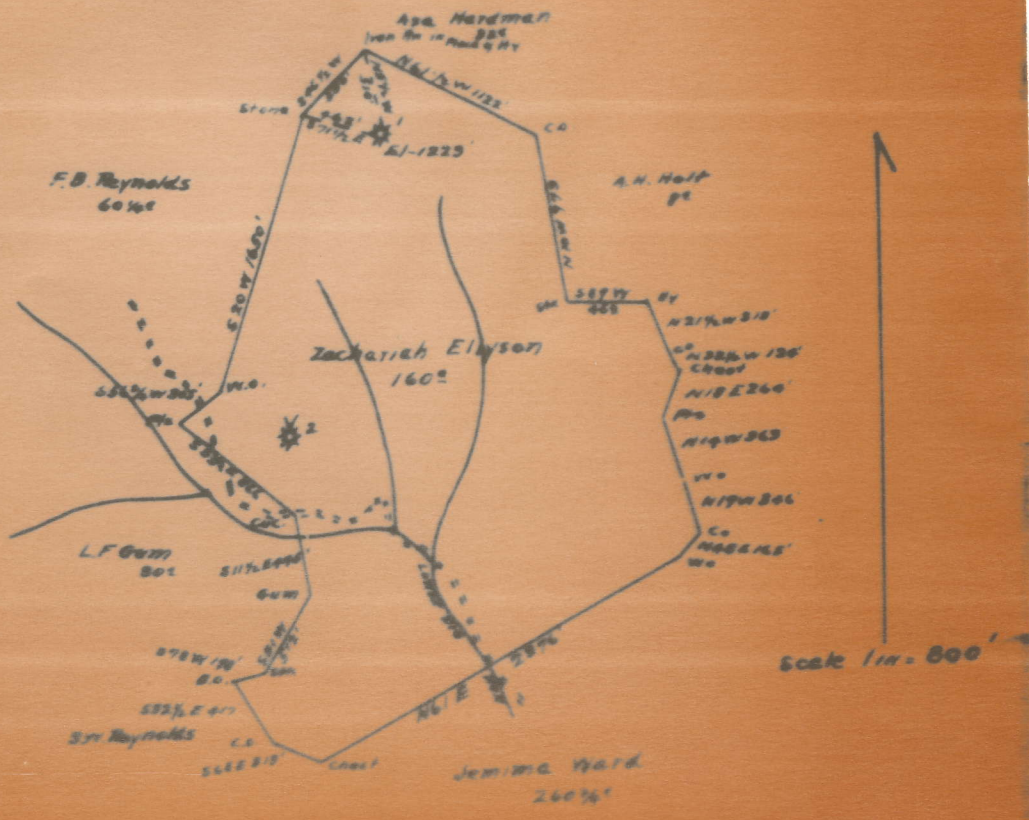
I, the undersigned, hereby certify that this map is correct and shows all the information to the best of my knowledge and belief as required by the oil and gas section of the Mining laws of West Virginia.

Lucas Johnson
Miner

Acknowledged before me a Notary Public this 18th day of February, 1931.
My commission expires on the 30th day of March, 1931.

John F. Wiggan
Notary Public

Lot-16-A



M

16-A

DeKalb District, Gilmer County, W. Va.
 South Penn Oil Co., P. O. Drawer 1255, Pittsburgh, Pa.
 On 160 acres, surface and mineral rights owned by Zack Ellyson,
 R. F. D. No. 2, Coxs Mills, W. Va.
 Elevation, 1223' L.
 15' conductor; 10" casing, 230'; 8 1/4", 971' 10"; 6-5/8", 1858' 3".
 Packer, 2 x 6-5/8, set at 1920'.
 No coal was encountered.
 Abandonment reported to Dept. of Mines Feb. 27, 1931.
 Well was shot in Big Injun Sand.
 Salt water at 1270-1280'.

| | Top. | Bottom. |
|-----------------------------|------|---------|
| Conductor | 0 | 15 |
| Red rock | 0 | 20 |
| Sand | 20 | 30 |
| Red rock | 30 | 67 |
| Sand | 67 | 80 |
| Slate | 80 | 90 |
| Sand | 90 | 100 |
| Lime | 100 | 125 |
| Slate | 125 | 130 |
| White slate | 130 | 135 |
| Sand | 135 | 160 |
| Slate | 160 | 163 |
| Slate | 163 | 200 |
| Red rock (10" casing, 230') | 200 | 230 |
| Slate | 230 | 246 |
| Red rock | 246 | 256 |
| Slate | 256 | 280 |
| Red rock | 280 | 289 |
| Slate | 289 | 319 |
| Red rock | 319 | 325 |
| Slate | 325 | 330 |
| Red rock | 330 | 355 |
| Lime and slate | 355 | 375 |
| Red rock | 375 | 381 |
| Slate and shells | 381 | 387 |
| Red rock | 387 | 392 |
| Slate | 392 | 460 |
| Red rock | 460 | 470 |
| Slate | 470 | 491 |
| Sand | 491 | 500 |
| Lime and slate | 500 | 510 |
| Slate and shells | 510 | 550 |
| Red rock | 550 | 590 |
| Sand | 590 | 605 |
| Red rock | 605 | 625 |
| Slate | 625 | 665 |
| Red rock | 665 | 670 |
| Sand | 670 | 700 |
| Slate | 700 | 720 |
| Lime and shells | 720 | 740 |
| Red rock | 740 | 800 |
| Slate | 800 | 805 |
| Sand | 805 | 825 |
| Slate | 825 | 837 |
| Slate | 837 | 843 |

(OVER)

ZACK ELLYSON NO. 1 WELL (Continued).

| | Top. | Bottom. |
|--|------|---------|
| Slate | 843 | 850 |
| Sand | 850 | 860 |
| Slate | 860 | 868 |
| Lime shells | 868 | 880 |
| White slate | 880 | 905 |
| Little Dunkard Sand. | 905 | 930 |
| Slate | 930 | 960 |
| Big Dunkard Sand (8 1/4" casing, 970') | 960 | 1030 |
| Slate | 1030 | 1075 |
| Sand | 1075 | 1090 |
| Slate | 1090 | 1100 |
| Sand | 1100 | 1130 |
| Slate | 1130 | 1200 |
| 1st Salt Sand (water, 1270-1280') | 1200 | 1320 |
| Slate | 1320 | 1370 |
| Sand | 1370 | 1375 |
| Black slate | 1375 | 1440 |
| 2nd Salt Sand | 1440 | 1475 |
| Lime and shells | 1475 | 1535 |
| Sand | 1535 | 1620 |
| Slate | 1620 | 1640 |
| Sandy lime | 1640 | 1652 |
| Slate | 1652 | 1746 |
| Maxton Sand | 1746 | 1768 |
| Red rock | 1768 | 1775 |
| Slate | 1775 | 1795 |
| Red rock | 1795 | 1800 |
| Slate | 1800 | 1811 |
| Little Lime | 1811 | 1828 |
| Pencil Cave | 1828 | 1846 |
| Big Lime (6-5/8" casing, 1851') | 1846 | 1875 |
| Sand | 1875 | 1885 |
| Slate | 1885 | 1890 |
| Lime | 1890 | 1946 |
| Big Injun Sand (gas, 1947-1954') | 1946 | 2038 |
| Slate | 2038 | 2045 |
| Lime and shells | 2045 | 2060 |
| Black slate | 2060 | 2097 |
| Lime and shells | 2097 | 2103 |
| Slate | 2103 | 2180 |
| Sand and lime | 2180 | 2240 |
| Slate and shells | 2240 | 2330 |
| Lime | 2330 | 2356 |
| Slate, to bottom | 2356 | 2401 |

SOUTH FRED OIL COMPANY
 P. O. Drawer 1230
 Pittsburgh, Pa.

COMPLETION DATA SHEET
 NO. 7
 FORMATION RECORD

Oil 16

| Name | Color | Character | Oil, Gas or Water | Top | Bottom | Thickness | Total Depth | Remarks |
|----------------|-------|-----------|----------------------|-----|--------|-----------|----------------|---------|
| Conductor | | | | | | | 15 | |
| Red Rock | | | | 1 | | | 20 | |
| Sand | | | | 20 | | | 30 | |
| Red Rock | | | | 30 | | | 67 | |
| Sand | | | | 67 | | | 80 | |
| Slate | | | | 80 | | | 90 | |
| Sand | | | | 90 | | | 100 | |
| Lime | | | | 100 | | | 125 | |
| Slate | | | | 125 | | | 130 | |
| White Slate | | | | 130 | | | 135 | |
| Sand | | | | 135 | | | 160 | |
| Slate | | | | 160 | | | 163 | |
| Slate | | | | 163 | | | 200 | |
| Red Rock | | | | 200 | | | 230 | |
| 10" casing | | | | | | | 230 | |
| Slate | | | | 230 | | | 246 | |
| Red Rock | | | | 246 | | | 256 | |
| Slate | | | | 256 | | | 280 | |
| Red Rock | | | | 280 | | | 289 | |
| Slate | | | | 289 | | | 319 | |
| Red Rock | | | | 319 | | | 325 | |
| Slate | | | | 325 | | | 330 | |
| Red Rock | | | | 330 | | | 355 | |
| Lime & Slate | | | | 355 | | | 375 | |
| Red Rock | | | | 375 | | | 381 | |
| Slate & Shells | | | | 381 | | | 387 | |
| Red Rock | | | | 387 | | | 392 | |
| Slate | | | | 392 | | | 460 | |
| Red Rock | | | | 460 | | | 470 | |
| Slate | | | | 470 | | | 491 | |
| Sand | | | | 491 | | | 500 | |
| Lime & Slate | | | | 500 | | | 510 | |
| Slate & Shells | | | | 510 | | | 550 | |
| Red Rock | | | | 550 | | | 590 | |
| Sand | | | | 590 | | | 605 | |
| Red Rock | | | | 605 | | | 625 | |
| Slate | | | | 625 | | | 665 | |
| Red Rock | | | | 665 | | | 670 | |
| Sand | | | | 670 | | | 700 | |
| Slate | | | | 700 | | | 720 | |
| Lime & Shells | | | | 720 | | | 740 | |
| Red Rock | | | | 740 | | | 800 | |
| Slate | | | | 800 | | | 805 | |
| Sand | | | | 805 | | | 825 | |
| Slate | | | | 825 | | | 837 | |
| Slate | | | | 837 | | | 843 | |

CONTINUED ON NEXT PAGE

shot
 Well was not shot at

feet, well was shot at

feet

salt

COMPLETION DATA SHEET
NO. 2
FORMATION RECORD

Well 16 A

| Name | Color | Character | Oil, Gas or Water | Top | Bottom | Thickness | Total Depth | Remarks |
|-------------------------------------|-------|-----------|-------------------|------|--------|-----------|-------------|---------|
| <u>CONTINUED FROM PREVIOUS PAGE</u> | | | | | | | | |
| Slate | | | | 843 | 850 | | | |
| Sand | | | | 850 | 860 | | | |
| Slate | | | | 860 | 868 | | | |
| Lime Shells | | | | 868 | 890 | | | |
| White Slate | | | | 890 | 905 | | | |
| Little Dunkard | | | | 905 | 930 | | | |
| Slate | | | | 930 | 960 | | | |
| Big Dunkard | | | | 960 | 1030 | | | |
| 8 1/2" casing | | | | | 970 | | | |
| Slate | | | | 1030 | 1075 | | | |
| Sand | | | | 1075 | 1090 | | | |
| Slate | | | | 1090 | 1100 | | | |
| Sand | | | | 1100 | 1130 | | | |
| Slate | | | | 1130 | 1200 | | | |
| 1st. Salt Sand | | | | 1200 | 1320 | | | |
| | | | Water | 1270 | 1280 | | | |
| Slate | | | | 1320 | 1370 | | | |
| Sand | | | | 1370 | 1375 | | | |
| Black Slate | | | | 1375 | 1440 | | | |
| 2nd. Salt Sand | | | | 1440 | 1475 | | | |
| Lime & Shells | | | | 1475 | 1535 | | | |
| Sand | | | | 1535 | 1620 | | | |
| Slate | | | | 1620 | 1640 | | | |
| Sandy Lime | | | | 1640 | 1652 | | | |
| Slate | | | | 1652 | 1746 | | | |
| Maxon Sand | | | | 1746 | 1768 | | | |
| Red Rock | | | | 1768 | 1775 | | | |
| Slate | | | | 1775 | 1795 | | | |
| Red Rock | | | | 1795 | 1800 | | | |
| Slate | | | | 1800 | 1811 | | | |
| Little Lime | | | | 1811 | 1828 | | | |
| Pencil Cave | | | | 1828 | 1846 | | | |
| Big Lime | | | | 1846 | 1875 | | | |
| 6 5/8" casing | | | | | 1851 | | | |
| Sand | | | | 1875 | 1885 | | | |
| Slate | | | | 1885 | 1890 | | | |
| Lime | | | | 1890 | 1946 | | | |
| Big Injun | | | | 1946 | 2038 | | | |
| | | | Gas | 1947 | 1954 | | | |
| Slate | | | | 2038 | 2045 | | | |
| Lime & Shells | | | | 2045 | 2060 | | | |
| Black Slate | | | | 2060 | 2097 | | | |
| Lime & Shells | | | | 2097 | 2103 | | | |
| Slate | | | | 2103 | 2180 | | | |
| Sand & Lime | | | | 2180 | 2240 | | | |
| Slate & Shells | | | | 2240 | 2250 | | | |
| Lime | | | | 2250 | 2280 | | | |
| Slate | | | | 2280 | 2401 | | | |

T. D. - 2401

Well was ~~not~~ shot at Big Injun Sand feet, well was shot at feet.

Salt salt

WEST VIRGINIA DEPARTMENT OF MINES

OIL & GAS SECTION

PRELIMINARY DATA SHEET NO. 1

File No. _____

10-10-A

Well No. 1

SOUTH PENN OIL

Company, of P. O. Drawer 1255, Pittsburgh, Pa.

_____ on the Zack Ellyson Farm
containing 160 acres. Location _____

Dekalb District, in Gilmer County, West Va.

The surface of the above tract is owned in fee by
Zack Ellyson of R.F.D. #2, Cox's Mills, W. Va., and the
mineral rights are owned by Zack Ellyson of R.F.D. #2, Cox's Mills, W. Va.

The oil and gas privileges are held under lease by
the above named company, and this well is drilled under permit No.
_____ issued by the West Virginia Department of Mines, Oil and Gas
Section, _____ 1929.

Elevation of surface at top of well, 1282 Spirit
Barometric.

The number of feet of the different sized strings used in the well.

18 feet _____ size. Wood conductor.

230 feet 10" size, and _____ feet _____ size csg.

971 feet 10" size, and _____ feet _____ size csg.

1820 feet 8" size, and _____ feet _____ size csg.

_____ size, and is 1920

_____ size, and is _____

in casing perforated at _____ feet to _____ feet.

in casing perforated at _____ feet to _____ feet.

Coal was encountered at _____ feet; thickness _____ inches, and at

_____ feet; thickness _____ inches; and at _____ feet; thickness

_____ inches.

Liners were used as follows: _____

Form 22
AFFIDAVIT IN TRIPPLICATE TO TIME AND MANNER OF
PLUGGING AND FILLING WELL

(Required by Section 9, Chapter 26, Acts 1922)

WEST VIRGINIA DEPARTMENT OF MINES
OIL AND GAS SECTION

WELL RECORD OF THIS WELL
SHOWED NO COAL

16-A
SOUTH PENN OIL COMPANY

COAL OPERATOR

NAME OF WELL OPERATOR

P. O. Drawer 1255, Pittsburgh, Pa.

ADDRESS

COMPLETE ADDRESS

August 20th, 19 31

COAL OPERATOR

WELL AND LOCATION

Dekalb District

ADDRESS

Gilmer County

COAL OPERATOR

Well No. 1

ADDRESS

Zack Ellyson Farm

AFFIDAVIT TO BE MADE IN TRIPPLICATE: ONE COPY TO BE MAILED BY REGISTERED MAIL TO THE DEPARTMENT, ONE COPY TO BE RETAINED BY THE WELL OPERATOR AND THE THIRD COPY (AND EXTRA COPIES IF REQUIRED) TO BE MAILED TO EACH COAL OPERATOR ABOVE NAMED AT THEIR RESPECTIVE ADDRESSES.

AFFIDAVIT

STATE OF WEST VIRGINIA,

COUNTY OF Roane

} ss:

John Starkey

being first duly sworn according to law depose and say that they are experienced in the work of plugging

and filling oil and gas wells and were employed by SOUTH PENN OIL COMPANY, well operator, and participated in the work of plugging and filling the above well, that said work was commenced on the

30th day of June, 19 31, and that the well was plugged and filled in the following manner:

Manner in which sand was plugged: Total depth 1990'; filled up with non-porous sediment to 1887'; drove 6 5/8" x 3' Common Wood Dry Hole Plug to 1884'; filled up with cement to 1863'; drove 2nd. 6 5/8" x 3' Common Wood Dry Hole Plug to 1860'; filled up with non-porous sediment to 1851'; pulled 6 5/8" Casing; drove 8 1/2" x 3' Common Wood Dry Hole Plug to 431'; filled up with non-porous sediment to 575'; filled in rock to 350'; drove 10" x 3' Common Wood Dry Hole Plug to 347'; filled up with non-porous sediment to within 15 ft. of top. Placed in hole one joint 10" casing 20' long for marker.

Manner in which coal was plugged:

Gave this well fire test before pulling 6 5/8" casing. Reduced hole from 6 5/8" to 1/8" opening and showed no gas.

Description of monument: Placed in hole one joint 10" casing 20' long for marker. Marker above ground 5'; filled marker with non-porous sediment and rock and put one foot of cement in top.

(THE ABOVE DESCRIPTIONS MUST BE IN DETAIL AND IN ACCORDANCE WITH THE PROVISIONS OF SECTION 10, OIL AND GAS ACT OF 1922.)
and that the work of plugging and filling said well was completed on the 17th day of July