

Location: Gilmer County, WV
 Field: Gilmer
 Facility: Norm Pad

Slot: Slot #1C
 Well: Norm 1C
 Wellbore: Norm 1C (PWB)

Gas

Point of Protection

Location Information

Facility Name	Grid East (US ft)	Grid North (US ft)	Latitude	Longitude
Norm Pad	2015441.000	673234.000	38°50'55.740"N	80°56'44.830"W
Slot	Local N (ft)	Grid East (US ft)	Latitude	Longitude
Slot #1C	0.00	2015440.970	38°50'55.740"N	80°56'44.830"W
Precision 545 (RKB) to Mud line (ft) Slot: Slot #1C			181	
Mean Sea Level to Mud line (ft) Slot: Slot #1C			-810	
Precision 545 (RKB) to Mean Sea Level			828	

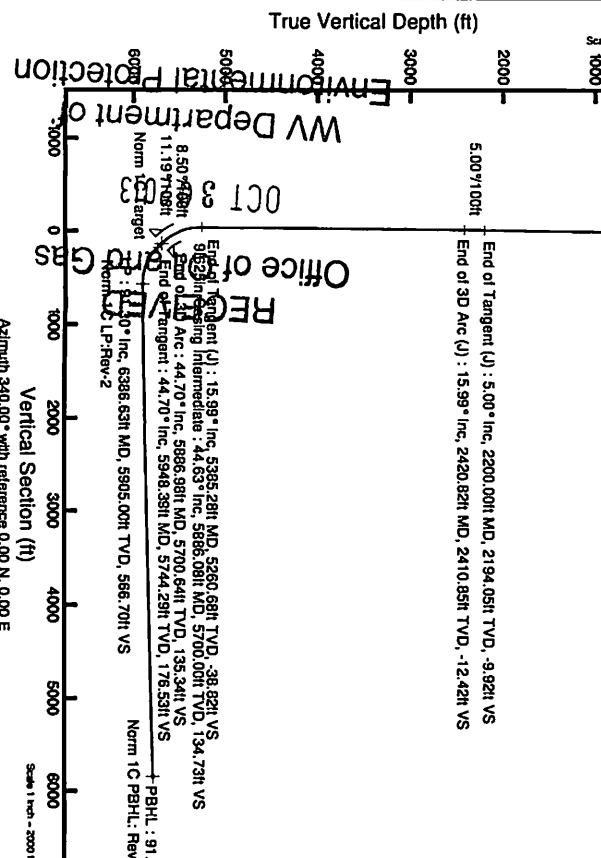
Well Profile Data

Design Comment	MD (ft)	Inc (L)	Az (L)	TVD (ft)	Local N (ft)	Local E (ft)	DLS (ft/100ft)	VS (ft)
The On	435.00	1.720	330.280	434.94	4.87	-3.75	0.00	5.85
End of Tangent	495.00	1.720	330.280	494.91	6.43	-4.64	0.00	7.63
End of 2D Arc (U)	758.32	5.000	241.000	757.85	4.30	-16.65	2.00	9.73
End of Tangent (U)	2200.00	5.000	241.000	2194.05	-56.62	-126.54	0.00	-9.92
End of 3D Arc (U)	2420.82	15.985	248.147	2410.85	-72.65	-163.29	5.00	-12.42
End of Tangent (U)	5385.28	15.985	248.147	5280.68	-376.53	-921.00	0.00	-38.82
End of 3D Arc	5948.39	44.699	322.489	5744.29	-222.41	-1192.92	8.50	-135.34
End of Tangent	6586.63	91.301	339.721	5905.00	-128.94	-1308.15	11.19	-566.70
LP	11673.49	91.301	339.721	5785.00	5084.84	-3140.02	0.00	5852.14

Targets

Name	MD (ft)	TVD (ft)	Local N (ft)	Local E (ft)	Grid East (US ft)	Grid North (US ft)	Latitude	Longitude
Norm 1C Target	5086.63	5700.64	-258.60	-1100.82	201420.21	672917.72	38°50'53.20"N	80°57'38.74"W
Norm 1C PWB Rev-2	11873.49	5785.00	5084.84	-3140.02	2012288.00	673117.00	38°51'45.89"N	80°57'24.58"W
Norm 1C PWB Rev-2	6586.63	5905.00	128.94	-1308.15	201412.78	672901.21	38°50'54.94"N	80°57'31.85"W
Norm 1C PWB Rev-2	6586.63	5905.00	128.94	-1308.15	2012288.00	673117.00	38°51'45.89"N	80°57'24.58"W
Norm 1C PWB Rev-2	6586.63	5905.00	128.94	-1308.15	201412.78	672901.21	38°50'54.94"N	80°57'31.85"W

The On: 1.72° Inc, 435.00ft MD, 434.94ft TVD, 5.85ft VS
 End of Tangent: 1.72° Inc, 495.00ft MD, 494.91ft TVD, 7.63ft VS
 End of 3D Arc (U): 5.00° Inc, 758.32ft MD, 757.85ft TVD, 9.73ft VS

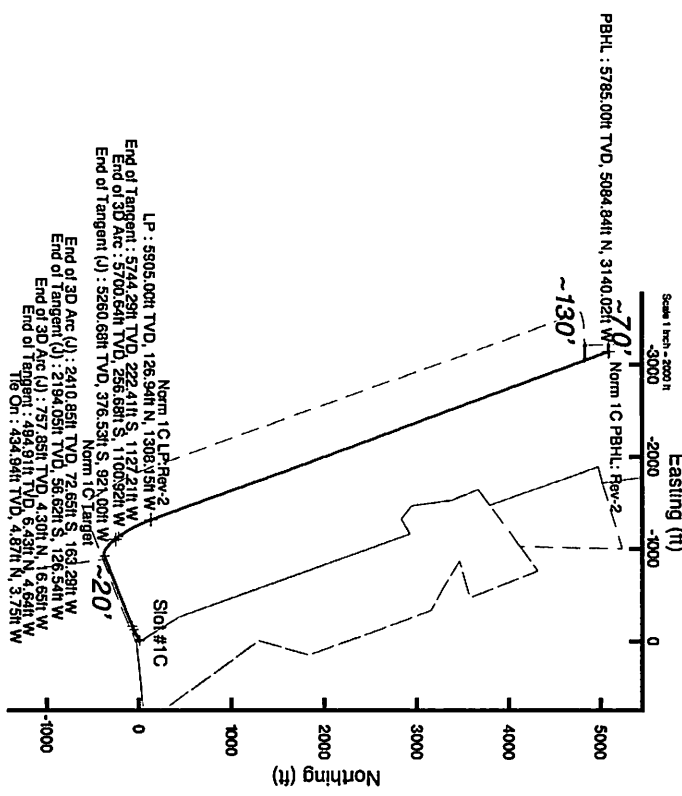


Hole and Logging Sections

Name	MD (ft)	Inc (L)	Az (L)	TVD (ft)	Local N (ft)	Local E (ft)	Grid East (US ft)	Grid North (US ft)	Latitude	Longitude	Wellbore
13.375m casing surface	1800			1800	0.00	0.00	2015440.970	673234.000	38°50'55.740"N	80°56'44.830"W	Norm 1C (PWB)
8.625m casing intermediate	1900			1900	0.00	0.00	2015440.970	673234.000	38°50'55.740"N	80°56'44.830"W	Norm 1C (PWB)
8.75m Open Hole	1900			1900	0.00	0.00	2015440.970	673234.000	38°50'55.740"N	80°56'44.830"W	Norm 1C (PWB)
8.75m Open Hole	1900			1900	0.00	0.00	2015440.970	673234.000	38°50'55.740"N	80°56'44.830"W	Norm 1C (PWB)
8.75m Open Hole	1900			1900	0.00	0.00	2015440.970	673234.000	38°50'55.740"N	80°56'44.830"W	Norm 1C (PWB)

Bottom Hole Location

MD (ft)	Inc (L)	Az (L)	TVD (ft)	Local N (ft)	Local E (ft)	Grid East (US ft)	Grid North (US ft)	Latitude	Longitude
11673.49	91.301	339.721	5785.00	5084.84	-3140.02	2012288.00	673117.00	38°51'45.89"N	80°57'24.58"W



LP: 5905.00ft TVD, 128.94ft N, 1308.15ft W
 End of Tangent: 5744.29ft TVD, 222.41ft S, 1187.21ft W
 End of 3D Arc: 5700.64ft TVD, 256.88ft S, 1106.82ft W
 End of Tangent (U): 5260.68ft TVD, 376.53ft S, 924.00ft W
 Norm 1C Target
 End of 3D Arc (U): 2410.85ft TVD, 72.65ft S, 163.29ft W
 End of Tangent (U): 2194.05ft TVD, 36.62ft S, 126.54ft W
 End of 3D Arc (U): 179.85ft TVD, 3.00ft N, 6.59ft W
 End of Tangent (U): 434.94ft TVD, 4.87ft N, 3.75ft W

Scale 1 inch = 2000 ft
 Scale 1 inch = 3000 ft
 Azimuth 340.00° with reference 0.00 N, 0.00 E
 12/15/2013



Actual Wellpath Report

Norm 1C (AWP)[Curve]Proj:
Page n of nn



REFERENCE WELLPATH IDENTIFICATION			
Operator	NOBLE ENERGY	Slot	Slot #1C
Area	Gilmer County, WV	Well	Norm 1C
Field	Gilmer	Wellbore	Norm 1C (AWB)
Facility	Norm Pad		

REPORT SETUP INFORMATION			
Projection System	NAD27 / Lambert West Virginia SP, Southern Zone (4702), US feet	Software System	WellArchitect@ 3.0.0
North Reference	True	User	Bennaarw
Scale	0.999993	Report Generated	4/13/2013 at 5:01:28 AM
Convergence at slot	0.03° East	Database/Source file	WellArchitect/Norm_1C_AWB_.xml

WELLPATH LOCATION						
	Local coordinates		Grid coordinates		Geographic coordinates	
	North[ft]	East[ft]	Easting[US ft]	Northing[US ft]	Latitude	Longitude
Slot Location	0.04	-0.03	2015440.97	673234.04	38°50'55.740"N	80°56'44.830"W
Facility Reference Pt			2015441.00	673234.00	38°50'55.740"N	80°56'44.830"W
Field Reference Pt			0.00	0.00	36°47'50.602"N	87°50'06.103"W

WELLPATH DATUM			
Calculation method	Minimum curvature	Precision 542 (RKB) to Facility Vertical Datum	18.00ft
Horizontal Reference Pt	Slot	Precision 542 (RKB) to Mean Sea Level	828.00ft
Vertical Reference Pt	Precision 542 (RKB)	Precision 542 (RKB) to Mud Line at Slot (Slot #1C)	18.00ft
MD Reference Pt	Precision 542 (RKB)	Section Origin	N 0.00, E 0.00 ft
Field Vertical Reference	Mean Sea Level	Section Azimuth	RECEIVED

Office of Oil and Gas

NOV 18 2013

WV Department of
Environmental Protection

RECEIVED
Office of Oil and Gas

OCT 30 2013

WV Department of
Environmental Protection

12/13/2013

4/13/2013



Actual Wellpath Report

Norm 1C (AWP)[Curve]Proj:
Page n of nn



REFERENCE WELLPATH IDENTIFICATION			
Operator	NOBLE ENERGY	Slot	Slot #1C
Area	Gilmer County, WV	Well	Norm 1C
Field	Gilmer	Wellbore	Norm 1C (AWB)
Facility	Norm Pad		

WELLPATH DATA (157 stations) † = interpolated/extrapolated station								
MD [ft]	Inclination [°]	Azimuth [°]	TVD [ft]	Vert Sect [ft]	North [ft]	East [ft]	DLS [°/100ft]	
0.00†	0.000	309.390	0.00	0.00	0.00	0.00	0.00	0.00
18.00	0.000	309.390	18.00	0.00	0.00	0.00	0.00	0.00
201.00	0.660	309.390	201.00	0.91	0.67	-0.81	0.36	0.36
388.00	1.660	328.870	387.96	4.49	3.67	-3.05	0.57	0.57
435.00	1.720	330.280	434.94	5.85	4.87	-3.75	0.16	0.16
514.00	2.010	317.270	513.89	8.30	6.91	-5.28	0.65	0.65
530.00	1.930	310.120	529.88	8.79	7.29	-5.67	1.61	1.61
562.00	2.190	279.660	561.86	9.56	7.74	-6.69	3.47	3.47
593.00	2.830	256.830	592.84	9.95	7.67	-8.02	3.79	3.79
625.00	3.500	238.040	624.79	9.84	6.97	-9.62	3.83	3.83
656.00	4.920	225.020	655.70	9.08	5.53	-11.36	5.49	5.49
688.00	4.880	225.060	687.59	7.93	3.60	-13.29	0.13	0.13
720.00	5.230	225.730	719.46	6.75	1.62	-15.30	1.11	1.11
814.00	4.970	241.290	813.09	4.38	-3.33	-21.94	1.49	1.49
909.00	5.040	245.260	907.73	3.41	-7.05	-29.34	0.37	0.37
1004.00	4.970	242.720	1002.37	2.54	-10.68	-36.79	0.24	0.24
1099.00	5.160	242.410	1097.00	1.46	-14.55	-44.23	0.20	0.20
1194.00	4.620	236.000	1191.65	-0.03	-18.67	-51.19	0.81	0.81
1288.00	4.120	234.450	1285.38	-1.85	-22.75	-57.07	0.55	0.55
1383.00	5.210	244.950	1380.07	-3.15	-26.56	-63.76	1.45	1.45
1473.00	5.080	249.070	1469.70	-3.57	-29.71	-71.18	0.44	0.44
1562.00	5.050	248.670	1558.36	-3.73	-32.54	-78.51	0.05	0.05
1652.00	4.530	247.500	1648.04	-3.97	-35.34	-85.48	0.59	0.59
1742.00	4.380	246.410	1737.77	-4.34	-38.08	-91.92	0.19	0.19
1831.00	4.580	249.250	1826.50	-4.60	-40.70	-98.36	0.34	0.34
1921.00	4.960	241.780	1916.19	-5.21	-43.81	-105.14	0.81	0.81
2010.00	4.310	246.050	2004.90	-5.99	-46.99	-111.59	0.83	0.83
2100.00	4.090	236.690	2094.65	-6.96	-50.12	-117.36	0.80	0.80
2145.00	4.360	243.360	2139.53	-7.53	-51.77	-120.23	1.24	1.24
2189.00	5.800	247.500	2183.36	-7.82	-53.37	-123.78	3.38	3.38
2234.00	7.630	248.790	2228.05	-7.98	-55.32	-128.67	4.08	4.08
2276.00	8.730	251.480	2269.62	-7.96	-57.34	-134.29	2.77	2.77
2320.00	11.220	252.780	2312.95	-7.66	-59.67	-141.55	5.68	5.68
2365.00	14.220	250.400	2356.84	-7.41	-62.82	-150.94	6.77	6.77
2410.00	16.600	248.540	2400.22	-7.54	-67.03	-162.83	5.40	5.40
2455.00	17.250	247.960	2443.27	-7.94	-71.89	-174.30	1.49	1.49
2545.00	16.740	248.450	2529.34	-8.76	-81.63	-198.72	0.59	0.59
2634.00	16.270	248.080	2614.68	-9.53	-91.02	-222.21	0.54	0.54
2724.00	15.960	249.200	2701.14	-10.12	-100.12	-245.47	0.49	0.49
2814.00	16.250	247.730	2787.61	-10.79	-109.28	-268.87	0.58	0.58
2903.00	15.540	246.620	2873.20	-11.99	-118.73	-291.16	0.87	0.87
2993.00	15.370	247.820	2959.95	-13.16	-128.02	-313.27	0.40	0.40
3083.00	15.640	245.860	3046.67	-14.48	-137.48	-335.38	0.65	0.65

RECEIVED
Office of Oil and Gas
NOV-22-2013
WV Department of Environmental Protection

12/13/2013

3172.00	16.310	246.200	3132.24	-16.18	-147.43	-357.77	0.76
3262.00	15.970	245.990	3218.69	-17.88	-157.57	-380.64	0.38

RECEIVED
Office of Oil and Gas
NOV 18 2013
WV Department of
Environmental Protection

RECEIVED
Office of Oil and Gas
OCT 30 2013
WV Department of
Environmental Protection
12/13/2013



Actual Wellpath Report

Norm 1C (AWP)[Curve]Proj:
Page n of nn



REFERENCE WELLPATH IDENTIFICATION			
Operator	NOBLE ENERGY	Slot	Slot #1C
Area	Gilmer County, WV	Well	Norm 1C
Field	Gilmer	Wellbore	Norm 1C (AWB)
Facility	Norm Pad		

WELLPATH DATA (157 stations)								
MD [ft]	Inclination [°]	Azimuth [°]	TVD [ft]	Vert Sect [ft]	North [ft]	East [ft]	DLS ["/100ft]	
3307.00	15.490	243.490	3262.00	-19.00	-162.77	-391.67	1.85	
3352.00	15.810	243.760	3305.34	-20.34	-168.17	-402.55	0.73	
3396.00	16.420	244.060	3347.61	-21.64	-173.54	-413.52	1.40	
3441.00	16.510	244.400	3390.76	-22.92	-179.08	-425.00	0.29	
3486.00	15.830	244.950	3433.98	-24.09	-184.44	-436.33	1.55	
3532.00	15.210	243.750	3478.30	-25.30	-189.77	-447.42	1.52	
3622.00	13.270	248.390	3565.54	-26.87	-198.79	-467.62	2.50	
3711.00	13.170	250.020	3652.18	-27.15	-206.02	-486.64	0.43	
3801.00	13.240	247.030	3739.80	-27.68	-213.55	-505.77	0.76	
3845.00	14.800	249.620	3782.49	-27.98	-217.47	-515.68	3.82	
3890.00	16.580	252.120	3825.81	-27.78	-221.44	-527.18	4.23	
3980.00	17.940	253.340	3911.76	-26.50	-229.36	-552.68	1.56	
4070.00	18.220	253.720	3997.31	-24.78	-237.28	-579.46	0.34	
4159.00	19.490	254.360	4081.54	-22.75	-245.18	-607.12	1.45	
4249.00	20.500	254.170	4166.11	-20.46	-253.53	-636.74	1.12	
4339.00	21.300	251.800	4250.19	-18.80	-262.93	-667.43	1.29	
4383.00	20.860	249.270	4291.24	-18.65	-268.20	-682.35	2.30	
4428.00	20.830	247.810	4333.30	-19.06	-274.06	-697.25	1.16	
4518.00	18.540	244.760	4418.04	-20.98	-286.21	-725.01	2.79	
4607.00	18.670	245.760	4502.39	-23.32	-298.09	-750.80	0.39	
4697.00	15.490	246.240	4588.41	-25.18	-308.85	-774.94	3.54	
4779.00	15.660	248.070	4667.39	-26.27	-317.39	-795.23	0.63	
4868.00	16.180	247.830	4752.98	-27.14	-326.56	-817.86	0.59	
4958.00	16.720	249.770	4839.30	-27.67	-335.77	-841.62	0.86	
5048.00	16.420	244.450	4925.56	-28.95	-345.73	-865.24	1.72	
5138.00	16.450	242.320	5011.89	-31.88	-357.14	-888.00	0.67	
5228.00	13.970	239.570	5098.73	-35.55	-368.56	-908.66	2.87	
5318.00	13.900	244.590	5186.08	-38.54	-378.70	-927.79	1.35	
5362.00	13.700	251.090	5228.82	-38.94	-382.66	-937.49	3.55	
5407.00	13.420	264.090	5272.57	-37.57	-384.92	-947.73	6.79	
5452.00	13.850	280.030	5316.32	-33.60	-384.52	-947.73	3.38	
5497.00	14.720	295.250	5359.94	-26.84	-381.14	-968.71	8.54	
5542.00	17.160	304.580	5403.22	-17.37	-374.94	-979.45	7.85	
5587.00	19.640	311.240	5445.92	-5.32	-366.18	-990.51	7.22	
5632.00	22.730	314.770	5487.87	9.17	-355.07	-1002.37	7.43	
5676.00	26.010	317.440	5527.95	25.78	-341.97	-1014.58	7.86	
5721.00	29.490	320.430	5567.77	45.33	-326.67	-1027.67	8.33	
5766.00	32.740	322.470	5606.29	67.38	-307.97	-1043.14	7.59	
5822.00	37.350	323.670	5652.13	98.14	-282.26	-1062.44	8.32	
5873.00	40.960	325.300	5691.67	129.16	-256.04	-1081.13	7.36	
5918.00	43.110	325.690	5725.09	158.33	-231.21	-1098.19	4.81	
5963.00	47.570	326.050	5756.71	189.37	-204.72	-1116.15	9.93	
6008.00	50.970	326.380	5786.07	222.48	-176.38	-1135.10	7.58	

RECEIVED
Office of Oil and Gas
NCT 12/13/2013
WV Department of Environmental Protection

12/13/2013

6053.00	52.600	326.150	5813.91	256.82	-146.98	-1154.74	3.64
6098.00	55.330	328.670	5840.38	292.33	-116.32	-1174.32	7.57

RECEIVED
Office of Oil and Gas
NOV 18 2013
WV Department of
Environmental Protection

RECEIVED
Office of Oil and Gas

OCT 30 2013

WV Department of
Environmental Protection



Actual Wellpath Report

Norm 1C (AWP)[Curve]Proj:
Page n of nn



REFERENCE WELLPATH IDENTIFICATION			
Operator	NOBLE ENERGY	Slot	Slot #1C
Area	Gilmer County, WV	Well	Norm 1C
Field	Gilmer	Wellbore	Norm 1C (AWB)
Facility	Norm Pad		

WELLPATH DATA (157 stations)							
MD [ft]	Inclination [°]	Azimuth [°]	TVD [ft]	Vert Sect [ft]	North [ft]	East [ft]	DLS [°/100ft]
6143.00	60.840	328.910	5864.16	329.79	-83.66	-1194.11	12.25
6188.00	66.430	329.110	5884.14	369.35	-49.11	-1214.86	12.43
6232.00	71.800	329.880	5899.82	409.76	-13.71	-1235.71	12.31
6277.00	77.610	331.070	5911.68	452.55	24.05	-1257.09	13.16
6322.00	83.410	332.050	5919.10	496.43	63.06	-1278.21	13.07
6367.00	89.450	334.290	5921.90	541.00	103.12	-1298.47	14.31
6407.00	90.680	336.760	5921.85	580.88	139.52	-1315.04	6.90
6502.00	90.520	335.310	5920.86	675.64	226.33	-1353.62	1.54
6592.00	89.750	336.550	5920.65	765.41	308.50	-1390.33	1.62
6682.00	91.050	339.040	5920.02	855.34	391.81	-1424.34	3.12
6771.00	90.710	339.220	5918.65	944.31	474.96	-1456.04	0.43
6861.00	89.140	337.090	5918.77	1034.26	558.49	-1489.53	2.94
6951.00	90.000	338.770	5919.45	1124.19	641.89	-1523.34	2.10
7041.00	90.770	342.920	5918.84	1214.16	726.89	-1552.86	4.69
7130.00	90.830	343.210	5917.60	1303.03	812.02	-1578.79	0.33
7220.00	91.170	342.640	5916.03	1392.89	898.04	-1605.21	0.74
7309.00	91.200	343.490	5914.19	1481.75	983.16	-1631.13	0.96
7398.00	90.590	341.180	5912.80	1570.66	1067.95	-1658.13	2.68
7488.00	89.970	340.820	5912.36	1660.64	1153.04	-1687.43	0.80
7578.00	91.380	341.240	5911.30	1750.62	1238.15	-1716.68	1.63
7667.00	91.290	340.730	5909.22	1839.58	1322.27	-1745.67	0.58
7757.00	90.000	338.810	5908.21	1929.57	1406.70	-1776.79	2.57
7846.00	90.830	338.350	5907.56	2018.54	1489.55	-1809.29	1.07
7936.00	90.150	339.700	5906.80	2108.52	1573.58	-1841.51	1.68
8026.00	90.370	340.110	5906.39	2198.52	1658.10	-1872.43	0.52
8115.00	90.150	338.840	5905.98	2287.51	1741.45	-1903.63	1.45
8205.00	91.730	339.600	5904.51	2377.49	1825.58	-1935.56	1.95
8295.00	93.890	342.280	5900.09	2467.35	1910.53	-1964.91	3.82
8384.00	92.800	341.200	5894.90	2556.16	1994.91	-1992.75	1.72
8474.00	92.780	340.640	5890.52	2646.04	2079.86	-2022.13	0.62
8564.00	90.430	339.820	5888.00	2736.00	2164.51	-2052.56	2.77
8653.00	89.570	339.500	5888.00	2824.99	2247.96	-2083.50	1.03
8743.00	89.260	338.610	5888.92	2914.98	2331.01	-2114.87	1.05
8832.00	89.660	339.930	5889.76	3003.96	2415.24	-2147.17	1.55
8922.00	91.820	340.730	5888.59	3093.95	2499.98	-2177.46	2.56
9012.00	91.360	340.300	5886.10	3183.91	2584.79	-2207.47	0.70
9101.00	91.170	340.440	5884.13	3272.88	2668.60	-2237.36	0.27
9191.00	88.740	336.810	5884.20	3362.84	2752.58	-2270.15	4.85
9281.00	89.080	338.400	5885.92	3452.74	2835.58	-2301.91	1.81
9370.00	89.410	339.400	5887.09	3541.71	2918.61	-2336.47	1.18
9460.00	89.260	339.950	5888.13	3631.71	3003.00	-2367.73	0.63
9550.00	88.740	339.310	5889.70	3721.69	3087.36	-2399.05	0.92
9640.00	89.780	340.560	5890.87	3811.68	3171.88	-2429.92	1.81

RECEIVED
Office of Oil and Gas
2013
WV Department of Environmental Protection

12/13/2013

9729.00	89.290	340.530	5891.59	3900.67	3255.80	-2459.57	0.55
9819.00	88.930	340.050	5892.99	3990.66	3340.52	-2489.92	0.67

RECEIVED
Office of Oil and Gas
NOV 18 2013
WV Department of
Environmental Protection

RECEIVED
Office of Oil and Gas
OCT 30 2013

WV Department of
Environmental Protection



Actual Wellpath Report

Norm 1C (AWP)[Curve]Proj:

Page n of nn



REFERENCE WELLPATH IDENTIFICATION			
Operator	NOBLE ENERGY	Slot	Slot #1C
Area	Gilmer County, WV	Well	Norm 1C
Field	Gilmer	Wellbore	Norm 1C (AWB)
Facility	Norm Pad		

WELLPATH DATA (157 stations)							
MD [ft]	Inclination [°]	Azimuth [°]	TVD [ft]	Vert Sect [ft]	North [ft]	East [ft]	DLS [°/100ft]
9908.00	88.300	338.850	5895.14	4079.63	3423.83	-2521.15	1.52
9998.00	89.480	339.960	5896.88	4169.60	3508.06	-2552.80	1.80
10087.00	90.150	339.400	5897.17	4258.60	3591.52	-2583.70	0.98
10177.00	89.040	339.030	5897.80	4348.59	3675.65	-2615.64	1.30
10267.00	89.910	338.990	5898.63	4438.57	3759.68	-2647.88	0.97
10356.00	89.780	339.760	5898.87	4527.56	3842.97	-2679.23	0.88
10446.00	91.350	339.440	5897.98	4617.55	3927.32	-2710.60	1.78
10535.00	91.700	339.540	5895.61	4706.52	4010.65	-2741.77	0.41
10625.00	91.200	336.960	5893.34	4796.44	4094.21	-2775.10	2.92
10715.00	90.890	338.030	5891.69	4886.34	4177.34	-2809.55	1.24
10804.00	87.410	338.620	5893.01	4975.28	4260.02	-2842.41	3.97
10894.00	87.480	338.090	5897.03	5065.15	4343.59	-2875.57	0.59
10984.00	88.030	340.270	5900.55	5155.06	4427.65	-2907.54	2.50
11073.00	88.330	340.800	5903.38	5244.01	4511.52	-2937.18	0.68
11163.00	90.620	341.900	5904.20	5333.98	4596.78	-2965.96	2.82
11252.00	90.860	340.750	5903.05	5422.95	4681.09	-2994.45	1.32
11342.00	90.190	340.490	5902.23	5512.94	4765.98	-3024.31	0.80
11432.00	89.600	339.130	5902.39	5602.93	4850.45	-3055.38	1.65
11521.00	89.690	338.360	5902.95	5691.91	4933.40	-3087.64	0.87
11611.00	89.630	337.600	5903.48	5781.85	5016.83	-3121.38	0.85
11631.00	89.480	337.410	5903.64	5801.83	5035.31	-3129.03	1.21
11680.00	89.480	337.410	5904.08	5850.78	5080.54	-3147.89	0.00

Office of Oil and Gas
 NOV 18 2013
 WV Department of Environmental Protection

RECEIVED
 Office of Oil and Gas
 NOV 18 2013
 WV Department of Environmental Protection

12/13/2013



Actual Wellpath Report

Norm 1C (AWP)[Curve]Proj:
Page n of nn



REFERENCE WELLPATH IDENTIFICATION			
Operator	NOBLE ENERGY	Slot	Slot #1C
Area	Gilmer County, WV	Well	Norm 1C
Field	Gilmer	Wellbore	Norm 1C (AWB)
Facility	Norm Pad		

TARGETS									
Name	MD [ft]	TVD [ft]	North [ft]	East [ft]	Grid East [US ft]	Grid North [US ft]	Latitude	Longitude	Shape
Norm 1C PBHL: Rev-4		5910.00	5084.84	-3140.02	2012298.00	678317.00	38°51'45.999"N	80°57'24.526"W	point
Norm 1C LP:Rev-3		5920.00	112.89	-1301.61	2014139.31	673346.17	38°50'56.856"N	80°57'01.282"W	point
Norm 1C PBHL:EX-02		6016.00	5084.84	-3140.02	2012298.00	678317.00	38°51'45.999"N	80°57'24.526"W	point
Norm 1C LP:EX-02		6062.13	126.94	-1308.15	2014132.76	673360.21	38°50'56.994"N	80°57'01.365"W	point

WELLPATH COMPOSITION - Ref Wellbore: Norm 1C (AWB) Ref Wellpath: Norm 1C (AWP)[Curve]Proj:				
Start MD [ft]	End MD [ft]	Positional Uncertainty Model	Log Name/Comment	Wellbore
18.00	435.00	Generic gyro - northseeking (Standard)	Gyro Surveys <201'-435'>	Norm 1C (AWB)
435.00	5822.00	NaviTrak (MagCorr)	BHI MWD Surveys (435')(514'-5822')	Norm 1C (AWB)
5822.00	11631.00	NaviTrak (MagCorr)	BHI MWD Surveys [Curve&Lat.] (5822')(5873'-xx')	Norm 1C (AWB)
11631.00	11680.00	Blind Drilling (std)	Projection to bit	Norm 1C (AWB)

RECEIVED
Office of Oil and Gas

NOV 18 2013

WV Department of
Environmental Protection

RECEIVED
Office of Oil and Gas

OCT 30 2013

WV Department of
Environmental Protection

12/13/2013