





2104891P

Topo Quad: Glenville 7.5'

Scale: 1" = 2000'

County: Gilmer

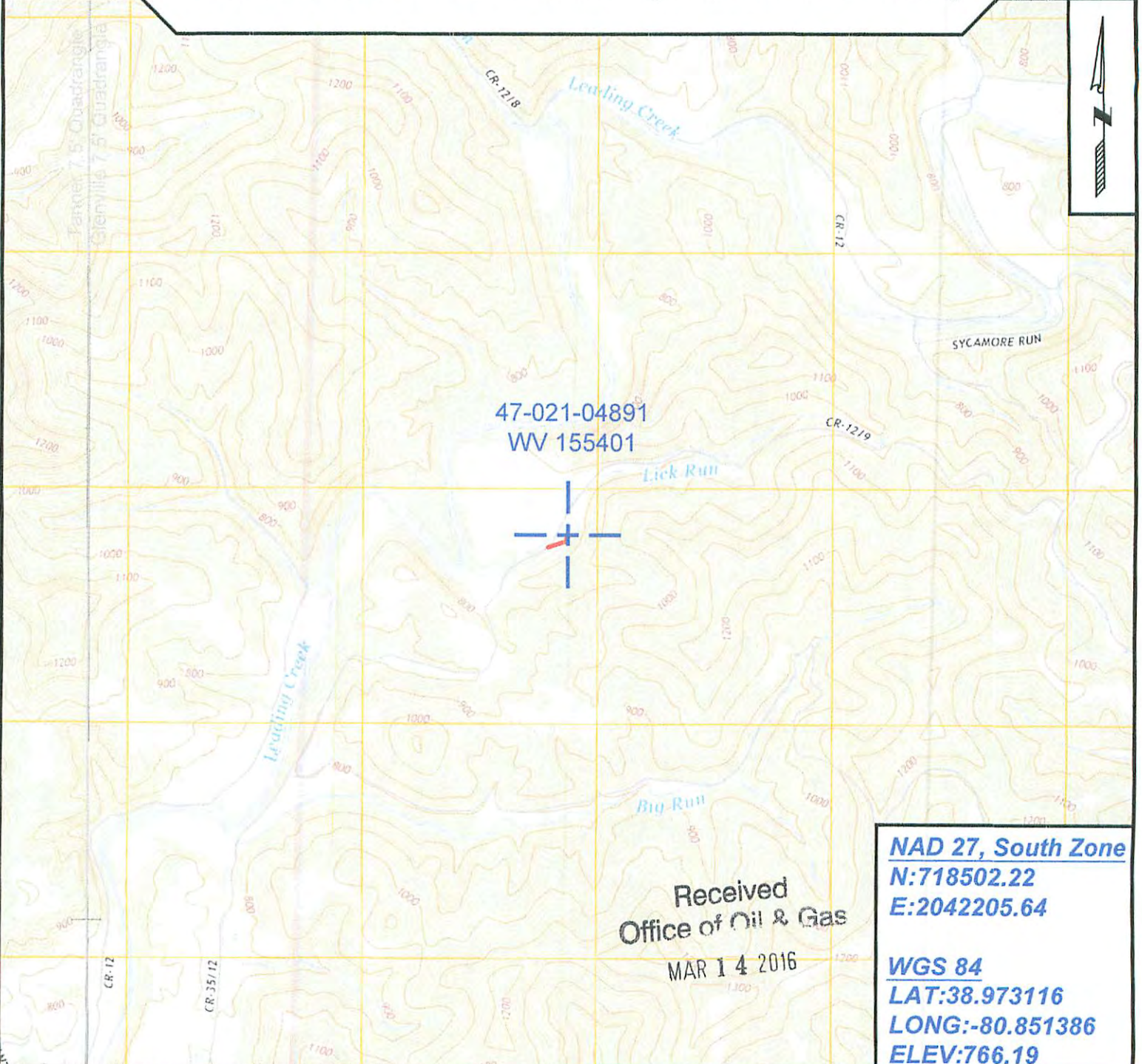
Date: February 25, 2016

District: DeKalb

Project No: 25-19-00-07

# 47-021-04891 WV 155401 (Davis #1A-W595)

Topo



**NAD 27, South Zone**  
**N:718502.22**  
**E:2042205.64**

**WGS 84**  
**LAT:38.973116**  
**LONG:-80.851386**  
**ELEV:766.19**



**SURVEYING AND MAPPING SERVICES PERFORMED BY:**  
**ALLEGHENY SURVEYS, INC.**  
 1-800-482-8606  
 237 Birch River Road  
 Birch River, WV 26610  
 PH: (304) 649-8606  
 FAX: (304) 649-8608

**PREPARED FOR:**  
**EQT Production Company**  
 P.O. Box 280  
 Bridgeport, WV 26330  
**04/08/2016**