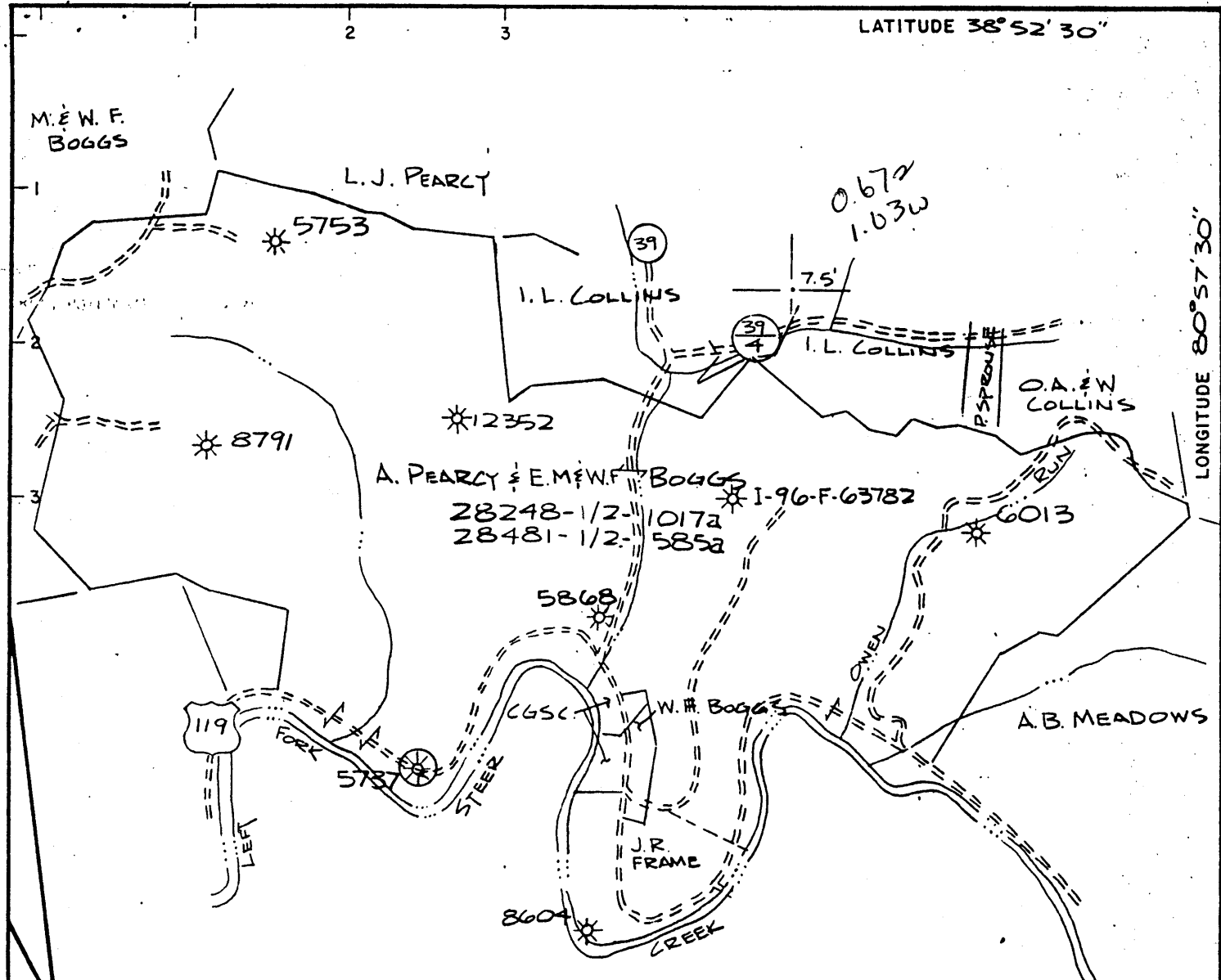


5,500'

LATITUDE 38° 52' 30"

LONGITUDE 80° 57' 30"



A. PEARCY & E.M.F.W.F. BOGGS  
 28248-1/2-1017a  
 28481-1/2-585a  
 CENTER DIST., GILMER CO., WVA.  
 MAP SHEET 96 S- W-  
 TOPO-NORMANTOWN 7.5'  
 SCALE-1"=1320'

NORTH

021-3528

WELL 5753