

WW-7
8-30-06



West Virginia Department of Environmental Protection
Office of Oil and Gas
WELL LOCATION FORM: GPS

API: 47-021-03448 WELL NO.: WV 154061 (Barker #3)

FARM NAME: Barker

RESPONSIBLE PARTY NAME: EQT Production Company

COUNTY: Gilmer DISTRICT: Glennville

QUADRANGLE: Gilmer 7.5'

SURFACE OWNER: Coastal Lumber Company

ROYALTY OWNER: Elaine Arbogast, et al.

UTM GPS NORTHING: 4305158

UTM GPS EASTING: 528924 GPS ELEVATION: 350 m (1149 ft)

The Responsible Party named above has chosen to submit GPS coordinates in lieu of preparing a new well location plat for a plugging permit or assigned API number on the above well. The Office of Oil and Gas will not accept GPS coordinates that do not meet the following requirements:


1. Datum: NAD 1983, Zone: 17 North, Coordinate Units: meters, Altitude: height above mean sea level (MSL) – meters.
2. Accuracy to Datum – 3.05 meters
3. Data Collection Method:

Survey grade GPS : Post Processed Differential
Real-Time Differential

Mapping Grade GPS X: Post Processed Differential X
Real-Time Differential

4. **Letter size copy of the topography map showing the well location.**

I the undersigned, hereby certify this data is correct to the best of my knowledge and belief and shows all the information required by law and the regulations issued and prescribed by the Office of Oil and Gas.


Signature
10/25/13
Date

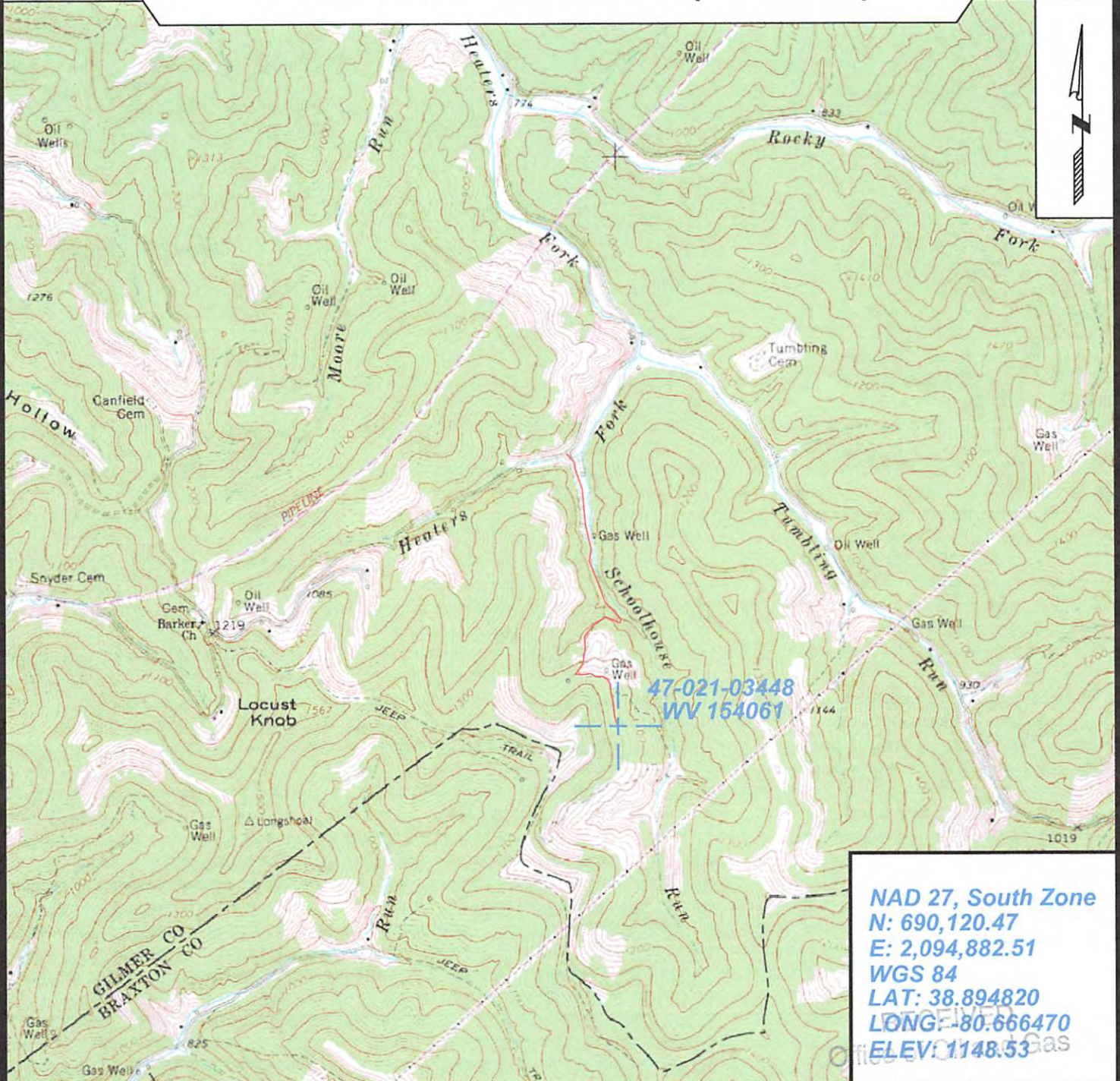
PS# 2180
Title

RECEIVED
Office of Oil and Gas
NOV 01 2013

Topo Quad: Gilmer 7.5' Scale: 1" = 2000'
 County: Gilmer Date: October 17, 2013
 District: Glenville Project No: 25-19-00-07

47-021-03448 WV 154061 (Barker #3)

Topo



NAD 27, South Zone
 N: 690,120.47
 E: 2,094,882.51
 WGS 84
 LAT: 38.894820
 LONG: -80.666470
 ELEV: 1148.53



SURVEYING AND MAPPING SERVICES PERFORMED BY:
ALLEGHENY SURVEYS, INC.
 1-800-482-8606
 P.O. BOX 438
 BIRCH RIVER, WV 26610
 PH: (304) 649-8606
 FAX: (304) 649-8608

PREPARED FOR:
 NOV 01 2013
EQT Production Company
 115 Professional Place
 P.O. Box 280
 Bridgeport, WV 26330