

Topo Quad: Glenville 7.5'

Scale: 1" = 2000' *21-03169P*

County: Gilmer

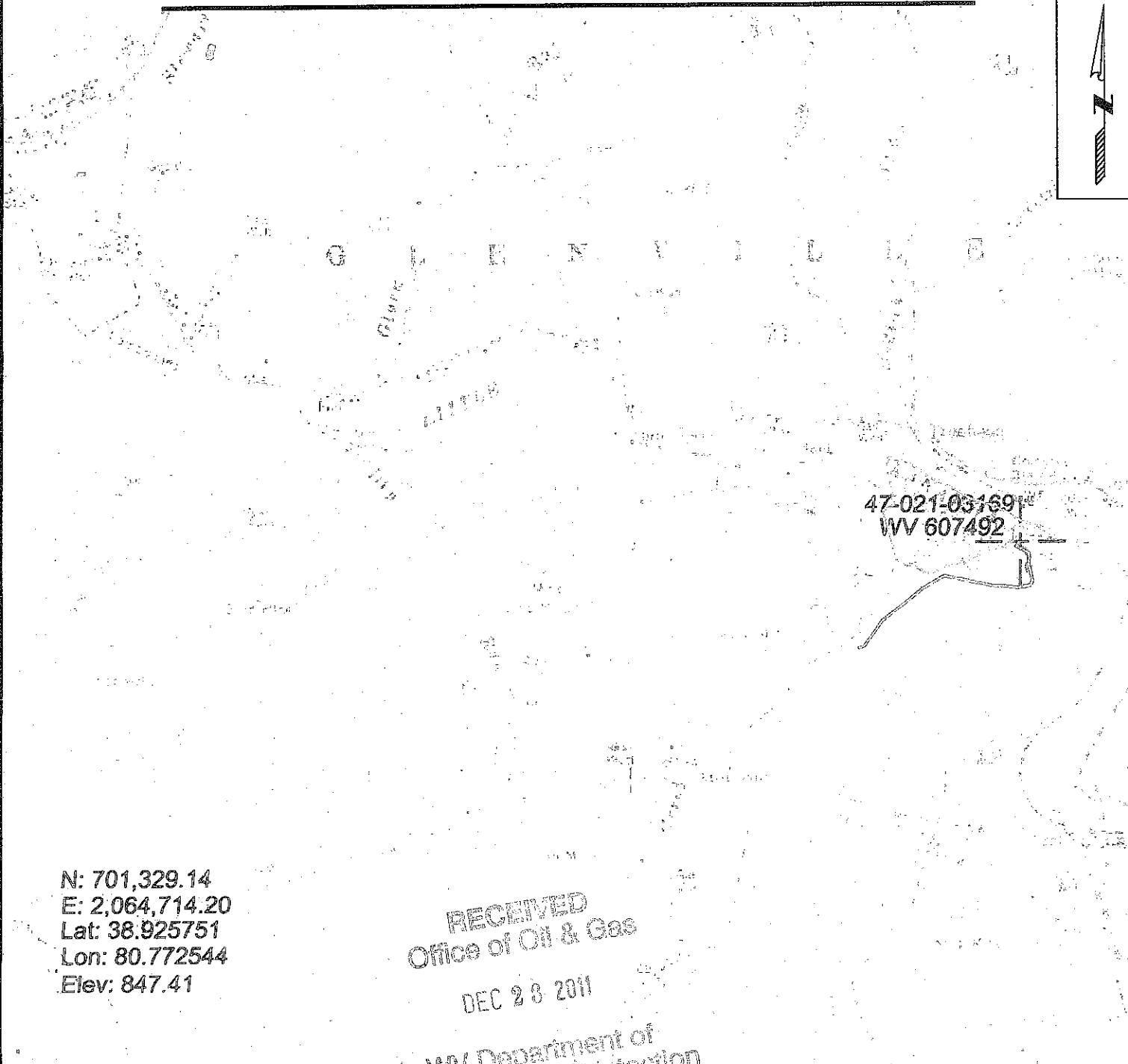
Date: June 8, 2011

District: Glenville

Project No: 25-19-00-07

47-021-03169 (WV 607492)

Topo



N: 701,329.14
E: 2,064,714.20
Lat: 38.925751
Lon: 80.772544
Elev: 847.41

RECEIVED
Office of Oil & Gas

DEC 28 2011

WV Department of
Environmental Protection

SURVEYING AND MAPPING SERVICES PERFORMED BY:

ALLEGHENY SURVEYS, INC.

1-800-482-8606
P.O. BOX 438
BIRCH RIVER, WV 26610
PH: (304) 649-8606
FAX: (304) 649-8608

PREPARED FOR:

EQT Production Company

1710 Pennsylvania Ave.
Charleston, WV 25302

