

WW-7
8-30-06



West Virginia Department of Environmental Protection
Office of Oil and Gas
WELL LOCATION FORM: GPS

API: 47-021-03142 WELL NO.: WV 607245 (C. H. Miles #7245)

FARM NAME: Miles

RESPONSIBLE PARTY NAME: EQT Production Company

COUNTY: Gilmer DISTRICT: Glennville

QUADRANGLE: Glennville 7.5'

SURFACE OWNER: Benny F. McCune

ROYALTY OWNER: Ernest L. Arbuckle Family Trust, et al.

UTM GPS NORTHING: 4313985

UTM GPS EASTING: 520605 GPS ELEVATION: 306 m (1004 ft)

The Responsible Party named above has chosen to submit GPS coordinates in lieu of preparing a new well location plat for a plugging permit or assigned API number on the above well. The Office of Oil and Gas will not accept GPS coordinates that do not meet the following requirements:

- Datum: NAD 1983, Zone: 17 South, Coordinate Units: meters, Altitude: height above mean sea level (MSL) – meters.
- Accuracy to Datum – 3.05 meters
- Data Collection Method:
Survey grade GPS : Post Processed Differential
Real-Time Differential
Mapping Grade GPS X: Post Processed Differential X
Real-Time Differential

4. Letter size copy of the topography map showing the well location.

I the undersigned, hereby certify this data is correct to the best of my knowledge and belief and shows all the information required by law and the regulations issued and prescribed by the Office of Oil and Gas.

[Signature]
Signature

PS # 2180
Title

2/10/15
Date

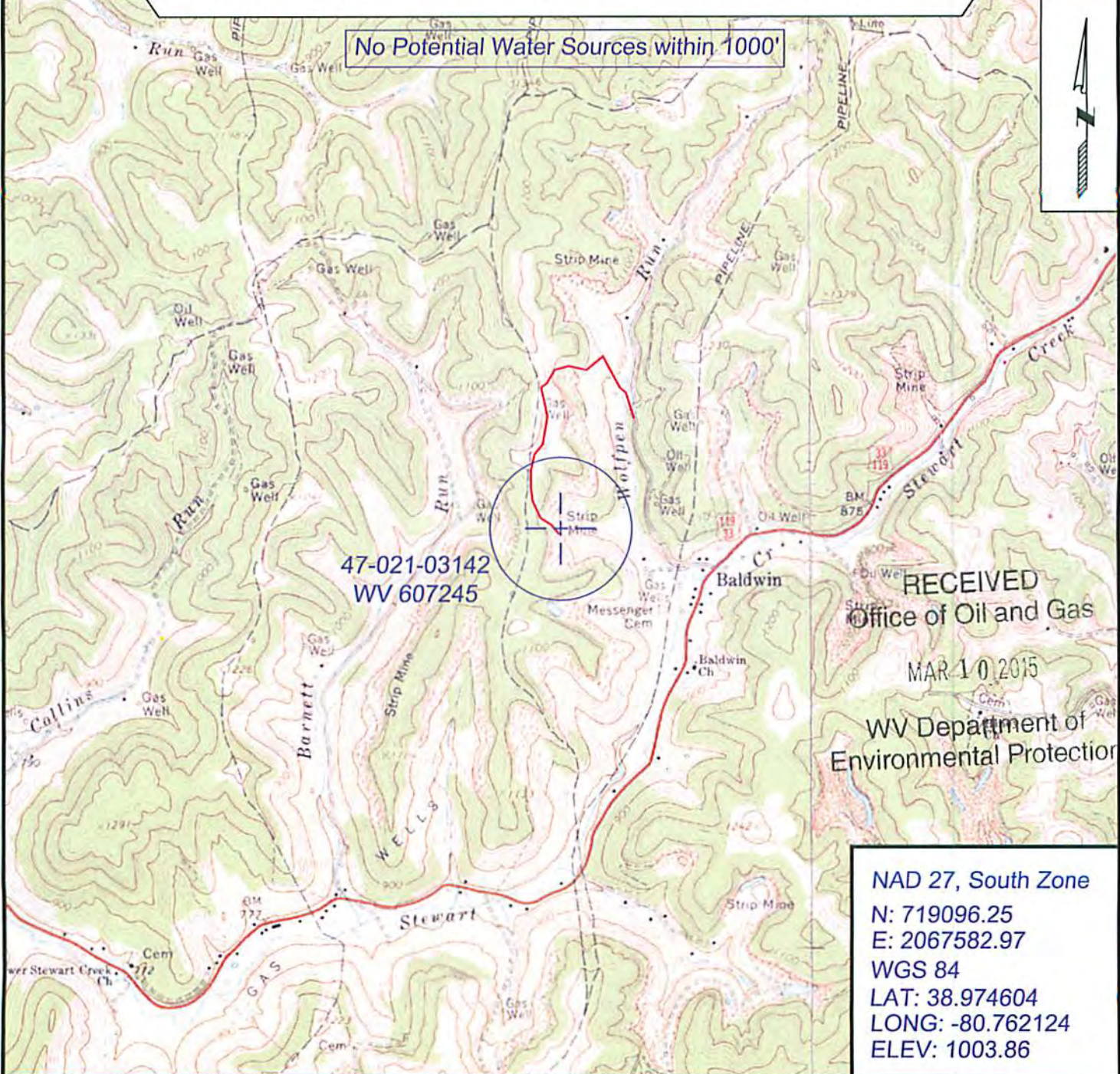
RECEIVED
Office of Oil and Gas
MAR 10 2015
WV Department of
Environmental Protection

2103142P

Topo Quad: Glenville 7.5' Scale: 1" = 2000'
 County: Gilmer Date: February 17, 2015
 District: Glenville Project No: 25-19-00-07

Water

47-021-03142 WV 607245 (C. H. Miles #7245)



No Potential Water Sources within 1000'

47-021-03142
WV 607245

RECEIVED
 Office of Oil and Gas
 MAR 10 2015
 WV Department of
 Environmental Protection

NAD 27, South Zone
 N: 719096.25
 E: 2067582.97
 WGS 84
 LAT: 38.974604
 LONG: -80.762124
 ELEV: 1003.86



SURVEYING AND MAPPING SERVICES PERFORMED BY:
ALLEGHENY SURVEYS, INC.
 1-800-482-8606
 237 Birch River Road
 Birch River, WV 26610
 PH: (304) 649-8606
 FAX: (304) 649-8608

PREPARED FOR:
EQT Production Company
 P.O. Box 280
 Bridgeport, WV 26330