

HOPE NATURAL GAS COMPANY

LOCATION FOR WELL No. *6578*

Instructions *16*

Calhoun

DISTRICT

On *E. L. Collins*
Center

Farm, on waters of *Miles Run*
Galney

District,

County, West Virginia

Lease No. *36213* Acres *51* N. S. *39* E. W. *23*

Scale one inch equals *80 poles* Location made in Pittsburgh *July 21-24* Sent to Clarksburg *July 22-24*

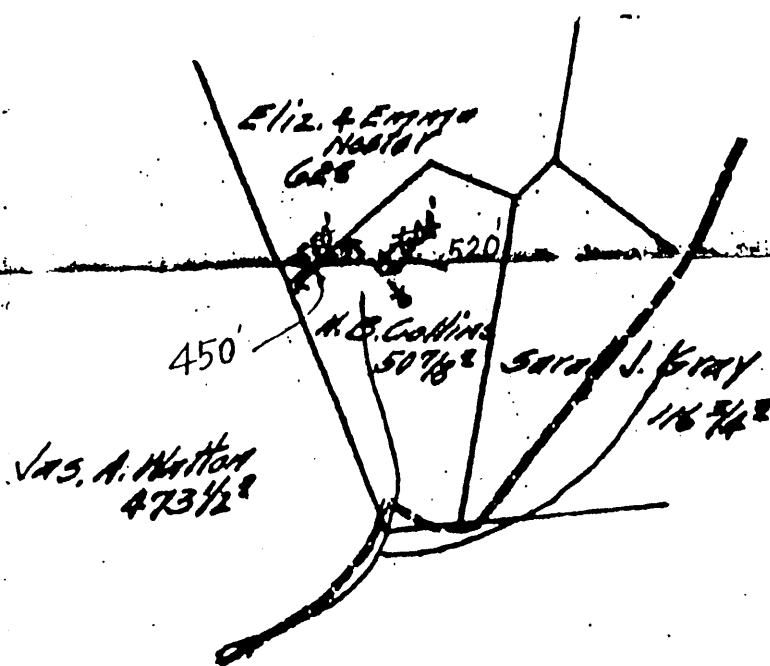
Location to be *600 feet from Eliz. & Emma Nester farm at a point 500 feet from front water corner, then*

Field Book *364*
Well Map SEP 27 24 J.C.L.
Line Map OCT 2 1924 A. J. B.
Sheets SEP 29 1924 H.H.S.

COPY SENT TO PHILADELPHIA COMPANY

021-3089

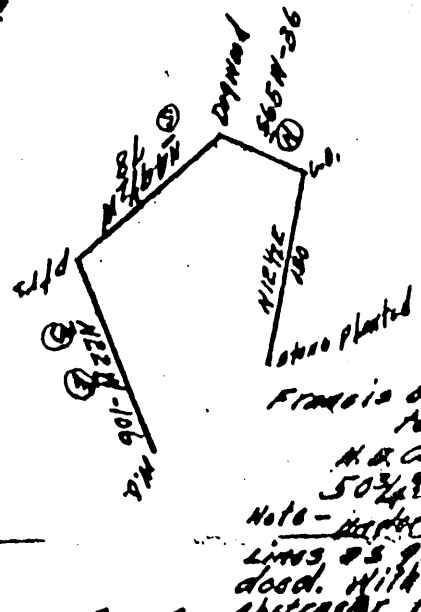
*Provision
in case of
6252*



96

Note: - USE No. (2) TWO STAKE

Field Book 364- Pg. 2
Ref. Points:
S 38 W 15 feet to Stone
S 82-30' E 300 feet to S. W. cor. Dwg.



*Francis & York
to
H.B. Collins
50 7/8
Note - [unclear]
Lines as given
dwd. With [unclear]
[unclear]*

TITLE RESERVE *300 feet around the buildings*

SPECIAL INSTRUCTIONS: COMPLETE WELL ON OR BEFORE *December 6th 1924*

Same Lease on which Located Well No. _____

Location made August 7, 1924 by H. B. Lowther, As per plat, except as noted. On field

August 12, 1924 Returned to Pittsburgh August 12, 1924

Location changed on account of Original loc. came in orchard and on reserve

Authorized by J. B. Corrin, Date August 11, 1924 Signed S. H. Bradley, By- Talley

HOPE NATURAL GAS CO.

RECORD OF

Well No. 6578 Calhoun District
 Located on E. L. Collins Farm
 District Sherman County Calhoun

021-3089

Steel line measurements shall be made of top and bottom of Pittsburgh Coal and all principal sands.

Under remarks note if any of principal sands are not found and any peculiar formation.

If any coal, other than native or Pittsburgh be found, give steel line measurements of top and bottom and nature of coal.

Location Made Aug 7th 1924
 First Work Done Sept 3d 1924
 Commenced Sept 17th 1924
 RIG Completed Oct 2nd 1924

FUEL GAS { Line Completed Oct 7th 1924
 Meter No. 1814 Make #4 Econo

DRILLING { Commenced Oct 17th 1924
 Completed Nov 22th 1924
 (Contractor (If H. N. G. Co. Tools, String No.) 355)

DRILLERS { Perrell M. Boone SIGNATURE
J. E. Taylor SIGNATURE

TOOL DRESSERS { Ott Poling SIGNATURE
O. McCalister SIGNATURE

PUSHER'S NAME P. B. Williams SIGNATURE

Approved by [Signature] FOREMAN

FORM 1670-1M-11-22

FORMATION	OPEN OR CLOSE HARD OR SOFT	TOP	BOTTOM	STEEL LINE MEASUREMENTS	WATER FOUND DEPTH NOTE IF FRESH OR SALT	OIL FOUND DEPTH	GAS FOUND DEPTH	COLOR	REMARKS
MAXON		1760	1802	1800	1780	1800			Salt Black shale
LITTLE LIME		1820	1850						
PENCIL CAVE		1850	1865	1894					
10 LIME		1865	1965				1875		
10 INJUN		1955	2012	1996			1996	2008	
BUAW									Total dept 2022