



Topo Quad: Gilmer 7.5'

Scale: 1" = 2000'

County: Gilmer

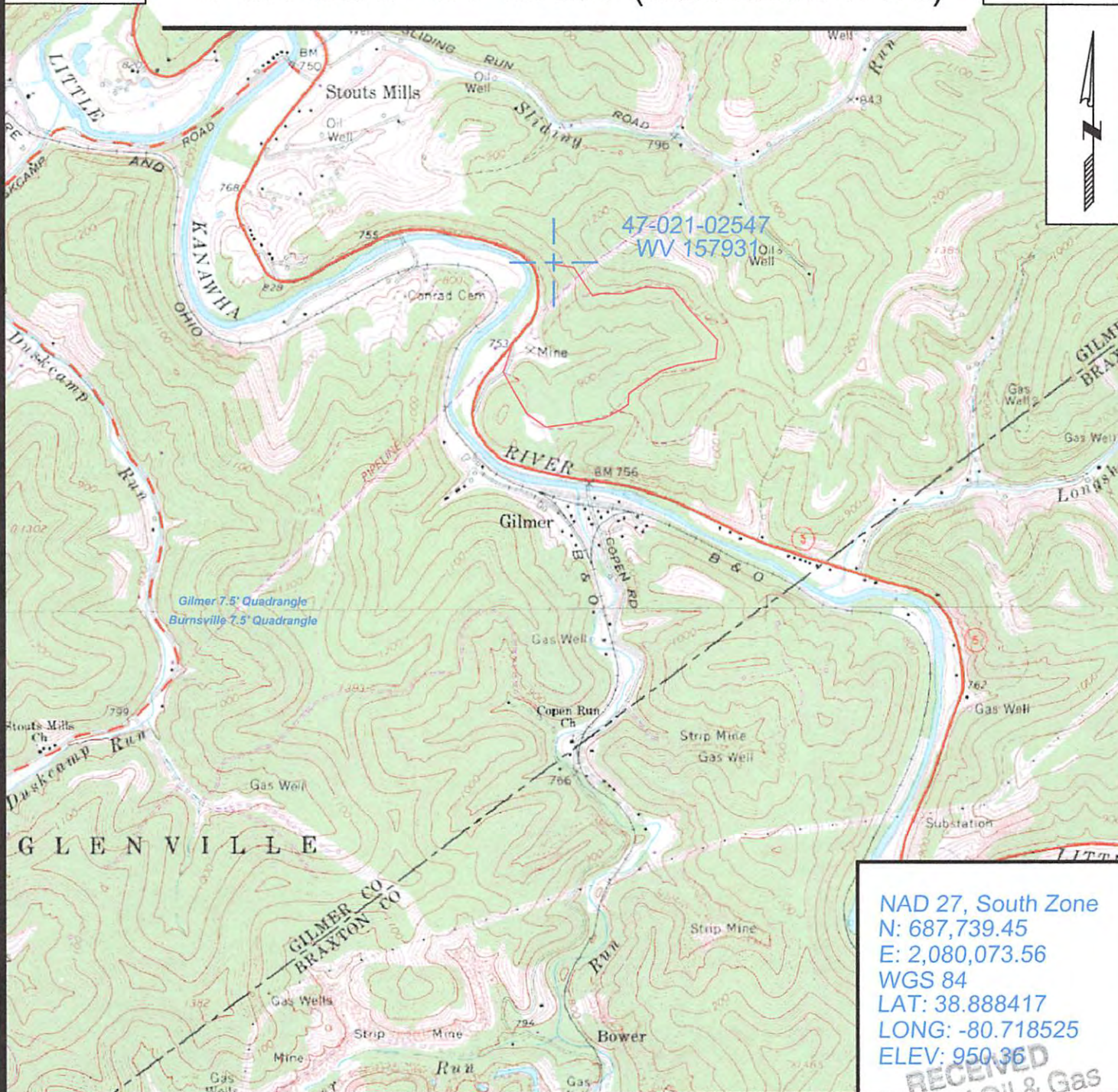
Date: August 22, 2013

District: Glennville

Project No: 25-19-00-07

**47-021-02547 WV 157931 (Marshall #2-W172)**

Topo



NAD 27, South Zone  
 N: 687,739.45  
 E: 2,080,073.56  
 WGS 84  
 LAT: 38.888417  
 LONG: -80.718525  
 ELEV: 950.36



SURVEYING AND MAPPING SERVICES PERFORMED BY:  
**ALLEGHENY SURVEYS, INC.**  
 1-800-482-8606  
 P.O. BOX 438  
 BIRCH RIVER, WV 26610  
 PH: (304) 649-8606  
 FAX: (304) 649-8608

PREPARED FOR:  
**EQT Production Company**  
 P.O. Box 280  
 Bridgeport, WV 26330

RECEIVED  
 Office of Oil & Gas  
 SEP 10 2013  
 WV Department of  
 Environmental Protection