

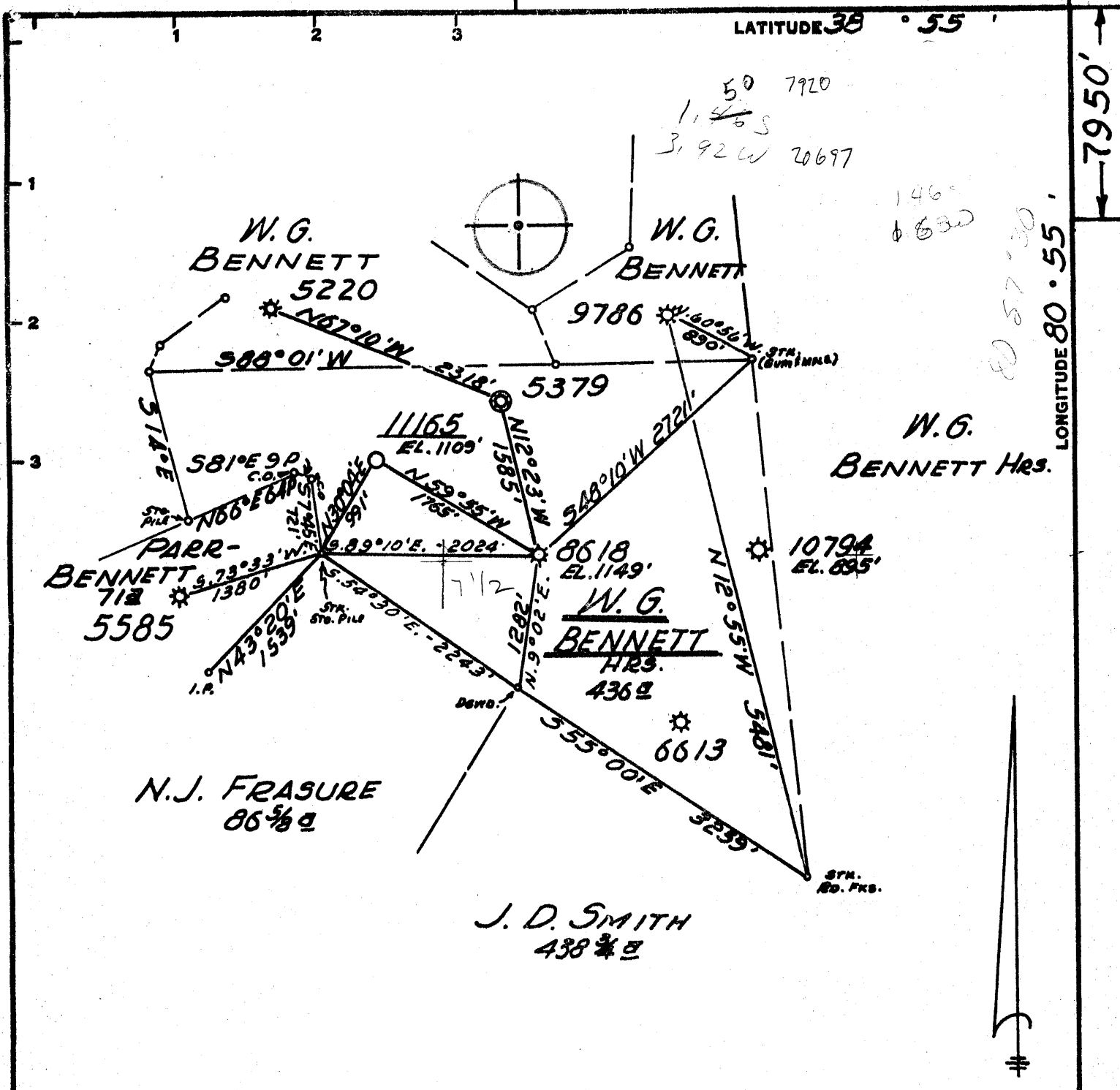
20,350'

11/12/70 C.E.T.

LATITUDE 38° 55'

7950'

LONGITUDE 80° 55'



Minimum Error of Closure 1' IN 200'  
 Source of Elevation LEVELS FROM CONSOLIDATED GAS SUPPLY CORP. WELL 8848 ELV. 911'  
 "I, the undersigned, hereby certify that this map is correct to the best of my knowledge and belief and shows all the information required by paragraph 6 of the rules and regulations of the oil and gas section of the mining laws of West Virginia."

New Location   
 Drill Deeper   
 Abandonment

MAP SHEET 96-538-W22 F.B. 1584 Pg. 28  
 F.B. 1541 Pg. 1-10

Company CONSOLIDATED GAS SUPPLY CORP.  
 Address CLARKSBURG, W. VA.  
 Farm W.G. BENNETT HRS.  
 Tract \_\_\_\_\_ Acres 436± Lease No. 28040  
 Well (Farm) No. \_\_\_\_\_ Serial No. 11165  
 Elevation (Spiri Level) 1109'  
 Quadrangle GLENVILLE W.C.  
 County DEKALB District GILMER  
 Engineer Gay H. Bradley  
 Engineer's Registration No. 24251  
 File No. \_\_\_\_\_ Drawing No. \_\_\_\_\_  
 Date 10-23-69 Scale 1" = 1320'

STATE OF WEST VIRGINIA  
 DEPARTMENT OF MINES  
 OIL AND GAS DIVISION  
 CHARLESTON

WELL LOCATION MAP  
 FILE NO. 611-2130

+ Denotes location of well on United States Topographic Maps, scale 1 to 62,500, latitude and longitude lines being represented by border lines as shown.  
 - Denotes one inch spaces on border line of original tracing.



STATE OF WEST VIRGINIA  
DEPARTMENT OF MINES  
OIL AND GAS WELLS DIVISION

Rotary  XXXXX  
Spudder   
Cable Tools   
Storage

C. NOLL

Quadrangle GLENVILLE

Permit No. GIL-2130

WELL RECORD

Oil or Gas Well Gas  
(KIND)

Company	Consolidated Gas Supply Corporation			Casing and Tubing	Used in Drilling	Left in Well	Packers
Address	Clarksburg, West Virginia			Size			Kind of Packer
Farm	W. G. Bennett	Acres	4.36	16			
Location (waters)				13	18	18	
Well No.	11165	Elev.	1109	10			Size of
District	DeKalb	County	Gilmer	8 1/4	359	359	Depth set
The surface of tract is owned in fee by				6 5/8			
Mineral rights are owned by				5 3/16			
Drilling commenced	12-04-70			4 1/2	2159	2159	Perf. top 2060
Drilling completed	12-08-70			3			Perf. bottom 2077
Date Shot	Not Shot	From	To	2			Perf. top 2083
With				Liners Used			Perf. bottom 2089
Open Flow	/10ths Water in		Inch	Attach copy of cementing record. 18" & 8" to surface			
	/10ths Merc. in		Inch	CASING CEMENTED	SIZE	No. Ft.	Date
Volume	Show		Cu. Ft.	Amount of cement used (bags) 4 1/2" with 130 bags			
Rock Pressure	340	lbs.	1	Name of Service Co.			
Oil	None		bbls., 1st 24 hrs.	COAL WAS ENCOUNTERED AT None FEET INCHES			
WELL ACIDIZED (DETAILS)	No			FEET INCHES FEET INCHES			
WELL FRACTURED (DETAILS)	12-22-70 with 5000 gal. acid, 673 bbl. fluid, 47,000# sand & 25 HHP			FEET INCHES FEET INCHES			
RESULT AFTER TREATMENT (Initial open Flow or bbls.)	<del>696,000 cubic feet</del> 1,704,000			1,704 MCFEPD			
ROCK PRESSURE AFTER TREATMENT	352 #	380 #		<del>14 days</del> 72 HRS			
Fresh Water	100	Feet		Salt Water None Feet			
Producing Sand	Injun			Depth 2060-2089			

Formation	Color	Hard or Soft	Top	Bottom	Oil, Gas or Water	Depth	Remarks
Sand & shale			0	516	water	100'	
Red rock & shale			516	1125			
Sand			1125	1270			
Sand & shale			1270	1383			
1st Salt			1383	1414			
Sand & shale			1414	1615			
2nd Salt			1615	1620			
Sand & shale			1620	1678			
3rd Salt			1678	1760			
Shale			1760	1780			
Maxton			1780	1900			
Little Lime			1900	1920			
Shale			1920	1934			
Big Lime			1934	2010			
Big Injun			2010	2090	gas	2068-89'	
Total Depth				2175			

All measurements taken from KB 4" above GI.

FEB 16 1971



STATE OF WEST VIRGINIA  
DEPARTMENT OF MINES  
OIL AND GAS WELLS DIVISION

Rotary  XXXXX  
Spudder   
Cable Tools   
Storage

C. NOLL

Oil or Gas Well  Gas  
(KIND)

WELL RECORD

Quadrangle GLENVILLE  
Permit No. GIL-2130

Company Consolidated Gas Supply Corporation  
Address Clarksburg, West Virginia  
Farm W. G. Bennett Acres 436  
Location (waters) \_\_\_\_\_  
Well No. 11165 Elev. 1109  
District DeKalb County Gilmer  
The surface of tract is owned in fee by \_\_\_\_\_  
Address \_\_\_\_\_  
Mineral rights are owned by \_\_\_\_\_  
Address \_\_\_\_\_  
Drilling commenced 12-04-70  
Drilling completed 12-08-70  
Date Shot Not Shot From \_\_\_\_\_ To \_\_\_\_\_  
With \_\_\_\_\_  
Open Flow 10ths Water in \_\_\_\_\_ Inch  
10ths Merc. in \_\_\_\_\_ Inch  
Volume Show \_\_\_\_\_ Cu. Ft.  
Rock Pressure 340 lbs. 1 hrs.  
Oil None bbls., 1st 24 hrs.  
WELL ACIDIZED (DETAILS) No  
WELL FRACTURED (DETAILS) 12-22-70 with 5000 gal. acid, 673 bbl. fluid, 47,000# sand & 25 HHP  
RESULT AFTER TREATMENT (Initial open Flow or bbls.) 696,000 cubic feet  
ROCK PRESSURE AFTER TREATMENT 352 # HOURS 14 days  
Fresh Water 100 Feet Salt Water None Feet  
Producing Sand Injun Depth 2060-2089

Casing and Tubing	Used in Drilling	Left in Well	Packers
Size			Kind of Packer
16		18	
13	18	18	
10			Size of
8 1/4	359	359	
6 5/8			Depth set
5 3/16			
4 1/2	2159	2159	
3			Perf. top <u>2060</u>
2			Perf. bottom <u>2077</u>
Liners Used			Perf. top <u>2083</u>
			Perf. bottom <u>2089</u>

Attach copy of cementing record. 18" & 8" to surface  
CASING CEMENTED \_\_\_\_\_ SIZE \_\_\_\_\_ No. Ft. \_\_\_\_\_ Date \_\_\_\_\_  
Amount of cement used (bags) 4 1/2" with 130 bags  
Name of Service Co. \_\_\_\_\_  
COAL WAS ENCOUNTERED AT None FEET \_\_\_\_\_ INCHES  
FEET \_\_\_\_\_ INCHES FEET \_\_\_\_\_ INCHES  
FEET \_\_\_\_\_ INCHES FEET \_\_\_\_\_ INCHES  
WELL FRACTURED (DETAILS) 12-22-70 with 5000 gal. acid, 673 bbl. fluid, 47,000# sand & 25 HHP  
RESULT AFTER TREATMENT (Initial open Flow or bbls.) 696,000 cubic feet  
ROCK PRESSURE AFTER TREATMENT 352 # HOURS 14 days  
Fresh Water 100 Feet Salt Water None Feet  
Producing Sand Injun Depth 2060-2089

Formation	Color	Hard or Soft	Top	Bottom	Oil, Gas or Water	Depth	Remarks
Sand & shale			0	516	water	100'	
Red rock & shale			516	1125			
Sand			1125	1270			
Sand & shale			1270	1383			
1st Salt			1383	1414			
Sand & shale			1414	1615			
2nd Salt			1615	1620			
Sand & shale			1620	1678			
3rd Salt			1678	1760			
Shale			1760	1780			
Maxton			1780	1900			
Little Lime			1900	1920			
Shale			1920	1934			
Big Lime			1934	2010			
Big Injun			2010	2090	gas	2068-89'	
Total Depth				2175			

All measurements taken from KB 4" above GL

FEB 16 1971