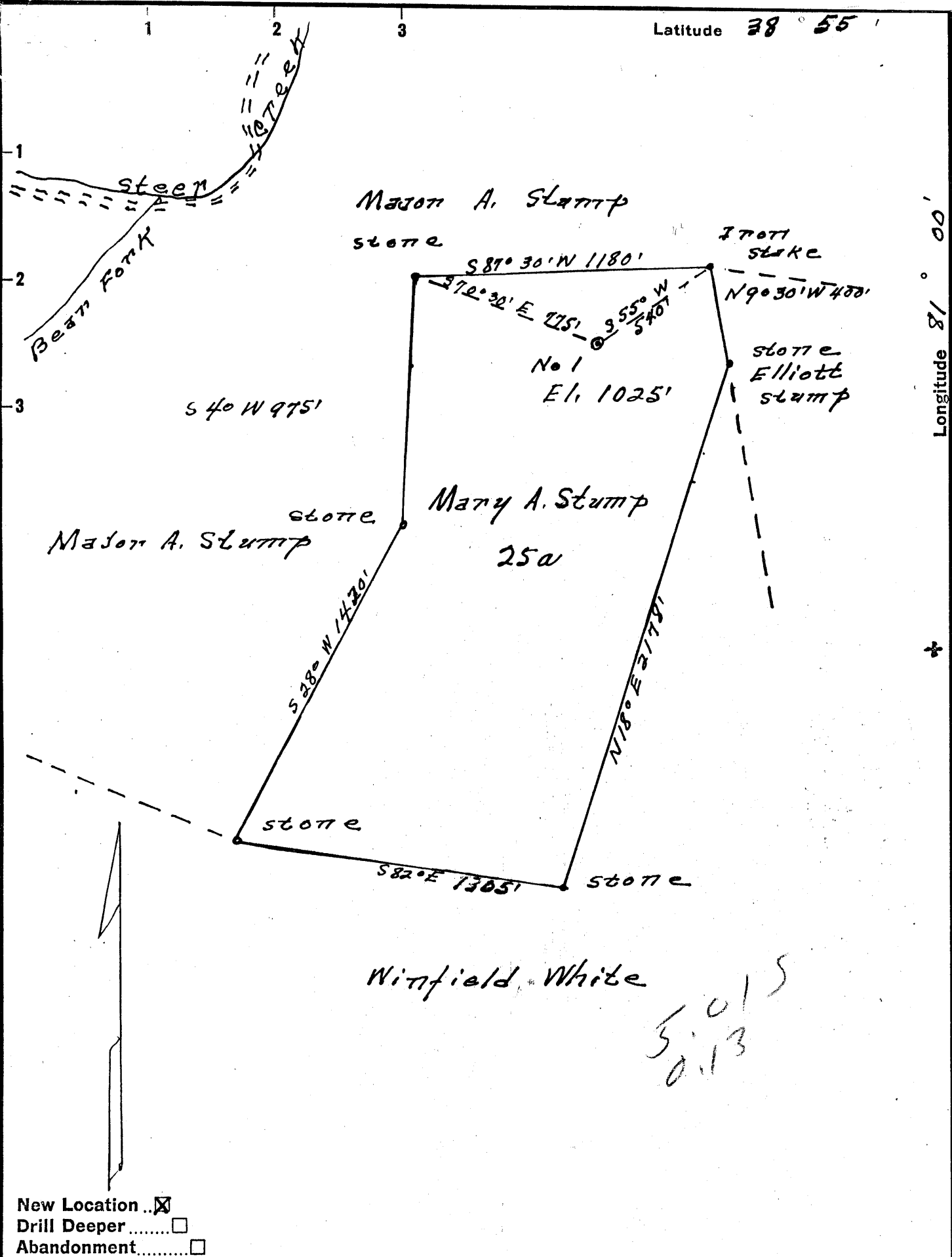


Latitude 38° 55'

Longitude 81° 00'



New Location
 Drill Deeper
 Abandonment

Company Harry Stevens
 Address Grantsville, W. Va.
 Farm Mary A. Stump
 Tract _____ Acres 25 Lease No. _____
 Well (Farm) No. 1 Serial No. _____
 Elevation (Spirit Level) 1025'
 Quadrangle Arnoldsburg
 County Bilmer District Center
 Surveyed by Holly Westcott
 Engineer Donald W. Hanna
 Engineer's Registration No. 1653
 File No. _____ Drawing No. _____
 Date 11/29/56 Scale 1" = 500'

STATE OF WEST VIRGINIA
 DEPARTMENT OF MINES
 OIL AND GAS DIVISION
 CHARLESTON

WELL LOCATION MAP
 FILE NO. GIL-1063

+ Denotes location of well on United States Topographic Maps, scale 1 to 62,500, latitude and longitude lines being represented by border lines as shown.
 - Denotes one inch spaces on border line of original tracing.

5.015
 0.13

180



STATE OF WEST VIRGINIA
DEPARTMENT OF MINES
OIL AND GAS DIVISION 3

Quadrangle Arnoldsburg

Permit No. GIL-1063

WELL RECORD

Oil or Gas Well Gas
(KIND)

Company Harry Stevens
Address Grantsville, West Virginia
Farm Mary A. Stump Acres 25
Location (waters) _____
Well No. 1 Elev. 1025'
District Center County Gilmer
The surface of tract is owned in fee by _____
Address _____
Mineral rights are owned by _____
Address _____
Drilling commenced 12/30/57
Drilling completed 1/29/57
Date Shot _____ From _____ To _____
With _____
Open Flow 13/10ths Water in _____ Inch
2/10ths Merc. in _____ Inch
Volume 561,000 260,000 Cu. Ft.
Rock Pressure 240 lbs. _____ hrs.
Oil _____ bbls., 1st 24 hrs.
WELL ACIDIZED _____
WELL FRACTURED Yes

Casing and Tubing	Used in Drilling	Left in Well	Packers
Size			
16	Conductor	wood	Kind of Packer _____
13			<u>Sandfrac</u>
10			Size of _____
8 3/4	320'	Pulled	
6 3/4	940'	"	Depth set <u>1992'</u>
5 3/16	1895'	<u>1895'</u>	
3			Perf. top _____
2	2019'	2019'	Perf. bottom _____
Liners Used			Perf. top _____
			Perf. bottom _____

CASING CEMENTED _____ SIZE _____ No. Ft. _____ Date _____

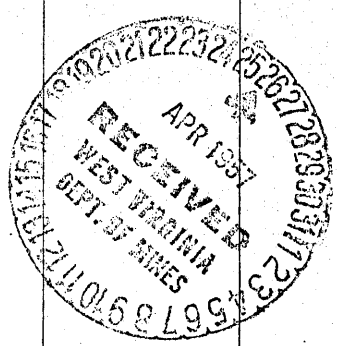
COAL WAS ENCOUNTERED AT _____ FEET _____ INCHES
_____ FEET _____ INCHES _____ FEET _____ INCHES
_____ FEET _____ INCHES _____ FEET _____ INCHES

RESULT AFTER TREATMENT Gas - 260,000 561,000

ROCK PRESSURE AFTER TREATMENT 240 lbs.

Fresh Water 80 Feet 2 bailers per hr Salt Water _____ Feet

Formation	Color	Hard or Soft	Top	Bottom	Oil, Gas or Water	Depth	Remarks
Sand			0	16			
Red rock			16	44			
Slate			44	50			
Sand			50	102			
Slate			102	240			
Sand			240	300			
Slate			300	330			
Sand			330	365			
Slate			365	370			
Red rock			370	375			
Slate and shells			375	405			
Red rock			405	525			
Slate and rock			525	600			
Slate and shells			600	635			
Black slate			635	645			
Slate			645	652			
Pink rock			652	662			
Slate and shells			662	695			
Gritty lime			695	712			
Slate and shells			712	760			
Sand			760	785			
Black slate			785	795			
Slate and shells			795	892			
Sand			892	1008			
Slate and shells			1008	1045			
Sand			1045	1105			
Slate and shells			1105	1134			
Sand			1134	1160			
Slate and shells			1160	1200			



Formation	Color	Hard or Soft	Top	Bottom 3	Oil, Gas or Water	Depth Found	Remarks
Sand			1200	1253			
Slate and shells			1253	1609			
Sand			1609	1672			
Slate			1672	1722			
Maxton sand			1722	1768			
Slate - break			1768	1792			
Maxton sand			1792	1808			
Slate			1808	1816			
Little lime			1816	1848			
Blue Mondat sand			1848	1870			
Slate			1870	1874			
Big lime			1874	1950			
Big Injun			1950	2038			
Total depth				2042			
					2 - 6 bailers	1353'	
					Steel line at	1619'	
					Gas	1615'	1 1/4" W 1" O.F.
					Water 6 bailers	1829'	
					Steel line on 5"	1895'	1910
					5" Bottom Hole packer		Parmico ✓
					Gas	2005 - 2010	2 1/4" W 1" O.F.
					Gas bubble	2023 - 2032	
					Smells oily	2032 - 2038	
					Hole filled back to	2033'	✓
					Hope test after sand fracture - blew open for 4 days, 8 hours each day		✓
					Day test was taken - blew open for 4 1/2 hours		
					This was real good Injun sand from 1996' to 2035'		✓

Date 4-27, 1957

APPROVED _____, Owner
 By Harry Sanders
 (Title)