

2100996 P

Topo Quad: Glenville 7.5'

Scale: 1" = 2000'

County: Gilmer

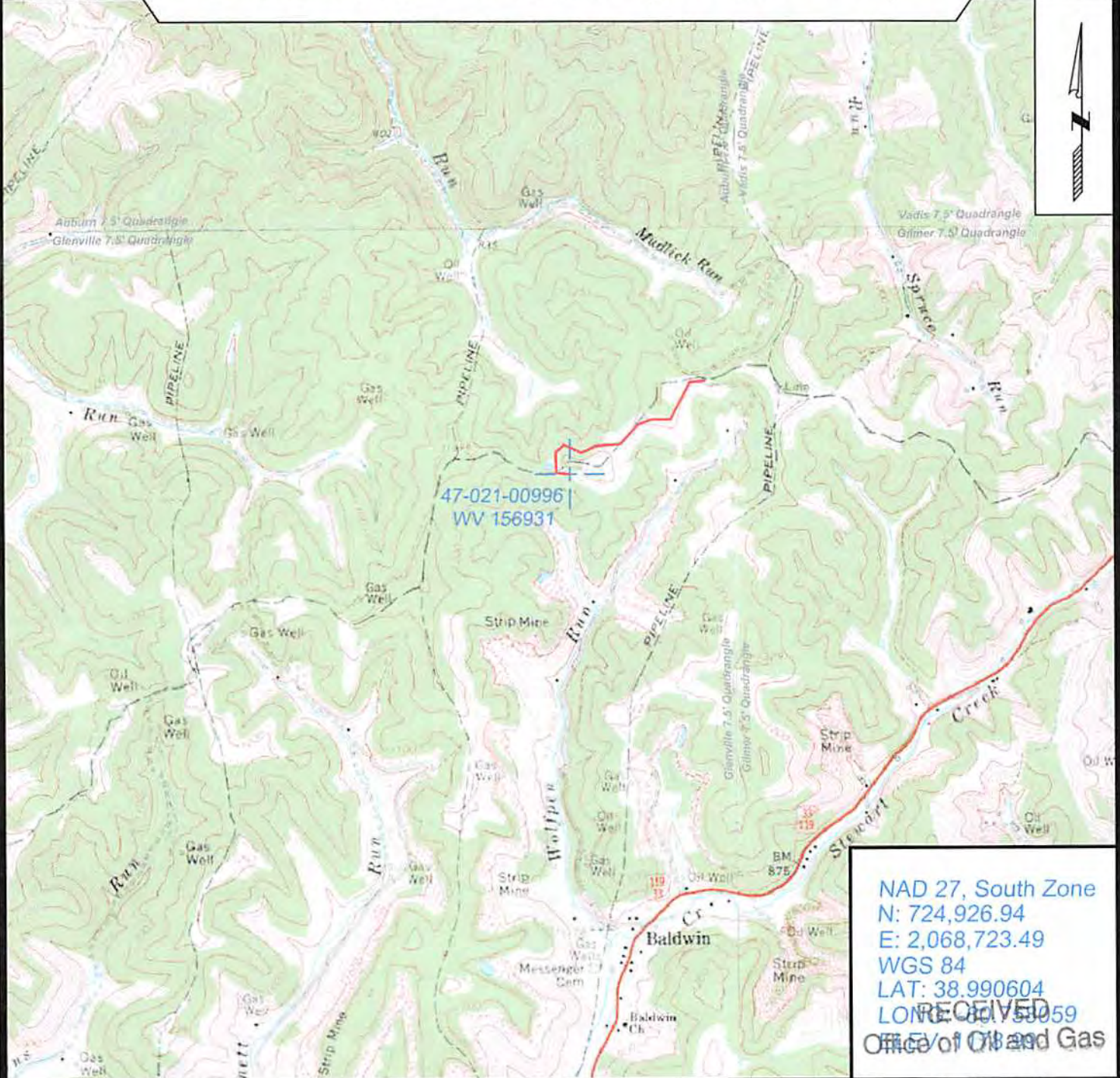
Date: February 13, 2014

District: Glenville

Project No: 25-19-00-07

47-021-00996 WV 156931 (James Well #2)

Topo



NAD 27, South Zone
 N: 724,926.94
 E: 2,068,723.49
 WGS 84
 LAT: 38.990604
 LONG: -80.59059
 RECEIVED
 Office of Oil and Gas



SURVEYING AND MAPPING SERVICES PERFORMED BY:
ALLEGHENY SURVEYS, INC.
 1-800-482-8606
 P.O. BOX 438
 BIRCH RIVER, WV 26610
 PH: (304) 649-8606
 FAX: (304) 649-8608

PREPARED FOR: **EQT Production Company**
 MAR 06 2014
 WV Department of Environmental Protection
 P.O. Box 280
 Bridgeport, WV 26330