

21-00715 P

WW-7  
8-30-06



West Virginia Department of Environmental Protection  
Office of Oil and Gas  
**WELL LOCATION FORM: GPS**

API: 47-021-00715 P WELL NO.: WV 656381 (1624)  
FARM NAME: B. D. Furr  
RESPONSIBLE PARTY NAME: EQT Production Company, Inc.  
COUNTY: Gilmer DISTRICT: Center  
QUADRANGLE: Glenville 7.5'  
SURFACE OWNER: Robert and Joan McKenzie  
ROYALTY OWNER: Betty Dreier Etal  
UTM GPS NORTHING: 4307368  
UTM GPS EASTING: 512516 GPS ELEVATION: 359 m (1179 ft)

The Responsible Party named above has chosen to submit GPS coordinates in lieu of preparing a new well location plat for a plugging permit or assigned API number on the above well. The Office of Oil and Gas will not accept GPS coordinates that do not meet the following requirements:

1. Datum: NAD 1983, Zone: 17 North, Coordinate Units: meters, Altitude: height above mean sea level (MSL) – meters.
2. Accuracy to Datum – 3.05 meters
3. Data Collection Method:  
Survey grade GPS  : Post Processed Differential   
Real-Time Differential   
Mapping Grade GPS  : Post Processed Differential   
Real-Time Differential
4. Letter size copy of the topography map showing the well location.

I the undersigned, hereby certify this data is correct to the best of my knowledge and belief and shows all the information required by law and the regulations issued and prescribed by the Office of Oil and Gas.

Ben R. Sengler  
Signature  
11/5/2010  
Date

P.S. 2092  
Title

71-00715

Topo Quad: Glenville

Scale: 1" = 2000' 21-00715P

County: Gilmer

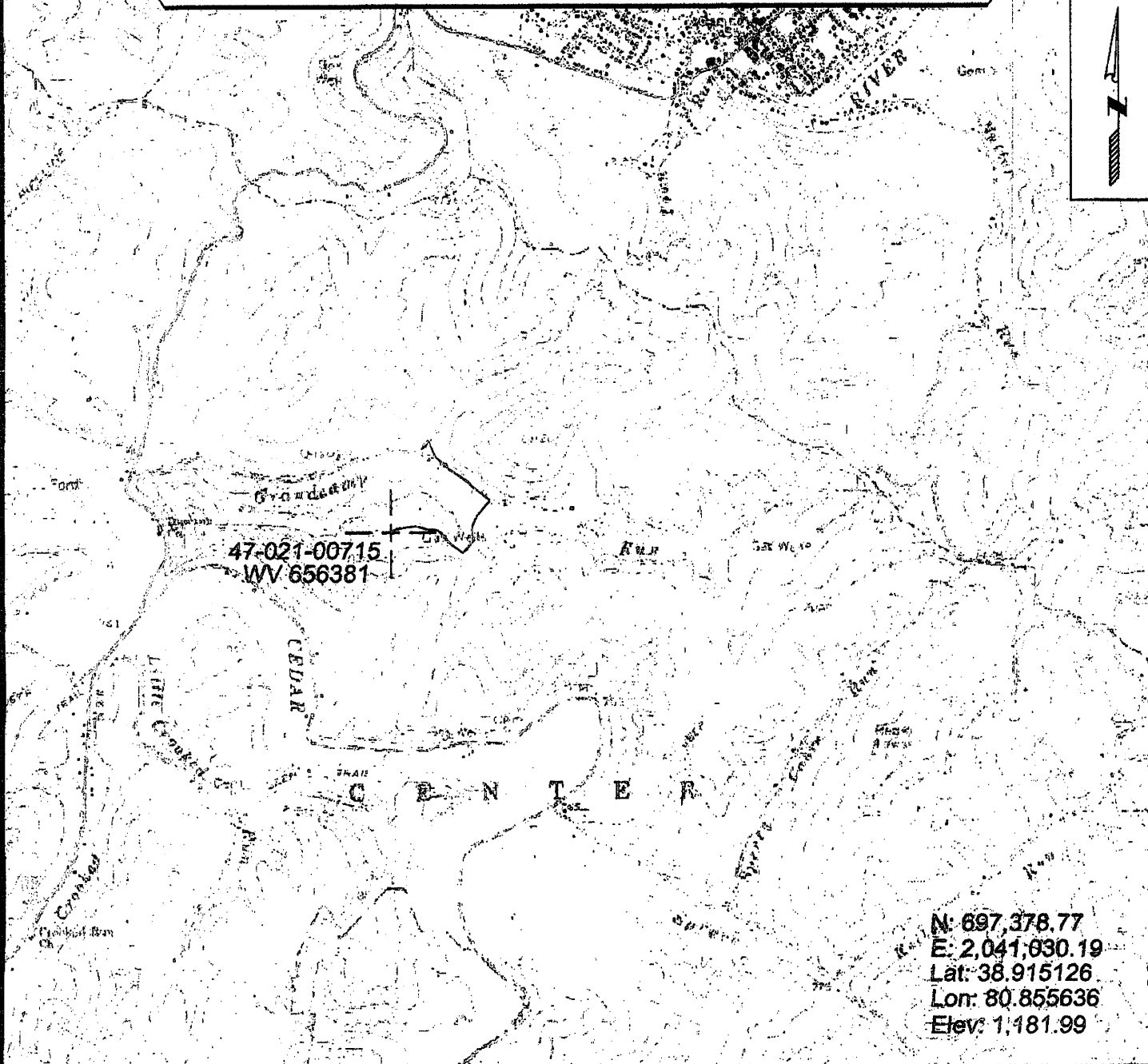
Date: Jan 11, 2012

District: Center

Project No: 25-19-00-07

47-021-00715 (WV 656381)

Topo



47-021-00715  
WV 656381

N: 697,378.77  
E: 2,041,930.19  
Lat: 38.915126  
Lon: 80.855636  
Elev: 1,181.99

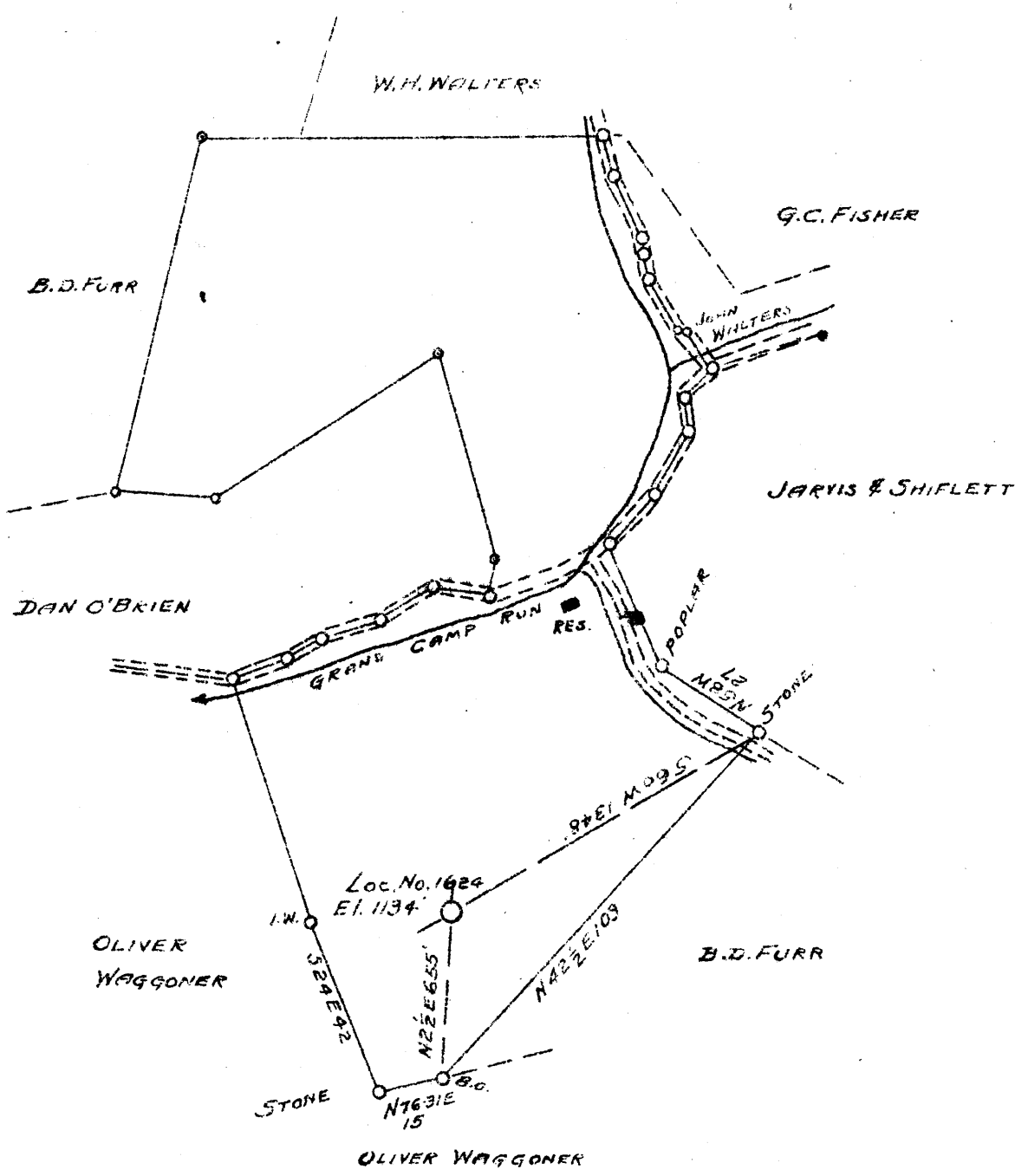


SURVEYING AND MAPPING SERVICES PERFORMED BY:  
**ALLEGHENY SURVEYS, INC.**  
 1-800-482-8606  
 P.O. BOX 438  
 BIRCH RIVER, WV 26610  
 PH: (304) 649-8608  
 FAX: (304) 649-8608

PREPARED FOR:  
**EQT Production Company**  
 1710 Pennsylvania Ave.  
 Charleston, WV 25302

Latitude 38 55

Longitude 80 50



New Location X  
 Drill Deeper  
 Abandonment

Company CARNEGIE NATURAL GAS CO.  
 Address PITTSBURGH, PA.  
 Farm B.D. FURR  
 Tract \_\_\_\_\_ Acres 118 Lease No. E. 5224-19  
 Well (Farm) No. 1 Serial No. 1624  
 Elevation (Spirit Level) 1134'  
 Quadrangle GLENVILLE N.E. 14  
 County GILMER District CENTER  
 Engineer D.T. BRITTON  
 Engineer's Registration No. \_\_\_\_\_  
 File No. \_\_\_\_\_ Drawing No. \_\_\_\_\_  
 Date 9-24-45 Scale 1" = 40 RODS.

STATE OF WEST VIRGINIA  
 DEPARTMENT OF MINES  
 OIL AND GAS DIVISION  
 CHARLESTON

**WELL LOCATION MAP**  
 FILE NO. GIL 715

+ Denotes location of well on United States Topographic Maps, scale 1 to 62,500, latitude and longitude lines being represented by border lines as shown.

- Denotes one inch spaces on border line of original tracing

✓

WEST VIRGINIA DEPARTMENT OF MINES  
OIL & GAS DIVISION  
W E L L R E C O R D

Permit No. Gil 715  
Glenville Quad.

Gas Well  
CASING & TUBING

Company	Carnegie Natural Gas Company			
Address	1015 Frick Bldg., Pittsburgh, Pa.	10	151	151
Farm	B.D. Furr Acres 118	8½	981	981
Location	Grand Camp Run	6 5/8	1919	1919
Well No.	1-1624 Elev. 1134			
District	Center Gilmer County			Bottom Hole Packer
Surface	B.D. Furr, Glenville, W.Va.			Size 8½ x 10"-
Mineral	Same			6 5/8 x 8½
Commenced	Dec. 13, 1945			981' 1919'
Completed	Jan. 22, 1946			
Date shot	1-23-46 Depth 2028 to 2042			
Open flow	with 60 qts. Rock Tamp			
Volume	40/10ths W in 1"			
Rock Pressure	66,660 C.F.			
Fresh Water	455 lbs. 72 hrs.			
Salt Water	320'			
	1170'			

Red Rock	S	0	5	Red Rock	S	1815	1823
Sand	H	5	45	Slate Dk	S	1823	1835
Red Rock	S	45	90	Little Lime Lt	H	1835	1865
Sand Lt	H	90	150	Slate Lt	S	1865	1881
Red Rock	S	150	200	Big Lime	H	1881	1940
Sand Lt	H	200	240	Big Injun Sand	H	1940	2043
Red Rock	S	240	280	Slate Lt	S	2043	
Slate Lt	S	280	330	Total depth			2064
Red Rock	S	330	360	Show gas 1490'			
Slate Wh	S	360	375	Show gas 2004' Big Lime			
Red Rock	S	375	480	Gas 2030-40 Big Injun Sand			
Slate Lt	S	480	500				
Lime Wh	H	500	515				
Slate Wh	S	515	535				
Red Rock	S	535	555				
Slate Lt	S	555	615				
Red Rock	S	615	645				
Slate Wh	S	645	715				
Sand Wh	H	715	730				
Slate Wh	S	730	745				
Sand, L. Dunk. Wh	H	745	775				
Slate Dk	S	775	795				
Slate Lt	S	795	800				
Sand Lt	H	800	843				
Slate Dk	S	843	870				
Sand, B. Dunk. Lt	H	870	915				
Slate Dk	S	915	953				
Lime Dk	H	953	965				
Gas Sand Wh	H	965	995				
Slate Dk	S	995	1040				
1st Salt Sand Lt	H	1040	1055				
Slate Bk	S	1055	1060				
1st Salt Sand Wh	H	1060	1111				
Slate Dk	S	1111	1165				
Sand Dk	H	1165	1190				
Slate Dk	S	1190	1225				
Sand, 2nd Salt	H	1225	1255				
Slate Bk	S	1255	1408				
Lime Wh	H	1408	1420				
Sand Wh	H	1420	1435				
Slate Wh	S	1435	1488				
Sand Wh	H	1488	1518	show gas 1490' 3rd Salt Sand			
Slate Dk	S	1518	1524				
Sand Wh	H	1524	1596	4th Salt Sand			
Slate Dk	S	1596	1675				
Sand Wh	H	1675	1690				
Slate Black	S	1690	1715				
Lime Dk	H	1715	1723				
Sand Wh	H	1723	1742	Maxon			
Slate Lt	S	1742	1755				
Red Rock	S	1755	1760				
Slate Red	S	1760	1815				

1881  
1022  
1043  
1134  
1909