

WW-7
8-30-06



West Virginia Department of Environmental Protection
Office of Oil and Gas
WELL LOCATION FORM: GPS

API: 47-021-00684 WELL NO.: WV 656346 (Whiting #1616)

FARM NAME: Lee R. Whiting

RESPONSIBLE PARTY NAME: EQT Production Company

COUNTY: Gilmer DISTRICT: Dekalb

QUADRANGLE: Tanner 7.5'

SURFACE OWNER: Deborah J. Dobbins (Thelma V. Brady-Life Estate)

ROYALTY OWNER: Lee R. Whiting, et. al.

UTM GPS NORTHING: 4309831

UTM GPS EASTING: 508029 GPS ELEVATION: 227 m (745 ft)

The Responsible Party named above has chosen to submit GPS coordinates in lieu of preparing a new well location plat for a plugging permit or assigned API number on the above well. The Office of Oil and Gas will not accept GPS coordinates that do not meet the following requirements:

- Datum: NAD 1983, Zone: 17 North, Coordinate Units: meters, Altitude height above mean sea level (MSL) – meters.
- Accuracy to Datum – 3.05 meters
- Data Collection Method:
Survey grade GPS : Post Processed Differential
Real-Time Differential
Mapping Grade GPS X: Post Processed Differential X
Real-Time Differential

RECEIVED

Office of Oil and Gas

MAY 27 2014

WV Department of
Environmental Protection

4. **Letter size copy of the topography map showing the well location.**

I the undersigned, hereby certify this data is correct to the best of my knowledge and belief and shows all the information required by law and the regulations issued and prescribed by the Office of Oil and Gas.


Signature

PS # 2180
Title

4/25/14
Date

Topo Quad: Tanner 7.5'

Scale: 1" = 2000'

County: Gilmer

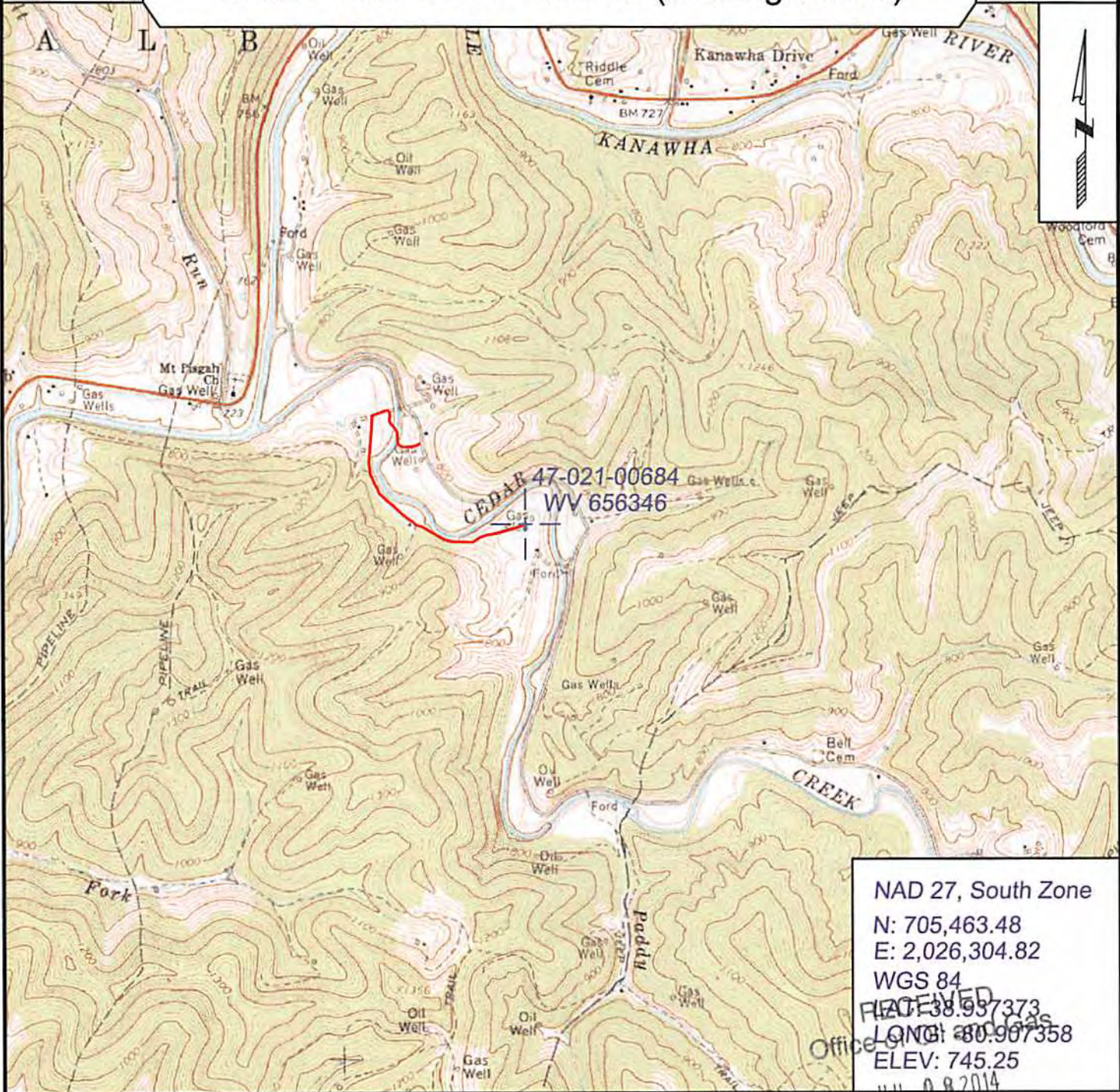
Date: April 16, 2014

District: Dekalb

Project No: 25-19-00-07

47-021-00684 WV 656346 (Whiting #1616)

Topo



NAD 27, South Zone
 N: 705,463.48
 E: 2,026,304.82
 WGS 84
 RECEIVED
 LONGI 38.937373
 LONGI 80.967358
 ELEV: 745.25
 JUL 08 2014

PREPARED FOR:

EQT Production Company
 Department of Environmental Protection
 Bridgeport, WV 26330

SURVEYING AND MAPPING SERVICES PERFORMED BY:

ALLEGHENY SURVEYS, INC.

1-800-482-8606
 237 Birch River Road
 Birch River, WV 26610
 PH: (304) 649-8606
 FAX: (304) 649-8608

