

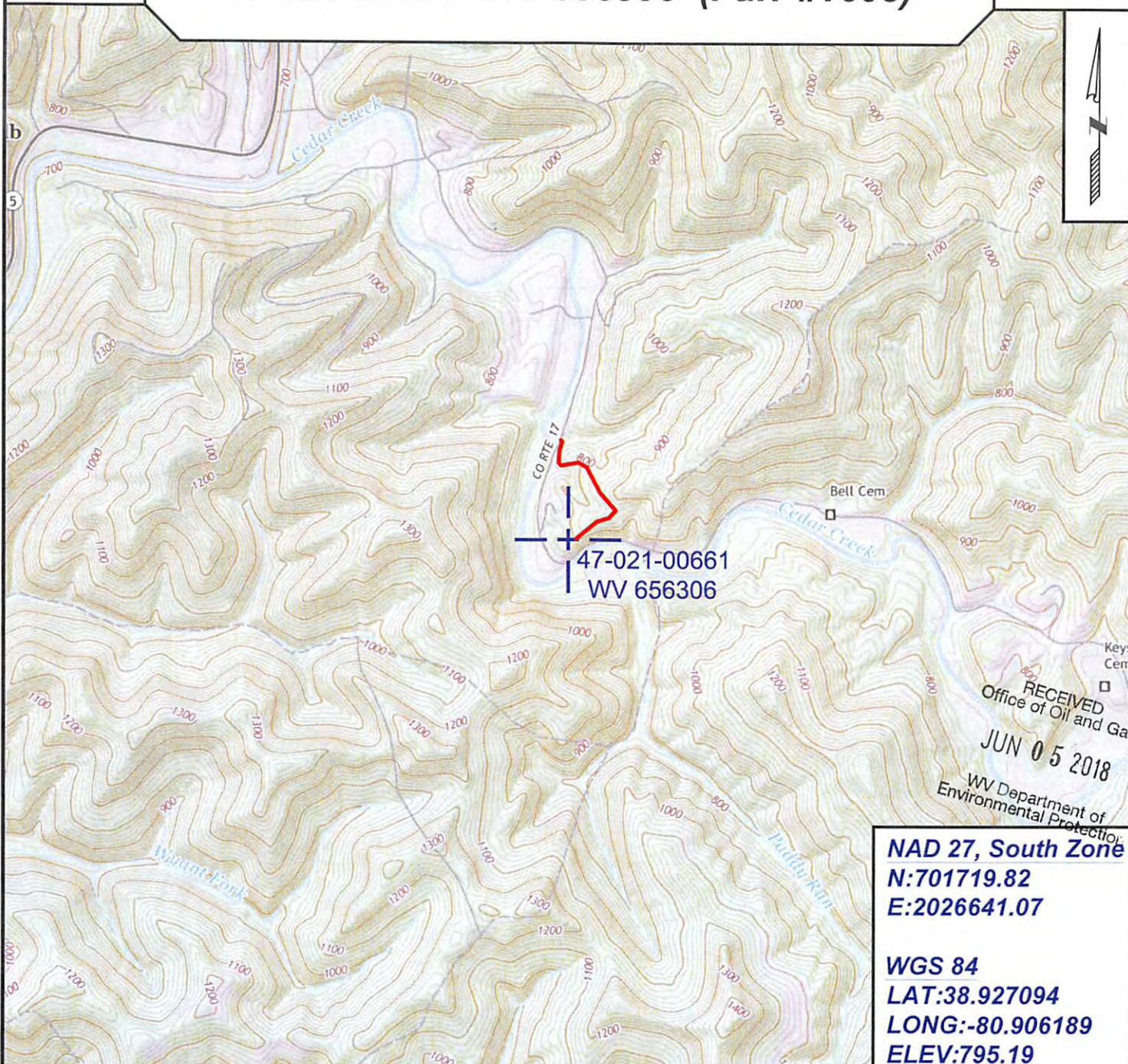




Topo Quad: Tanner 7.5'	Scale: 1" = 2000'
County: Gilmer	Date: March 15, 2018
District: DeKalb	Project No: 25-19-00-07

# 47-021-00661 WV 656306 (Furr #1603)

Topo



**NAD 27, South Zone**  
**N:701719.82**  
**E:2026641.07**

**WGS 84**  
**LAT:38.927094**  
**LONG:-80.906189**  
**ELEV:795.19**



SURVEYING AND MAPPING SERVICES PERFORMED BY:

## ALLEGHENY SURVEYS, INC.

1-800-482-8606  
 237 Birch River Road  
 Birch River, WV 26610  
 PH: (304) 649-8606  
 FAX: (304) 649-8608

PREPARED FOR:

## EQT Production Company

P.O. Box 280  
 Bridgeport, WV 26330