

- New Location
- Drill Deeper
- Abandonment

Samples 26-D
50-6300' = INT.

Map Sheet 96-Square S41W22 FB737 P15,24-25

Company	HOPE NATURAL GAS CO.	
Address	CLARKSBURG, W.VA.	
Farm	SUSAN STUMP	
Tract	Acres 200	Lease No. 19863
Well (Farm) No.	4	Serial No. 8655
Elevation (Spirit Level)	797'	760'
Quadrangle	GLENVILLE - WC	
County	GILMER	District CENTER
Engineer	W.M. Bowers	
Engineer's Registration No.	900	
File No.	Drawing No.	
Date	Apr. 21, 1943	Scale 1" = 40'

STATE OF WEST VIRGINIA
DEPARTMENT OF MINES
OIL AND GAS DIVISION
CHARLESTON

WELL LOCATION MAP
FILE NO. GIL-587

- + Denotes location of well on United States Topographic Maps, scale 1" to 62,500, latitude and longitude lines being represented by border lines as shown.
- Denotes one inch spaces on border line of original tracing.

WEST VIRGINIA DEPARTMENT OF MINES
OIL & GAS DIVISION
W E L L R E C O R D

Permit No. Gil 587
Glenville Quad.
Company
Address
Farm
Location
Well No
District
Surface
Mineral
Commenced
Completed
Not shot
Fresh Water

Hope Natural Gas Company
445 W. Main St., Clarksburg, W.Va.
Susan Stump Acres 200
Steer Creek
8655 Elev. ~~797~~ 760'
Center Gilmer County
O.A. Collins, Lockney, W.Va.

Dry Hole
CASING & TUBING

	16	181	181
	13	562	662
	10	1562	1562
	8 1/2	3151	3151
	6 5/8	5900	5900

May 24, 1943
Oct. 19, 1943

Casing cemented 7-
bottom

No coal

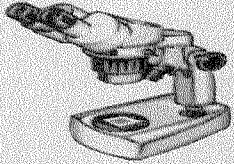
135'; 558 (Salt), 1469-Salt and
3010; 6100-6104

Soil	0	10	Lime	Gritty	2888	2913
Shell Gr	10	32	Lime	Dk	2913	2965
Red Rock	32	38	Slate Shells	Gr	2965	3005
Slate Shells Gr	38	73	Lime	Gritty	3005	3031
Red Rock	73	80	Slate Shells		3031	3139
Slate Shells Gr	80	105	Lime Shells		3139	3207
Slate R	105	114	Lime	Gritty	3207	3255
Sand Gr	114	129	Slate, Shells, Lime	Gr	3235	4309
Slate Shells Dk	129	143	Slate & Lime Shells		4309	4325
Lime Gr	143	148	Lime	Gr	4325	4415
Slate Shells	148	154	Slate & Sand Shells		4445	4536
Slate R	154	175	Lime	Gr	4536	4550
Lime Gr	175	185	Slate & Shells		4550	4580
Slate Red	185	200	Lime	Gritty	4580	4608
Slate Bl	200	210	Slate & Lime Shells		4608	5002
Lime Broken	210	220	Lime	D. Gray	5002	5033
Slate Red	220	250	Slate & Shells		5033	5079
Lime	250	268	Shale & Lime Shells		5079	5108
Lime Broken	268	290	Lime	Dk	5108	5125
Slate R and Gr	290	360	Slate & Lime Shells		5125	5148
Lime Broken	360	381	Lime	Gr	5148	5170
Slate R	381	390	Slate Shells Dk		5170	5265
Slate, Lime Gr and Gritty	390	475	Lime	Dk	5265	5287
Slate R	475	479	Slate & Lime Shells Gr		5287	5405
Lime, Slate, shells Gr, Broken	479	506	Shale	Br	5405	5440
Little Dunkard Gr	506	520	Lime	Dk	5440	5471
Slate Gr	520	550	Shale & Shells		5471	5490
Gritty Lime	550	570	Broken Lime		5471	5503
Big Dunkard	570	668	Shale & Lime Shells Br		5503	5577
Slate Dk	668	735	Shale	Bk	5577	5588
Gas Sand	735	933	Shale	Br	5588	5620
Slate Dk	933	992	Lime	Gr	5620	5690
First Salt Lime	992	1013	Slate Shells		5690	5707
Slate, Lime Dk H	1013	1119	Shale		5707	5806
Second Salt Brown	1119	1146	Shale Macellus Bk		5806	5878
Slate Shells, Lime Gr	1146	1259	Corniferous Lime		5878	6081
Third Salt	1259	1375	Oriskany		6081	6156
Slate, Lime Gr	1375	1415	Lime ^{held} Dk		6156	6226
Maxon Lt Gr	1415	1478	Lime, Gritty Gray		6226	6278
Slate, Shells	1478	1505	Sandy Lime Gray		6278	6286
Little Lime	1505	1525	Lime Gray		6286	6302
Slate & Shells	1525	1534				
Lime Gr	1534	1537	TOTAL DEPTH		495	6302
Pencil Cave	1537	1548				
Big Lime	1548	1623	Show gas 440; 470; 508; 558; 790; 1350;			
Big Injun	1623	1718	Gas 1418-1424; show gas 3143			
Slate & Shells	1718	1777				
Lime Gritty	1777	1806				
Slate Shells	1806	1950				
Lime Dk	1950	1980				
Slate Shells Gr	1980	2130				
Sand Berea	2130	2149				
Slate, Shells, Lime Dk	2149	2492				
Sand Shells Br	2492	2499				
Slate, Shells Gr	2499	2888				

5081
760
321
1114
935

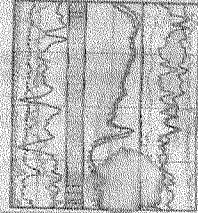
sample study
1718
797
1718
548
170
1714
797
917

2130
760
2023
760



R.J Yedlosky
 Consulting Engineering-Geologist
 Rt 8 Box 336-AA
 Fairmont, WV 26554

RESERVOIR EVALUATION



PHONE & FAX 304-366-9572 E-MAIL rvjedlosky@adelphia.net

STRIP LOG

STATE West Virginia COUNTY & PERMIT NO. Gilmer #587 DIST. OR TWP Center

QUAD Glenville WC LOC. 5.1 Mi S of 38° 55' 3.9 Mi W of 80° 55'

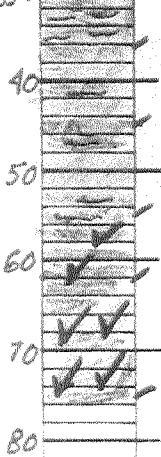
COMPANY Hope Natural Gas Co. FARM Susan Stump WELL # 8655

TD 6300' B.H. FORM. Helderberg COMM. 5/24/43 COMPL. 10/19/43

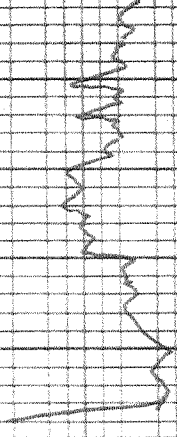
PRODUCTION Salt Water R.P. _____ DATE SPL LOG 7/7/03

ELEVATION 797 KB 803 CASING RECORD _____

DEPTH	LITHOLOGY	ESTIMATED VISUAL ϕ	COMPOSITION	GRAIN/XL SIZE (mm)	ESTIMATED GAMMA RAY	FLUORESCENCE	REMARKS
20		10					
15		5					



1575



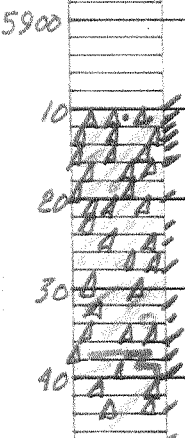
Blk carbon sh w/ 1% brn calc. laminae w/ micae foss.

AA but more lt brn foss calc lam.

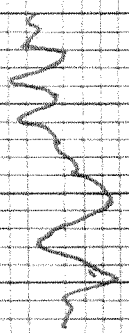
Mostly blk carbon sh w/ less brn calc & very fine pyrite

Blk carbon sh w 15% lt brn calc zones & 15% fine pyrit w/ calc. cement
Trace clean chert.

ONONDAGA 5
ONONDAGA



85 510
90 510
95 510
100 510
70 510
60 510
50 510



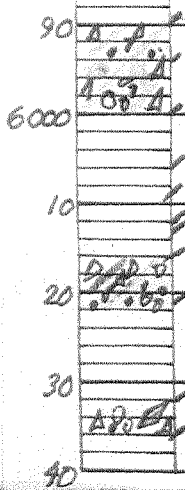
Clear to cloudy specular chert, several aggregates of well sp. held by rust. Feet d. in phenom.
lt brn impure calc chert
Clear to lt brn impure calc. chert

Clear to brn impure calc chert. Rust held aggrs
more numerous
Brn impure calc chert

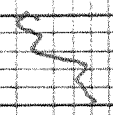
Very impure calc silty argill chert
Clean to impure calc chert

Calc chert w/ abund blk organic mat
back to cleaner calc. chert

Skip to 6000



85 510
90 510
95 510
100 510



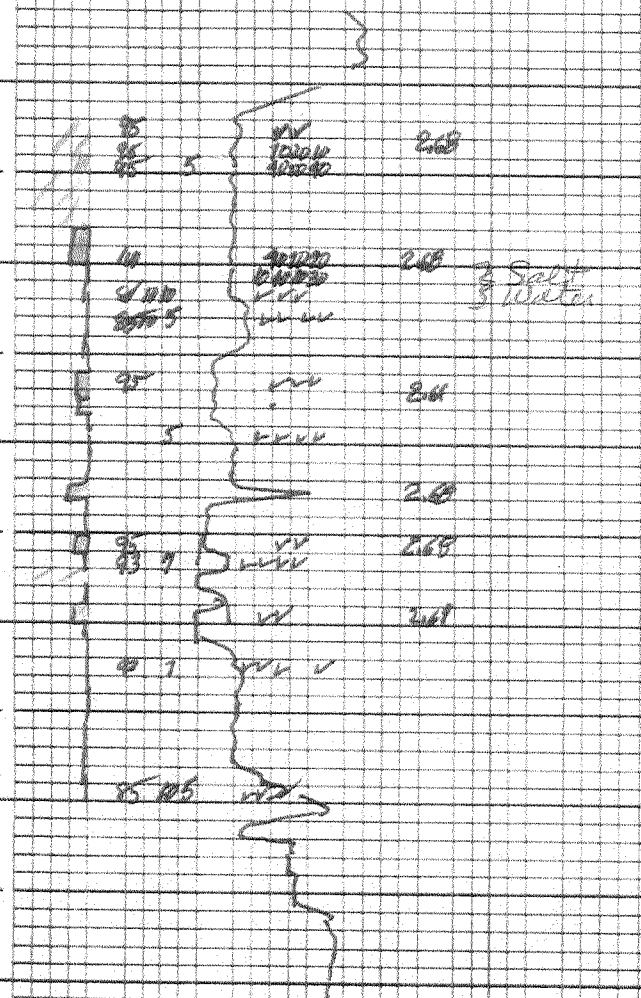
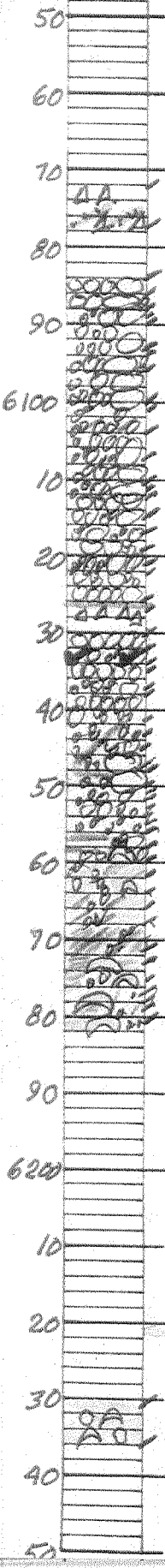
Calc. sil impure chert w
color f. 50

Brn impure calc. chert &
chert gry impure sdy chert

Skip to 16-21

Drk gry v. impure sdy chert & cherty sil less Calc.

Impure cherty sil & sdy chert w large spon. det. sil



Impure chert to dark gray cherty silt

Loose sd grains, semi round, no D
 Some fine sd silt (few aggregates) 3-4% f
 Loose med f → v fine semi round sd
 Loose f broken sd, semi round, no D few aggregates
 3-5% f in aggregates
 Tight poor sort aggregate
 Poor sort argill tight sand

5% better sort w/ 3-4% f
 Poor sort argill tight silt

Tight to sli & aggregates mostly loose ground
 blk sh to wnt opaque chert. grains floating
 cause
 sd aggregates med w/ sli f
 Very poor sort argill tight sd, med v
 some sd
 Poor sort to argill of semi round
 Tight poor sort sd few sli & aggregates
 Tight poor sort argill

Poor sort blk argill w/ blk silt stringed
 Finer grain blk argill sd tight

Poor sort blk argill sd w/ float foss
 Dark gray, fine, fine sd of calc foss blk sh
 Calc. sh. to sandy foss foss
 Dirty calc. sd & sh

blk foss sh
 dark gray dirty sdy silt w/ leg foss.

NO SPLS

Clean sli sdy foss sh

60
50
40
30
20
10
0

sky jumps to catch next set

45

2.6

clean set up

70

80

90

6300

10

SUSAN STUMP NO. 4 (8655) WELL

Center District, Gilmer County, W. Va.
 By Hope Natural Gas Co., Clarksburg, W. Va.
 Located 5.10 mi. S. of 38° 55' and 3.90 mi. W. of 80° 55'
 Glenville Quadrangle, WC
 Elevation, 797' L.
 Permit-Gil.-587.

Drilling commenced May 24, 1943; completed Oct. 19, 1943. Gas shows:
 440; 470; 508; 790; 1350; 1418-1424; 3143'.

Salt water: 558; 1469; 3010; 6100-6104'.

Section based on samples from 5836' to 6082'.

Examined by Russell R. Flowers.

	Top	Bottom	Thickness	
40	5836'	5875'	39'	Shale, brownish black to black, very highly carbonaceous, pyritic in part, calcareous in part; some brownish-gray to brownish-black shaly limestone in the upper part.
HUNTERSVILLE CHERT, 204 feet				
50	5878	5910	32	No sample (corniferous lime 5878 to 6081- from driller's log)
60	5875	5878	3	No sample.
70	5910	5925	15	Limestone (cherty) brownish-gray to brownish-black, to chert, white to light gray.
80	5925	5934	9	Chert, light to medium gray to a calcareous chert, brownish-gray to brownish-black (shaly)
90	5934	5936	2	Chert, medium-gray, calcareous, some dark gray to brownish-black, lightly dolomitic shaly chert.
100	5936	5944	8	Chert, white to light-gray, calcareous to a highly calcareous, shaly chert, brownish-gray to brownish-black.
110	5944	5947	3	Chert, light- to medium-gray, calcareous, somewhat dolomitic; trace of glauconite.
120	5947	5952	5	Chert, medium-gray to brownish-gray and brownish-black, some light-gray, highly calcareous, dolomitic, sandy and silty somewhat glauconitic.
130	5962	5965	3	Chert, light- to medium-gray, calcareous, dolomitic.
140	5965	5973	8	Chert, light-gray to brownish-gray, some brownish-black (shaly) highly calcareous, dolomitic, very silty in part.
150	5973	5982	9	Chert, brownish-gray to brownish-black (shaly) a moderate to large amount of light-gray highly calcareous, dolomitic, silty in part.
160	5982	5994	12	Chert, light- to medium-gray, some brownish-gray, to brownish-black (shaly) highly calcareous, somewhat dolomitic.
170	5994	6009	15	Chert, medium- to dark-gray to brownish-black (silicified shale), highly calcareous, somewhat dolomitic.
180	6009	6016	7	Chert, medium to medium-dark gray, some brownish-black, silicified shale, highly calcareous.
190	6016	6025	9	Sandstone (very fine) to siltstone, medium dark and dark-gray to brownish-black, very shaly, dolomitic, somewhat glauconitic.
200	6025	6036	11	Chert, medium- to dark-gray, some light gray, highly calcareous at the top, dolomitic, contains some dark shaly material, slightly glauconitic.
210	6036	6042	6	Chert (silty) to siltstone, medium light to medium dark gray, dolomitic, highly calcareous at the

6042 6051 9 Chert, medium- to dark-gray (shaly) some light gray, some brownish-black, somewhat dolomitic, somewhat shaly.

6051 6062 11 Siltstone to chert (silty) medium- to dark-gray, with green spots, some grayish-black, highly glauconitic somewhat calcareous and dolomitic, shaly in part.

Top	Bottom	Thickness	
6062	6077	15	Chert, calcareous and dolomitic to silty, silicified shale, medium- to dark-gray, slightly glauconitic.

6077	6078	1	Siltstone to sandstone (fine- to medium-grained), medium- to dark-gray, calcareous, cherty, pyritic, highly glauconitic (Depth corrected from 6078 DLM to 6082 SLM)
------	------	---	---

ORISKANY SANDSTONE

6082			Sandstone, white, fine- to medium-grained, subrounded to rounded, some coarse to very coarse well-rounded grains, almost entirely quartz grains (mostly clear and glossy but many are frosted), calcareous.
------	--	--	---

6302' Total Depth.

