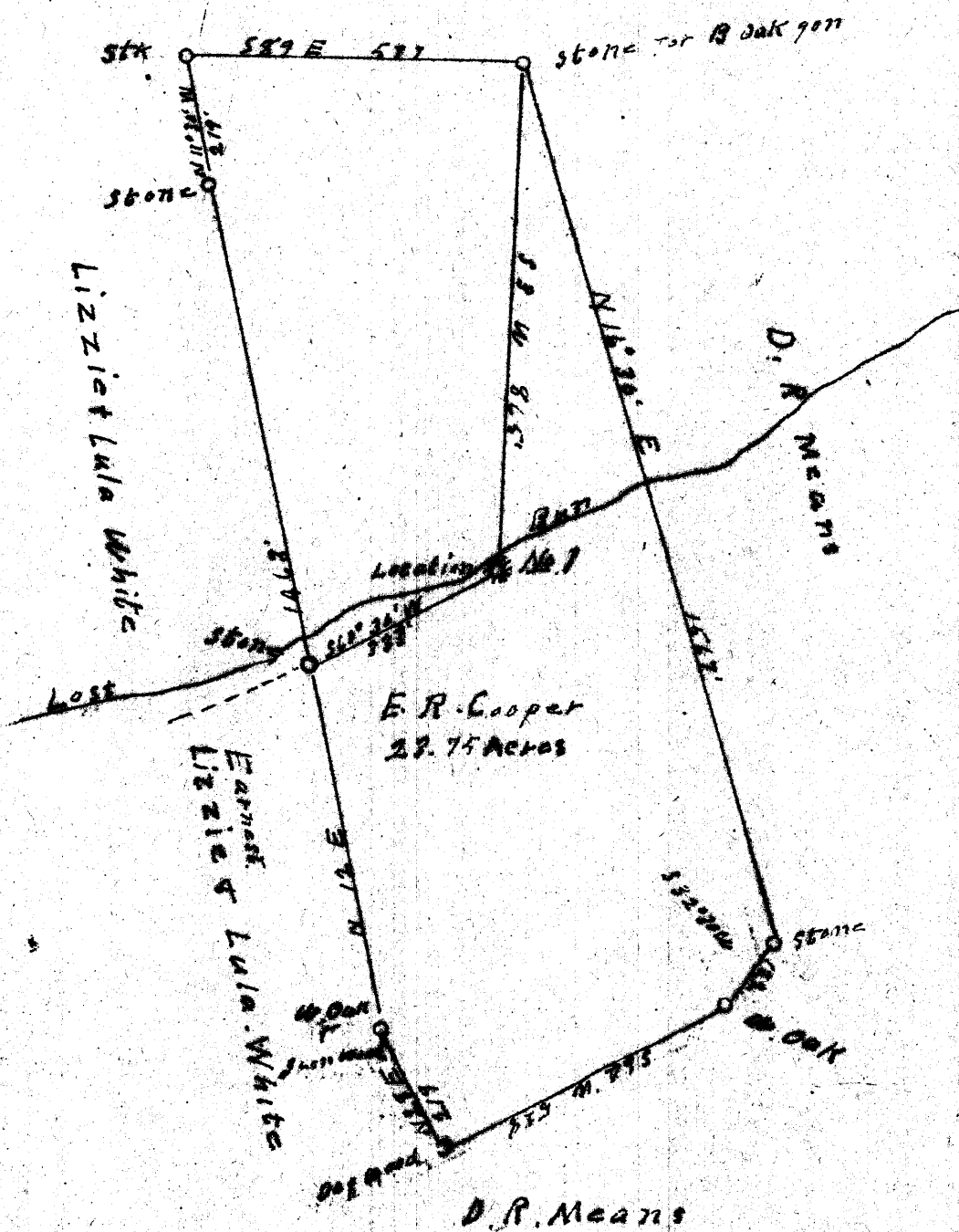


D. R. Means



New Location
 Drill Deeper
 Abandonment

2.23 S
 0.05 W

Company A. E. Ellis
 Address Tanner, W. Va.
 Farm E. R. Cooper
 Tract Acres 29.75 Lease No. _____
 Well (Farm) No. one Serial No. _____
 Elevation (Spirit Level) 824
 Quadrangle Melbrook
 County Grimes District Tray
 Engineer W. H. Moss
 Engineer's Registration No. _____
 File No. _____ Drawing No. _____
 Date 1/17/44 Scale 1" = 400'

STATE OF WEST VIRGINIA
 DEPARTMENT OF MINES
 OIL AND GAS DIVISION
 CHARLESTON

WELL LOCATION MAP
 FILE NO. GIL-539

◆ Denotes location of well on United States Topographic Maps, scale 1 to 62,500, the true and longitude lines being represented by border lines as shown.

— Denotes one inch square on border line of original bearing.

WEST VIRGINIA DEPARTMENT OF MINES
OIL & GAS DIVISION
W E L L R E C O R D

Permit No. Gil-539		Gas Well
Company	A.E. Ellis	CASING & TUBING
Address	Tanner, W.Va.	10 129 -
Farm	E.R. Cooper Acres 25	8 1/2 550 -
Location	Little Cove	6 5/8 1651 1651
Well No	1 Elev. 790	Liners No
District	Troy Gilmer County	
Surface	E.R. Cooper, Troy, W.Va.	Heater Packer
Mineral	" " "	Size-- 6 5/8
Commenced	May 27, 1942	Depth 1651
Completed	June 25, 1942	
Shot	June 25, 1942	Depth 1724-42
Flow	12/10ths W in 6 5/8"	No coal
Volume	Unknown	
Rock Pressure	500 lbs. 24 hrs.	
Oil	No	
Water	No	

Top soil	0	6
Slate	6	75
Red Rock	75	120
Sand	120	130
Slate	130	200
Red Rock	200	250
Slate	250	300
Red Rock	300	325
Slate	325	375
Red Rock	375	450
Slate	450	500
Red Rock	500	525
Slate	525	550
Sand	550	570
Slate	570	795
Big Dunkard Sand	795	845
Slate	845	940
Sand	940	965
Slate	965	975
Sand	975	1005
Slate	1005	1050
Sand	1050	1080
Lime	1080	1100
Slate	1100	1195
Sand	1195	1235
Slate & Shells	1235	1280
Sand	1280	1425
Lime	1425	1440
Sand	1440	1485
Red Rock	1485	1525
Sandy Lime	1525	1540
Red Rock	1540	1565
Maxon Sand	1565	1578
Red Rock	1578	1588
Little Lime	1588	1633
Pencil Cave	1633	1635
Big Lime	1635	1723
Big Injun Sand	1723	1780

Gas 1724-42