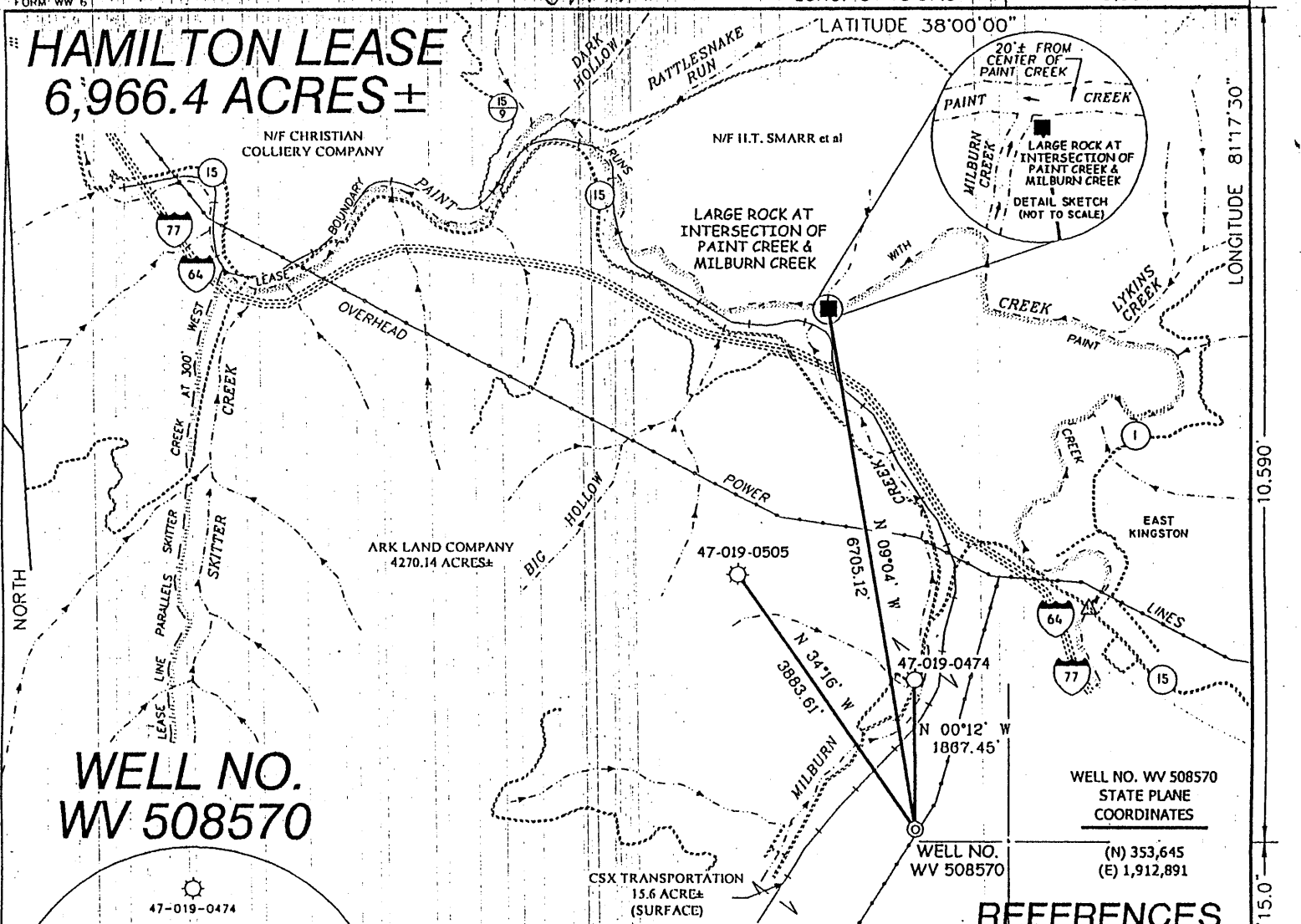
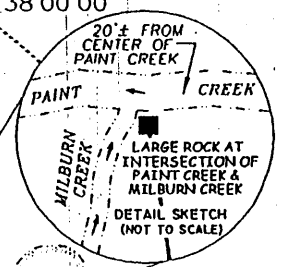


HAMILTON LEASE 6,966.4 ACRES ±

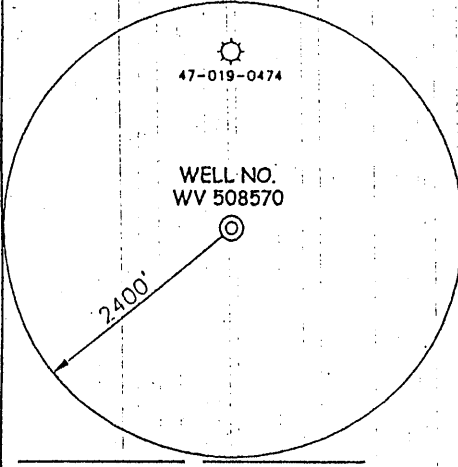
N/F CHRISTIAN
COLLIERY COMPANY

N/F H.T. SMARR et al

LARGE ROCK AT
INTERSECTION OF
PAINT CREEK &
MILBURN CREEK



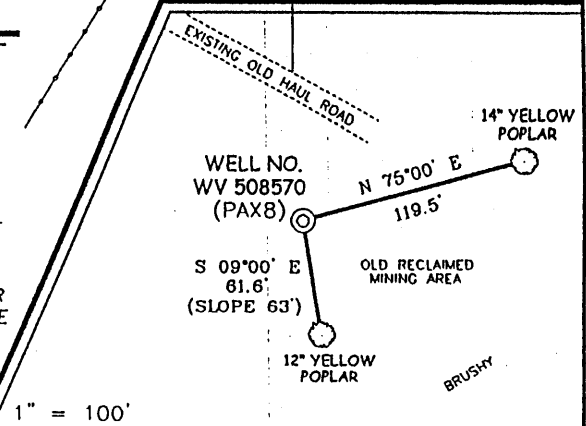
WELL NO. WV 508570



NOTES ON SURVEY

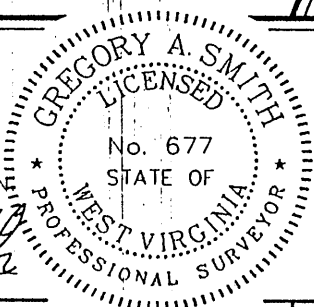
1. TIES TO WELLS AND CORNERS ARE BASED ON STATE PLANE GRID NORTH WV SOUTH ZONE MAD '27.
2. TIES TO REFERENCES ARE BASED ON MAGNETIC NORTH 5/28/02.
3. LEASE BOUNDARY SHOWN HEREON TAKEN FROM DEED BOOK 391 ON PAGE 335 IN THE COUNTY CLERK RECORDS OF FAYETTE COUNTY.
4. SURFACE OWNER AND ADJOINER INFORMATION TAKEN FROM THE ASSESSOR AND COUNTY CLERK RECORDS OF FAYETTE COUNTY IN APRIL, 2001.
5. WELL LAT./LONG. ESTABLISHED BY DGPS (SUBMETER MAPPING GRADE).

REFERENCES



I THE UNDERSIGNED, HEREBY CERTIFY THAT THIS PLAT IS CORRECT TO THE BEST OF MY KNOWLEDGE AND BELIEF AND SHOWS ALL THE INFORMATION REQUIRED BY LAW AND THE REGULATIONS ISSUED AND PRESCRIBED BY THE DIVISION OF ENVIRONMENTAL PROTECTION

P.S. 677 *Gregory A. Smith*



(+) DENOTES LOCATION OF WELL ON UNITED STATES TOPOGRAPHIC MAPS.
 DATE MAY 31, 2002
 OPERATORS WELL NO. WV 508570
 API WELL NO. 47-19-00957PP
 STATE COUNTY PERMIT

MINIMUM DEGREE OF ACCURACY 1 / 2500 FILE NO. 4724P508570 (121-74)
 PROVEN SOURCE OF ELEVATION JUNCTION OF ROADS ELEVATION 1,426' SCALE 1" = 2000'

STATE OF WEST VIRGINIA
 DIVISION OF ENVIRONMENTAL PROTECTION
 OFFICE OF OIL AND GAS

WELL TYPE : OIL GAS LIQUID INJECTION WASTE DISPOSAL IF "GAS" PRODUCTION STORAGE DEEP SHALLOW

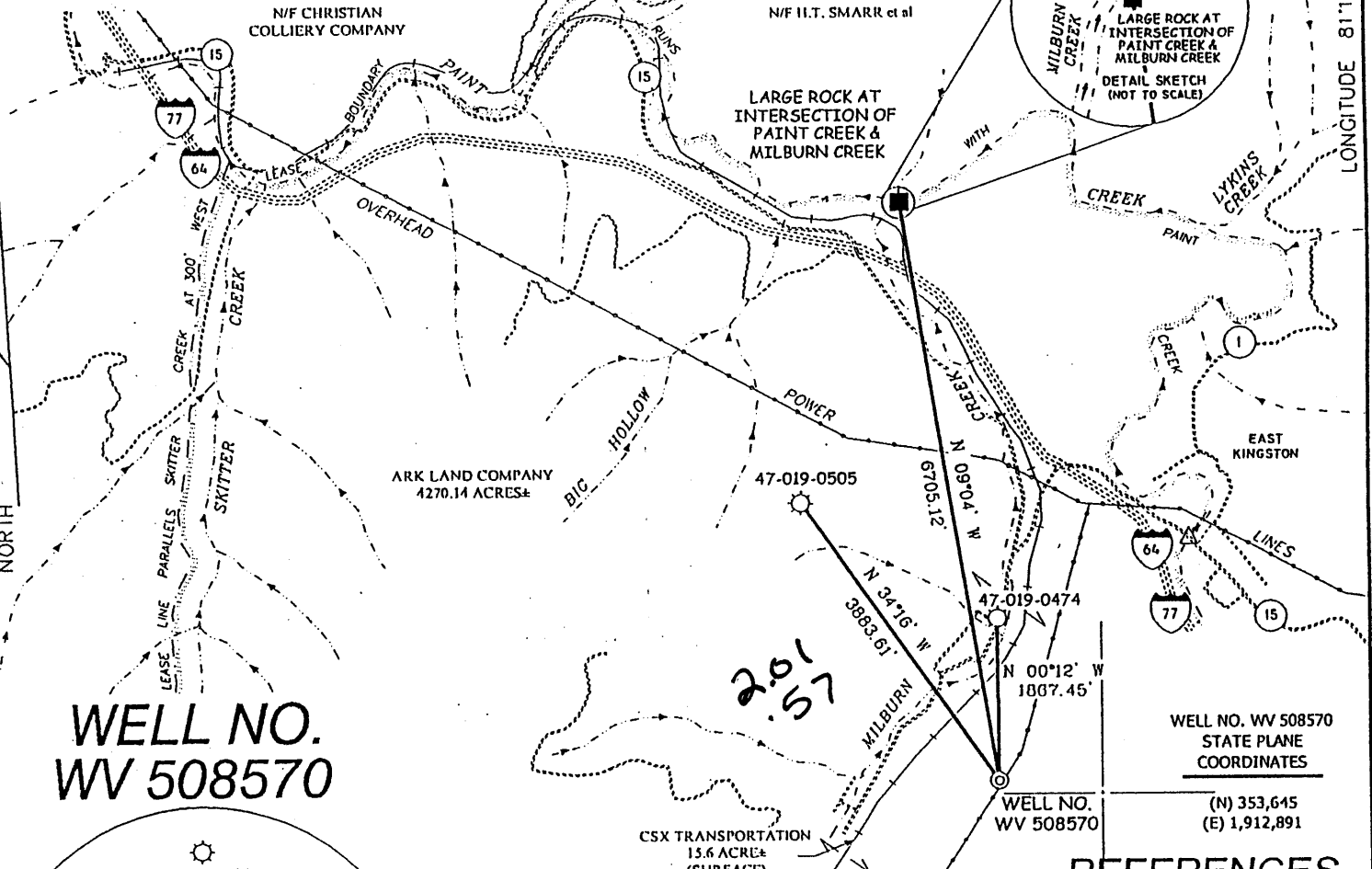
LOCATION : ELEVATION 1,824' WATERSHED MILBURN CREEK
 DISTRICT VALLEY COUNTY FAYETTE QUADRANGLE PAX 7.5'

SURFACE OWNER ARK LAND COMPANY ACREAGE 4270.14
 ROYALTY OWNER ARK LAND COMPANY & NEW RIVER ESTATES, L.L.C. LEASE ACREAGE 6966.4
 PROPOSED WORK : LEASE NO. 62824
 DRILL CONVERT DRILL DEEPER REDRILL FRACTURE OR STIMULATE PLUG OFF OLD FORMATION PERFORATE NEW FORMATION PLUG AND ABANDON CLEAN OUT AND REPLUG OTHER
 PHYSICAL CHANGE IN WELL (SPECIFY) _____ TARGET FORMATION DEVONIAN SHALE
 ESTIMATED DEPTH 6,560'

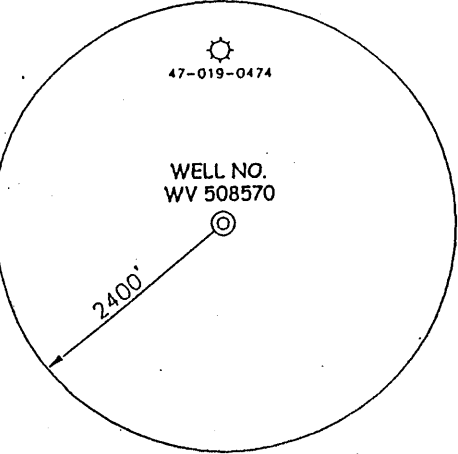
WELL OPERATOR EQUITABLE PRODUCTION COMPANY DESIGNATED AGENT STEPHEN G. PERDUE
 ADDRESS P.O. BOX 2347, CHARLESTON, WV 25328 ADDRESS P.O. BOX 2347, CHARLESTON, WV 25328

COUNTY NAME FAY
 PERMIT 0957PP

HAMILTON LEASE 6,966.4 ACRES ±



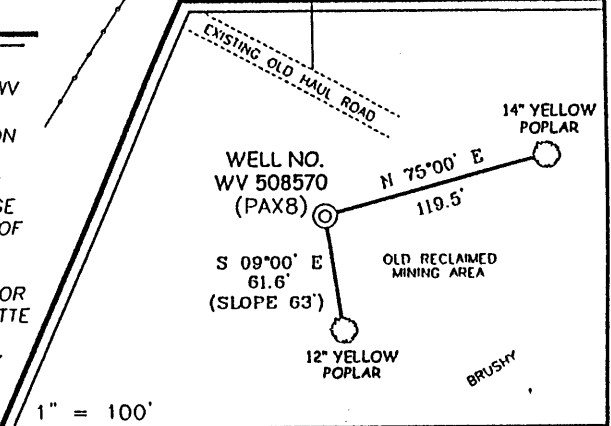
WELL NO. WV 508570



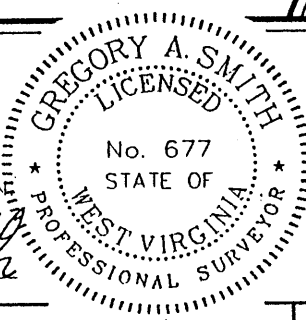
NOTES ON SURVEY

1. TIES TO WELLS AND CORNERS ARE BASED ON STATE PLANE GRID NORTH WV SOUTH ZONE NAD '27.
2. TIES TO REFERENCES ARE BASED ON MAGNETIC NORTH 5/28/02.
3. LEASE BOUNDARY SHOWN HEREON TAKEN FROM DEED BOOK 391 ON PAGE 335 IN THE COUNTY CLERK RECORDS OF FAYETTE COUNTY.
4. SURFACE OWNER AND ADJOINER INFORMATION TAKEN FROM THE ASSESSOR AND COUNTY CLERK RECORDS OF FAYETTE COUNTY IN APRIL, 2001.
5. WELL LAT./LONG. ESTABLISHED BY DGPS(SUBMETER MAPPING GRADE).

REFERENCES



I THE UNDERSIGNED, HEREBY CERTIFY THAT THIS PLAT IS CORRECT TO THE BEST OF MY KNOWLEDGE AND BELIEF AND SHOWS ALL THE INFORMATION REQUIRED BY LAW AND THE REGULATIONS ISSUED AND PRESCRIBED BY THE DIVISION OF ENVIRONMENTAL PROTECTION



P.S. 677 *Gregory A. Smith*

(+) DENOTES LOCATION OF WELL ON UNITED STATES TOPOGRAPHIC MAPS.
 DATE MAY 31, 2002
 OPERATORS WELL NO. WV 508570
 API WELL NO. 47-19-00957
 STATE COUNTY PERMIT

MINIMUM DEGREE OF ACCURACY 1 / 2500 FILE NO. 4724P508570 (121-74)
 PROVEN SOURCE OF ELEVATION JUNCTION OF ROADS ELEVATION 1,426' SCALE 1" = 2000'

STATE OF WEST VIRGINIA
 DIVISION OF ENVIRONMENTAL PROTECTION
 OFFICE OF OIL AND GAS

WELL TYPE : OIL GAS LIQUID WASTE IF "GAS" PRODUCTION STORAGE DEEP SHALLOW

LOCATION : ELEVATION 1,824' WATERSHED MILBURN CREEK
 DISTRICT VALLEY COUNTY FAYETTE QUADRANGLE PAX 7.5'

SURFACE OWNER ARK LAND COMPANY ACREAGE 4270.14
 ROYALTY OWNER ARK LAND COMPANY & NEW RIVER ESTATES, L.L.C. LEASE ACREAGE 6966.4
 PROPOSED WORK : LEASE NO. 62824

DRILL CONVERT DRILL DEEPER REDRILL FRACTURE OR STIMULATE PLUG OFF OLD FORMATION PERFORATE NEW FORMATION PLUG AND ABANDON CLEAN OUT AND REPLUG OTHER

PHYSICAL CHANGE IN WELL (SPECIFY) _____ TARGET FORMATION DEVONIAN SHALE
 ESTIMATED DEPTH 6,560'

WELL OPERATOR EQUITABLE PRODUCTION COMPANY DESIGNATED AGENT STEPHEN G. PERDUE
 ADDRESS P.O. BOX 2347, CHARLESTON, WV 25328 ADDRESS P.O. BOX 2347, CHARLESTON, WV 25328

COUNTY NAME FAY PERMIT 0957

Handwritten initials

State of West Virginia
Division of Environmental Protection
Section of Oil and Gas

Well Operator's Report of Well Work

Farm Name: Ark Land Co. Operator Well No.: 508570

LOCATION: Elevation: 1824' Quadrangle: Pax
District: Valley County: Fayette

Latitude: 10590 Feet South of 38 Deg. 0 0
Longitude: 3030 Feet West of 81 Deg. 17 30

Company: Equitable Production Company
P.O. Box 2347, 1710 Pennsylvania Avenue
Charleston, WV 25328

Agent: Stephen G. Perdue

Inspector: Richard Campbell

Permit issued: 6/26/2002

Well work commenced: 07/24/02

Well work completed: 11/06/02

Verbal Plugging

Permission granted on:

Rotary Rig X Cable Rig _____

Total Depth 3429 feet

Fresh water depths (ft) 30'

Salt water depths (ft) 877', 1150' & 2013'

Is coal being mined in area?

Coal Depths (ft): 119'-125'

Casing & Tubing Size	Used in Drilling	Left in Well	Cement Fill Up Cu. Ft.
13 3/8"	30'	30'	grouted
9 5/8"	566'	566'	222.4 ft³
7"	1734'	1734'	322.7 ft³
4 1/2"	3411'	3411'	283.5 ft³

OPEN FLOW DATA

Producing formation Gordon / Berea; Lower Weir; Big Lime; Lower Maxton; Maxton Stray Pay Zone Depth (ft): _____

Gas: Initial open flow 0 MCF/d Oil: Initial open flow _____ Bbl/d

Final open flow: _____ MCF/d Final open flow: _____

Time of open flow between initial and final tests _____ Hours

Static rock pressure 285 psig (surface pressure) after _____ Hours

Second producing formation _____ Pay Zone Depth (ft): _____

Gas: Initial open flow _____ MCF/d Oil: Initial open flow _____ Bbl/d

Final open flow: _____ MCF/d Final open flow: _____

Time of open flow between initial and final tests _____ Hours

Static rock pressure _____ psig (surface pressure) after _____ Hours

See Attach for details

NOTE: ON BACK OF THIS FORM PUT THE FOLLOWING: 1) DETAILS OF PERFORATED INTERVALS, FRACTURING OR STIMULATING, PHYSICAL CHANGE, ETC. 2) THE WELL LOG WHICH IS A SYSTEMATIC DETAILED GEOLOGICAL RECORD OF ALL FORMATIONS, INCLUDING COAL ENCOUNTERED BY THE WELLBORE.

Kathy L. Journey
For: Equitable Production Company

By: *Paul A. Davis*
Date: 1/17/03

FEB 27 2003

FAY 0957

**EQUITABLE PRODUCTION COMPANY
WR-35 COMPLETION REPORT - Attachment
Well Treatment Summary**

Well: WV-508570-KVB

API# 47-019-00957

Date	08/14/02	08/14/02	08/21/02	08/23/02	08/30/02
Type Frac Acid, N ₂ , Foam, Water	N ₂	Variable Q Foam	Foamed Acid	Variable Q Foam	Variable Q Foam
Zone Treated	Gordon Berea	Lower Weir	Big Lime	Lower Maxton	Maxton Stray
# Perfs From - To:	40 3106' - 3321'	20 2822'-2841'	18 2316' - 2350'	30 2069' - 2143'	21 1995' - 2015'
BD Pressure @ psi	2540	1030	1600	1040	980
ATP psi	2044	1161	1715	2395	2370
Avg. Rate, B=B/M, S= SCF/M	50,589 S	16 B (foam)	12 B (foam)	40 B (foam)	24 B (foam)
Max. Treat Press psi	2100	1240	2120	2510	2550
ISIP psi	1450	230	1280	865	830
Frac Gradient	.51	.51	.55	.84	.85
10 min S-I Pressure	1220	950	1310	870	1560
Material Volume					
Sand-sks		360		648	389
Water-bbl		192		355	155
SCF N ₂	799,731	404,040	145,857	794,608	428,923
Acid-gal	500 gal 15%	420 gal 15%	3000 gal 15%	1750 gal 15%	500 gal 15%
NOTES:					

TOP	BOTTOM	FORMATION	REMARKS
		Coal	119'-125' Water @ 30', 1150' & 2013'
		MIDDLE	GT @ 1793' = NS
1794'	1856'	MAXTON:	
		LOWER	GT @ 1915' = NS
		MAXTON	
1961'	2021'	STRAY:	
		LOWER	GT @ 2161' = NS
2060'	2151'	MAXTON:	
2154'	2227'	LITTLE LIME:	GT @ 2346' = NS
2255'	2582'	BIG LIME:	GT @ 2532' = NS
2638'	2664'	BIG INJUN:	
2697'	2728'	UPPER WEIR:	GT @ 2717' = NS
2784'	2842'	LOWER WEIR:	GT @ 2930' = NS
3079'	3102'	SUNBURY:	
3102'	3135'	BEREA:	GT @ 3117' = odor
3304'	3330'	GORDON:	GT @ 3305' = NS
	3430'	DRILLER TD:	GT @ TD = NS