

WW-7
8-30-06



West Virginia Department of Environmental Protection
Office of Oil and Gas

WELL LOCATION FORM: GPS

API: 47-019-00701 WELL NO.: 12956
 FARM NAME: Elkem Metals Co.
 RESPONSIBLE PARTY NAME: Diversified Production LLC
 COUNTY: Fayette DISTRICT: Valley
 QUADRANGLE: Montgomery
 SURFACE OWNER: WV Environmental Inc
 ROYALTY OWNER: Elkem Metals Co.
 UTM GPS NORTHING: 4,221,503.87
 UTM GPS EASTING: 477,238.25 GPS ELEVATION: 1000'

The Responsible Party named above has chosen to submit GPS coordinates in lieu of preparing a new well location plat for a plugging permit or assigned API number on the above well. The Office of Oil and Gas will not accept GPS coordinates that do not meet the following requirements:

1. Datum: NAD 1983, Zone: 17 North, Coordinate Units: meters, Altitude: height above mean sea level (MSL) – meters.
2. Accuracy to Datum – 3.05 meters
3. Data Collection Method:

Survey grade GPS : Post Processed Differential

Real-Time Differential

Mapping Grade GPS : Post Processed Differential

Real-Time Differential

4. Letter size copy of the topography map showing the well location.

I the undersigned, hereby certify this data is correct to the best of my knowledge and belief and shows all the information required by law and the regulations issued and prescribed by the Office of Oil and Gas.

 Director Production 03/19/2021
 Signature Title Date

RECEIVED
Office of Oil and Gas

MAY 13 2021

WV Department of
Environmental Protection
05/28/2021



Diversified Gas & Oil Corporation
 100 Diversified Way
 Pikeville KY, 41051

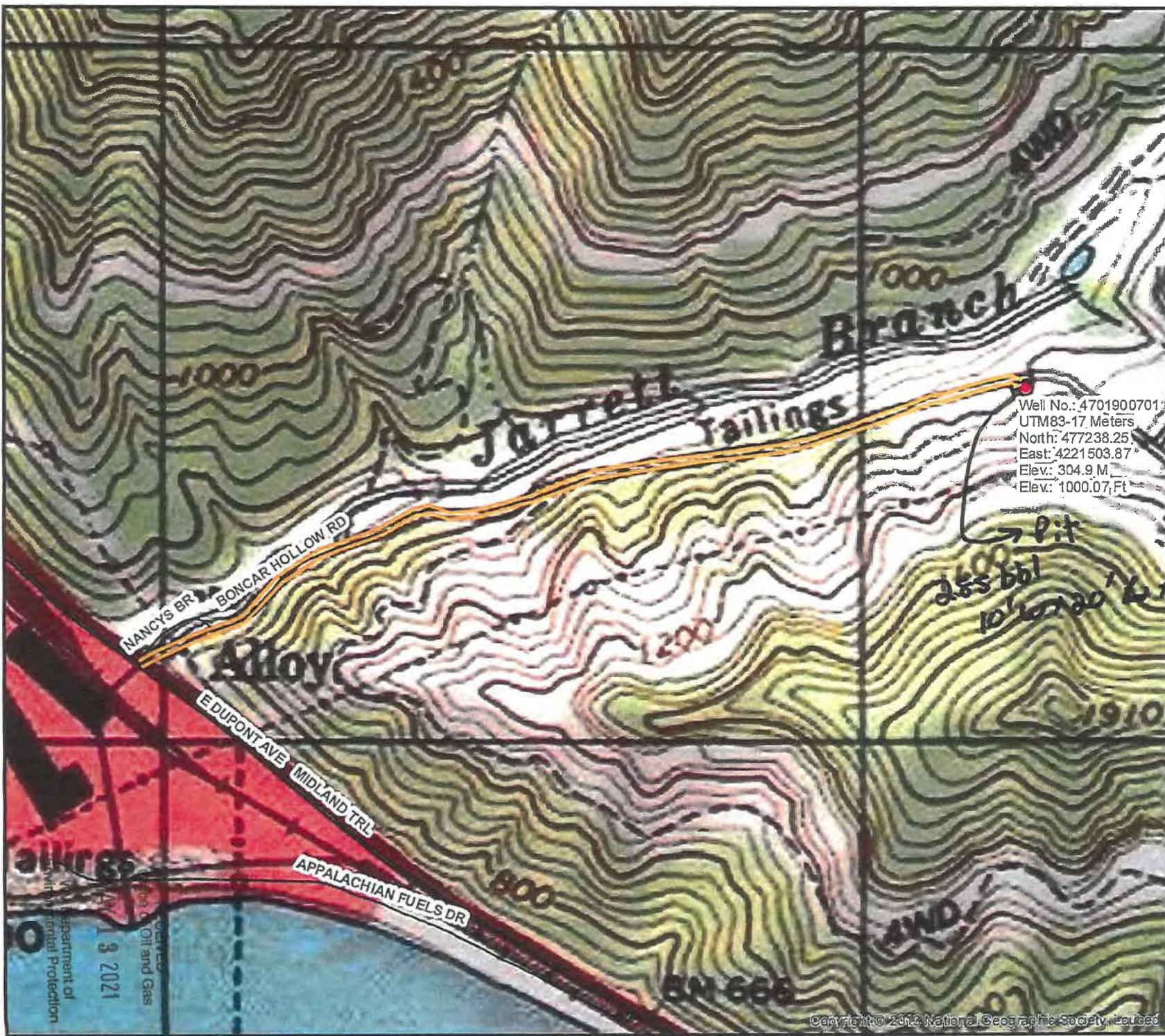
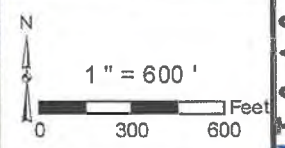
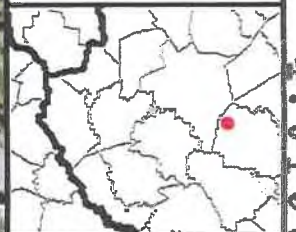
47-019-00701

Plugging Map

Legend

- Well
- Access Road
- Pits
- Pad
- Public Roads

Handwritten notes:
 Pit
 255 bbl
 10' to 20' dia
 8' Deep



Department of Environmental Protection
 Division of Oil and Gas
 1/3/2021

Copyright © 2012 National Geographic Society, Inc.

4701900701P