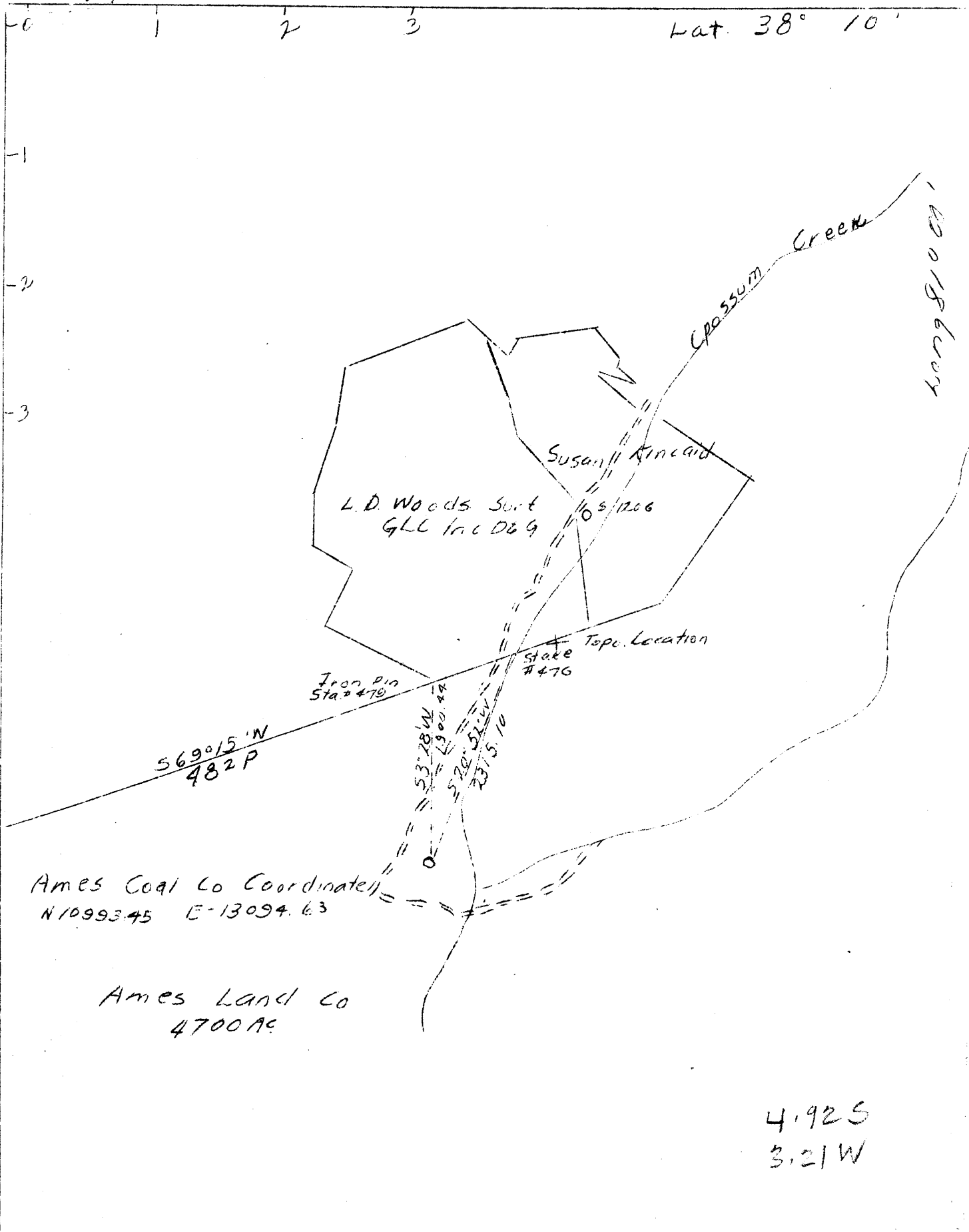


mm

Lat. 38° 10'



REVISED LOCATION

COMPANY GODFREY L. CABOT, INC.
 ADDRESS 900 UNION BLDG., CHAS., W. VA.
 FARM AMES LAND CO.
 TRACT ACRES 4700 LEASE NO. 4-529
 WELL (FARM) NO. 1 SERIAL NO. 1221
 ELEVATION (S.L.) 1641.89
 QUADRANGLE FAYETTEVILLE FC
 COUNTY FAYETTE DISTRICT MT. COVE
 ENGINEER ROY BOOTON
 ENGINEER'S REG. NO. _____
 FILE NO. _____ DRAWING NO. _____
 DATE 10/29/46 SCALE 1"-1320'

STATE OF WEST VIRGINIA
 DEPARTMENT OF MINES
 OIL AND GAS DIVISION
 CHARLESTON
 WELL LOCATION MAP
 FILE NO. FAY - 61 R

+ DENOTES LOCATION OF WELL ON U.S. TOPOGRAPHIC MAPS, SCALE 1 TO 62,500 LATITUDE AND LONGITUDE LINES BEING REPRESENTED BY BORDER LINES AS SHOWN.
 - DENOTES ONE INCH SPACES ON BORDER LINE OF ORIGINAL TRACING.

5-0 2 (362)

WEST VIRGINIA DEPARTMENT OF MINES
OIL & GAS DIVISION
W E L L R E C O R D

Permit No. ^{Fay} 61 R
Fayetteville Quad.

Dry Hole
CASING & TUBING

Company	Godfrey L. Cabot, Inc.	13	32
Address	Charleston, W.Va.	10	450
Farm	Ames Land Company Acres	8	1916
Location			
Well No.	1 serial 1221		
District	Mountain Cove		Elev. 1642
Commenced	Nov. 21, 1946		Hayette County
Completed	Feb. 8, 1947		
Surface			
Mineral			
Water	80 H.F.		

Soil	0	5	
Sand Y	5	15	
Shale Bl	15	21	
Sand	21	65	
Slate & Shells	65	75	
Sand	75	176	
Slate & Shells	176	362	
Sand	362	390	
Slate Bk	390	412	
Coal	412	415	
Slate Wh	415	448	
Lime	448	470	
Slate & Shells	470	505	SLM 450
Sand	505	550	
Slate & Shells	550	602	
Sand	602	646	
Slate & Shells	646	716	
Sand	716	844	
Slate & Shells	844	920	
Sand	920	1012	
Slate & Shells	1012	1160	
Shale Br	1160	1204	
Salt Sand	1204	1280	SLM 1223
Red Rock	1280	1319	
Lime	1319	1340	
Red Rock	1340	1425	
Slate & Shells	1425	1455	
Red Rock	1455	1489	
Lime Red	1489	1605	
Slate	1605	1635	
Red Rock	1635	1642	
Slate & Shells	1642	1661	
Red Rock	1661	1690	
Red Lime	1690	1702	
Slate & Shells	1702	1823	
Little Lime	1823	1841	
Pencil Cave	1841	1886	
Lime	1886	1910	
Big Lime	1910	2098	SLM 1916
Red Lime	2098	2102	
Lime	2102	2120	
Slate Lime	2120	2150	
Lime Base Big Lime	2150	2179	SLM 2156
Injun Sand Red	2179	2223	
Sand Wh	2223	2240	
Slate & Shells	2240	2269	
Sand Broken	2269	2280	
Sand Wh	2280	2315	
Slate & Shells	2315	2648	
Sand Berea	2648	2652	
Slate & Shells	2652	2706	

Gas 1223 2/10 W 3/8" -- 2 M
Gas 2153-59; 6/10 W 1" 26 M