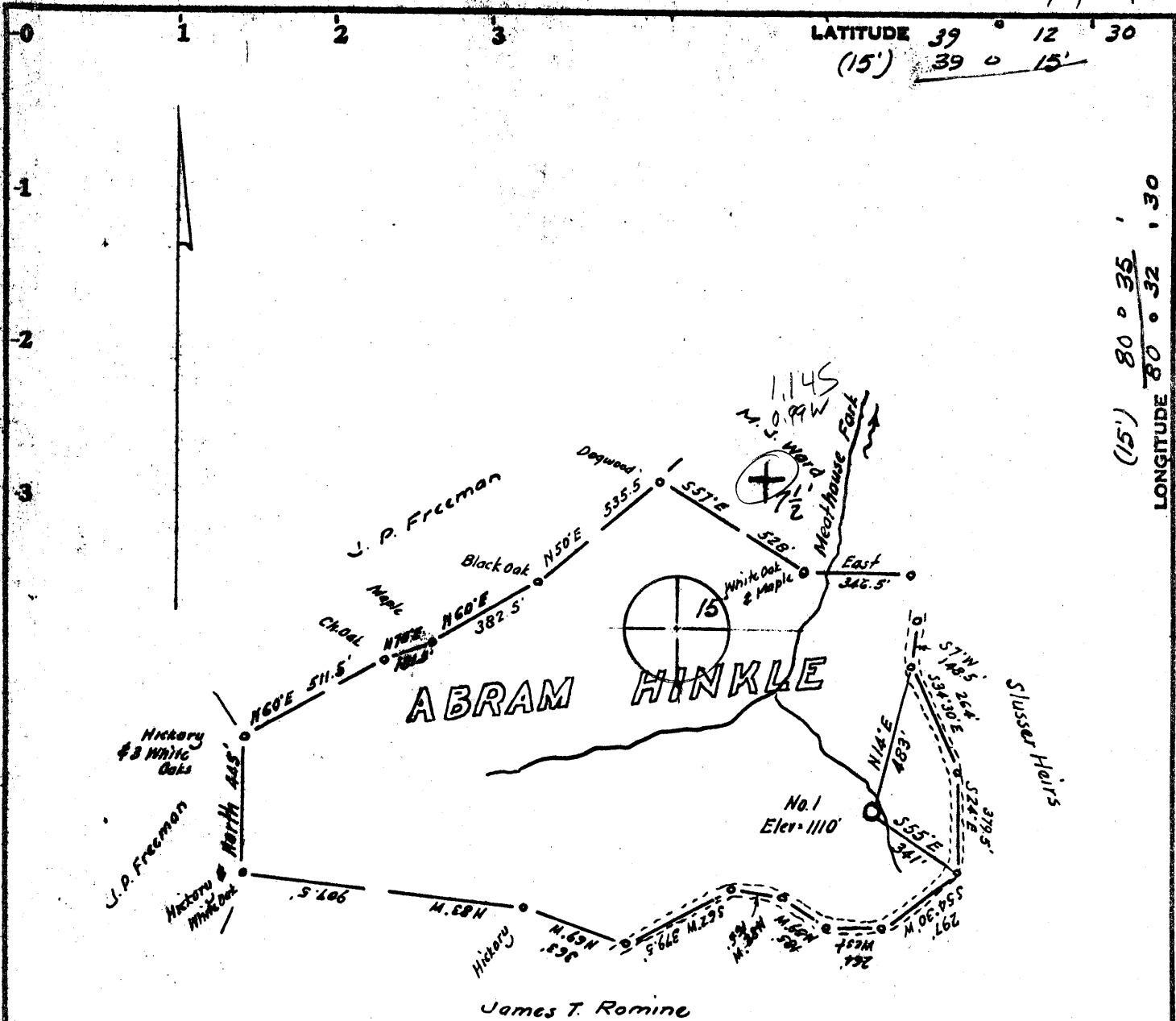


10/11/77 *R*



LATITUDE 39° 12' 30"
(15') 39° 0' 15"

LONGITUDE 80° 32' 30"
(15') 80° 0' 35"

Minimum Error of Closure 1 in 200'

Source of Elevation U.S.G.S. B.M. at Big Isac. 985'

- Fracture.....
- New Location.....
- Drill Deeper.....
- Abandonment..... 10/11/77

I, the undersigned, hereby certify that this map is correct to the best of my knowledge and belief and shows all the information required by paragraph 6 of the rules and regulations of the oil and gas section of the mining laws of West Virginia.

Signed: *M. Abbe*
Squares: N S E W

Company Hugh Spencer
 Address West Union, West Va.
 Farm Abram Hinkle
 Tract _____ Acres 62 Lease No. _____
 Well (Farm) No. One Serial No. _____
 Elevation (Spirit Level) 1110
 Quadrangle Big Isac. 7 1/2 Quad 15' NC
 County Doddridge District Greenbrier
 Engineer *M. Abbe*
 Engineer's Registration No. 1227
 File No. _____ Drawing No. _____
 Date Dec. 13, 1976 Scale 1" = 500'

STATE OF WEST VIRGINIA
 DEPARTMENT OF MINES
 OIL AND GAS DIVISION
 CHARLESTON

WELL LOCATION MAP

FILE NO. DOD-1282-A

+ Denotes location of well on United States Topographic Maps, scale 1 to 62,500, latitude and longitude lines being represented by border lines as shown.

— Denotes one inch spaces on border line of original tracing.

OCT 21 1977

47-017

(145)