

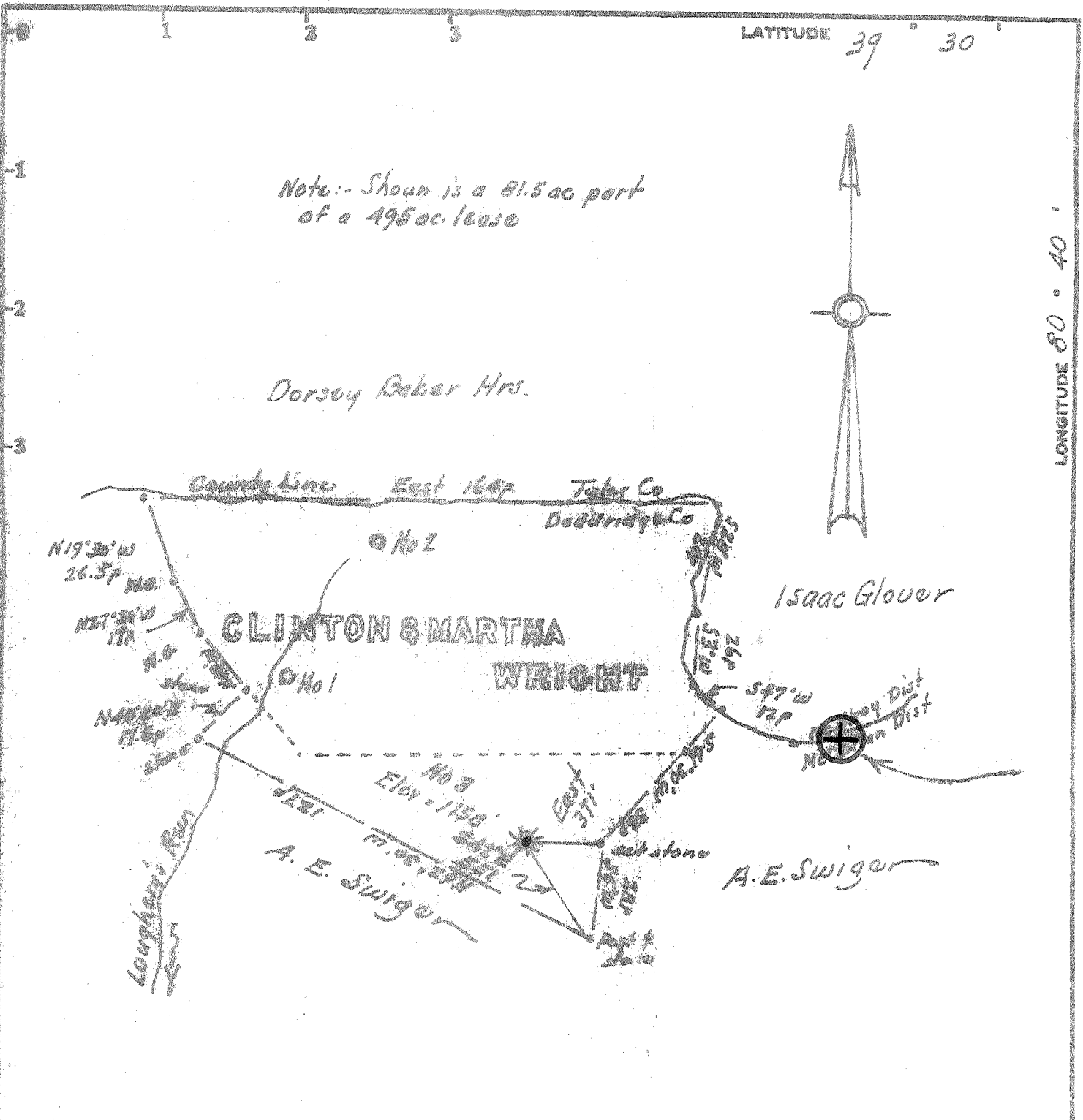


LATITUDE *39° 30'*

LONGITUDE *80° 40'*

Note: - Shown is a 81.5 ac part of a 495 ac. lease

Dorsey Reber Mrs.



Minimum Error of Closure *1 in 200'*

Source of Elevation *Elev. Well No. 1 = 985'*

I, the undersigned, hereby certify that this map is correct to the best of my knowledge and belief, and that the same complies with the requirements required by paragraph 6 of the rules and regulations of the oil and gas section of the mining laws of West Virginia.

- Fracture
- New Location
- Drill Deepen
- Abandonment

Signature: *W. H. ...*  
Squares: N S E W

Company *Walter Pipe & Supply Co*  
 Address *Salmon, W. Va.*  
 Firm *Clinton & Martha Wright*  
 Tract *Acres 495* Lease No. \_\_\_\_\_  
 Well (Farm) No. *Three* Serial No. \_\_\_\_\_  
 Elevation (Spot Level) *1153*  
 Quadrangle *Carterspoint NW*  
 County *Doddridge* District *McClanahan*  
 Engineer *W. H. ...*  
 Engineer's Registration No. *1227*  
 File No. \_\_\_\_\_ Drawing No. \_\_\_\_\_  
 Date *August 20, 1936* Scale *1" = 400' = 660'*

STATE OF WEST VIRGINIA  
DEPARTMENT OF MINES  
OIL AND GAS DIVISION  
CHARLESTON

WELL LOCATION MAP

FILE NO. *DDO-1260-A*

+ Denotes location of well on United States Topographic Maps, scale 1 to 62,500, latitude and longitude lines being represented by border lines as shown.

- Denotes one inch spaces on border line of original tracing.

*47 017*