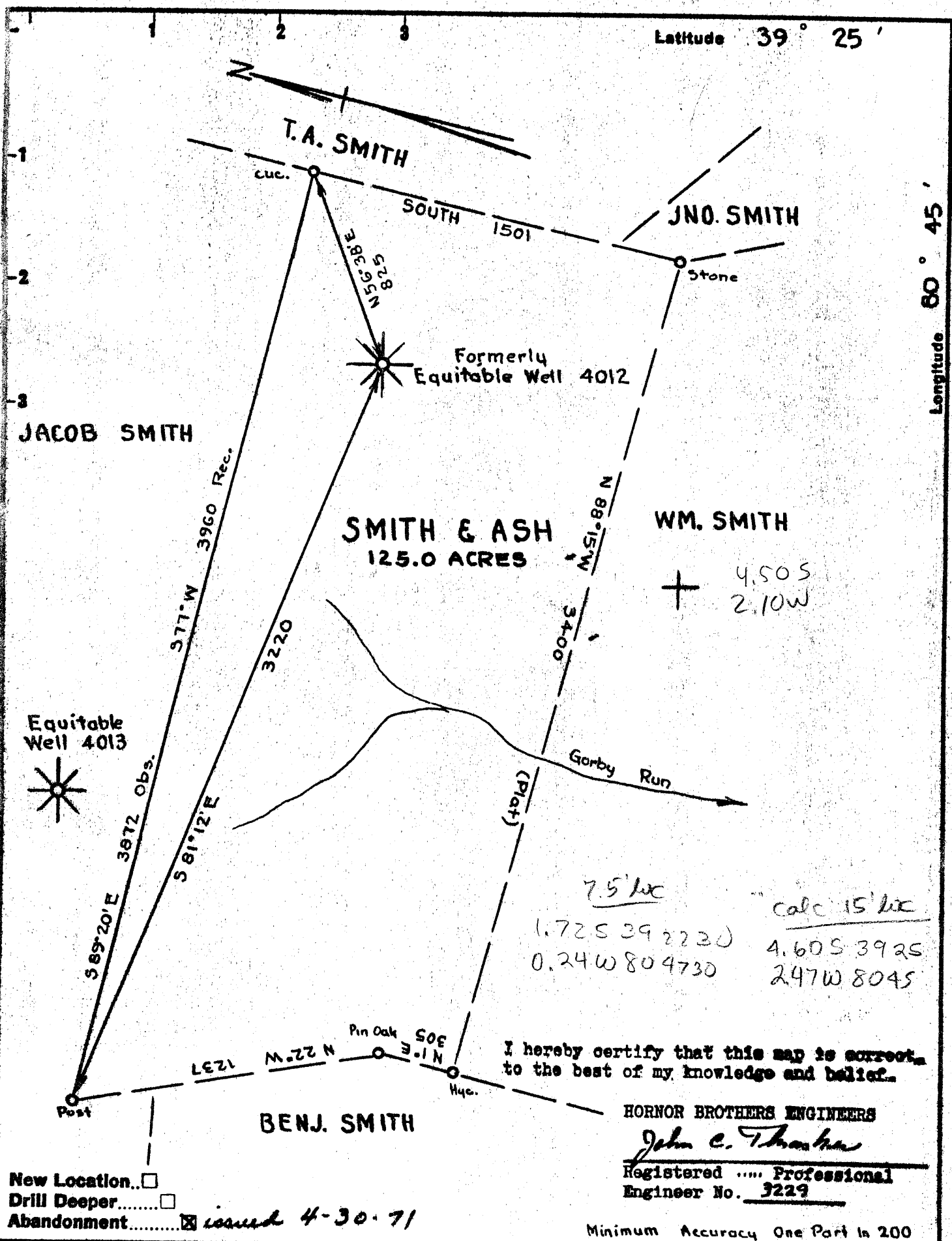


Latitude 39° 25'

Longitude 80° 45'



I hereby certify that this map is correct to the best of my knowledge and belief.

HONOR BROTHERS ENGINEERS
John C. Thacker
 Registered Professional Engineer No. 3229

Minimum Accuracy One Part in 200

New Location...
 Drill Deeper...
 Abandonment... issued 4-30-71

Company	MONONGAHELA POWER CO.
Address	FAIRMONT, W.VA.
Farm	SMITH & ASH
Tract	Acres 125.0 Lease No. Equitable Gas
Well (Farm) No.	ONE Serial No. N-4012 Equitable Gas
Elevation (Spirit Level)	1119
Quadrangle	WEST UNION SE 21
County	DODDRIDGE District WEST UNION
Engineer	<i>John C. Thacker</i>
Engineer's Registration No.	3229
File No.	Drawing No.
Date	8-25-71 Scale 1" = 500'

STATE OF WEST VIRGINIA
 DEPARTMENT OF MINES
 OIL AND GAS DIVISION
 CHARLESTON

WELL LOCATION MAP
 FILE NO. Dodd-1237 (A)
 (was 017 71581)

+ Denotes location of well on United States Topographic Maps, scale 1 to 62,500, latitude and longitude lines being represented by border lines as shown.

- Denotes one inch spaces on border line of original tracing.

FIRST PRESSURE TEST IN 6 5/8 CASING

			REMARKS
30 Sec.	50	lbs.	
1 Min.	75	"	
2 "	110	"	
5 "	200	"	
10 "	300	"	
15 "	360	"	
30 "	430	"	
Rock Pressure	455	" in 10 hrs.	
Taken	Mar 6	1912	
By	Gaskins		

WELL TUBED AND PACKED Mar 13 1912

VIZ: Used 2070 ft. 3" Tubing
1-6 5/8 x 3" Spring Anchor Packer
3 ft. 63 ft. of Anchor
Packer used

FIRST PRESSURE TEST IN 3" TUBING

			REMARKS
30 Sec.	110	lbs.	Aug 18-1919
1 Min.	175	"	Used 106 ft. 2180 ft. 3" Tubing
2 "	290	"	1-6 5/8 x 3" Anchor Packer
5 "	425	"	7 ft. 110 ft. of Anchor
10 "	460	"	
15 "	470	"	
30 "	480	"	
Rock Pressure	485	" in 18 hrs.	
Taken	Mar 14	1914	
By	Gaskins		

MATERIAL FOR THIS WELL RECEIVED FROM FOLLOWING SOURCES:

Blank lined area for recording material sources.

FORMATIONS
FORM: 032-5170

Well # 4012 Smith & Ash.

NAME	TOP	BOTTOM	OIL	GAS	WATER	REMARKS
Clay		14				
Slate	14	44				
Red Rock	44	94				
Slate	94	138				
Red Rock	138	208				
Slate	208	250				
Native Coal	250	253				
Slate	252	304				
Red Rock	304	364				
Shale	364	384				
Water Shells	384	650				
Sand	650	670				
Slate	670	690				
Sand	690	715				
Slate	715	745				
Red Rock	745	795				
Sand	795	810				
Slate	810	860				
Red Rock	860	870				
Shale	870	900				
Red Rock	900	990				
Slate	990	1010				
Sand	1010	1035				
Slate	1035	1080				
Shale	1080	1140				
Slate	1140	1208				
Big Cumberland Sand	1208	1240				
Salt Sand	1240	1655				
Slate	1655	1710				
Sand	1710	1800				
Slate	1800	1905				
Red Rock	1905	1950				
Shale	1950	1960				
Slate	1960	1970				
Big Shale	1970	2040				
Big Cumberland	2040	2070				
Meat Depth	2070			2048		