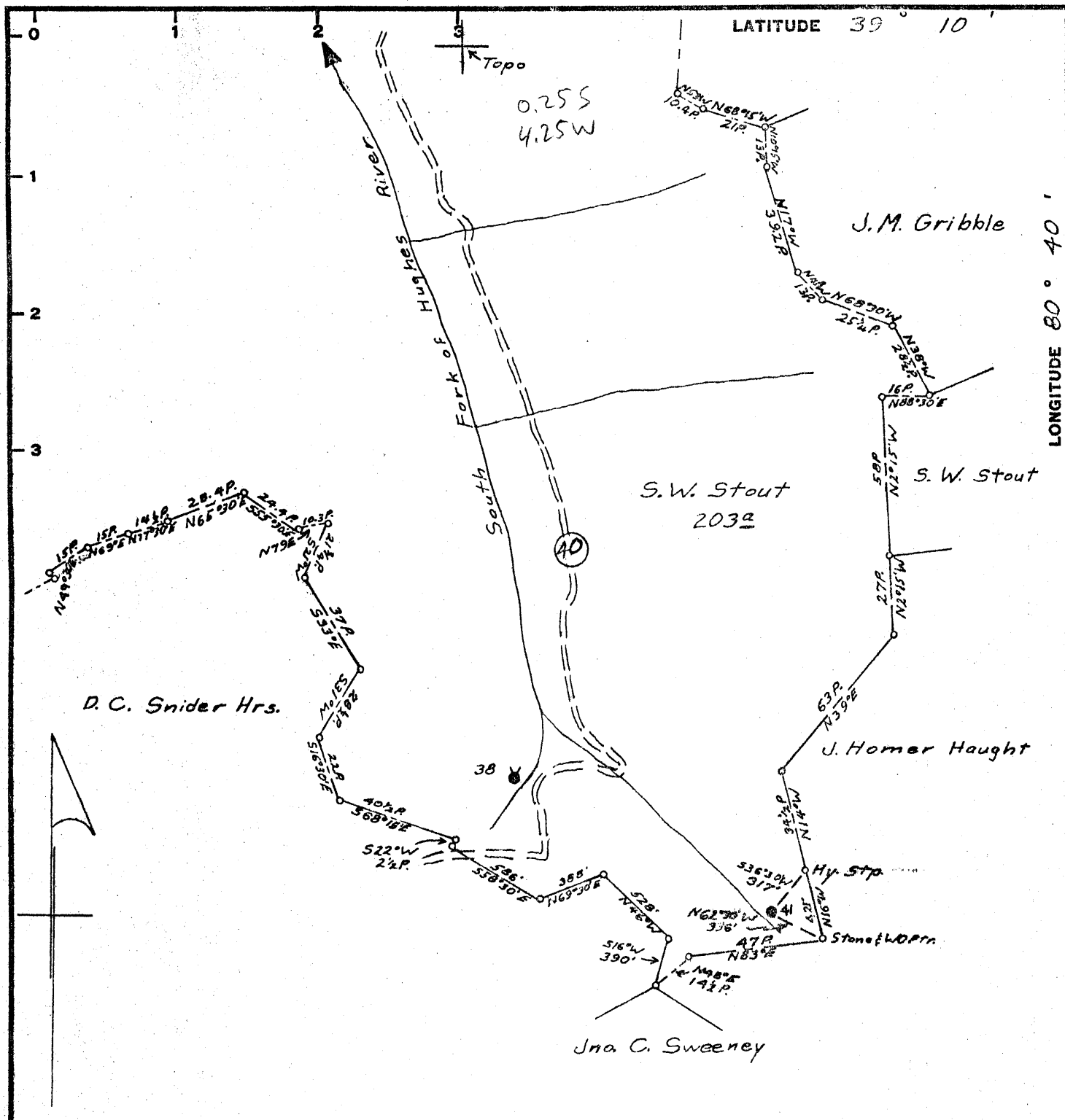


4/25/69



Minimum Error of Closure 1' in 200'

Source of Elevation S. W. Stout #38 Abd., Elev. 1052.53 Gr.

Partial Plot  revised  
 Fracture   
 New Location   
 Drill Deeper   
 Abandonment  revised 5-29-69

I, the undersigned, hereby certify that this map is correct to the best of my knowledge and belief and shows all the information required by paragraph 6 of the rules and regulations of the oil and gas section of the mining laws of West Virginia.

Signed: A. C. Gilbert

Map No. 7

Squares: N S 20 E W 8

Company PENNZOIL UNITED, INC.  
 Address P. O. BOX 1588, PARKERSBURG, W. VA.  
 Farm S. W. Stout  
 of of  
 Tract 203 Acres 1427 Lease No. 80793  
 Well (Farm) No. 41 Serial No. \_\_\_\_\_  
 Elevation (Spirit Level) 1102.61 F1.  
 Quadrangle Vadis WC  
 County Doddridge District Southwest  
 Engineer A. C. Gilbert  
 Engineer's Registration No. 2534  
 File No. 913 Drawing No. \_\_\_\_\_  
 Date April 23, 1969 Scale 1" = 800'

STATE OF WEST VIRGINIA  
 DEPARTMENT OF MINES  
 OIL AND GAS DIVISION  
 CHARLESTON

WELL LOCATION MAP

FILE NO. Dod-1214-P (A)

+ Denotes location of well on United States Topographic Maps, scale 1 to 62,500, latitude and longitude lines being represented by border lines as shown.

- Denotes one inch spaces on border line of original tracing.